

SECTION 9 BRUSH GUARDS, ROLL BARS AND PADDING

SECTION INDEX

	Page	Page	
Brush Guards	9-1	Roll Bars	9-3
Roll Bar Padding	9-5		

BRUSH GUARDS

INSTALLATION

1976-1978 Cherokee-Truck Models

(1) Remove necessary bumper end rail attaching nuts and bolts to provide access holes for brush guard brackets (fig. 9-1).

(2) Position brackets on bumper and install attaching washers and nuts.

NOTE: Do not tighten attaching hardware until complete brush guard is assembled on vehicle and properly aligned.

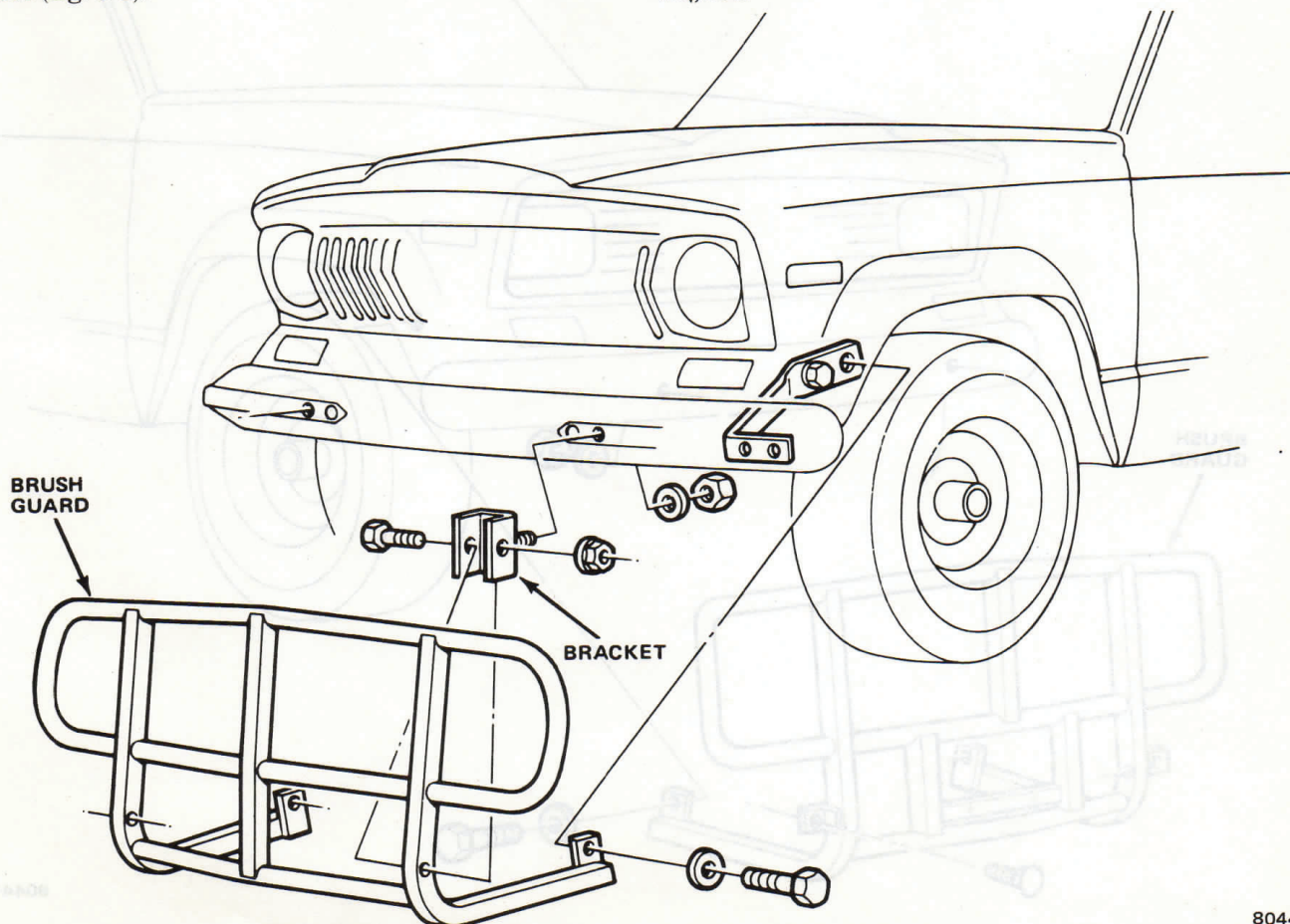


Fig. 9-1 Brush Guard Installation—1976-1978 Cherokee-Truck Models

(3) Position brush guard in brackets and install attaching bolts and nuts.

(4) Install bolts and washers attaching brush guard to frame rails.

(5) Align brush guard assembly and tighten all attaching hardware.

(4) Align brackets on vertical members of brush guard welded frame assembly with bolt holes in bumper.

(5) Install bumper bolts removed in step (3) through holes in bracket and bumper. Install washers and hex nuts on threads extending through bumper. Do not tighten at this time.

(6) Align slots in plates on ends of brush guard square frame tubing with holes through vehicle frame.

(7) Assemble bolts, lockwashers and flat washers and install into slotted brush guard bracket and vehicle frame.

(8) Align brush guard assembly and tighten nuts on inside of bumper.

(9) Tighten bolts through slotted plates into vehicle frame.

1979 Cherokee-Truck Models

(1) Remove license plate bracket.

(2) Remove and install upper front spring shackle bolts so nuts are on inboard side of spring. (This is necessary to provide clearance for brush guard installation.)

(3) Remove bumper bolt from each side of vehicle centerline (fig. 9-2).

NOTE: Refer to torque specification chart when tightening attaching hardware.

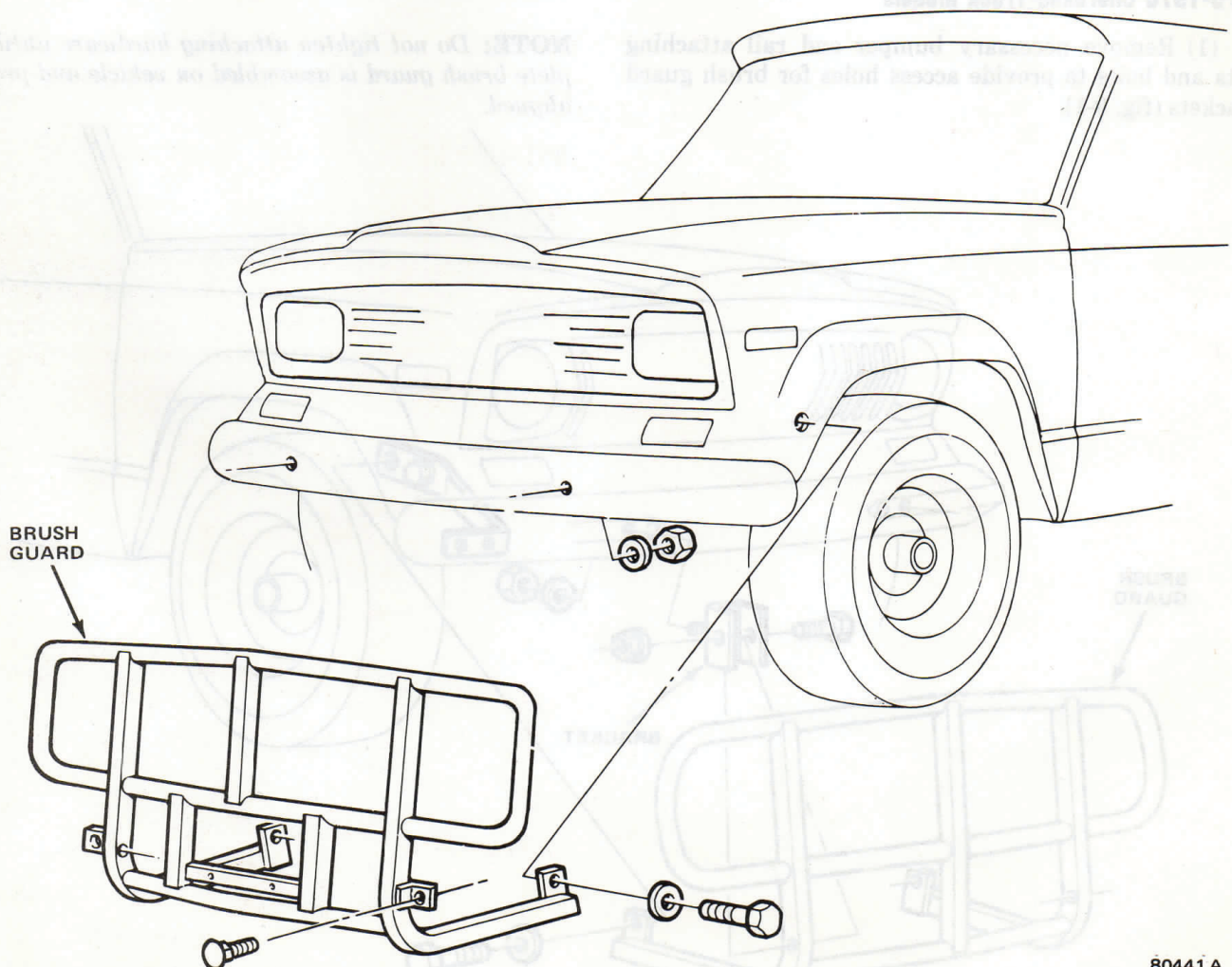


Fig. 9-2 Brush Guard Installation—1979 Cherokee-Truck Models

Jacking Instructions—Cherokee Models

The installation of a brush guard on Cherokee models prevents utilizing the original front bumper jack slots.

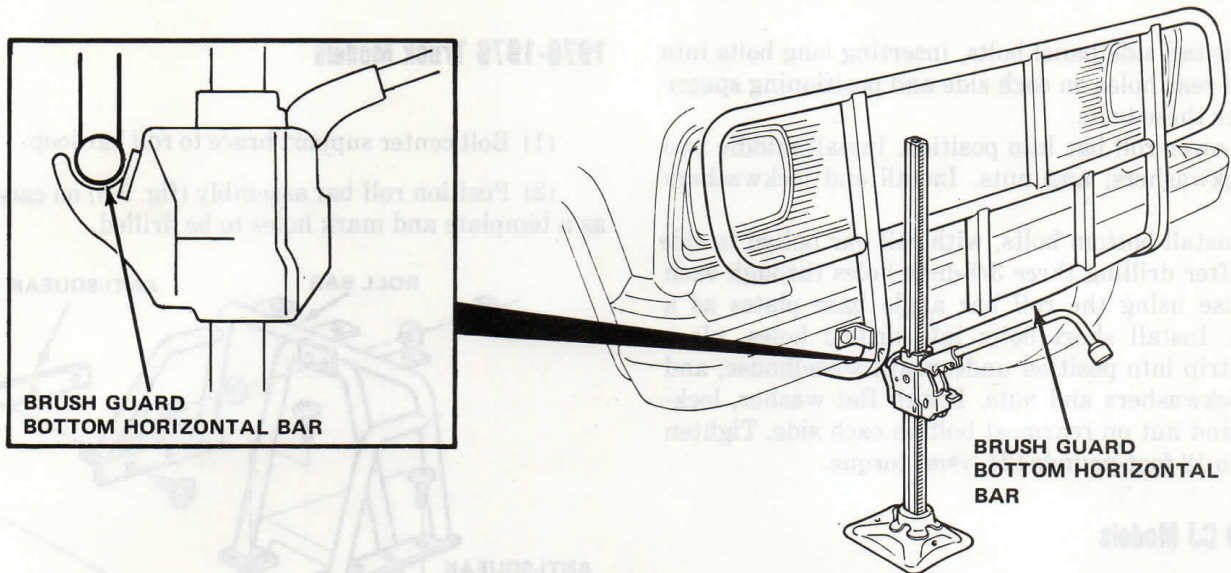


Fig. 9-3 Front Bumper Jack Placement with Brush Guard—Cherokee Models

90518

GENERAL

The roll bars are constructed of tubular steel, electrically welded for maximum strength. Brace angle and design give maximum protection against impact from all directions.

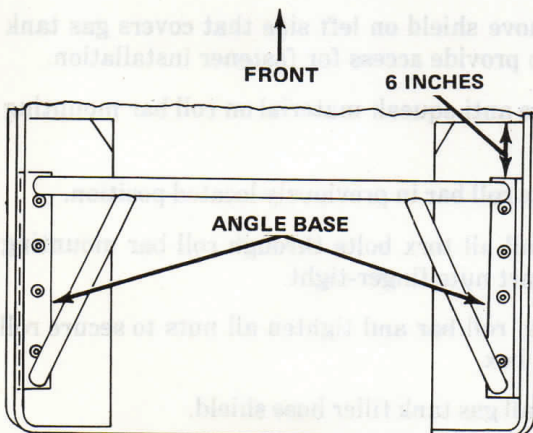
ROLL BARS

INSTALLATION

1976-Early 1979 CJ Models

(1) Place roll bar in vehicle on top of rear wheelhouses. Roll bar must be sprung together slightly to go past lip at top of side panels. Position forward edge of roll bar 6 inches from forward edge of wheelhouse (fig. 9-4).

REAR OF BODY LOOKING FROM ABOVE



VIEW OF RIGHT REAR WHEELHOUSING

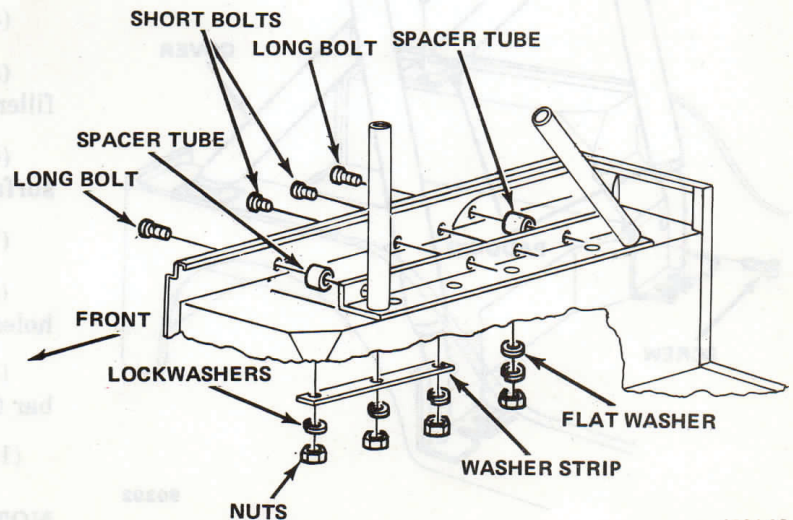


Fig. 9-4 Roll Bar Installation—1976-Early 1979 CJ Models

J50143

9-4 BRUSH GUARDS, ROLL BARS AND PADDING

(2) Drill 3/8-inch diameter holes through body using holes in roll bar angle base plates as a template. Rear hole on bottom of each plate must be marked and roll bar removed before drilling. Drill remaining holes in wheelhouses after roll bar has been bolted to vehicle side panels.

(3) Install side panel bolts, inserting long bolts into front and rear holes on each side and positioning spacer tubes over these bolts.

(4) Lower roll bar into position. Install middle two bolts, lockwashers, and nuts. Install end lockwashers and nuts.

(5) Install bottom bolts, with roll bar bolted to side panels, after drilling three 3/8-inch holes through each wheelhouse using the roll bar angle base plates as a template. Install short bolts into drilled holes, place washer strip into position underneath wheelhouse, and install lockwashers and nuts. Install flat washer, lockwasher, and nut on rearmost bolt on each side. Tighten all nuts to 18 foot-pounds (24 N•m) torque.

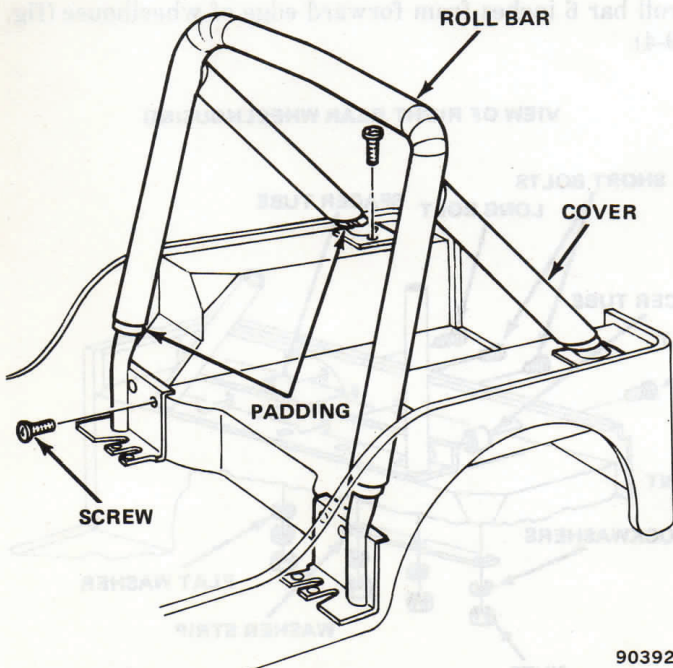
Late 1979 CJ Models

(1) Remove left front seat to ease installation.

NOTE: Before initial installation, check to be certain you have the correct roll bar for your vehicle. The length of the base plates should be 12 inches long for CJ-5 or 8-1/2 inches long for CJ-7. The correct roll bar must be used for proper installation.

(2) Remove plastic plugs from weldnuts, if equipped.

(3) Position roll bar into vehicle (fig. 9-5).



90392

Fig. 9-5 Roll Bar Installation—Late 1979 CJ Models

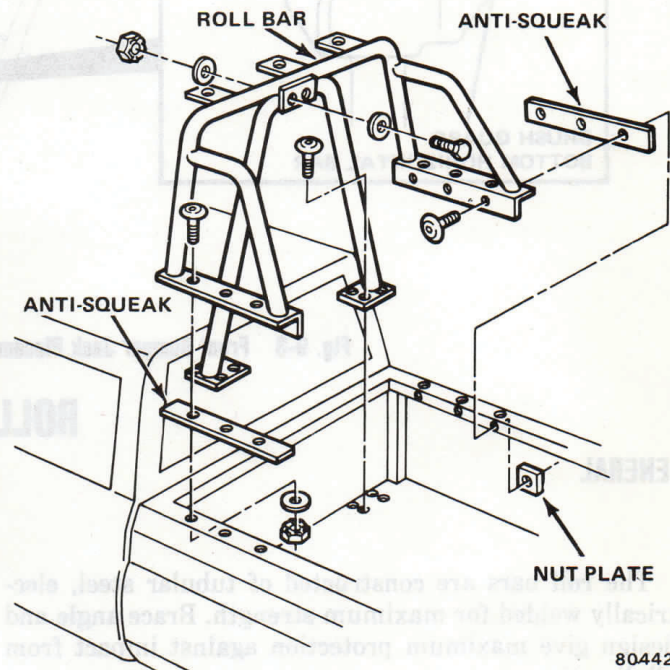
(4) Install roll bar attaching screws and secure roll bar to body.

(5) Install left front seat.

1976-1979 Truck Models

(1) Bolt center support brace to roll bar loop.

(2) Position roll bar assembly (fig. 9-6) on cargo box as a template and mark holes to be drilled.



80442

Fig. 9-6 Roll Bar Installation—1976-79 Truck Models

(3) Once holes are marked, set roll bar assembly to the side.

(4) Drill all marked holes with 3/8-inch drill.

(5) Remove shield on left side that covers gas tank filler hose to provide access for fastener installation.

(6) Place anti-squeak material on roll bar mounting surface.

(7) Place roll bar in previously located position.

(8) Install all torx bolts through roll bar mounting holes and start nuts finger-tight.

(9) Align roll bar and tighten all nuts to secure roll bar to cargo box.

(10) Install gas tank filler hose shield.

NOTE: Torx bolts are number 45 for the roll bar installation.

ROLL BAR PADDING

GENERAL

The roll bar padding is constructed of thick, molded foam rubber covered by tough vinyl with full zippers.

INSTALLATION

1976-Early 1979 CJ Models

(1) Place long section of foam over main hoop of roll bar and secure with masking tape. (The slit in the foam should face to the rear.)

(2) Install the two short pieces of foam on the roll bar braces in the same manner.

(3) Zipper the long section of cover over padding.

NOTE: *The cutouts in the cover for the braces need to face to the rear.*

(4) Zipper the two short sections of cover over the padded roll bar braces.

NOTE: *Zippers should be on bottom of bars for best appearance.*

Late 1979 CJ Models

(1) Remove driver seat and move passenger seat forward to obtain working room.

(2) Install padding on back support bars and secure with masking tape.

(3) Install long section of padding over main hoop of roll bar and secure with masking tape.

NOTE: *It may be necessary to trim padding at roll bar weld joints to obtain proper cover fit.*

(4) Install roll bar cover (fig. 9-5).

NOTE: *It may be necessary to pry the body panels away from roll bar with a piece of wood to ease installation of cover.*

(5) Install driver seat and reposition passenger seat.