

SECTION 18

MISCELLANEOUS KITS—

CHEROKEE-WAGONEER-TRUCK MODELS

SECTION INDEX

	Page		Page
Load Binder	18-2	Skid Plates	18-2
Rear Step Bumper	18-1	Tie Down Rails	18-3

REAR STEP BUMPER

INSTALLATION—TRUCK MODELS

All installation hardware is supplied with the kit. The mounting brackets are tack welded inside bumper for shipping purposes. Remove by breaking the weld.

(1) Lower tailpipe by installing adaptor clip between tailpipe bracket and vehicle frame. Use 5/16 x 3/4-inch hex-head bolts.

NOTE: Lowering tailpipe may not be necessary for all truck models.

(2) With bumper on floor and ends upward, attach mounting brackets (fig. 18-1) to bumper. Install flat washers adjacent to all slots.

(3) Clamp bumper to floor jack. Raise bumper and align holes in mounting brackets with holes in vehicle frame.

(4) Install bolts, flat washers, lockwashers and nuts. Do not tighten.

(5) Level and align bumper so that 1/2 inch clearance exists between vehicle body and bumper.

(6) Tighten all nuts.

(a) Tighten SAE Grade Two 7/16-inch bolts to 21 foot-pounds (28 N•m) torque.

(b) Tighten SAE Grade Five 1/2-inch bolts to 45 foot-pounds (61 N•m) torque.

(c) Tighten SAE Grade Eight 7/16-inch bolts to 40 foot-pounds (55 N•m) torque.

(7) Insert license plate light assemblies in bumper and connect couplers between vehicle wire outlets and light wires.

NOTE: When applying safety strips to bumper, the temperature must be at least 50°F (10°C) for proper adhesion.

(8) Apply an anti-slip safety strip 3/4 inch from edge of bumper and 1 inch from diagonal edge of license plate/hitch cutout area. Apply second strip 2 inches forward of first strip. Repeat for opposite side of bumper.

(9) With roller or other hard object, start at one end of each strip and press length of tape tightly against bumper surface.

WARNING: The maximum gross load weight that can be pulled with a rear step bumper is 7,000 pounds (3175 kg). The maximum tongue weight is 1,000 pounds (454 kg).

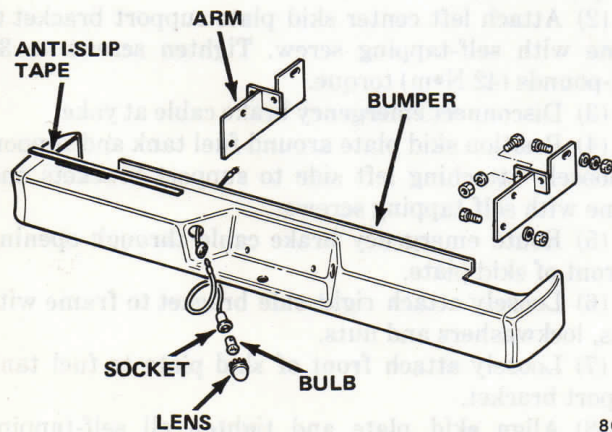


Fig. 18-1 Rear Step Bumper

LOAD BINDER

INSTALLATION—TRUCK MODELS

Load binders may be installed only on truck models that have body side panels with stake pockets.

Insert each end of load binder frame into a stake pocket. Any opposite pair of stake pockets may be used for securing load (fig. 18-2).

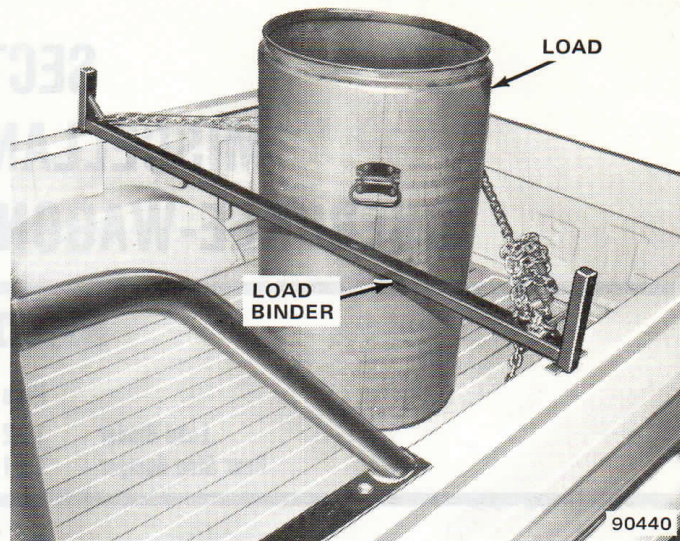


Fig. 18-2 Load Binder

SKID PLATES

INSTALLATION—TRUCK MODELS

All attaching hardware is included with the kit. The bolt and screw holes are pre-punched in the vehicle frame and body.

- (1) Position skid plate around fuel tank (fig. 18-3).

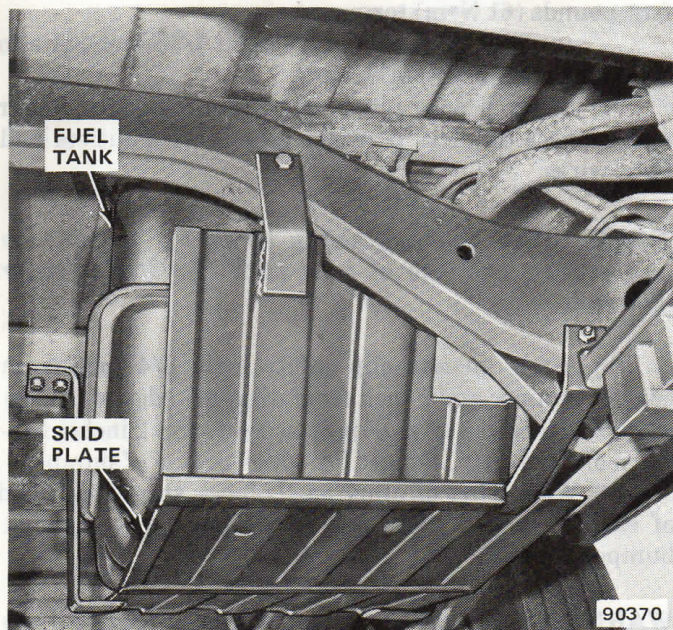


Fig. 18-3 Skid Plate—Truck Models

- (2) Loosely attach skid plate to vehicle frame with bolts, lockwashers and nuts.

- (3) Secure skid plate to vehicle body with self-tapping screws.

- (4) Tighten all nuts to 30 foot-pounds (42 N•m) torque.

INSTALLATION—CHEROKEE-WAGONEER

All attaching hardware is included with the kit. All holes are pre-punched in the vehicle frame.

- (1) Attach left rear skid plate support bracket to frame with self-tapping screws. Tighten screws to 30 foot-pounds (42 N•m) torque.

- (2) Attach left center skid plate support bracket to frame with self-tapping screw. Tighten screws to 30 foot-pounds (42 N•m) torque.

- (3) Disconnect emergency brake cable at yoke.

- (4) Position skid plate around fuel tank and support by loosely attaching left side to support brackets and frame with self-tapping screws.

- (5) Route emergency brake cable through opening in front of skid plate.

- (6) Loosely attach right side bracket to frame with bolts, lockwashers and nuts.

- (7) Loosely attach front of skid plate to fuel tank support bracket.

- (8) Align skid plate and tighten all self-tapping screws and nuts to 30 foot-pounds (42 N•m) torque.

- (9) Connect emergency brake cable and adjust.

TIEDOWN RAILS

INSTALLATION—TRUCK MODELS

Tiedown rail kits are available for all Truck models. Ensure all kit components are available before initiating installation.

(1) Attach load restrainers to inner side of each side rail.

(a) With studs inserted into guides, slide assemblies into side rail channel. Tangs on guide face inward (fig. 18-4).

(b) Position studs so that they will be located approximately an equal distance from each support. Hand-tighten nuts on studs.

NOTE: Once the side rails are attached to the supports, the load restrainers cannot be slid past the supports. Ensure they are properly located prior to installing supports.

NOTE: If tiedown rails are being installed on a vehicle with a 7-foot box, 12 inches must be cut from the aft end of each side rail.

(2) Slide center supports onto side rail and position so that they are adjacent to screw holes and an equal distance from each end of rail. Secure supports with 8-32 x 3/8-inch screws (fig. 18-4).

(3) Insert each end of side rail into end support. Secure with 8-32 x 3/8-inch screws.

(4) Centrally locate each tie-down rail assembly on top of body side panels. Using supports as templates, mark locations for screw holes. Remove tiedown rail assemblies.

(5) Centerpunch and drill 9/32-inch holes in top of each body side panel.

(6) With pads in position, secure each tiedown rail assembly to top of body side panels with 1/4-inch screws, washers and nuts (fig. 18-4). Tighten nuts to 10 foot-pounds (14 N•m) torque.

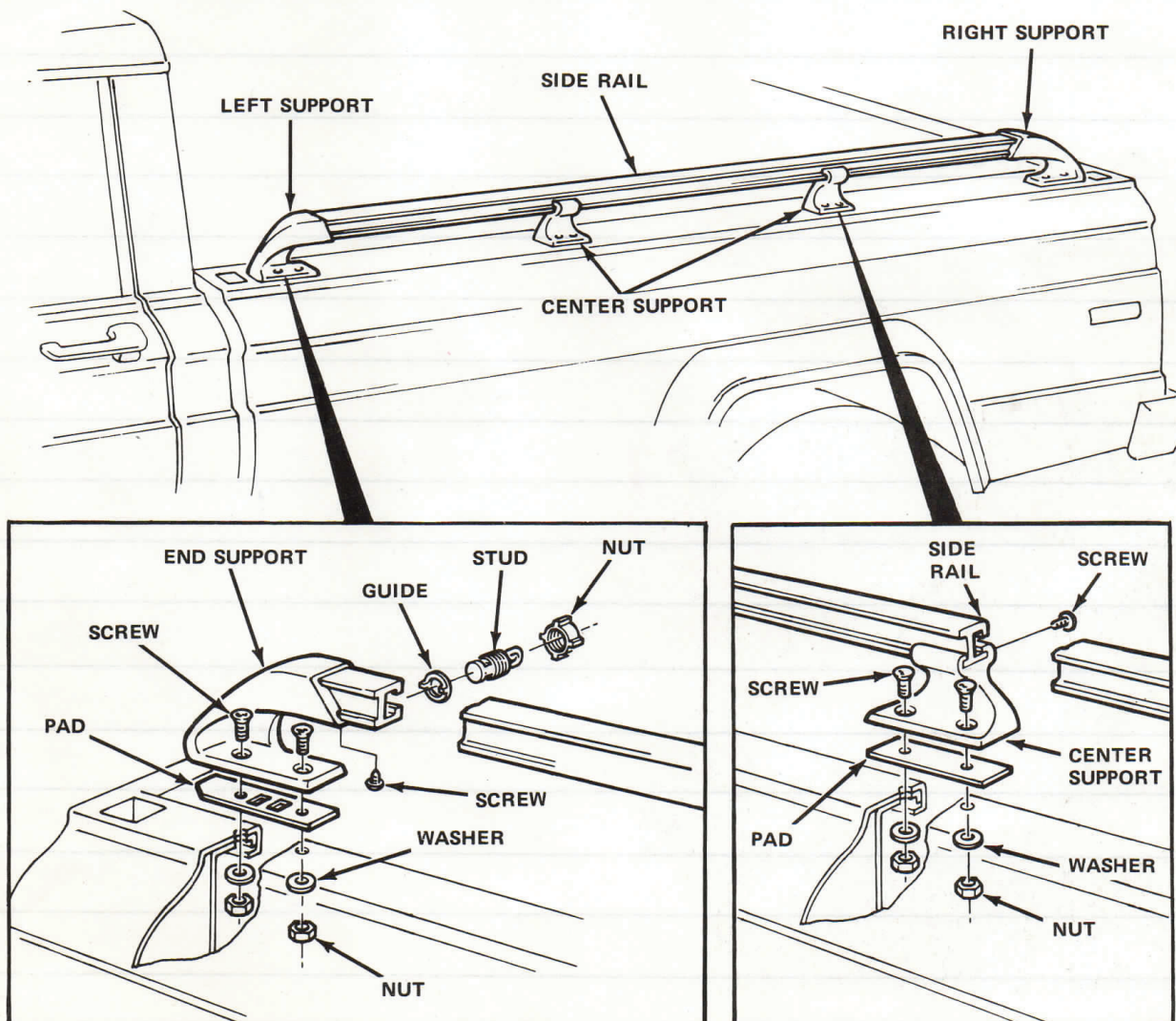


Fig. 18-4 Tiedown Rail Assembly