

SPECIAL INFORMATION

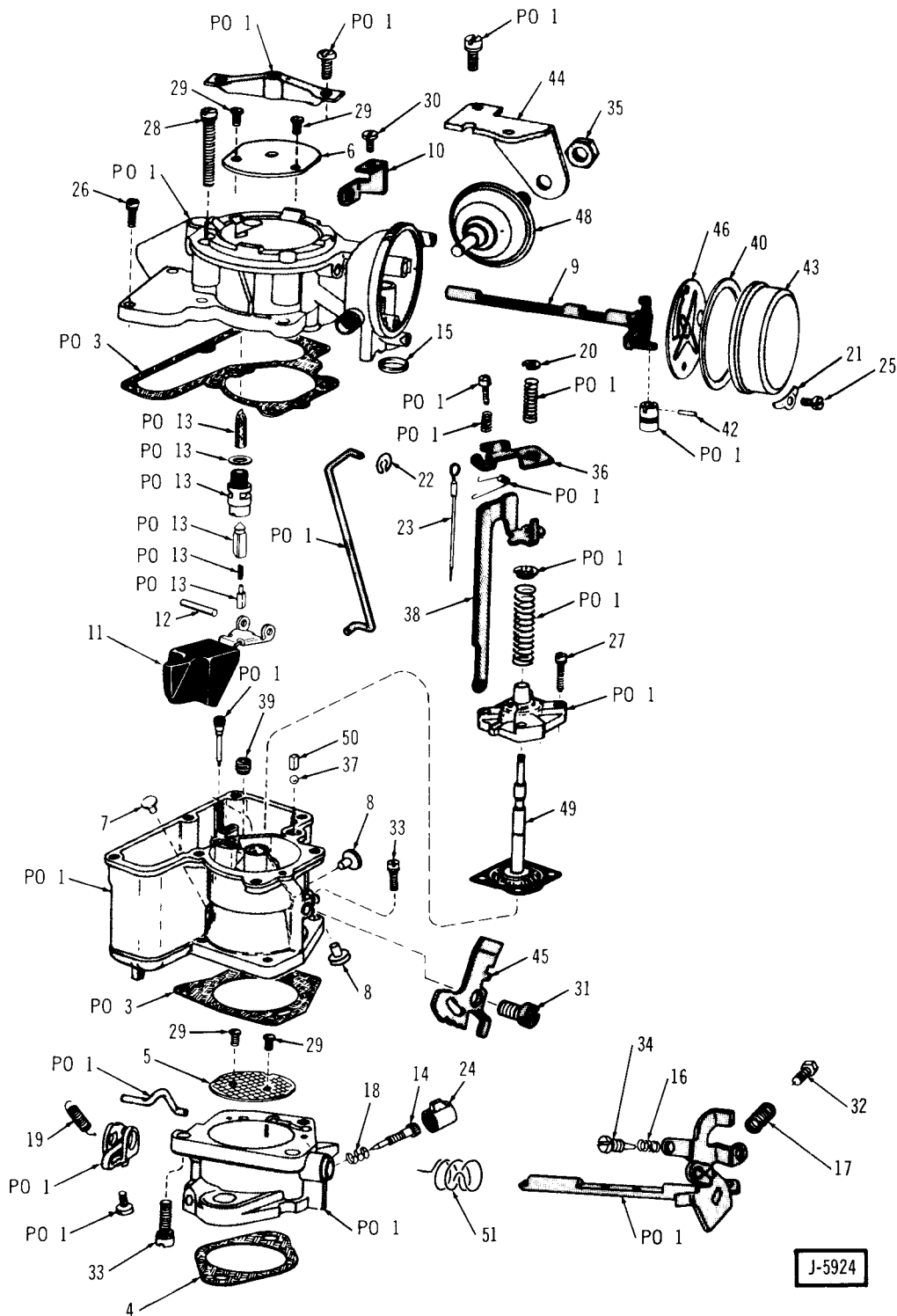
The Engine Build Code Number, the Vehicle Identification Number and the information provided on the Trim Plate are often necessary when determining the proper replacement parts for your vehicle. For their location refer to the General Information Section found at the front of this catalog.

NOTES

- 4-1 Used with Canister Shield that has a 5/16" Dia. attachment hole.
- 4-2 Used with Canister Shield that has a 3/8" x 3/4" slotted attachment hole.
- 4-5 On 1974 (Six) the Outlet Tubes on the Coolant Override Switch are in horizontal position.
- 4-6 On 1974 (Six) the Outlet Tubes on the Coolant Override Switch are in vertical position.
- 4-9 Used with Catalytic Converter.
- 4-10 Used less Catalytic Converter.
- 4-7 Used on 1974 vehicles equipped with Flexible Nylon Fuel Line between Fuel Pump and Gas Tank.
- 4-8 Used on 1974 vehicles equipped with Metal Tubing for Fuel Line between Fuel Pump and Gas Tank.
- 4-9 Used with Catalytic Converter.
- 4-10 Used Less Catalytic Converter.
- 4-11 Air Vent Tube protrudes straight from Gas Tank.
- 4-12 Air Vent Tube is parallel to side of Gas Tank.
- 4-13 Used with Filler Neck with molded Flange.
- 4-14 Used with Filler Neck less molded Flange.
- 4-15 Filler Pipe includes Clip with 5/16" Hole.
- 4-16 Filler Pipe includes Clip with 1/2" x 3/4" Hole.
- 4-17 Metering Rod Arm has a hooked end for attaching.
- 4-18 Metering Rod Arm has an enclosed hole for hooking.
- 4-19 In 1976, used less the Flex-N-Gate Bumper.
- 4-20 In 1976, used with the Flex-N-Gate Bumper.

CARBURETOR CHART INDEX

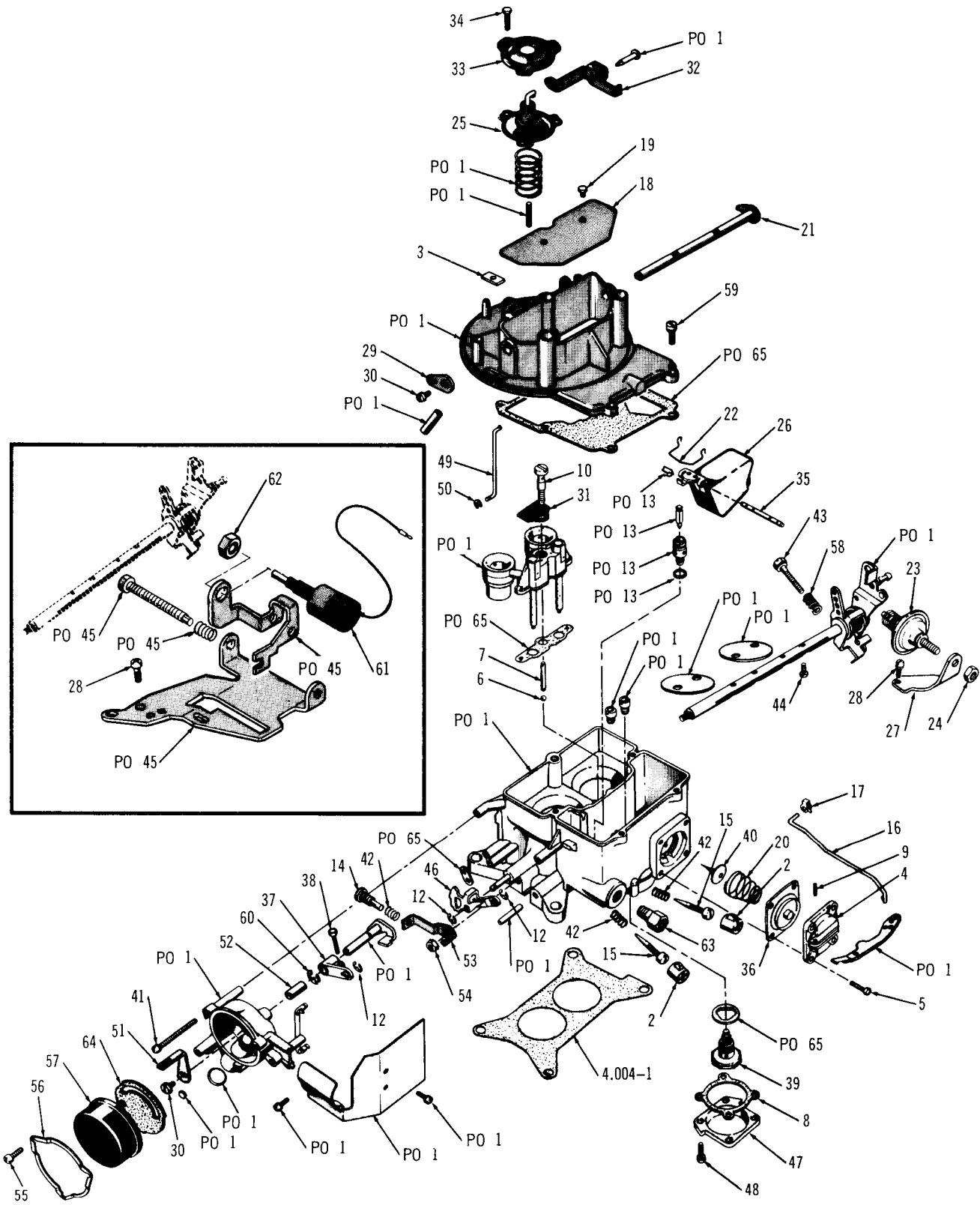
6 CYLINDER	ILLUSTRATION PAGE	CHART PAGE
YF-6428	Gr 4 - C 2	Gr 4 - C 3
YF-6431	Gr 4 - C 2	Gr 4 - C 3
YF-6432	Gr 4 - C 2	Gr 4 - C 3
YF-6511	Gr 4 - C 2	Gr 4 - C 3
YF-7001	Gr 4 - C 2	Gr 4 - C 3
YF-7039	Gr 4 - C 8	Gr 4 - C 9
YF-7040	Gr 4 - C 8	Gr 4 - C 9
YF-7041	Gr 4 - C 8	Gr 3 - C 9
YF-7043	Gr 4 - C 8	Gr 4 - C 9
YF-7083	Gr 4 - C 14	Gr 4 - C 15
YF-7084	Gr 4 - C 14	Gr 4 - C 15
YF-7085	Gr 4 - C 14	Gr 4 - C 15
YF-7088	Gr 4 - C 14	Gr 4 - C 15
YF-7109	Gr 4 - C 14	Gr 4 - C 15
8 CYLINDER	ILLUSTRATION PAGE	CHART PAGE
4DM2	Gr 4 - C 4	Gr 4 - C 5
4DMJ2	Gr 4 - C 4	Gr 4 - C 5
4RA2	Gr 4 - C 4	Gr 4 - C 5
4RHD2	Gr 4 - C 4	Gr 4 - C 5
4TA4	Gr 4 - C 6	Gr 4 - C 7
4THD4	Gr 4 - C 6	Gr 4 - C 7
5DM2	Gr 4 - C 12	Gr 4 - C 13
5DMJ2	Gr 4 - C 12	Gr 4 - C 13
5RHA2	Gr 4 - C 12	Gr 4 - C 13
5RHM2	Gr 4 - C 12	Gr 4 - C 13
5THA4	Gr 4 - C 10	Gr 4 - C 11
5THA4D	Gr 4 - C 10	Gr 4 - C 11
5THM4	Gr 4 - C 10	Gr 4 - C 11
5THM4D	Gr 4 - C 10	Gr 4 - C 11
6DA2J	Gr 4 - C 16	Gr 4 - C 17
6DM2	Gr 4 - C 16	Gr 4 - C 17
6RHA2	Gr 4 - C 16	Gr 4 - C 17
6RHM2	Gr 4 - C 16	Gr 4 - C 17
6THA4	Gr 4 - C 18	Gr 4 - C 19
6THA4C	Gr 4 - C 18	Gr 4 - C 19
6THM4	Gr 4 - C 18	Gr 4 - C 19



SEE CHART FACING PAGE ►

KEY NO.	DESCRIPTION	PAKS CODE	GROUP NO.	PER CAR	PART NO.	PART NO.	PART NO.	PART NO.	PART NO.
					YF-6423	YF-6431	YF-6432	YF-6511	YF-7001
1	CARBURETOR		4.001	1	321 9471	321 9502	321 9503	322 0505	322 3868
2	REPAIR KIT		4.001	1	812 2897	812 2897	812 2897	812 4351	812 4351
3	GASKET SET	103	4.001	1	812 2898	812 2898	812 2898	812 2898	812 2898
4	FLANGE GASKET		4.001	1	317 3228	317 3228	317 3228	317 3228	317 3228
5	VALVE		4.001	1	448 8314	448 8314	448 8314	448 8314	448 8314
6	VALVE		4.001	1	448 9432	448 9432	448 9432	448 9432	448 9432
7	PLUG		4.001	1	320 3802	320 3802	320 3802	320 3802	320 3802
8	PLUG		4.001	2	320 3805	320 3805	320 3805	320 3805	320 3805
9	SHAFT		4.001	1	812 0957	812 0957	812 0957	812 0957	812 0957
10	LEVER		4.001	1	812 0958	812 0958	812 0958	812 0958	812 0958
11	FLOAT		4.001	1	812 3050	812 3050	812 3050	812 3050	812 3050
12	PIN		4.001	1	812 4315	812 4315	812 4315	812 4315	812 4315
13	NEEDLE ASSY.	110	4.001	1	448 8048	448 8048	448 8048	448 8048	448 8048
14	SCREW		4.001	1	812 2355	448 8036	448 8036	448 8036	448 8036
15	PLUG		4.001	1	320 3814	320 3814	320 3814	320 3814	320 3814
16	SPRING		4.001	1	812 1248	812 1248	812 1248	812 1248	812 1248
17	SPRING		4.001	1	320 5125	320 5125	320 5125	320 5125	320 5125
18	SPRING		4.001	1	320 3844	320 3844	320 3844	320 3844	320 3844
19	SPRING		4.001	1	448 8065	448 8065	448 8065
20	RETAINER		4.001	1	320 3820	320 3820	320 3820	320 3820	320 3820
21	RETAINER		4.001	3	320 3818	320 3818	320 3818	320 3818	320 3818
22	RETAINER		4.001	1	812 1249	812 1249	812 1249	812 1249	812 1249
23	ROD		4.001	1	812 2892	812 3171	812 3171	812 3171	812 3171
24	WAP		4.001	1	448 8054	448 8054	448 8054	448 8054	448 8054
25	SCREW		4.001	3	320 6431	320 6431	320 6431	320 6431	320 6431
26	SCREW		4.001	3	320 6432	320 6432
	SCREW		4.001	4	320 6432	320 6432	320 6432
27	SCREW		4.001	4	320 6433	320 6433	320 6433	320 6433	320 6433
28	SCREW		4.001	3	320 7738	320 7738	320 7738	320 7738	320 7738
29	SCREW		4.001	4	320 7745	320 7745	320 7745	320 7745	320 7745
30	SCREW		4.001	1	812 1251	812 1251	812 1251	812 1251	812 1251
31	SCREW		4.001	1	812 1252	812 1252	812 1252	812 1252	812 1252
32	SCREW		4.001	1	812 1253	812 1253	812 1253	812 1253	812 1253
33	SCREW		4.001	3	812 0222	812 0222	812 0222	812 0222	812 0222
34	SCREW		4.001	1	812 0959	812 0959	812 0959	812 0959	812 0959
35	NUT		4.001	1	320 6802	320 6802	320 6802
36	ARM		4.001	1	812 2894	812 2894	812 2894	812 2894	812 2894
37	BALL		4.001	1	812 0145	812 0145	812 0145	812 0145	812 0145
38	LINK		4.001	1	812 5685	812 5685	812 2895	812 2895	812 5685
39	JET		4.001	1	448 8445	448 8445	448 8445	448 8445	448 8445
40	GASKET		4.001	1	448 5888	448 5888	448 5888	448 5888	448 5888
41	WASHER		4.001	1
42	PIN		4.001	1	320 7761	320 7761	320 7761	320 7761	320 7761
43	OIL AND HOUSING		4.001	1	448 8063	448 8063	448 8063	448 8063	448 8063
44	BRACKET		4.001	1	812 0962	812 0962	812 0962	812 4350
45	CAM		4.001	1	812 1254	812 1254	812 1254	812 1254	812 1254
46	PLATE		4.001	1	320 6442	320 6442	320 6442	320 6442	320 6442
48	DASHPOT		4.001	1	812 0135	812 0135
49	DIAPHRAGM		4.001	1	448 8066	448 8066	448 8066	448 8066	448 8066
50	WEIGHT		4.001	1	812 0149	812 0149	812 0149	812 0149	812 0149
51	SPRING		4.001	1	812 5683	812 5683	812 5683	812 5683

◀ SEE ILLUSTRATION FACING PAGE

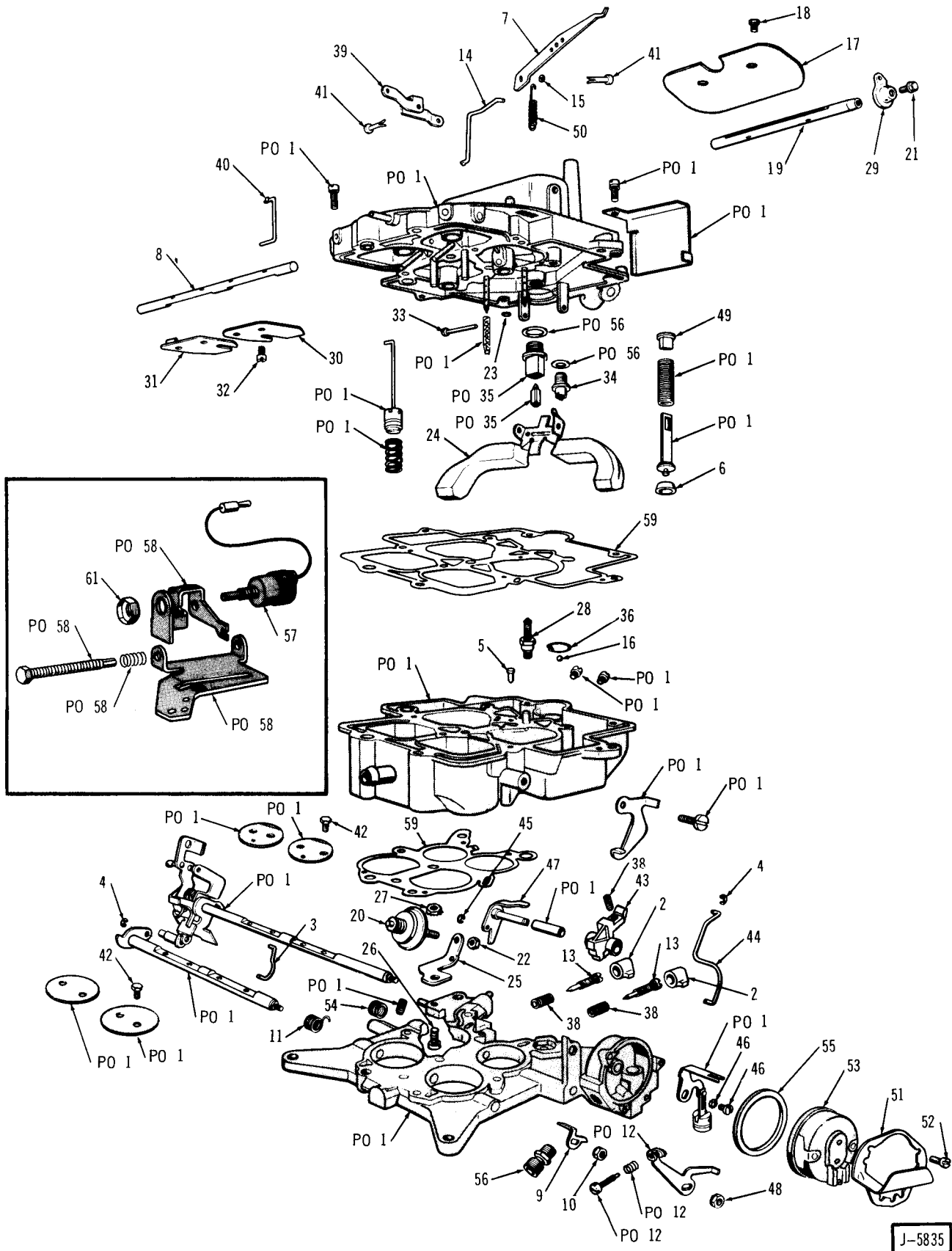


J-5834

SEE CHART FACING PAGE ►

KEY NO.	DESCRIPTION	PAKS CODE	GROUP NO.	PER CAR	PART NO.	PART NO.	PART NO.	PART NO.
					4DMJ2	4DM2	4RA2	4RHD2
1	CARBURETOR		4.001	1	535 2310	322 2317	322 2320	535 2308
2	LIMITER		4.001	2	320 9879	320 9879	320 9879	320 9879
3	SEAL		4.001	1	320 9880	320 9880	320 9880	320 9880
4	COVER	88	4.001	1	812 1326	812 1326	812 1326	812 1326
5	SCREW		4.001	4	448 8169	448 8169	448 8169	448 8169
6	BALL		17.018	1	G145637	G145637	G145637	G145637
7	WEIGHT		4.001	1	812 3037	812 3037	812 3037	812 3037
8	GASKET		4.001	1	320 9885	320 9885	320 9885	320 9885
9	PIN		4.001	1	320 9891	320 9891	320 9891	320 9891
10	SCREW		4.001	1	320 9892	320 9892	320 9892	320 9892
11	ROD		4.001	1	320 9893	320 9893	320 9893	320 9893
12	WASHER		4.001	3	448 8171	448 8171	448 8171	448 8171
13	VALVE KIT	83	4.001	1	448 8172	448 8172	448 8172	448 8172
14	SCREW		4.001	1	812 1329	812 1329	812 1329	812 1329
15	NEEDLE		4.001	2	448 8173	448 8173	448 8173	448 8173
16	ROD		4.001	1	812 1672	812 1672	812 1672	812 1672
17	FLIP		4.001	1	812 4455	812 4455	812 4455	812 4455
18	PLATE		4.001	1	448 8175	448 8175	448 8175	448 8175
19	SCREW		4.001	2	320 9901	320 9901	320 9901	320 9901
20	SPRING		4.001	1	812 5040	812 5040	812 5040	812 5040
21	SHAFT		4.001	1	448 8176	448 8176	448 8176	320 8176
22	RETAINER		4.001	1	812 1330	812 1330	812 1330	812 1330
23	DASHPOT		4.001	1	320 9905	320 9905
24	NUT		4.001	1	320 9906
25	DIAPHRAGM		4.001	1	812 1417	812 1417	812 1417	812 1417
26	FLOAT		4.001	1	448 8178	448 8178	448 8178	448 8178
27	BRACKET		4.001	1	448 8322	448 8322	448 8322
28	SCREW		4.001	1	448 5440	448 5440	448 5440	448 5440
29	LEVER		4.001	1	448 8179	448 8179	448 8179	448 8179
30	SCREW		4.001	2	448 5446	448 5446	448 5446	448 5446
31	PLATE		4.001	1	448 8180	448 8180	448 8180	448 8180
32	LEVER		4.001	1	812 0068	812 0068	812 0068	812 0068
33	COVER		4.001	1	448 8182	448 8182	448 8182	448 8182
34	SCREW		4.001	3	448 8183	448 8183	448 8183	448 8183
35	SHAFT		4.001	1	320 9910	320 9910	320 9910	320 9910
36	DIAPHRAGM		4.001	1	320 9912	320 9912	320 9912	320 9912
37	LEVER		4.001	1	320 9913	320 9913	320 9913	320 9913
38	SCREW		4.001	1	812 0069	812 0069	812 0069	812 0069
39	VALVE		4.001	1	812 5042	812 5042	812 5041	812 3039
40	VALVE		4.001	1	320 9916	320 9916	320 9916	320 9916
41	SCREW		4.001	3	448 5441	448 5441	448 5441	448 5441
42	SPRING		4.001	3	320 9917	320 9917	320 9917	320 9917
43	SCREW		4.001	1	448 5442	448 5442	448 5442	448 5442
44	SCREW		4.001	4	812 3040	812 3040	812 3040	812 3040
45	BRACKET		4.001	1
46	CAM		4.001	1	320 9919	320 9919	320 9919	320 9919
47	COVER		4.001	1	812 5043	812 5043	812 5043	320 9920
48	SCREW		4.001	4	448 5445	448 5445	448 5445	448 5445
49	ROD		4.001	1	448 8246	448 8246	448 8246	448 8246
50	RING		4.001	1	320 9922	320 9922	320 9922	320 9922
51	LEVER		4.001	1	812 1420	812 1420	812 1420	812 1420
52	BUSHING		4.001	1	448 8477	448 8477	448 8477	448 8477
53	LEVER		4.001	1	812 1331	812 1331	812 1331	812 1331
54	NUT AND WASHER		17.412	1	G271169	G271169	G271169	G271169
55	SCREW		4.001	3	448 5447	448 5447	448 5447	448 5447
56	CLASP		4.001	1	812 3150	812 3150	812 3150	812 3150
57	HOUSING		4.001	1	812 2959	812 2959	812 2959	812 2959
58	SPRING		4.001	1	320 9928	320 9928	320 9928	320 9928
59	SCREW		4.001	4	448 5444	448 5444	448 5444	448 5444
60	WASHER		4.001	2	320 9925	320 9925	320 9925	320 9925
61	SOLENOID		4.001	1
62	NUT		17.428	1
63	FITTING		17.160	1	G137406	G137406	G137406	G137406
64	GASKET		4.001	1	812 1333	812 1333	812 1333	812 1333
65	GASKET SET		4.001	1	812 5061	812 5061	812 5061	812 5061
66	REPAIR KIT		4.001	1	812 5059	812 5059	812 5059	812 5060

◀ SEE ILLUSTRATION FACING PAGE

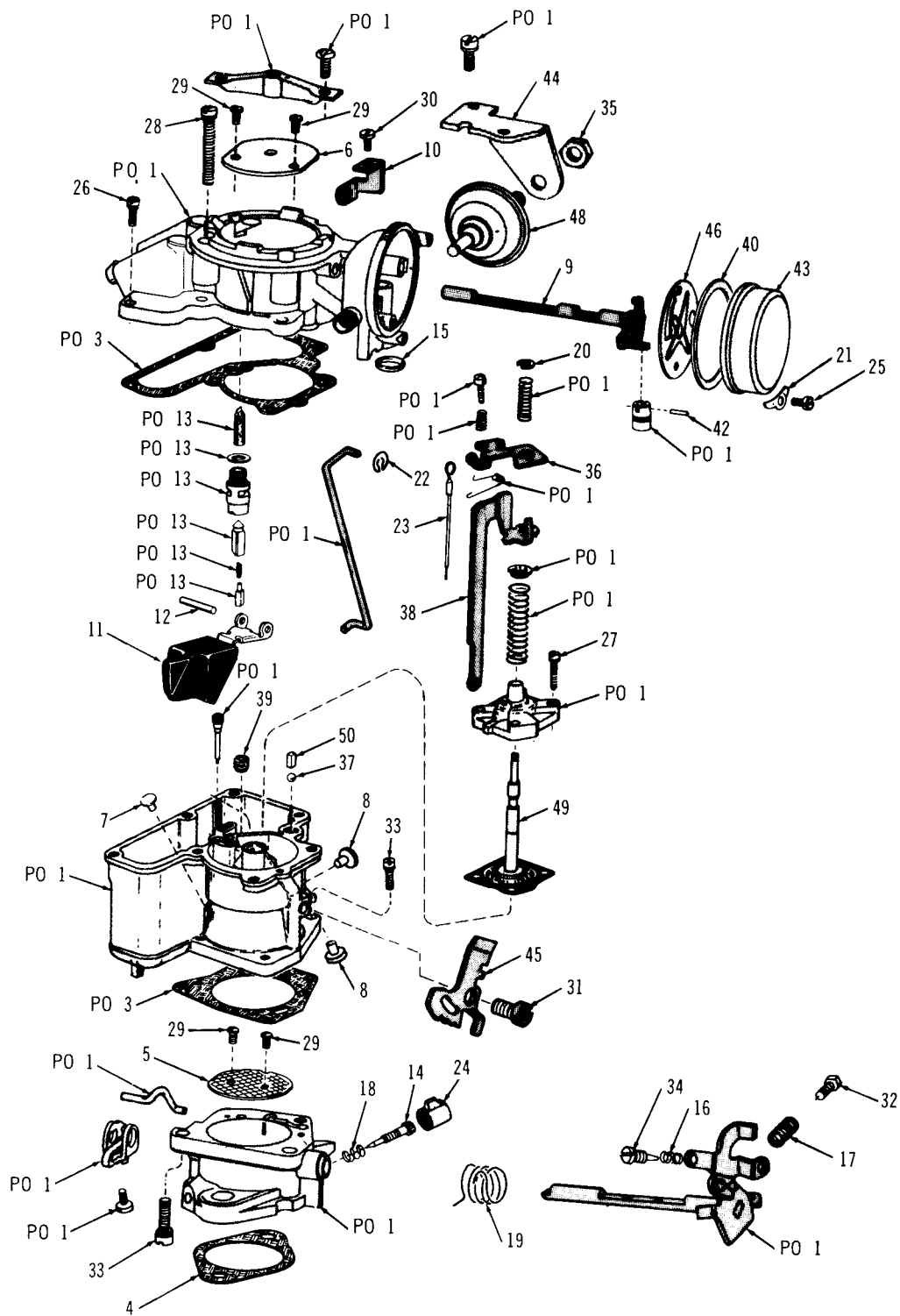


J-5835

SEE CHART FACING PAGE ►

KEY NO.	DESCRIPTION	GROUP NO.	PER CAR	PART NO.	
				4TA4	4THD4
1	CARBURETOR	4.001	1	322 2323	535 2309
2	LIMITER	4.001	2	320 9879	320 9879
3	ROD	4.001	1	448 8185	448 8185
4	RING	4.001	2	448 8186	448 8186
5	VALVE	4.001	1	448 8187	448 8187
6	CUP	4.001	1	448 8388	448 8388
7	LINK	4.001	1	448 8188	448 8188
8	SHAFT	4.001	1	812 1422	812 1422
9	LEVER	4.001	1	448 8190	448 8190
10	NUT	4.001	1	448 8191	448 8191
11	SPRING	4.001	1	448 8192	448 8192
12	LEVER AND SCREW	4.001	1	812 0013	812 0013
13	NEEDLE	4.001	2	448 8193	448 8193
14	ROD	4.001	1	448 8194	448 8194
15	WASHER	4.001	1	448 8195	448 8195
16	BALL	17.018	1	G145637	G145637
17	PLATE	4.001	1	448 8196	448 8196
18	SCREW	4.001	2	320 9901	320 9901
19	SHAFT	4.001	1	448 8197	448 8197
20	DASHPOT	4.001	1
21	SCREW	4.001	1	448 8222	448 8222
22	NUT	4.001	1
24	FLOAT	4.001	1	448 8099	812 2490
25	BRACKET	4.001	1
26	SCREW	4.001	1	812 2489	812 2489
27	NUT	4.001	1	448 8191	448 8191
28	VALVE	4.001	1	812 2960	812 2960
29	LEVER	4.001	1	448 8218	448 8218
30	VALVE	4.001	1	448 8219	448 8219
31	VALVE	4.001	1	448 8220	448 8220
32	SCREW	4.001	4	448 8221	448 8221
33	SHAFT	4.001	1	448 8223	448 8223
34	VALVE	4.001	1	812 2961	812 2961
35	VALVE	4.001	1	812 0010	812 0010
36	RETAINER	4.001	1	448 8226	448 8226
37	SPRING	4.001	2	320 9917	320 9917
38	SCREW	4.001	1	448 8229	448 8229
39	LEVER	4.001	1	448 8230	448 8230
40	LINK	4.001	1	448 8231	448 8231
41	PIN	4.001	2	448 8232	448 8232
42	SCREW	4.001	8	448 8233	448 8233
43	CAM	4.001	1	812 3041	812 3041
44	ROD	4.001	1	448 8238	448 8238
45	RING	4.001	1	448 8186	448 8186
46	SCREW	4.001	1	448 8239	448 8239
47	SHAFT	4.001	1	812 2491	812 2491
48	NUT	17.412	1	G271169	G271169
49	RETAINER	4.001	1	448 8242	448 8242
50	SPRING	4.001	1	448 8243	448 8243
51	CLAMP	4.001	1	448 6603	448 6603
52	SCREW	4.001	3	448 5447	448 5447
53	HOUSING	4.001	1	812 2962	812 2962
54	SPRING	4.001	1	448 8244	448 8244
55	GASKET	4.001	1	812 1333	812 1333
56	CONNECTOR	4.001	1	448 8245	448 8245
57	SOLENOID	4.001	1	812 0480	812 0480
58	BRACKET	4.001	1	812 1167	812 1167
59	REPAIR KIT	4.001	1	812 5062	812 5062
60	GASKET SET	4.001	1	812 5063	812 5063

◀ SEE ILLUSTRATION FACING PAGE

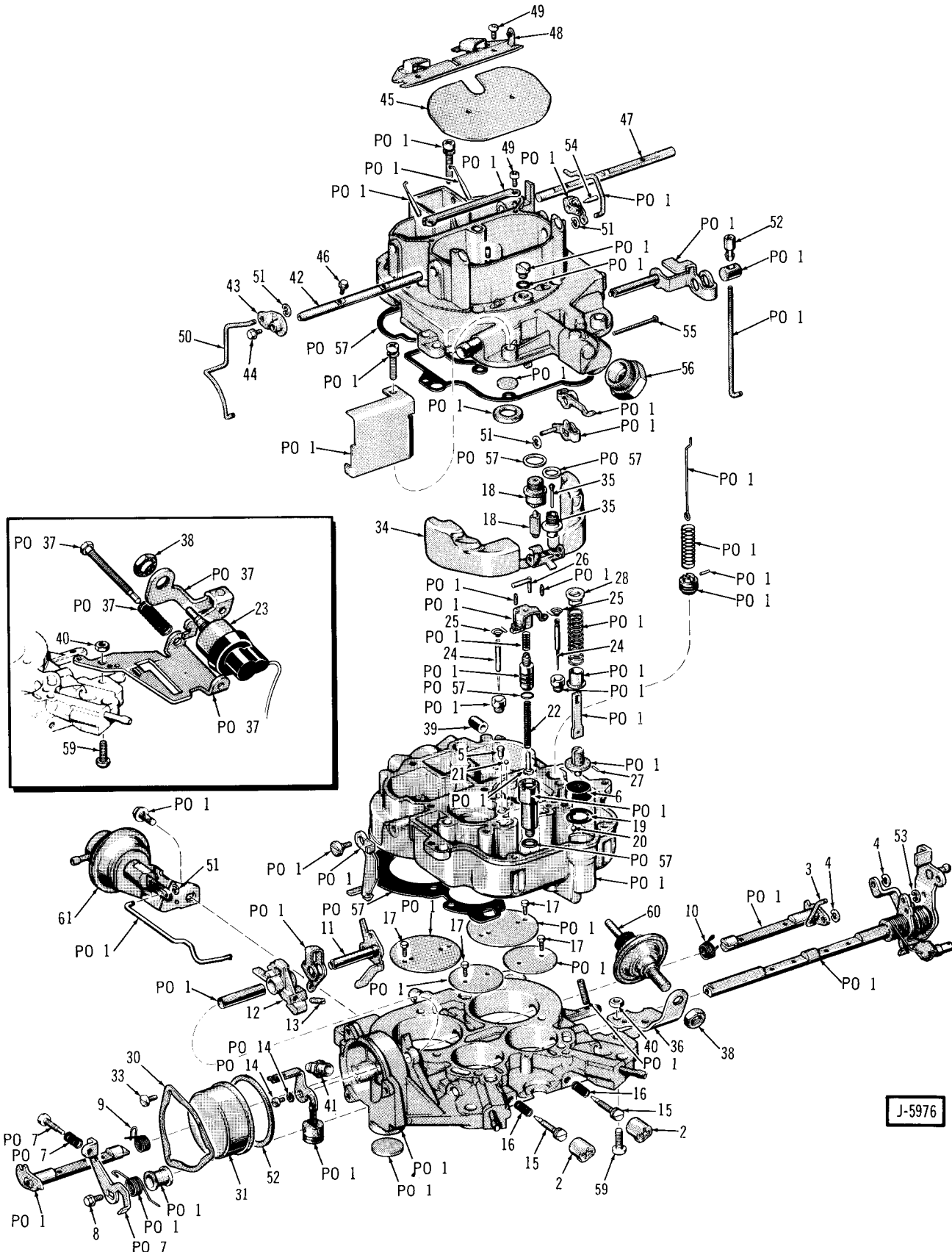


J-5982

SEE CHART FACING PAGE ►

KEY NO.	DESCRIPTION	PAKS CODE	GROUP NO.	PER CAR	PART NO.	PART NO.	PART NO.	PART NO.
					YF-7039	YF-7040	YF-7041	YF-7043
1	CARBURETOR		4.001	1	322 4858	322 4859	322 4860	535 4077
2	REPAIR KIT		4.001	1	812 4351	812 4351	812 4351	812 4351
3	GASKET SET		4.001	1	812 2898	812 2898	812 2898	812 2898
4	FLANGE GASKET		4.001	1	317 3228	317 3228	317 3228	317 3228
5	VALVE		4.001	1	448 8314	448 8314	448 8314	448 8314
6	VALVE		4.001	1	448 9432	448 9432	448 9432	448 9432
7	PLUG		4.001	1	320 3802	320 3802	320 3802	320 3802
8	PLUG		4.001	2	320 3805	320 3805	320 3805	320 3805
9	SHAFT		4.001	1	812 5682	812 5682	812 5682	812 5682
10	LEVER		4.001	1	812 0958	812 0958	812 0958	812 0958
11	FLOAT		4.001	1	812 3050	812 3050	812 3050	812 3050
12	PIN		4.001	1	812 4315	812 4315	812 4315	812 4315
13	NEEDLE ASSY.		4.001	1	448 8048	448 8048	448 8048	448 8048
14	SCREW		4.001	1	448 8036	448 8036	448 8036	448 8036
15	PLUG		4.001	1	320 3814	320 3814	320 3814	320 3814
16	SPRING		4.001	1	812 1248	812 1248	812 1248	812 1248
17	SPRING		4.001	1	320 5125	320 5125	320 5125	320 5125
18	SPRING		4.001	1	320 3844	320 3844	320 3844	320 3844
19	SPRING		4.001	1	812 5683	812 5683	812 5683	812 5683
20	RETAINER		4.001	1	320 3820	320 3820	320 3820	320 3820
21	RETAINER		4.001	3	320 3818	320 3818	320 3818	320 3818
22	RETAINER		4.001	1	812 1249	812 1249	812 1249	812 1249
23	ROD		4.001	1	812 3171	812 2892	812 3171	812 6258
24	CAP.		4.001	1	448 8054	448 8054	448 8054	448 8054
25	SCREW		4.001	3	320 6431	320 6431	320 6431	320 6431
26	SCREW		4.001	3	812 5858	812 5858	812 5858	812 5858
27	SCREW		4.001	4	320 6433	320 6433	320 6433	320 6433
28	SCREW		4.001	3	320 7738	320 7738	320 7738	320 7738
29	SCREW		4.001	AR	320 7745	320 7745	320 7745	320 7745
30	SCREW		4.001	1	812 1251	812 1251	812 1251	812 1251
31	SCREW		4.001	1	812 1252	812 1252	812 1252	812 1252
32	SCREW		4.001	1	812 1253	812 1253	812 1253	812 1253
33	SCREW		4.001	1	812 0222	812 0222	812 0222	812 0222
34	SCREW		4.001	1	812 0959	812 0959	812 0959	812 0959
35	NUT		4.001	1	320 6802	320 6802	320 6802
36	ARM (* 4-17)		4.001	1	812 2894	812 2894	812 2894	812 2894
	ARM (* 4-18)		4.001	1	812 6549	812 6549	812 6549	812 6549
37	BALL		4.001	1	812 0145	812 0145	812 0145	812 0145
38	LINK		4.001	1	812 5685	812 5685	812 5685	812 5685
39	JET		4.001	1	448 8445	448 8445	448 8445	448 8445
40	GASKET		4.001	1	448 5888	448 5888	448 5888	448 5888
42	PIN		4.001	1	320 7761	320 7761	320 7761	320 7761
43	COIL AND HOUSING		4.001	1	448 8063	812 5121	812 5121	448 8063
44	BRACKET		4.001	1	812 4350	812 4350	812 4350
45	CAM		4.001	1	812 1254	812 1254	812 1254	812 5857
46	PLATE		4.001	1	320 6442	320 6442	320 6442	320 6442
48	DASHPOT		4.001	1	812 0135	812 0135	812 0135
49	DIAPHRAGM		4.001	1	448 8066	448 8066	448 8066	448 8066
50	WEIGHT		4.001	1	812 0149	812 0149	812 0149	812 0149
51	SCREW		4.001	2	812 6130

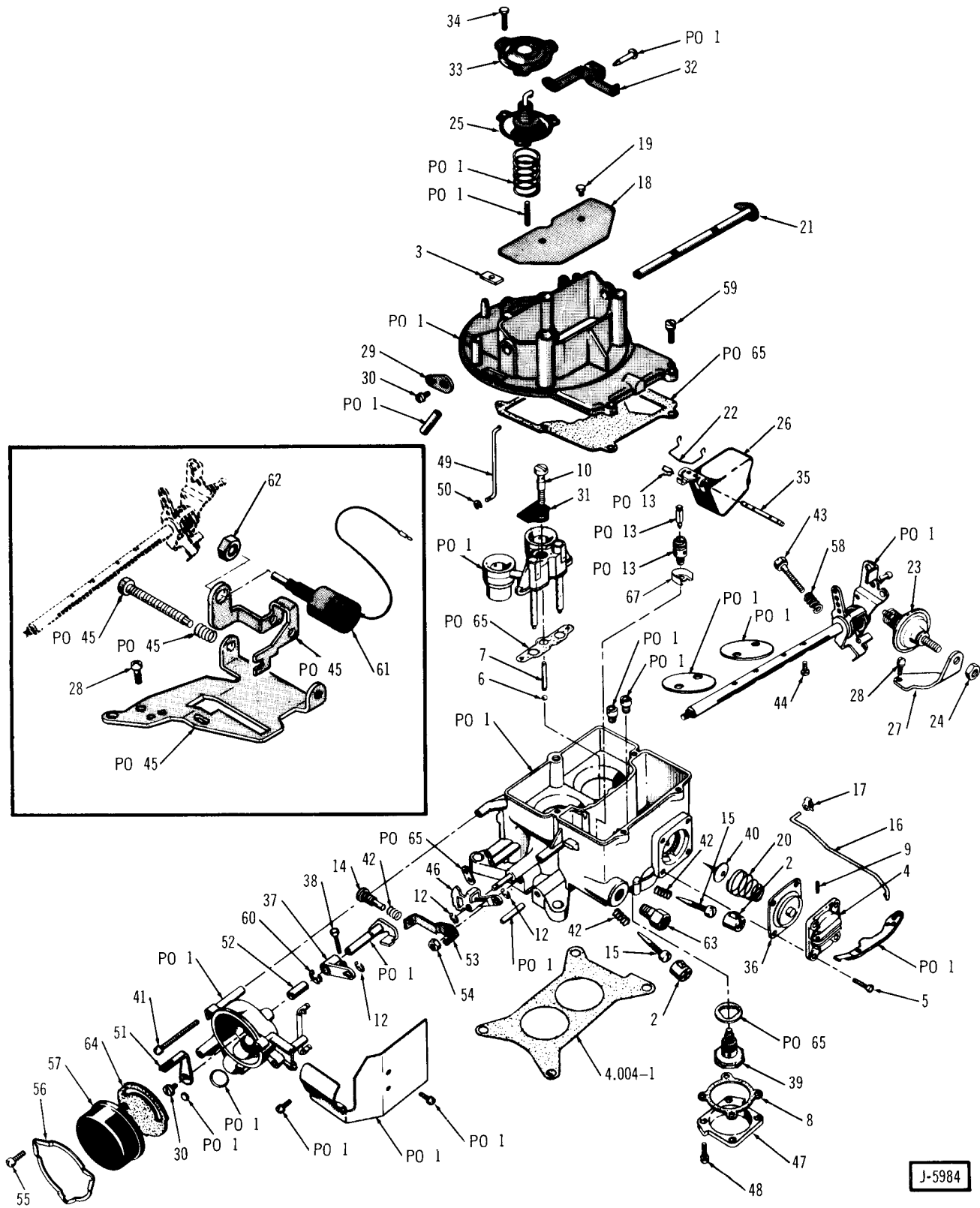
◀ SEE ILLUSTRATION FACING PAGE



SEE CHART FACING PAGE ►

KEY NO.	DESCRIPTION	PAKS CODE	GROUP NO.	PER CAR	PART NO.	PART NO.	PART NO.	PART NO.
					5THM4	5THA4	5THM4D	5THA4D
1	CARBURETOR		4.001	1	535 3844	535 4502	535 5514	535 5515
2	LIMITER.....		4.001	2	320 9879	320 9879	320 9879	320 9879
3	ROD.....		4.001	1	812 5997	812 5997	812 5997	812 5997
4	RING.....		4.001	1	448 8186	448 8186	448 8186	448 8186
5	VALVE.....		4.001	1	448 8187	448 8187	448 8187	448 8187
6	CUP.....		4.001	1	448 8388	448 8388	448 8388	448 8388
7	LEVER.....		4.001	1	812 6009	812 6009	812 6009	812 6009
8	SCREW.....		4.001	1	812 6010	812 6010	812 6010	812 6010
9	SPRING.....		4.001	1	812 6011	812 6011	812 6011	812 6011
10	SPRING.....		4.001	1	812 6012	812 6012	812 6012	812 6012
11	SHAFT.....		4.001	1	812 6013	812 6013	812 6013	812 6013
12	CAM.....		4.001	1	812 6014	812 6014	812 6014	812 6014
13	SCREW.....		4.001	1	448 8229	448 8229	448 8229	448 8229
14	SCREW.....		4.001	1	448 8239	448 8239	448 8239	448 8239
15	NEEDLE.....		4.001	2	448 8193	448 8193	448 8193	448 8193
16	SPRING.....		4.001	2	320 9917	320 9917	320 9917	320 9917
17	SCREW.....		4.001	4	448 8233	448 8233	448 8233	448 8233
18	VALVE.....		4.001	1	812 6030	812 6030	812 6030	812 6030
19	RETAINER.....		4.001	1	448 8226	448 8226	448 8226	448 8226
20	BALL.....		17.	1	G145637	G145637	G145637	G145637
21	BALL.....		4.001	1	812 6015	812 6015	812 6015	812 6015
22	SPRING.....		4.001	1	812 6016	812 6016	812 6016	812 6016
23	SOLENOID.....		4.001	1	812 6260	812 6260
24	ROD.....		4.001	2	812 6017	812 6017	812 6017	812 6017
25	SPRING.....		4.001	2	812 6018	812 6018	812 6018	812 6018
26	STOP.....		4.001	1	812 6019	812 6019	812 6019	812 6019
27	PIN.....		4.001	1	812 6020	812 6020	812 6020	812 6020
28	RETAINER.....		4.001	1	812 6021	812 6021	812 6021	812 6021
29	BUSHING.....		4.001	1	812 6022	812 6022	812 6022	812 6022
30	CLAMP.....		4.001	1	448 6603	448 6603	448 6603	448 6603
31	HOUSING.....		4.001	1	812 1426	812 1426	812 1426	812 1426
32	GASKET.....		4.001	1	812 1333	812 1333	812 1333	812 1333
33	SCREW.....		4.001	3	448 5447	448 5447	448 5447	448 5447
34	FLOAT.....		4.001	1	812 6023	812 6023	812 6023	812 6023
35	VALVE.....		4.001	1	812 6024	812 6024	812 6024	812 6024
36	BRACKET.....		4.001	1	448 8322	448 8322
37	BRACKET.....		4.001	1
38	NUT.....		17.	1	G107381	G107381	G107381	G107381
39	PLUG.....		4.001	1
40	NUT.....		4.001	1
41	CONNECTOR.....		4.001	1	448 8225	448 8225	448 8225	448 8225
42	SHAFT.....		4.001	1	812 5989	812 5989	812 5989	812 5989
43	LEVER.....		4.001	1	448 8218	448 8218	448 8218	448 8218
44	SCREW.....		4.001	1	448 8222	448 8222	448 8222	448 8222
45	PLATE.....		4.001	1	448 8196	448 8196	448 8196	448 8196
46	SCREW.....		4.001	2	320 9901	320 9901	320 9901	320 9901
47	SHAFT.....		4.001	1	812 5990	812 5990	812 5990	812 5990
48	VALVE.....		4.001	1	812 5994	812 5994	812 5994	812 5994
49	SCREW.....		4.001	4	448 8221	448 8221	448 8221	448 8221
50	ROD.....		4.001	1	448 8238	448 8238	448 8238	448 8238
51	RETAINER.....		4.001	5	448 8186	448 8186	448 8186	448 8186
52	NUT.....		4.001	1	812 6025	812 6025	812 6025	812 6025
53	RETAINER.....		4.001	1	812 6026	812 6026	812 6026	812 6026
54	PIN.....		4.001	1	812 6027	812 6027	812 6027	812 6027
55	SHAFT.....		4.001	1	448 8223	448 8223	448 8223	448 8223
56	FITTING.....		4.001	1	812 6028	812 6028	812 6028	812 6028
57	GASKET SET.....		4.001	1	812 5979	812 5979	812 5979	812 5979
58	REPAIR KIT.....		4.001	1	812 5980	812 5980	812 5980	812 5980
61	DIAPHRAGM.....		4.001	1	812 7372	812 7372

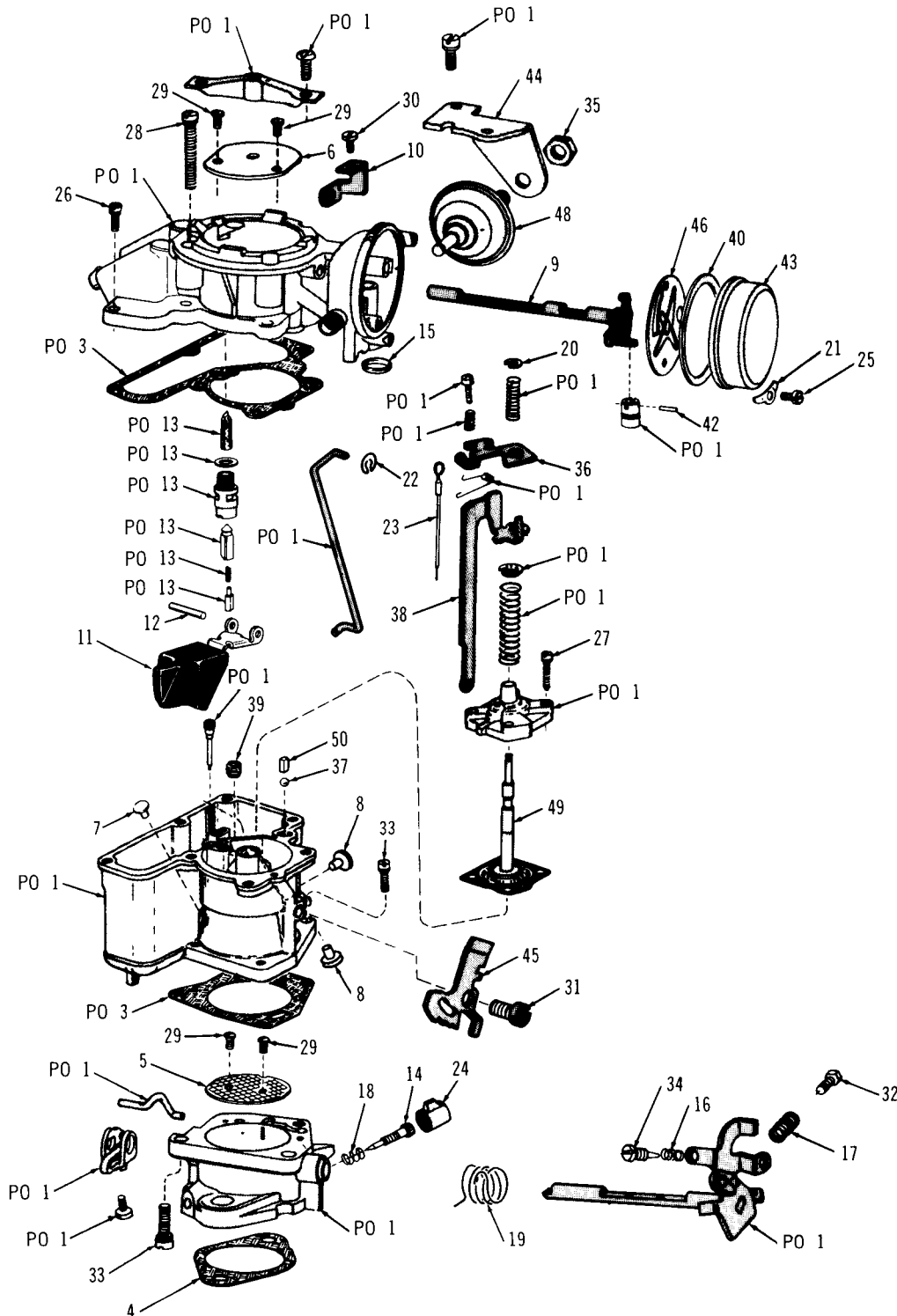
◀ SEE ILLUSTRATION FACING PAGE



SEE CHART FACING PAGE ►

KEY NO.	DESCRIPTION	PAKS CODE	GROUP NO.	PER CAR	PART 5RHM2	PART 5RHA2	PART 5DM2	PART 5DM2J
1	CARBURETOR		4.001	1	535 3843	535 4499	322 4923	535 5036
2	LIMITER.....		4.001	1	320 9879	320 9879	320 9879	320 9879
3	SEAL.....		4.001	1	320 9880	320 9880	320 9880	320 9880
4	COVER.....		4.001	1	812 5982	812 5982	812 5982	812 5982
5	SCREW.....		4.001	1	448 8169	448 8169	448 8169	448 8169
6	BALL.....		4.001	1	G145637	G145637	G145637	G145637
7	WEIGHT.....		4.001	1	812 3037	812 3037	812 3037	812 3037
8	GASKET.....		4.001	1	320 9885	320 9885	320 9885	320 9885
9	PIN.....		4.001	1	320 9891	320 9891	320 9891	320 9891
10	SCREW.....		4.001	1	320 9892	320 9892	320 9892	320 9892
11	ROD.....		4.001	1	320 9893	320 9893	320 9893	320 9893
12	WASHER.....		4.001	2	448 8171	448 8171	448 8171	448 8171
13	VALVE KIT.....	83	4.001	1	448 8172	448 8172	448 8172	448 8172
14	SCREW.....		4.001	1	812 1329	812 1329	812 1329	812 1329
15	NEEDLE.....		4.001	1	448 8173	448 8173	448 8173	448 8173
16	ROD.....		4.001	1	812 5981	812 5981	812 5981	812 5981
17	CLIP.....		4.001	1	812 4455	812 4455	812 4455	812 4455
18	PLATE.....		4.001	1	448 8175	448 8175	448 8175	448 8175
19	SCREW.....		4.001	2	320 9901	320 9901	320 9901	320 9901
20	SPRING.....		4.001	1	812 5040	812 5040	812 5040	812 5040
21	SHAFT.....		4.001	1	448 8176	448 8176	448 8176	448 8176
22	RETAINER.....		4.001	1	812 1330	812 1330	812 1330	812 1330
23	DASHPOT.....		4.001	1	320 9905
24	NUT.....		4.001	1	320 9906
25	DIAPHRAGM.....		4.001	1	448 8478	448 8478	448 8478	448 8478
26	FLOAT.....		4.001	1	448 8178	448 8178	448 8178	448 8178
27	BRACKET.....		4.001	1	448 8322	448 8322	448 8322
28	SCREW.....		4.001	1	448 5440	448 5440	448 5440	448 5440
29	LEVER.....		4.001	1	812 5984	812 5984	812 5984	812 5984
30	SCREW.....		4.001	1	448 5446	448 5446	448 5446	448 5446
31	PLATE.....		4.001	1	448 8180	448 8180	448 8180	448 8180
32	LEVER.....		4.001	1	812 0068	812 0068	812 0068	812 0068
33	COVER.....		4.001	1	448 8182	448 8182	448 8182	448 8182
34	SCREW.....		4.001	3	448 8183	448 8183	448 8183	448 8183
35	SHAFT.....		4.001	1	320 9910	320 9910	320 9910	320 9910
36	DIAPHRAGM.....		4.001	1	812 5985	812 5985	812 5985	812 5985
37	LEVER.....		4.001	1	812 5986	812 5986	812 5986	812 5986
38	SCREW.....		4.001	1	812 0069	812 0069	812 0069	812 0069
39	VALVE.....		4.001	1	812 5983	812 5983	812 5042	812 5042
40	VALVE.....		4.001	1	320 9916	320 9916	320 9916	320 9916
41	SCREW.....		4.001	3	448 5441	448 5441	448 5441	448 5441
42	SPRING.....		4.001	1	320 9917	320 9917	320 9917	320 9917
43	SCREW.....		4.001	1	448 5442	448 5442	448 5442	448 5442
44	SCREW.....		4.001	4	812 3040	812 3040	812 3040	812 3040
45	BRACKET.....		4.001	1	812 1166
46	CAM.....		4.001	1	320 9919	320 9919	320 9919	320 9919
47	COVER.....		4.001	1	812 5043	812 5043	812 5043	812 5043
48	SCREW.....		4.001	4	448 5445	448 5445	448 5445	448 5445
49	ROD.....		4.001	1	448 8246	448 8246	448 8246	448 8246
50	RING.....		4.001	1	320 9922	320 9922	320 9922	320 9922
51	LEVER.....		4.001	1	812 1420	812 1420	812 1420	812 1420
52	BUSHING.....		4.001	1	812 5987	812 5987	812 5987	812 5987
53	LEVER.....		4.001	1	812 1331	812 1331	812 1331	812 1331
54	NUT AND WASHER.....		4.001	1	G271169	G271169	G271169	G271169
55	SCREW.....		4.001	3	448 5447	448 5447	448 5447	448 5447
56	CLAMP.....		4.001	1	812 3150	812 3150	812 3150	812 3150
57	HOUSING.....		4.001	1	812 2959	812 2959	812 2959	812 2959
58	SPRING.....		4.001	1	320 9928	320 9928	320 9928	320 9928
59	SCREW.....		4.001	4	448 5444	448 5444	448 5444	448 5444
60	WASHER.....		4.001	2	320 9925	320 9925	320 9925	320 9925
61	SOLENOID.....		4.001	1	812 0480
62	NUT.....		4.001	1	G107381
63	FITTING.....		4.001	1	G137406	G137406	G137406	G137406
64	GASKET.....		4.001	1	812 1333	812 1333	812 1333	812 1333
65	GASKET SET.....		4.001	1	812 5977	812 5977	812 5977	812 5977
66	REPAIR KIT (Less Power Valve).....		4.001	1	812 5978	812 5978	812 5978	812 5978
67	SHIELD.....		4.001	1	812 5988	812 5988	812 5988	812 5988
68	SPRING.....		4.001	1	812 6310	812 6310	812 6310

◀ SEE ILLUSTRATION FACING PAGE



J-5982

SEE CHART FACING PAGE ►

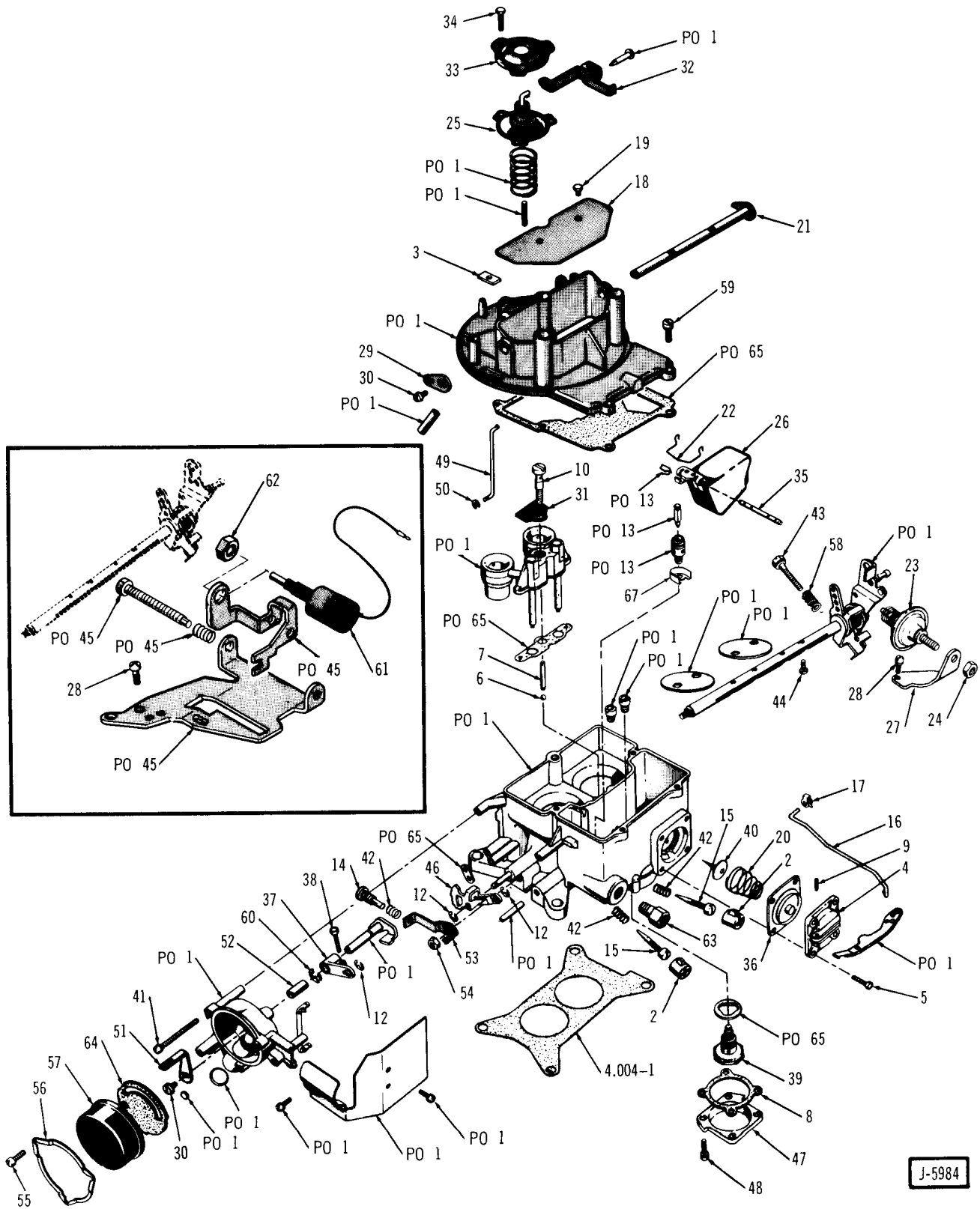
GROUP. 4

FUEL - EXHAUST - EMISSION

GROUP 4

KEY NO.	DESCRIPTION	PAKS CODE	GROUP NO.	PER CAR	PART NO.				
					YF-7083	YF-7084	YF-7085	YF-7088	YF-7109
1	CARBURETOR		4.001	1	322 7422	322 7425	322 7424	535 5238	535 5705
2	REPAIR KIT		4.001	1	812 4351	812 4351	812 4351	812 4351	812 4351
3	GASKET SET		4.001	1	812 2898	812 2898	812 2898	812 2898	812 2898
4	FLANGE GASKET		4.001	1	317 3228	317 3228	317 3228	317 3228	317 3228
5	VALVE		4.001	1	448 8314	448 8314	812 5681	448 8314	448 8314
6	VALVE		4.001	1	448 9432	448 9432	448 9432	448 9432	448 9432
7	PLUG		4.001	1	320 3802	320 3802	320 3802	320 3802	320 3802
8	PLUG		4.001	2	320 3805	320 3805	320 3805	320 3805	320 3805
9	SHAFT		4.001	1	812 5682	812 5682	812 5682	812 5682	812 5682
10	LEVER		4.001	1	812 0958	812 0958	812 0958	812 0958	812 0958
11	FLOAT		4.001	1	812 3050	812 3050	812 3050	812 3050	812 3050
12	PIN		4.001	1	812 4315	812 4315	812 4315	812 4315	812 4315
13	NEEDLE ASSY.		4.001	1	448 8048	448 8048	448 8048	448 8048	448 8048
14	SCREW		4.001	1	812 2355	812 2355	812 2355	448 8036	448 8036
15	PLUG		4.001	1	320 3814	320 3814	320 3814	320 3814	320 3814
16	SPRING		4.001	1	812 1248	812 1248	812 1248	812 1248	812 1248
17	SPRING		4.001	1	320 5125	320 5125	320 5125	320 5125	320 5125
18	SPRING		4.001	1	320 3844	320 3844	320 3844	320 3844	320 3844
19	SPRING		4.001	1	812 5683	812 5683	812 5683	812 5683	812 5683
20	RETAINER		4.001	1	320 3820	320 3820	320 3820	320 3820	320 3820
21	RETAINER		4.001	3	320 4326	812 6555	812 6555	320 4326	812 6555
22	RETAINER		4.001	1	812 1249	812 1249	812 1249	812 1249	812 1249
23	ROD		4.001	1	812 3171	812 6877	812 6877	812 6258	812 6258
24	CAP		4.001	1	448 8054	448 8054	448 8054	448 8054	448 8054
25	SCREW		4.001	3	320 6431	320 6452	320 6452	320 6452	320 6452
26	SCREW		4.001	3	812 5858	812 5858	812 5858	812 5858	812 5858
27	SCREW		4.001	4	320 6433	320 6433	320 6433	320 6433	320 6433
28	SCREW		4.001	3	320 7738	320 7738	320 7738	320 7738	320 7738
29	SCREW		4.001	2	320 7745	320 7745	320 7745	320 7745	320 7745
30	SCREW		4.001	1	812 1251	812 1251	812 1251	812 1251	812 1251
31	SCREW		4.001	1	812 1252	812 1252	812 1252	812 1252	812 1252
32	SCREW		4.001	1	812 1252	812 1252	812 1252	812 1252	812 1252
33	SCREW		4.001	1	812 1253	812 1253	812 1253	812 1253	812 1253
34	SCREW		4.001	1	812 0222	812 0222	812 0222	812 0222	812 0222
35	SCREW		4.001	1	812 0959	812 0959	812 0959	812 0959	812 0959
36	NUT		4.001	1	...	320 6802	320 6802
37	ARM (* 4-17)		4.001	1	812 2894	812 2894	812 2894	812 2894	812 2894
38	ARM (* 4-18)		4.001	1	812 6549	812 6549	812 6549	812 6549	812 6549
39	BALL		4.001	1	812 0145	812 0145	812 0145	812 0145	812 0145
40	LINK		4.001	1	812 5685	812 5685	812 5685	812 5685	812 5685
41	JET		4.001	1	448 8445	448 8445	448 8445	448 8445	448 8445
42	GASKET		4.001	1	448 5888	448 5888	448 5888	448 5888	448 5888
43	PIN		4.001	1	320 7761	320 7761	320 7761	320 7761	320 7761
44	COIL AND HOUSING		4.001	1	448 8063	812 6878	812 6556	448 8063	812 6878
45	BRACKET		4.001	1	...	812 4350	812 4350
46	CAM		4.001	1	812 5857	812 5857	812 4313	812 5857	812 5857
47	PLATE		4.001	1	320 6442	320 6442	320 6442	320 6442	320 6442
48	DASHPOT		4.001	1	...	812 0135	812 0135
49	DIAPHRAGM		4.001	1	448 8066	448 8066	448 8066	448 8066	448 8066
50	WEIGHT		4.001	1	812 0149	812 0149	812 0149	812 0149	812 0149
51	NUT		4.001	1	812 4310
52	NUT		4.001	1	812 4311
53	BRACKET		4.001	1	812 5116
54	SOLENOID		4.001	1	812 6260
55	SCREW		4.001	2	812 6130	812 6130	812 6130	812 6130	812 6130
56	SPACER		4.001	1	812 2352
57	CLIP		4.001	1	322 7959	322 7959	322 7959	322 7959	322 7959

◀ SEE ILLUSTRATION FACING PAGE

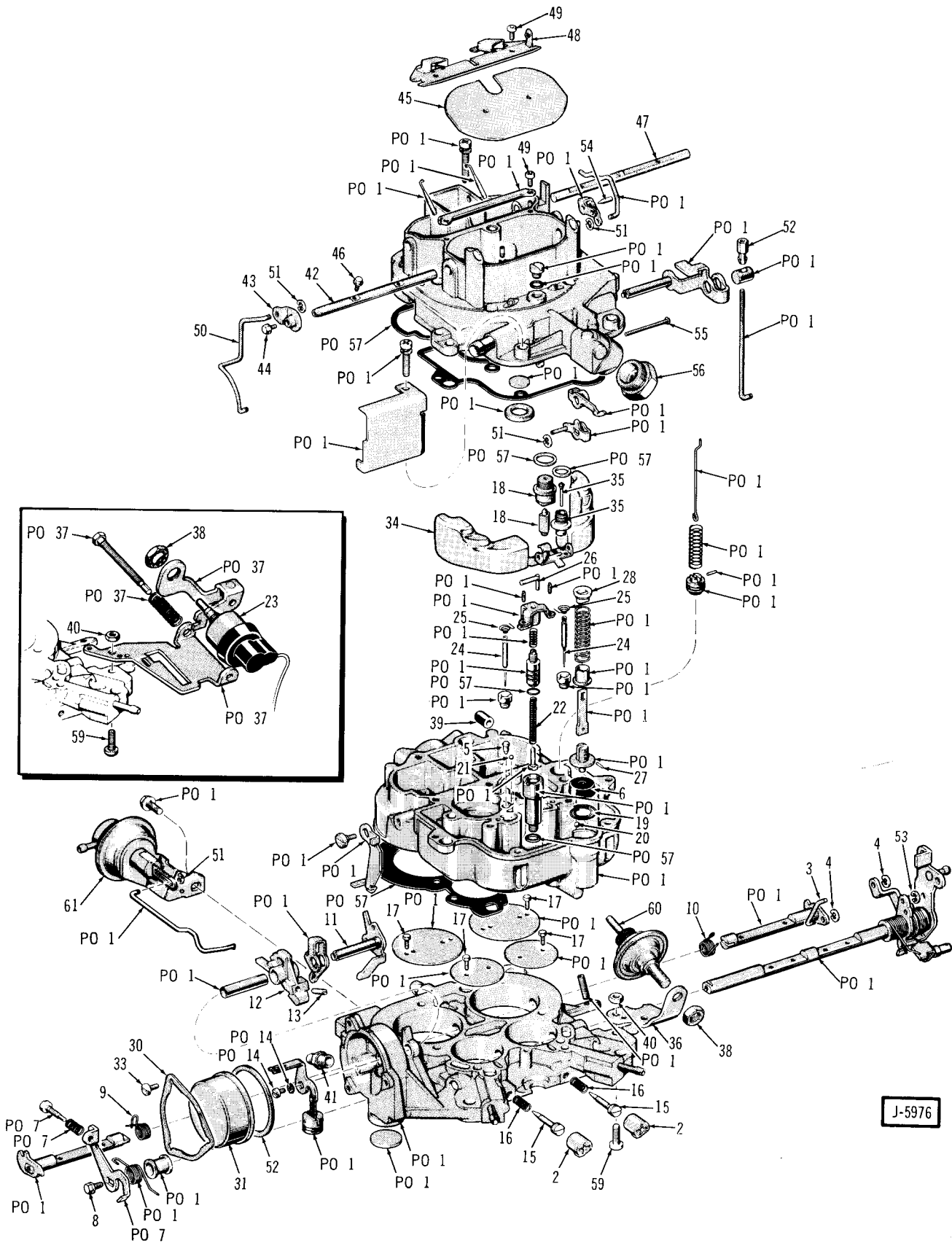


J-5984

SEE CHART FACING PAGE ►

KEY NO.	DESCRIPTION	PAKS CODE	GROUP NO.	PER CAR	PART NO.	PART NO.	PART NO.	PART NO.
					6DM2	6DA2J	6RHM2	6RHA2
1	CARBURETOR		4.001	1	322 7443	535 5513	535 5255	535 5256
2	LIMITER.....		4.001	1	320 9879	320 9879	320 9879	320 9879
3	SEAL.....		4.001	1	320 9880	320 9880	320 9880	320 9880
4	COVER.....		4.001	1	812 5982	812 5982	812 5982	812 5982
5	SCREW.....		4.001	1	448 8169	448 8169	448 8169	448 8169
6	BALL.....		17.	1	G145637	G145637	G145637	G145637
7	WEIGHT.....		4.001	1	812 3037	812 3037	812 3037	812 3037
8	GASKET.....		4.001	1	320 9885	320 9885	320 9885	320 9885
9	PIN.....		4.001	1	320 9891	320 9891	320 9891	320 9891
10	SCREW.....		4.001	1	320 9892	320 9892	320 9892	320 9892
11	ROD.....		4.001	1	320 9893	320 9893	320 9893	320 9893
12	WASHER.....		4.001	2	448 8171	448 8171	448 8171	448 8171
13	VALVE KIT.....		4.001	1	448 8172	448 8172	448 8172	448 8172
14	SCREW.....		4.001	1	812 1329	812 1329	812 1329	812 1329
15	NEEDLE.....		4.001	1	448 8173	448 8173	448 8173	448 8173
16	ROD.....		4.001	1	812 5981	812 5981	812 5981	812 5981
17	CLIP.....		4.001	1	812 4455	812 4455	812 4455	812 4455
18	PLATE.....		4.001	1	448 8175	448 8175	448 8175	448 8175
19	SCREW.....		4.001	2	320 9901	320 9901	320 9901	320 9901
20	SPRING.....		4.001	1	812 5040	812 5040	812 5040	812 5040
21	SHAFT.....		4.001	1	448 8176	448 8176	448 8176	448 8176
22	RETAINER.....		4.001	1	812 1330	812 1330	812 1330	812 1330
23	DASHPOT.....		4.001	1	320 9905
24	NUT.....		4.001	1	320 9906
25	DIAPHRAGM.....		4.001	1	448 8478	448 8478	448 8478	448 8478
26	FLOAT.....		4.001	1	448 8178	448 8178	448 8178	448 8178
27	BRACKET.....		4.001	1	448 8322	448 8322
28	SCREW.....		4.001	1	448 5440	448 5440	448 5440	448 5440
29	LEVER.....		4.001	1	812 5984	812 5984	812 5984	812 5984
30	SCREW.....		4.001	1	448 5446	448 5446	812 5446	448 5446
31	PLATE.....		4.001	1	448 8180	448 8180	448 8180	448 8180
32	LEVER.....		4.001	1	812 0068	812 0068	812 0068	812 0068
33	COVER.....		4.001	1	448 8182	448 8182	448 8182	448 8182
34	SCREW.....		4.001	3	448 8183	448 8183	448 8183	448 8183
35	SHAFT.....		4.001	1	320 9910	320 9910	320 9910	320 9910
36	DIAPHRAGM.....		4.001	1	812 5985	812 5985	812 5985	812 5985
37	LEVER.....		4.001	1	812 5986	812 5986	812 5986	812 5986
38	SCREW.....		4.001	1	812 0069	812 0069	812 0069	812 0069
39	VALVE.....		4.001	1	812 5042	812 5041	812 7252	812 7252
40	VALVE.....		4.001	1	320 9916	320 9916	320 9916	320 9916
41	SCREW.....		4.001	3	448 5441	448 5441	448 5441	448 5441
42	SPRING.....		4.001	1	320 9917	320 9917	320 9917	320 9917
43	SCREW.....		4.001	1	448 5442	448 5442	448 5442	448 5442
44	SCREW.....		4.001	4	812 3040	812 3040	812 3040	812 3040
45	BRACKET.....		4.001	1	812 1166	812 1166
46	CAM.....		4.001	1	320 9919	320 9919	320 9919	320 9919
47	ROD.....		4.001	1	812 5043	812 5043	812 5043	812 5043
48	SCREW.....		4.001	4	448 5445	448 5445	448 5445	448 5445
49	ROD.....		4.001	1	448 8246	448 8246	448 8246	448 8246
50	RING.....		4.001	1	320 9922	320 9922	320 9922	320 9922
51	LEVER.....		4.001	1	812 1420	812 1420	812 1420	812 1420
52	BUSHING.....		4.001	1	812 5987	812 5987	812 5987	812 5987
53	LEVER.....		4.001	1	812 1331	812 1331	812 1331	812 1331
54	NUT AND WASHER.....		17.	1	G271169	G271169	G271169	G271169
55	SCREW.....		4.001	3	448 5447	448 5447	448 5447	448 5447
56	CLAMP.....		4.001	1	812 3150	812 3150	812 3150	812 3150
57	HOUSING.....		4.001	1	812 2959	812 2959	812 2959	812 2959
58	SPRING.....		4.001	1	320 9928	320 9928	320 9928	320 9928
59	SCREW.....		4.001	4	448 5444	448 5444	448 5444	448 5444
60	WASHER.....		4.001	2	320 9925	320 9925	320 9925	320 9925
61	SOLENOID.....		4.001	1	812 0480	812 0480
62	NUT.....		17.	1	G107381	G107381
63	FITTING.....		17.	1	G137406	G137406	G137406	G137406
64	GASKET.....		4.001	1	812 1333	812 1333	812 1333	812 1333
65	GASKET SET.....		4.001	1	812 5977	812 5977	812 5977	812 5977
66	REPAIR KIT (Less Power Valve).....		4.001	1	812 5978	812 5978	812 5978	812 5978
67	SHIELD.....		4.001	1	812 5988	812 5988	812 5988	812 5988

◀ SEE ILLUSTRATION FACING PAGE



J-5976

SEE CHART FACING PAGE ►

KEY	DESCRIPTION	PAKS CODE	GROUP NO.	PER CAR	PART NO. 6THM4	PART NO. 6THA4	PART NO. 6THA4C
1	CARBURETOR		4.001	1	535 5257	535 5258	535 5582
2	LIMITER.....		4.001	2	320 9879	320 9879	320 9879
3	ROD.....		4.001	1	812 5997	812 5997	812 5997
4	RING		4.001	2	448 8186	448 8186	448 8186
5	VALVE		4.001	1	448 8187	448 8187	448 8187
6	CUP.....		4.001	1	448 8388	448 8388	448 8388
7	LEVER		4.001	1	812 6009	812 6009	812 6009
8	SCREW		4.001	1	812 6010	812 6010	812 6010
9	SPRING.....		4.001	1	812 6011	812 6011	812 6011
10	SPRING.....		4.001	1	812 6012	812 6012	812 6012
11	SHAFT		4.001	1	812 6013	812 6013	812 6013
12	CAM.....		4.001	1	812 6014	812 6014	812 6014
13	SCREW		4.001	1	448 8229	448 8229	448 8229
14	SCREW		4.001	1	448 8239	448 8239	448 8239
15	NEEDLE.....		4.001	2	448 8193	448 8193	448 8193
16	SPRING.....		4.001	2	320 9917	320 9917	320 9917
17	SCREW		4.001	4	448 8233	448 8233	448 8233
18	VALVE		4.001	1	812 6030	812 6030	812 6030
19	RETAINER.....		4.001	1	448 8226	448 8226	448 8226
20	BALL		17.	1	G145637	G145637	G145637
21	BALL		4.001	1	812 6015	812 6015	812 6015
22	SPRING.....		4.001	1	812 6016	812 6016	812 6016
23	SOLENOID.....		4.001	1	812 6260	812 6260
24	ROD.....		4.001	2	812 6017	812 6017	812 6017
25	SPRING		4.001	2	812 6018	812 6018	812 6018
26	STOP.....		4.001	1	812 6019	812 6019	812 6019
27	PIN		4.001	1	812 6020	812 6020	812 6020
28	RETAINER.....		4.001	1	812 6021	812 6021	812 6021
29	BUSHING		4.001	1	812 6022	812 6022	812 6022
30	CLAMP		4.001	1	448 6603	448 6603	448 6603
31	HOUSING		4.001	1	812 1426	812 1426	812 1426
32	GASKET		4.001	1	812 1333	812 1333	812 1333
33	SCREW		4.001	3	448 5447	448 5447	448 5447
34	FLOAT		4.001	1	812 6023	812 6023	812 6023
35	VALVE		4.001	1	812 6024	812 6024	812 6024
36	BRACKET		4.001	1	448 8322
37	BRACKET		4.001	1
38	NUT.....		17.	1	G107381	G107381	G107381
39	PLUG		4.001	1
40	NUT.....		4.001	1
41	CONNECTOR.....		4.001	1	448 8225	448 8225	448 8225
42	SHAFT		4.001	1	812 5989	812 5989	812 5989
43	LEVER		4.001	1	448 8218	448 8218	448 8218
44	SCREW		4.001	1	448 8222	448 8222	448 8222
45	PLATE		4.001	1	448 8196	448 8196	448 8196
46	SCREW		4.001	2	320 9901	320 9901	320 9901
47	SHAFT		4.001	1	812 5990	812 5990	812 5990
48	VALVE		4.001	1	812 5994	812 5994	812 5994
49	SCREW		4.001	4	448 8221	448 8221	448 8221
50	ROD.....		4.001	1	448 8238	448 8238	448 8238
51	RETAINER.....		4.001	5	448 8186	448 8186	448 8186
52	NUT.....		4.001	1	812 6025	812 6025	812 6025
53	RETAINER.....		4.001	1	812 6026	812 6026	812 6026
54	PIN		4.001	1	812 6027	812 6027	812 6027
55	SHAFT		4.001	1	448 8223	448 8223	448 8223
56	FITTING.....		4.001	1	812 6028	812 6028	812 6028
57	GASKET SET		4.001	1	812 5979	812 5979	812 5979
58	REPAIR KIT		4.001	1	812 5980	812 5980	812 5980
61	DIAPHRAGM		4.001	1	812 7372	812 7372	812 7372

◀ SEE ILLUSTRATION FACING PAGE

FUEL - EXHAUST - EMISSION

4.004

GROUP NO. — DESCRIPTION — YEAR and MODEL	PAKS CODE	PRIMARY GROUP NO.	PER CAR	PART NO.	CODE
4.001-1 CARBURETOR (For Components Refer To Chart Index, Gr. 4 - C 1)					
LDT (Six)					
74 (YF-6423).....			1	321 9471	
74 (YF-6431).....			1	321 9502	
74 (YF-6432).....			1	321 9503	
74 (YF-6511).....			1	322 0505	
74 (YF-7001).....			1	322 3868	
75 (YF-7039).....			1	322 4858	
75 (YF-7040).....			1	322 4859	
75 (YF-7041).....			1	322 4860	
75 (YF-7043).....			1	535 4077	
76 (YF-7083).....			1	322 7422	
76 (YF-7084).....			1	322 7425	
76 (YF-7085).....			1	322 7424	
76 (YF-7088).....			1	535 5238	
76 (YF-7109).....			1	535 5705	
WDT					
74 (4DM2).....			1	535 2310	
74 (4DM2).....			1	322 2317	
74 (4RA2).....			1	322 2320	
74 (4RHD2)			1	535 2308	
75 (5DM2).....			1	322 4923	
75 (5DM2).....			1	535 5036	
75 (5RHM2).....			1	535 3843	
75 (6RHA2).....			1	535 4499	
76 (6DA2J).....			1	535 5513	
76 (6DM2).....			1	322 7443	
76 (6RHA2).....			1	535 5256	
76 (6RHM2).....			1	535 5255	
W4B					
74 (4TA4).....			1	322 2323	
74 (4TH4).....			1	535 2309	
75 (5THA4).....			1	535 4502	
75 (5THM4).....			1	535 3844	
76 (6THC4).....			1	535 5514	
76 (6THA4).....			1	535 5515	
76 (6THA4).....			1	535 5258	
76 (6THA4C).....			1	535 5582	
76 (6THM4).....			1	535 5257	
4.001-2 ATTACHING PARTS, Carburetor To Manifold Or Insulator					
STUD..... 74/ SIX.....		4.178	2	400 4110	
STUD..... 74/ V8.....		17.718	4	G192423	
NUT, Jam..... 74/75 SIX.....		17.410	2	G124925	
NUT, Jam..... 76 SIX.....		17.410	2	G114494	
NUT, Hexagon..... 74/ V8.....			4	400 3825	
4.001-3 CAP, Carburetor Vacuum Nipple					
74/.....		4.004	1	321 0520	
4.001-4 CLAMP, Carburetor Vacuum Nipple Cap					
74/.....			1	944 681	
4.004-1 GASKET, Carburetor					
74/ SIX.....			2	321 8867	
74/ (Insulator To Manifold) V8 (WDT).....			1	319 1886	
74/ (Carburetor To Insulator) V8 (WDT).....			1	322 2253	
74 (Carburetor To Insulator) V8 (W4B).....			1	322 2255	
75/ (Carburetor To Insulator) V8 (W4B).....			1	322 4376	
74 (Insulator To Manifold) V8 (W4B).....			1	321 8869	
75/ (Insulator To Manifold) V8 (W4B).....			1	322 4375	

4.004 FUEL - EXHAUST - EMISSION

4.004-2 INSULATOR, Carburetor					
74	SIX	1	321 8854
75/	SIX	1	322 5449
74/	V8 (WDT)	1	322 2254
74	V8 (W4B)	1	322 2256
75/	V8 (W4B)	1	322 4377
4.005-1 MODULATOR, Throttle					
74	10-20-45 (WMT-WDT-WHDC-Calif.)	1	535 1488
75/	10-25-40 (V8-WMT)	1	535 1488
74	46	1	535 1488
74	80 (304-Calif.)	1	535 1488
4.005-1a EXTENSION, Modulator (To Anchor Adapter)					
75/	10-25-40 (V8-WMT)	1	535 4579
4.005-1b ADAPTER, Modulator (To Carburetor Bracket)					
75/	10-25-40 (V8-WMT)	1	535 4580
4.005-2 ATTACHING PARTS, Modulator To Bracket					
SCREW, Machine	75/	10-25-40 (V8-WMT)	17.629	1 G274683
NUT, Jam	74	10-20-45 (WMT-WDT-WHDC-Calif.)	17.410	1 G124920
NUT, Jam	75/	10-25-40 (V8-WMT)	17.410	1 G124920
NUT, Jam	74	46	17.410	1 G124920
NUT, Jam	74	80 (304-Calif.)	17.410	1 G124920
4.005-3 HOSE, Modulator To Vacuum Control Valve (Bulk-Order In Feet)					
74	10-20-45 (WMT-WDT-WHDC-Calif.)	4.701	AR	320 3440
75	10-25-40 (V8-WMT)	4.701	AR	812 5812
74	46	4.701	AR	320 3440
74	80 (304-Calif.)	4.701	AR	320 3440
4.006-1 VALVE, Modulator Vacuum Control					
74	10-20-45 (WMT-WDT-WHDC-Calif.)	1	535 1487
75	10-25-40 (V8-WMT)	1	535 1487
76	10-20-40 (V8)	1	535 5699
74	46	1	535 1487
74	80 (304-Calif.)	1	535 1487
4.006-2 ATTACHING PARTS, Valve To Coil Mounting Bracket					
SCREW, Hexagon	74	10-20-45 (WMT-WDT-WHDC-Calif.)	17.671	1 G271444
SCREW, Hexagon	74	46	17.671	1 G271444
SCREW, Hexagon	74	80 (304-Calif.)	17.671	1 G271444
4.006-3 HOSE, Valve To Tee (Bulk-Order In Feet)					
74	10-20-45 (WMT-WDT-WHDC-Calif.)	4.701	AR	320 3440
75	10-25-40 (V8-WMT)	4.701	AR	812 5812
74	46	4.701	AR	320 3440
74	80 (304-Calif.)	4.701	AR	320 3440
4.006-4 TEE, Modulator Valve Hose					
74	10-20-45 (WMT-WDT-WHDC-Calif.)	3.050	1	321 0891
74	46	3.050	1	321 0891
74	80 (304-Calif.)	3.050	1	321 0891
4.006-5 HOSE, Tee To Vacuum Fitting (Bulk-Order In Feet)					
74	10-20-45 (WMT-WDT-WHDC-Calif.)	AR	320 3440
74	46	AR	320 3440
74	80 (304-Calif.)	AR	320 3440
4.015-1 TUBE, Air Cleaner Duct Or Elbow To Adapter Or Exhaust Manifold Shroud					
74/	SIX	1	321 6423
74/	V8	1	321 1358
4.015-2 ATTACHING PARTS, Duct To Air Cleaner And Manifold Shroud					
CLAMP	74/	SIX	17.108	2 320 3079

FUEL - EXHAUST - EMISSION

4.040

4.015-3	SHROUD, Exhaust Manifold Heat				
74	SIX (WEEP) ... (3-3/8" Long)	1	322	4171	
74	SIX (LEEP) ... (3-3/8" Long)	1	321	9312	
75/	SIX ... (3-3/8" Long)	1	322	4171	
74/	SIX ... (9-5/8" Long)	1	322	4173	
4.020-1	TUBE, Carburetor Choke Heater (To Carburetor)				
74/75	SIX	1	322	2619	
76	SIX	1	322	6644	
74/	V8 (WMT-WDT)	1	322	2247	
74/	V8 (WHT-WDT)	1	322	2248	
74	V8 (W4ST-W4B)	1	322	2250	
74	V8 (WAT-W4B)	1	322	2251	
75/	V8 (W4B)	1	322	4687	
4.020-2	SLEEVE, Carburetor Choke Heater Tube				
74/	17.030	1	G114628	
4.020-3	NUT, Carburetor Choke Heater Tube				
74/	17.448	1	G114627	
4.020-4	TUBE, Carburetor Choke Heater (In Manifold)				
74/	SIX	1	322	3024	
74	V8	1	322	0181	
75/	V8 (WDT)	1	322	0181	
75/	V8 (W4B)	1	322	4688	
4.020-5	GASKET, Carburetor Choke Heater Tube (To Manifold)				
74/	V8	1	321	8215	
4.020-6	ATTACHING PARTS, Tube To Manifold				
	BOLT, Hexagon 74/ V8	1.151	2	316 2258	
4.020-7	TUBE, Carburetor Clean Air				
74	SIX	1	941	388	
75	SIX ... (1/4" O.D.)	1	322	4917	
75/	SIX ... (5/16" O.D.)	1	535	5883	
74/	V8 (WDT)	1	322	2249	
74	V8 (W4B)	1	322	2252	
75/	V8 (W4B)	1	322	7397	
4.020-8	HOSE, Carburetor Clean Air				
74	SIX (Bulk-Order In Feet)	4.144	AR	535 1951	
75/	(Bulk-Order In Feet)	22.050	AR	812 5813	
74	V8	16.240	1	319 3524	
4.020-9	ATTACHING PARTS, Clean Air Tube Clip To Bracket				
	CLIP, Closed 74/	17.134	1	G120522	
	SCREW, Machine 74/	17.598	1	G191985	
	NUT, Lock 74/	17.412	1	G271172	
4.020-10	BRACKET, Carburetor Choke Heater Tube To Clean Air Tube				
75/	SIX	1	318	1457	
4.040-1	PEDAL, Accelerator				
74/75	10-20-40 (RHD-Six)	1	940	043	
74/	LHD	1	319	3332	
4.040-2	STUD, Accelerator Pedal Pivot Ball				
74/75	10-20-40 (RHD-Six)	1	940	040	
4.040-4	ATTACHING PARTS, Ball Stud To Floor Pan				
	WASHER, Lock 74/75 10-20-40 (RHD-Six)	17.820	2	G120382	
4.040-5	OVERLAY, Accelerator Pedal Trim				
74/	LHD	1	319	3912	
74/75	10-20-40 (RHD-Six)	1	940	289	

4.040 FUEL - EXHAUST - EMISSION

4.040-5a	ATTACHING PARTS, Trim Plate To Pedal SCREW, Machine..... 74/75 10-20-40 (RHD-Six)	17.592	2	G157138
4.040-6	ATTACHING PARTS, Pedal To Bellcrank PIN, Clevis..... 74/..... PIN, Cotter..... 74/..... WASHER, Plain..... 74/..... 17.460 17.814	1 1 1	319 3368 G112726 G147579
4.040-7	SPRING, Accelerator Pedal To Bellcrank 74/ LHD..... 74 RHD..... 75 80 (RHD-Six)	1 1 1	319 3369 535 1251 535 1251
4.045-1	ROD, Accelerator Pedal 74/75 10-20-40 (RHD-Six)	1	940 916
	76 80-90 (LHD)...(Incl. Pedal)	1	535 3176
	76 80-90 (RHD)...(Incl. Pedal).....	1	535 4753
4.045-2	ATTACHING PARTS, Rod To Pedal And/Or Bellcrank NUT, Hexagon..... 74/75 10-20-40 (RHD-Six)	17.412	1	G271169
4.050-1	BELLCRANK, Accelerator Pedal Rod 74/ 10-20-40 (LHD)..... 74/75 10-20-40 (RHD-Six)	1 1	535 1970 932 118
	74/75 80 (LHD).....	1	999 859
	74/75 80 (RHD-Six)	4.055	1	535 0752
4.050-2	ATTACHING PARTS, Bellcrank To Bracket PIN, Cotter..... 74/75 10-20-40 (RHD-Six)	17.460	1	G137159
	WASHER, Plain..... 74/75 10-20-40 (RHD-Six)	17.814	1	G120394
4.050-3	BRACKET, Accelerator Pedal Rod Bellcrank 74 10-20-40 (RHD-Six)	1	933 153
	75 10-20-40 (RHD-Six)	1	535 3406
4.050-4	ATTACHING PARTS, Bracket To Dash SCREW, Hexagon..... 74/75 (5/8" Long)..... SCREW, Machine..... 74 SIX (RHD) 17.629	AR 3	400 4040 G272475
	SCREW, Machine..... 75 10-20-40 (RHD-Six)	17.629	3	G272475
	SCREW, Hexagon..... 76 10-20-40.....	3	400 4040
	SCREW, Hexagon..... 76 80-90.....	2	400 4077
	BOLT, Hexagon..... 76 (1/2" Long).....	17.038	2	G180016
	WASHER, Plain..... 74 RHD.....	17.814	3	G120385
	WASHER, Plain..... 75 80 (RHD-Six)	17.814	3	G120385
	WASHER, Lock..... 76	17.820	2	G120380
4.050-5	CLIP, Anchor Accelerator Spring 74/75 10-20-40 (RHD-Six)	1	933 459
	74 46 (401-W4ST)(401-WHT).....	1	535 2897
	74/ SIX.....	1	535 2897
4.050-6	SPRING, Accelerator Retracting (At Bellcrank) 74 80 (RHD-Six)	1	932 806
	74 80 (V8)	4.080	1	535 3067
4.050-7	BUSHING, Bellcrank To Bracket 74/75 10-20-40 (RHD-Six)	2	931 883
4.051-1	ACCELERATOR KIT 74 80 (Off The Road Usage)	214	1	535 4006
4.057-1	CABLE, Accelerator 74/ 10-20-40 (LHD-Six)	1	535 1420
	74/75 10-20-40 (RHD-Six)	4.051	1	535 1287
	74/75 80 (LHD-Six)	1	999 923
	76 80-90 (LHD-Six)	1	535 5578

FUEL - EXHAUST - EMISSION

4.080

	74/	10-20-40 (V8)	4.051	1	535 1419
	74/75	80 (V8)		1	999 893
	74/75	80 (RHD-Six)		1	535 0750
	76	80-90 (LHD-V8)		1	535 5977
	76	80-90 (RHD)		1	535 4756
4.057-2	ATTACHING PARTS, Cable To Dash Panel				
	CLIP	74/75 80		1	987 969
	CLIP	74/75 SIX (RHD)		1	932 000
	WASHER, Plain	74/75 SIX (RHD)	17.814	1	G120395
4.057-3	ATTACHING PARTS, Cable To Bellcrank				
	PIN, Cotter	74/75 10-20-40 (RHD-Six)	17.460	1	G137141
4.057-4	ATTACHING PARTS, Cable To Bracket				
	WASHER	74/ (Square Hole)		AR	535 0628
4.057-6	BRACKET, Accelerator Control Cable				
	74	SIX		1	321 1117
	75	SIX (Except Calif.)		1	321 1117
	75	SIX (Calif.)		1	535 5906
	76	SIX		1	535 5917
	74/75	80 (V8)		1	535 2934
	74	V8 (W4T)		1	322 2702
	75	V8 (W4T)		1	322 5796
	74	V8 (W4B)	4.051	1	322 2703
	75	V8 (W4B)		1	322 5795
4.057-7	ATTACHING PARTS, Bracket To Manifold				
	BOLT, Hexagon	74/ SIX	17.626	AR	G456938
4.057-8	ATTACHING PARTS, Bracket To Cylinder Head				
	SCREW, Machine	74/ V8	17.626	2	400 0987
4.070-3	STUD, Carburetor Control Shaft Ball				
	74/	10-20-40 (Six)		1	940 915
	74/	80-90		1	940 915
4.070-4	ATTACHING PARTS, Stud To Carburetor Lever Or Bracket				
	WASHER, Plain	74/75 80 (V8)	17.814	1	G120391
	NUT, Hexagon	74/ SIX	17.412	1	G271169
	NUT, Hexagon	74/75 80 (V8)	17.412	1	G271169
4.070-5	BRACKET, Carburetor Lever To Accelerator Cable				
	74/	SIX		1	535 1260
4.070-6	ATTACHING PARTS, Bracket To Carburetor Lever				
	SCREW, Pan Head	74/ SIX	17.610	2	G191940
	NUT, Hexagon	74/ SIX	17.412	2	G271482
4.080-1	SPRING, Carburetor Pull Back				
	74/	SIX		2	317 4455
	74/75	10-20-40 (V8)		1	535 3069
	74/75	80 (V8)		2	535 3067
	76	V8		2	535 3069
4.080-2	BRACKET, Carburetor Pull Back Spring				
	74/	(To Exhaust Gas Recirculating Mounting Bolt) SIX		1	535 1700
	74	(To Exhaust Manifold Mounting Bolt) SIX		1	321 7345
	75	(To Exhaust Manifold Mounting Bolt) SIX (Except Calif.)		1	319 6282
	75	(To Exhaust Manifold Mounting Bolt) SIX (Calif.)		1	535 5907
	76	(To Exhaust Manifold Mounting Bolt) SIX		1	535 5918
	76	(To Exhaust Manifold Mounting Bolt) SIX...(4 Holes)		1	319 6282
	76	(To Exhaust Manifold Mounting Bolt) SIX...(5 Holes)		1	535 5918
4.080-4	ATTACHING PARTS, Return Spring To Throttle Lever				
	PIN, Cotter	74/ V8	17.460	1	G435864
	WASHER, Plain	74/ V8	17.814	2	G120392

4.080

FUEL - EXHAUST - EMISSION

4.080-5	ADAPTER, Pull Back Spring Anchor				
	74 10 (V8)		1	535	2990
	75 V8		1	535	2990
4.080-6	ATTACHING PARTS, Anchor To Adapter				
	SCREW, Pan Head..... 74 10 (V8)	17.598	1	G159582	
	SCREW, Pan Head..... 75 V8... (3/8" Long).....	17.598	1	G159582	
	SCREW, Pan Head..... 75 V8... (1/2" Long).....	17.	1	G159592	
	NUT, Lock..... 74 10 (V8)	17.412	1	G271163	
	NUT, Lock..... 75 V8	17.412	1	G271163	
4.088-1	CLEANER, Carburetor Air				
	DRY TYPE				
	74 SIX.....		1	535	2822
	75 SIX.....	81	1	322	4388
	74 V8		1	535	1604
	75 V8		1	322	4835
4.088-2	GASKET, Carburetor Air Cleaner Or Adapter To Carburetor				
	74 SIX.....		1	317	2428
	74 V8		1	319	1884
4.088-5	ELEMENT, Carburetor Air Cleaner				
	74 SIX.....		1	899	1386
	74 V8		1	899	2661
4.088-6	POLY WRAP, Carburetor Air Cleaner Element				
	74 SIX.....		1	812	1270
	74 V8		1	812	1269
4.088-7	COVER, Carburetor Air Cleaner				
	74 V8		1	812	0004
4.088-10	STUD, Carburetor Air Cleaner Retaining				
	74 V8 (WDT)		1	321	1311
	75 V8 (WDT)		1	321	0016
	74 V8 (W4B).....		1	321	1310
	75 V8 (W4B).....		1	322	5658
4.088-11	NUT, Carburetor Air Cleaner Retainer				
	74 SIX.....		1	319	4758
	75 SIX.....		1	322	5644
	74 V8		1	315	1735
4.088-12	SENSOR KIT, Carburetor Air Cleaner Temperature				
	74 SIX.....		1	812	4454
	74 V8		1	812	1111
4.088-13	MOTOR, Carburetor Air Cleaner Air Temperature Control Vacuum				
	74 V8		1	812	1115
4.088-14	HOSE, Air Cleaner To Sensor And/Or Intake Manifold (Bulk-Order In Feet)				
	74 V8	4.701	AR	320	3440
4.092-1	DUCT, Cold Air Induction				
	75 V8		1	535	4498
4.092-2	ADAPTER, Duct To Air Cleaner				
	75 V8		2	535	4451
4.092-3	ATTACHING PARTS, Duct To Air Cleaner				
	SCREW, Plastite..... 75 V8		2	400	4940
4.110-1	PUMP, Fuel				
	74 SIX... (Less Bolts).....	(Use 322 5283)	1	322	3045
	74 SIX... (Incl. Bolts).....	(Ref. Pr. List)	1	812	4459
	75 SIX.....		1	322	5283
	74 75 V8		1	812	4460
	76 V8		1	322	7884

FUEL - EXHAUST - EMISSION

4.130

4.110-2	ATTACHING PARTS, Pump To Block Or Front Cover				
	BOLT, Hexagon..... 74/ V8.....	17.038	2	G180125	
	BOLT, Hexagon..... 74/ SIX.....	17.038	2	G180079	
	CLIP, Closed..... 76 V8.....	17.134	1	G128302	
4.110-3	FILTER, Gasoline (In-Line)				
	74.....	169	1	899 2638	
	75 10-20-40 (Six).....		1	812 1753	
	75 80 (Six).....	169	1	812 6312	
	75 V8.....		1	812 1753	
	76.....		1	812 1753	
4.110-4	HOSE, Fuel Pump In-Line Filter To Tube (Bulk-Order In Feet)				
	74.....	4.160	AR	320 2187	
	75 (1/4" I.D.).....	4.160	AR	812 5843	
	75/ (5/16" I.D.).....	4.160	AR	812 5823	
4.110-5	CLAMP, Fuel Pump In-Line Filter Hose				
	74/75.....	4.160	AR	318 1643	
	76.....		AR	322 7851	
4.110-6	TUBE, Fuel Filter To Gas Tank (Return)				
	75/ SIX.....		1	535 4360	
	75 V8.....		1	535 4361	
4.110-7	CLIP, Return Line To Fuel Line				
	75 V8.....		2	400 4928	
4.110-11	ATTACHING PARTS, Return Line To Engine Block				
	CLIP, Closed..... 75/ SIX.....	17.134	1	G126166	
	SCREW, Machine..... 75/ SIX.....	17.629	1	G274882	
	SCREW, Machine..... 76 SIX.....	17.629	1	G273773	
4.116-1	GASKET, Fuel Pump				
	74/.....		1	317 4685	
4.118-1	ECCENTRIC, Fuel Pump				
	74/ V8.....		1	321 8314	
4.118-2	ATTACHING PARTS, Eccentric To Camshaft				
	BOLT, Hexagon..... 74/ V8.....	17.042	1	G192353	
	WASHER, Lock..... 74/ V8.....	1.134	1	318 9338	
4.124-1	FITTING, Fuel Line To Carburetor (At Carburetor)				
	74 SIX.....		1	318 7949	
	75/ SIX.....	17.160	1	G137406	
	74 V8.....	17.160	1	G137406	
	75 V8 (W4B-Both Ends Threaded).....	17.160	1	G137406	
	75/ V8 (WDI-Both Ends Threaded).....	17.160	1	G137406	
	75 V8 (W4B-One End Threaded; Other End Nippled).....		1	318 7949	
4.130-1	TANK ASSEMBLY, Gasoline				
	74 10.....		1	535 2227	
	75 10.....		1	812 5733	
	76 10.....		1	812 6873	
	74/ 20-40 (Thriftside).....		1	812 2956	
	74 20-40 (Townside-* 4-11).....		1	535 2980	
	74/75 20-40 (Townside-* 4-12).....		1	812 5753	
	76 20-40.....		1	812 5753	
	74/75 80.....		1	535 0953	
	76 80-90.....		1	535 5314	
4.130-3	ANTISQUEAK, Gasoline Tank				
	74/.....		AR	930 472	
	74/75 (Left Side Of Frame) 10.....		3	975 434	
	74/75 (Bottom Of Tank) 10.....		1	535 2452	
	75 40 (Used With Auxiliary Tank).....		AR	535 4470	

4.130

FUEL - EXHAUST - EMISSION

4.130-4	CAP, Gasoline Tank Vent Outlet Tubes						
	74/	4.132	2	994 415		
4.130-5	CLAMP, Gasoline Tank Vent Outlet Tube Cap						
	74/75	4.160	2	318 1643		
4.130-6	PLUG, Gasoline Tank Drain						
	74/75	20-40.....	17.512	1	G444778		
4.130-7	INSULATOR, Gasoline Tank Mounting Bracket						
	74	10 (Less Adhesive Back)		2	535 2554		
	74/	10 (With Adhesive Back)		2	535 3493		
4.131-1	SKID PLATE KIT, Gasoline Tank						
	74	10.....		1	812 4334		
	74/75	20-40.....	15.524	1	937 630		
	76	80-90.....		1	535 4940		
4.131-2	PLATE, Gasoline Tank Skid						
	75	10.....		1	899 7046		
	74	20-40.....		1	936 839		
	75	20-40.....		1	535 4035		
	76	20-40.....		1	535 5562		
	74	80.....		1	998 398		
	75	80.....		1	535 4644		
4.131-2a	STRAP, Skid Plate To Gasoline Tank						
	76	80-90.....		1	535 4959		
4.131-2b	ATTACHING PARTS, Strap To Skid Plate						
	NUT, Hexagon.....	76 80-90.....	3.303	1	G271184		
4.131-3	ATTACHING PARTS, Plate To Frame						
	BOLT, Hexagon	74 10... (1" Lona).....	17.038	3	G181637		
	BOLT, Hexagon	74 20-40... (3/4" Lona)	17.038	4	G180020		
	BOLT, Hexagon	74/ 20-40... (1" Lona)	17.038	3	G180122		
	BOLT, Hexagon	74/75 20-40... (3-1/2" Lona)	17.038	1	G125973		
	SCREW, Hexagon	74 10... (7/8" Lona)	7.003	7	400 4626		
	SCREW, Hexagon	75/ 20-40... (7/8" Lona)	7.003	2	400 4626		
	WASHER, Lock	74/ 20-40... (3/8")	17.820	4	G120382		
	WASHER, Plain.....	74 20-40	2 050	4	G120386		
	NUT, Hexagon.....	74 10... (Incl. Lockwasher)	17.412	3	G271193		
	NUT, Hexagon.....	74/ 20-40... (3/8"-16)	17.406	4	G120377		
	NUT, Hexagon.....	74 20-40... (1/4"-20)	20.235	4	974 763		
4.131-4	BRACKET, Skid Plate To Front Gasoline Tank						
	74/75	10.....		1	535 3046		
4.131-5	ATTACHING PARTS, Plate To Crossmember						
	SCREW, Tapping	74 80... (5/16"-12 x 3/4")	17.670	4	G9426256		
	SCREW, Tapping	74/75 80... (5/16"-18 x 3/4")	17.671	4	G9424824		
	SCREW, Machine.....	76 80-90.....	17.629	4	G274474 NA		
	BOLT, Hexagon	76 80-90.....	17.038	3	G120229		
	NUT, Hexagon.....	76 80-90.....	3.303	3	400 1457		
	NUT, Speed.....	76 80-90.....	12.075	4	400 4208		
4.131-6	BRACKET, Skid Plate						
	74/75	80.....	11.010	2	998 399		
4.131-7	ATTACHING PARTS, Plate To Bracket						
	BOLT, Hexagon	74 80.....	17.038	4	G181596		
	BOLT, Hexagon	75 80.....	17.038	4	G120229		
	NUT, Hexagon.....	74 80.....	17.412	4	G271187		
	NUT, Hexagon.....	75 80.....	3.303	4	400 1457		

4.131-8	ATTACHING PARTS, Bracket To Crossmember					
	BOLT, Hexagon	74	80	17.038	2	G181596
	BOLT, Hexagon	75	80	17.038	2	G120229
	WASHER, Plain	74	80	17.814	2	G446363
	NUT, Hexagon	74	80	17.412	2	G271187
	NUT, Hexagon	75	80	3.303	2	400 1457
4.131-9	PAD, Skid Plate To Tank					
	74/75 80				1	535 1698
4.131-10	TANK, Auxiliary Gasoline					
	74/ 40 . . . (Incl. Antisqueak)				1	992 400
4.131-11	HOSE, Auxiliary Gasoline Tank To Filler Neck					
	74/ 40 . . . (24" Long)				1	994 512
4.131-12	CLAMP, Auxiliary Gasoline Tank Hose					
	74/ 40 . . . (15/16" To 1")			17.108	4	G451200
	74/ 40 . . . (2.56" To 2.68")			17.108	4	G441973
4.131-13	HOSE, Auxiliary Gasoline Tank Filler Neck To Main Tank					
	74/75 40 . . . (47" Long)				1	994 513
	76 40				1	535 6328
4.131-14	HOSE, Main Tank Inlet To Auxiliary Gasoline Tank Outlet					
	74/ 40				1	916 735
4.131-15	GROMMET, Auxiliary Gasoline Tank Filler Neck					
	74/ 40				1	663 502
4.131-16	BRACKET, Auxiliary Gasoline Tank Hold Down					
	74 46			4.057	1	918 162
4.131-17	ATTACHING PARTS, Bracket To Pick-Up Box Floor					
	SCREW, Machine	74	46		1	973 719
	WASHER, Plain	74	46	17.814	1	G120392
	NUT, Hexagon	74	46		1	978 998
4.131-18	COVER, Auxiliary Gasoline Tank End Panel					
	74/ 40				1	987 841
4.131-19	PANEL, Auxiliary Gasoline Tank Side					
	74/ 40 (Ord. 989 989)				1	987 840
4.131-20	ATTACHING PARTS, Panel And Cover To Pick-Up Box (With Auxiliary Gasoline Tank)					
	SCREW, Machine	74/ 40 . . . (5/8" Long)		20.005	AR	973 719
	SCREW, Machine	74/75 40 . . . (5/8" Long)		20.005	AR	973 719
	CLAMP	74 46 (Use 908 834)			2	961 332
	WASHER, Plain	74/ 40		17.814	16	G120392
	NUT	74/ 40		4.132	AR	981 816
4.131-21	SEAL, Auxiliary Gasoline Tank Outlet Tube					
	74/ 40				1	981 383
4.131-22	COVER, Auxiliary Gasoline Tank Filler Opening Plate					
	74/75 40				1	981 444
4.131-23	CAP, Auxiliary Gasoline Tank Filler Tube					
	74/ 40				1	908 593
4.131-24	STRAP, Auxiliary Gasoline Tank Hold Down					
	75/ 40				1	535 4648
4.131-25	ATTACHING PARTS, Strap To Pick-Up Box Floor Or Corner Post					
	SCREW, Tapping	75 40 . . . (9/16" Long)		29.302	1	987 206
	SCREW, Hexagon Head	75/ 40 . . . (1-1/4" Long)			1	680 580
4.132-1	COVER, Gasoline Tank Check Valve					
	74/75 20 (Thrifside)				1	984 345

4.132

FUEL - EXHAUST - EMISSION

4.132-2	ATTACHING PARTS, Cover To Pick-Up Box				
	SCREW, Machine..... 74/75 20 (Thriftside).....	20.005	6	973	719
4.132-3	WEATHERSTRIP, Gasoline Tank Check Valve Drain Tube				
	74/ Townside		1	981	623
4.134-1	FILTER, Gasoline Tank				
	74/ 10-20-40.....		1	948	523
	74/ 80-90.....		1	914	933
4.138-1	CAP, Nonlocking Gasoline Tank Filler				
	74 (Prime Painted) 10		1	812	3141
	74 (Chrome) 10-20-40		1	535	1809
	75 10 (LCFE)		1	535	4485
	75 10 (WCFE)		1	535	4484
	76 10 (Except Calif.).....		1	535	4485
	76 10 (Calif.)		1	535	5837
	74 (Prime Painted) 20-45 (Townside)		1	812	3141
	75 20-40 (Townside-LCFE)		1	535	4485
	75 20-40 (Townside-WCFE)		1	535	4484
	74 20 (Thriftside)	4.138	1	991	661
	75/ 20-40 (Thriftside-LCFE).....	4.138	1	991	661
	75/ 20-40 (Thriftside-WCFE).....		1	994	739
	76 20-40 (Townside-Except Calif.)		1	535	4485
	76 20-40 (Townside-Calif.)		1	535	5837
	74 46 (Townside-LCFE)		1	999	933
	74 (Prime Painted) 46 (Townside-WCFE).....		1	812	3141
	74 46 (Used Less Townside Box)		1	994	739
	74 80.....		1	994	739
	75/ 80-90 (Except Export)		1	994	739
	75/ 80-90 (Export)	4.138	1	991	661
4.141-1	NECK, Gasoline Tank Filler Upper				
	74 (Upper) 10.....		1	535	2229
	75 (Upper) 10 (LCFE)		1	535	4483
	75 (Upper) 10 (WCFE)		1	535	2229
	76 (Upper) 10 (Except Calif.).....		1	535	4483
	76 (Upper) 10 (Calif.)		1	535	5836
	74/75 (Lower) 10		1	535	2459
	76 (Lower) 10		1	812	7222
	74 20-45 (Townside)		1	535	0696
	75 20-40 (Townside - 4-13).....		1	937	428
	75 20-40 (Townside - 4-14).....		1	535	0696
	76 20-40.....		1	535	0696
	74/ (Inner-Rubber) 20-40 (Thriftside).....		1	937	157
	74 (Outer-Metal) 20-45 (Thriftside).....		1	994	544
	75/ (Outer-Metal) 20-40 (Thriftside-LCFE)		1	930	476
	75/ (Outer-Metal) 20-40 (Thriftside-WCFE)		1	994	544
	74 45 (Thriftside).....	4.138	1	991	661
	74 46 (Used Less Auxiliary Tank).....		1	535	0696
	74 46 (Used With Auxiliary Tank).....		1	937	428
	74 (Outer-Metal) 46 (Townside)		1	994	544
	74 (Outer-Metal) 46 (Thriftside).....		1	930	476
	74/75 80.....		1	992	965
	76 80-90.....		1	535	4760
4.141-2	CLAMP, Filler Neck To Flange				
	74/ 10.....		AR	400	4865
4.141-3	ATTACHING PARTS, Inner Neck To Outer Neck				
	SCREW, Machine..... 74 Thriftside.....		5	994	485
	SCREW, Machine..... 75/ Thriftside.....	17.598	5	G454787	
	NUT, Hexagon..... 74/ Thriftside	17.412	5	G271169	
4.141-4	CLAMP, Gasoline Tank Filler Neck				
	74/ 10... (1-13/16"-2-3/4").....	17.108	2	320	3079

FUEL - EXHAUST - EMISSION

4.141

4.141-5	CLAMP, Gasoline Tank Filler Neck To Tank				
74	Thrifftside... (2-5/8")	17.108	1	G272868	
75	Thrifftside	17.108	1	G441973	
4.141-6	TUBE, Gasoline Tank Filler Neck To Connector Hose				
74	10		1	929 390	
75	10 (* 4-15)		1	929 390	
75	10 (* 4-16)		1	535 5279	
76	10		1	535 5355	
74/	Townside		1	933 661	
4.141-7	ATTACHING PARTS, Tube To Floor				
BOLT, Hexagon	74/ 10	17.038	2	G180020	
BOLT, Hexagon	74/ Townside	31.040	1	961 084	
WASHER, Special	74 Townside	1.009	1	669 118	
WASHER	75/ Townside	17.814	1	400 1120	
WASHER, Plain	76 10	17.	1	G120386	
NUT, Hexagon	74/ 10	17.412	2	G271172	
NUT, Hexagon	74/ Townside	17.412	1	G271184	
4.141-12	CLAMP, Gasoline Tank Filler Neck Tube To Connector				
74/	10	17.108	1	320 3079	
4.141-13	CONNECTOR, Gasoline Filler Neck Tube To Tank				
74/75	10...(9" Long)		1	929 387	
75/	10...(18" Long)		1	535 5358	
74/	Townside	4.131	1	916 735	
4.141-14	CLAMP, Gasoline Filler Neck Tube Connector To Tank				
74/	10	17.108	1	320 3079	
74	Townside	17.108	1	G272868	
75/	Townside	17.108	AR	G441973	
4.141-15	FLANGE, Gasoline Tank Filler Neck				
74	10		1	999 333	
75	10 (LCFE)		1	999 332	
75	10 (WCFF)		1	999 333	
76	10-20-40 (Except Calif.)		1	999 332	
76	10-20-40 (Calif.)		1	535 5835	
74	20-45 (Townside)		1	999 333	
75	20-40 (Townside-LCFE-* 4-13)		1	994 431	
75	20-40 (Townside-WCFF-* 4-14)		1	999 333	
75	20-40 (Townside-LCFE-* 4-14)		1	999 332	
74	46 (Townside)		1	994 431	
74/75	80...(Less Restrictor)		1	992 792	
75	80...(Incl. Restrictor)		1	535 4170	
76	80-90 (Except Canada)(Except Export)		1	535 5913	
75	80 (Canada) ... Less Restrictor		1	992 792	
76	80-90 (Canada) ... Less Restrictor		1	535 5912	
75	80 (Export) ... Less Restrictor		1	992 793	
76	80-90 (Export) ... Less Restrictor		1	535 5927	
4.141-16	GASKET, Gasoline Tank Filler Neck Flange				
74/	10 (Townside)		1	936 433	
4.141-16a	GROMMET, Filler Neck Flange				
74/	80-90		1	654 758	
4.141-17	ATTACHING PARTS, Flange To Body				
SCREW, Machine	74 46 (Townside)		6	994 485	
SCREW, Tapping	74 10-20-45 (Townside)	17.670	6	G9414597	
SCREW, Tapping	76 10-20-40	17.670	6	G9414597	
SCREW, Machine	74/ 80-90	17.598	2	G160515	
SCREW, Tapping	75 20-40 (Townside-* 4-14)	17.670	6	G9414597	
SCREW, Machine	75 20-40 (Townside-* 4-13)	17.598	6	G454787	
NUT, Hexagon	75 20-40 (Townside-* 4-13)	17.412	6	G271169	
NUT, Hexagon	74 46 (Townside)	17.412	6	G271169	
NUT, Hexagon	74/75 80	17.412	2	G271172	
NUT, Hexagon	76 80-90		2	968 861	

4.141

FUEL - EXHAUST - EMISSION

4.141-17a CLAMP, Filler Hose To Filler Neck Flange			
74	80.....	17.108	2 G272868
75/	80-90.....	17.108	2 G441973
4.141-18 PLATE, Gasoline Tank Filler Neck Flange			
75	20-40 (Townside-* 4-13).....		1 929 831
74	46 (Townside).....		1 929 831
4.141-19 SUPPORT, Gasoline Tank Filler Neck Flange			
75 /	20-40.....		1 932 862
74	46 (Thrifside).....		1 932 862
4.141-20 HOSE, Gasoline Tank Filler Air Vent			
74/	(Filler Neck To Fender Well Tube) 10.....		1 535 2535
74/	(Fender Well Tube To Gas Tank) 10.....		1 992 616
74/	20-40 (Thrifside).....		1 937 156
74	20-40 (Townside-* 4-9).....		1 535 2992
74/75	20-40 (Townside-* 4-10).....		1 535 4664
76	20-40.....		1 535 4664
74/75	80.....		1 992 763
76	80-90.....		1 535 4761
4.141-21 CLAMP, Gasoline Tank Air Vent Hose			
74/	10-20-40.....	17.108	AR G451200
74/75	(1-1/16")...80.....	17.108	2 G454400
76	80-90.....		2 320 3077
4.141-24 ADAPTER, Gasoline Tank Air Vent Hose			
74/	20-40-80-90.....		1 937 153
4.141-25 ATTACHING PARTS, Adapter To Filler Neck			
WASHER (Rubber).....	74/ 20-40-80-90.....		2 994 478
WASHER (Steel).....	74/ 20-40-80-90.....		AR 938 152
NUT, Stamped.....	74/ 20-40-80-90.....	17.428	1 G145507
4.142-10 CLAMP, Fuel Vapor Line Connecting			
74/	(7/16").....	4.141	AR 319 7566
74/	(1/2").....		AR 934 245
74/	(9/16").....	4.160	AR 318 1643
4.142-12 ATTACHING PARTS, Vent Line To Frame			
"S" CLIP.....	74/75 10.....	23.028	2 400 0021
CLIP, Fastener.....	74/ 10.....		5 931 341
CLIP, Closed.....	74/75.....	3.215	1 G192107
SCREW, Tapping.....	74/75 80 (Six).....	17.670	1 G175997
4.142-13 ATTACHING PARTS, Tube To Floor Pan			
CLIP, Fastener.....	74/.....		1 931 341
4.142-14 ATTACHING PARTS, Vent Line To Fuel And Brake Line			
"S" CLIP.....	74/75 20-40.....	23.028	AR 400 0021
"S" CLIP.....	75/ 80-90.....	23.028	AR 400 0021
"S" CLIP.....	76.....	4.110	AR 400 4928
STRAP, Locking.....	74/75 (Metal) 10.....		2 927 557
STRAP, Locking.....	74/75 (Nylon) 10.....		2 998 604
STRAP, Locking.....	74/75 (Nylon) 10-20-40.....	3.196	1 318 1008
STRAP, Locking.....	75 10-20-40.....	3.106	1 322 3227
4.142-15 VALVE, Gasoline Tank Fuel Vent Line Check			
74/		1 319 8666
4.142-16 ATTACHING PARTS, Check Valve Mounting			
SCREW, Pan Head.....	74/ 20-40.....	17.598	1 G159947
WASHER, Plain.....	74/.....	17.814	2 G120391
NUT, Hexagon.....	74/.....	17.412	2 G271166

FUEL - EXHAUST - EMISSION

4.144

4.142-17	HOSE, Check Valve Vent Line Hose To Check Valve (Reducing Hose)				
	74" (Straight Type).....	4.144	AR	535 1249	
	74" (Elbow Type).....		1	535 1248	
4.142-18	HOSE, Check Valve Hose To Connector Hose And To Vapor Storage Canister (Bulk-Order In Feet)				
	74" (Reinforced).....		AR	535 1496	
	75" (Nylon).....		AR	812 5720	
4.142-19	HOSE, Check Valve To Connector Hose And To Gasoline Tank Vent Tubes (Bulk-Order In Feet)				
	74" (Black Nylon).....		AR	998 068	
4.142-20	HOSE, Check Valve Connector And Gasoline Tank Vent Tube (Bulk-Order In Feet)				
	74" (Rubber).....	4.144	AR	535 0898	
4.142-21	TUBE, Gasoline Tank Vent				
	74" (Front) 20-40.....	4.132	1	998 140	
	74" (Rear) 20-40.....	4.132	1	994 094	
4.143-1	COVER, Gasoline Tank Filler Tube Protective				
	74" 20-40 (Townside-Used Less Auxiliary Gasoline Tank).....		1	989 234	
	74" 40 (Townside-Used With Auxiliary Gasoline Tank).....		1	989 989	
4.143-2	ATTACHING PARTS, Cover To Floor Pan And Post				
	SCREW, Machine..... 74" 20-40 (Townside).....	18.650	AR	G9415482	
	CLAMP..... 74" 46 (Used With Auxiliary Gasoline Tank).....				
			2	961 332	
	WASHER, Plain..... 74" 20-40 (Townside).....	17.814	AR	G120392	
	WASHER, Plain..... 76.....	17.814	AR	G120391	
	NUT..... 74" 46 (Used With Auxiliary Gasoline Tank).....		15	981 816	
	NUT, Hexagon..... 76.....	17.412	AR	G271166	
4.143-3	SEAL, Gasoline Tank Filler Tube Protective Cover				
	74" 20-40 (Townside).....		1	958 845	
4.144-1	CANISTER, Fuel Vapor Storage				
	74" (Two Outlets).....		1	321 9181	
	74" (Three Outlets).....		1	322 6809	
	76.....		1	322 7282	
4.144-1a	PLUG, Vapor Canister Metering				
	74.....		1	321 3949	
4.144-1b	FILTER, Fuel Vapor Storage Canister				
	74/75.....		1	812 0330	
	76.....		1	322 7279	
4.144-1c	COVER, Fuel Vapor Storage Canister Filter				
	76.....		1	322 7280	
4.144-1d	CAP, Canister Carburetor Bowl Vent				
	76.....		1	322 7272	
4.144-2	BRACKET, Fuel Vapor Storage Canister				
	74 (Upper) 10-20-40 (Six).....		1	998 674	
	74 (Lower) 10-20-40 (Six).....		1	992 993	
	74 10-20-40 (V8).....		1	535 1259	
	75" 10-20-40.....		1	535 4406	
	74" 80-90..... (Use 322 0648)		1	321 0961	
4.144-3	ATTACHING PARTS, Bracket To Support				
	SCREW, Machine..... 74 10 (Six).....	17.646	1	G9409106	
	SCREW, Machine..... 74".....	17.671	1	G9420882	
4.144-3a	ATTACHING PARTS, Bracket To Dash				
	BOLT, Flange..... 74 10-20-40 (V8).....	17.038	2	G180020	
	SCREW, Tapping..... 75" 10-20-40 (V8).....	17.670	2	G9416612	
	SPACER..... 74 10-20-40 (V8).....	7.128	2	940 401	
	WASHER Lock..... 74 10-20-40 (V8).....	17.820	2	G120380	
	WASHER, Plain..... 74" 80-90.....	17.412	2	G120391	
	NUT, Hexagon..... 74" 80-90.....	17.412	2	G271166	

4.144 FUEL - EXHAUST - EMISSION

4.144-4	SUPPORT, Fuel Vapor Storage Canister Mounting Bracket						
	74 10-20-40 (Six).....			1		994 058	
4.144-5	ATTACHING PARTS, Support To Right Splash Apron						
	SCREW, Machine..... 74 10-20-40 (Six).....	17.646	4		G9409106		
	NUT, Hex..... 74 10-20-40 (Six).....	17.406	4		G120375		
4.144-6	CLAMP, Fuel Vapor Storage Canister To Brackets						
	74 10-20-40 (Six).....	17.108	2		G9412043		
4.144-7	SHIELD, Canister						
	74 80... (5/16" Dia. Attachment Hole)..... (Ord. 545 5300)		1		545 5169		
	74/75 80... (3/8" x 3/4" Attachment Hole).....		1		545 5300		
	76 80-90.....		1		545 9896		
4.144-8	ATTACHING PARTS, Shield To Body						
	SCREW, Machine..... 74 80 (* 4-1)... (1/4"-20 x 1/2").....	17.598	1		G454542		
	SCREW, Machine..... 74/75 80 (* 4-2).....	29.052	2		974 764		
	SCREW, Tap..... 74 80 (* 4-1)... (10-16 x 1/2").....	17.660	3		812 0052		
	WASHER, Lock..... 74/75 80 (* 4-2).....	12.075	1		987 146		
4.144-11	CLIP, Canister Hose To Air Cleaner Hose						
	74/75.....		1		321 9321		
4.144-11a	STRAP, Canister Hose To Air Cleaner Hose Or Carburetor						
	75/76.....	3.106	AR		322 3227		
4.144-12	HOSE, Check Valve Vent Line To Canister (Reducing Coupling)						
	74/75 10-20-40 (78).....		1		535 1249		
4.144-12a	TUBE, Check Valve To Canister						
	76 83.....		1		535 5811		
	76 84.....		1		535 5813		
	76 90.....		1		535 5812		
4.144-13	HOSE, Canister To Air Cleaner (Bulk-Order In Feet)						
	75/76.....	22.050	AR		812 5813		
	74.....		AR		535 1951		
4.144-14	HOSE, Canister To Vent Line (Bulk-Order In Feet)						
	74.....		AR		535 0898		
4.144-15	STRAP, Hose (Nylon)						
	76.....		AR		322 3227		
	74/75 80.....	3.196	AR		318 1008		
4.144-17	CLAMPS, Vapor Canister Hose						
	74/75 (7/16").....	4.141	AR		319 7566		
	74/75 (9/16").....	4.160	AR		318 1643		
	75/76 (3/4").....	1.117	AR		321 9466		
4.144-18	HOSE, Canister To Carburetor						
	75.....		AR		812 5781		
4.152-1	STRAP, Gasoline Tank Mounting						
	74/75 10.....		1		535 2232		
	76 10.....		1		535 5230		
	74/75 40-43.....		1		930 474		
	76 20-40.....		1		535 5951		
4.152-2	ATTACHING PARTS, Strap To Support						
	BOLT, Hexagon..... 74 20-40... (1-1/8" Long).....		2		973 149		
	BOLT, Hexagon..... 74/75 20-40... (3" Long).....	17.038	2		G124128		
	"J" BOLT..... 74/75 10.....		1		535 2235		
	"J" BOLT..... 76 10.....		1		535 5863		

FUEL - EXHAUST - EMISSION

4.160

WASHER, Plain.....	76	20-40.....	8.350	2	664 288
WASHER, Plain.....	74/75	10-20-40...(13/16" O.D.).....	17.814	2	G120394
WASHER, Plain.....	74/75	20-40...(1-3/8" O.D.).....	17.814	2	G446477
WASHER, Plain.....	74/75	20-40...(1/2" O.D.).....	17.814	2	G120390
NUT, Hexagon.....	74/75	10.....	17.406	1	G120377
NUT, Lock.....	74/75	10.....	17.	1	G128066
NUT, Hexagon.....	74	20 (Thriftside).....	17.416	2	G442827
NUT, Lock.....	74	20-40 (Townside).....	8.001	2	994 925
NUT, Lock.....	75/76	20-40 (Thriftside).....	8.001	2	994 925
NUT, Lock.....	75	20-40 (Townside).....	17.416	2	G9416532
PUSHNUT.....	76	20-40.....	1	400 0235
4.152-3 BRACKET, Gasoline Tank Strap Support (To Frame)					
74/75	10.....	1	535 2027
76	10.....	1	812 6862
4.152-4 BRACKET, Gasoline Tank Mounting					
76	10.....	1	535 4989
74/75	(Front) 10.....	4.130	1	929 457
74/75	(Front) 80.....	1	999 399
74/75	(Rear) 10.....	4.130	1	535 2017
74/75	(Rear-Left) 80.....	1	994 638
74/75	(Rear-Right) 80.....	1	994 639
4.152-5 ATTACHING PARTS, Tank To Frame Brackets					
GROMMET, Pad.....	74/75	80.....	4.130	2	992 825
BOLT, Hexagon.....	74/75	10.....	17.038	AR	G120229
BOLT, Hexagon.....	74/75	(Front Bracket) 80...(3/4" Lona).....	17.038	3	G180077
BOLT, Hexagon.....	74	(Rear Bracket) 80...(3/4" Lona).....	17.038	2	G181595
BOLT, Hexagon.....	74/75	(Rear Bracket) 80...(1-1/4" x 24).....	17.038	2	G180081
SCREW, Hexagon.....	74/75	(Rear Bracket) 80...(1-1/4" x 18).....	17.670	2	G175997
SPACER, Angle.....	74/75	10.....	4.130	AR	535 1465
WASHER, Plain.....	74/75	10.....	3.095	AR	A 11775
WASHER, Plain.....	74/75	(Rear Bracket) 80.....	17.814	2	G120393
WASHER, Plain.....	74/75	80.....	3.095	2	A 11775
NUT, Hexagon.....	74/75	(Front Bracket) 80.....	17.412	AR	G271184
NUT, Hexagon.....	74/75	(Front And Rear Bracket) 80.....	17.416	AR	G9413447
4.152-6 ATTACHING PARTS, Bracket To Frame Side Rail					
BOLT, Hexagon.....	74	10...(1" Lona).....	17.038	2	G180079
BOLT, Hexagon.....	75/76	10...(7/8" Lona).....	17.038	AR	G120229
WASHER, Plain.....	74/75	10.....	17.814	AR	G120393
WASHER, Lock.....	74/75	10.....	17.820	2	G120214
NUT, Hexagon.....	74/75	10.....	17.406	2	G120376
NUT, Hexagon.....	76	10.....	3.303	2	400 1457
4.152-7 ANTI-SQUEAK, Gasoline Tank Strap					
74	10.....	4.130	2	930 472
4.160-1 TUBE, Fuel Line					
74	(Rubber-4-7).....	4.144	AR	535 0898
74	(Black-Nylon-4-7).....	4.142	AR	998 068
75/76	(Rubber)...(.290 I.D.).....	AR	812 5843
75	(Rubber)...(.290 I.D.).....	4.144	AR	535 0898
75/76	(Rubber)...(.312 I.D.).....	AR	812 5823
75	(Nylon)...(.232 I.D.).....	4.142	AR	998 068
4.160-2 TUBE, Front Fuel Line					
74	10-20-40 (Six-4-8).....	1	535 4359
75	10-20-40 (Six).....	1	535 4359
76	10-20-40 (Six).....	1	535 5518
74	10-20-40 (V8-4-8).....	1	535 3887
75	10-20-40 (V8).....	1	535 3887
74	83 (Six).....	1	535 1633
75	83 (Six).....	1	535 4813
76	83 (Six).....	1	535 5538
74	83 (V8).....	1	535 2645
75	83 (V8).....	1	535 4815
76	83 (V8).....	1	535 5809

4.160

FUEL - EXHAUST - EMISSION

	74	84 (Six)	1	535 1634
	75	84 (Six)	1	535 4814
	76	84 (Six)	1	535 5539
	74	84 (V8)	1	535 2646
	75	84 (V8)	1	535 4816
	76	90 (Six)	1	535 3268
	76	90 (V8)	1	535 5810
4.160-2a	TUBE, Intermediate Fuel Line			
	76	10-20-40 (V8)	1	535 5394
4.160-3	TUBE, Rear Fuel Line			
	74	10-10-8	1	535 3888
	75	10	1	535 3888
	76	10	1	535 5095
	74	20-40 (4-8)	1	535 3881
	75	20-40	1	535 3881
	76	20-40	1	535 5535
4.160-4	TUBE, Return Fuel Line			
	75	(Front) 10-20-40	1	535 4362
	76	(Front) 10-20-40	1	535 5393
	75	(Rear) 10	1	535 4363
	76	(Rear) 10	1	535 5096
	75	(Rear) 20-40	1	535 3882
	76	(Rear) 20-40	1	535 5540
	76	83	1	535 5816
	75	83 (V8)	1	535 4403
	75	84 (V8)	1	535 4404
	76	84	1	535 5818
	76	90	1	535 5817
4.160-5a	HOSE, Gasoline Tank To Fuel Tank Reducing			
	74/	(5.8" To 5.16")	1	948 861
4.160-6	CLAMPS, Fuel Line			
	76	(3/8")	6.631	AR 400 4831
	74/	(5/8")	4.146	AR 378 6276
	75	(7/32")		AR 322 7852
	75	(7/16")	13.072	AR 400 4302
	74/	(9/16")		AR 318 1643
	75	(19/32")		AR 322 7851
	75/	(17/32")		AR 322 7850
4.160-7	BRACKET, Fuel Line To Frame			
	74	(Front) (To Frame-At Bend To Pump) 10-20-40 (4-7)	1	535 2958
4.160-8	ATTACHING PARTS, Bracket To Frame And Fuel Line			
	SCREW, Tapping	74 10-20-40	17.672	2 G172455
	CLIP, Closed	74 10	3.215	1 G192107
	CLIP, Fastener	74 10-20-40	17.130	1 G127753
	WASHER, Plain	74 10-20-40	17.814	1 G120393
4.160-9	ATTACHING PARTS, Fuel Line To Frame			
	SCREW	76 80-90	13.440	AR 400 4077
	SCREW, Tapping	74/ (3/4" Long)	17.672	AR G172455
	SCREW, Tapping	74/75 80... (1/2" Long)	17.670	AR G172427
	SCREW, Tapping	74 75 80 (Six)... (1-1/4" Long)	17.670	1 G175997
	SCREW	76 20-40... (5/8" Long)	10.350	AR 400 5063
	CLIP, Fastener	74 75	17.130	AR G127753
	CLIP, Closed	74/	3.215	AR G192107
	CLIP, Closed	76 80-90	17.134	AR G120521
	CLIP, Closed	76 80-90	17.134	AR G120524
	CLIP, Spring	74/75 80	29.226	AR 987 303
	CLIP	74/ 80-90	8.101	AR 914 990

FUEL - EXHAUST - EMISSION

4.178

	CLIP	75	80 (V8)	17.130	AR	G432686
	CLIP	76	80-90 (Six)	17.134	AR	G120522
	CLIP, Open	75/		8.106	AR	400 4901
	CLIP, Open	76	80-90		1	400 5649
	CLIP	76	80-90 (Used With Single 3/8" Tube)	6.631	1	400 4831
	CLIP	74	80 (V8)	6.350	1	A 1378
	CLIP	74/75	80	3.165	AR	945 201
	"C" CLIP	76	80-90 (V8-Used With Double 3/8" Tube)		1	400 4961
4.160-11	ATTACHING PARTS, Fuel Line Hose Clip To Steering Column Cover					
	CLIP, Closed	74/	10-20-40	3.215	AR	G192107
	WASHER, Plain	74/	10-20-40	17.814	1	G120393
	NUT, Hexagon	74/	10-20-40	17.406	1	G120376
4.160-13	ATTACHING PARTS, Fuel Line To Brake Line					
	SCREW	76	10	10.350	2	400 5063
	"C" CLIP	74/	10-20-40		AR	313 7319
	"S" CLIP	74	10-20-40 (* 4-7)	23.028	4	400 0021
	"S" CLIP	74/		4.110	AR	400 4928
	CLIP	74	20-40 (* 4-8)		1	931 341
	CLIP	75/	20-40		1	931 341
	CLIP, Closed	74	20-40 (V8)	3.215	AR	G192107
	CLIP, Fastener	74	20-40	17.130	5	G127753
	CLIP, Open	76	10		2	400 4901
4.160-14	TUBE ASSEMBLY, Gasoline Tank Outlet And Return					
	74	10			1	999 033
	75/	10			1	994 611
4.160-15	LOCK, Gasoline Tank Outlet And Return Tube Assembly					
	74/	10-20-40		3.615	1	929 669
4.160-16	GASKET, Gasoline Tank Outlet And Return Tube Assembly					
	74/	10-20-40			1	941 521
4.175-1	TUBE, Fuel Pump To Gasoline Filter					
	74	SIX			1	321 9865
	76	SIX			1	322 5744
	75	10-20-40 (Six)			1	322 5744
	75	80 (Six)			1	322 5745
	74	V8			1	321 5899
	75	V8 (WDT)			1	321 5899
	76	V8 (WDT)			1	322 8198
	75	V8 (W4B)			1	322 6790
	76	V8 (W4B)			1	322 8196
4.176-1	TUBE, Gasoline Filter To Carburetor					
	75/	SIX			1	322 5743
	74	V8 (WDT)			1	321 3836
	75	V8 (WDT)			1	535 4371
	76	V8 (WDT)			1	321 3836
	74	V8 (W4B)			1	812 3088
	75	V8 (W4B)			1	535 4373
	76	V8 (W4B)			1	322 6792
4.176-2	CLIP, Fuel Line To Rocker Arm Cover					
	75	V8		3.165	1	998 699
	76	V8			1	400 1802
4.178-1	PIPE, Exhaust					
	74/75	10-25-40 (258-W3ST)			1	535 1061
	76	10 (258-WAT)			1	535 5462
	74/75	16-17-20-40 (258-W4ST)(258-WHT)			1	535 1060
	76	16-17 (258-W3ST)			1	535 5464
	75	10-20-40 (V8)			1	535 4302
	76	10 (V8)			1	535 5359
	76	20-40 (258-W3ST)			1	535 1061
	76	20-40 (258-WAT)(258-W4ST)			1	535 1060

4.178

FUEL - EXHAUST - EMISSION

76	20-40 (V8)	1	535 4302
74	83 (LHD-Six-Used Less Winch-Used Less Power Takeoff)	1	535 3455
74	83 (LHD-Six-Used With Winch-Used With Power Takeoff)	1	535 3085
75	83 (LHD-Six-W3ST)	1	535 4382
75	83 (LHD-Six-W4ST)	1	535 4386
74	83 (RHD-Six)	1	535 3079
75	83 (RHD-Six)	1	535 4390
76	83 (LHD-Six-Except Calif.)	1	535 5981
76	83 (LHD-Six-Calif.)	1	535 4782
74	84 (LHD-Six)	1	535 3087
74	84 (RHD-Six)	1	535 3081
75	84 (LHD-Six)	1	535 4384
75	84 (RHD-Six)	1	535 4392
76	84 (LHD-Six)	1	535 5983
75	80 (V8-* 4-9)	1	535 4586
75	80 (V8-* 4-10)	1	535 3502
76	83 (V8-W3ST)	1	535 4780
76	90 (V8-W3ST)	1	535 5039
76	90 (V8-WAT)	1	535 5041
74	(Left) 10-25-40 (360)(401)	1	535 2478
74	(Left) 83 (V8)	1	535 3089
74	(Left) 84 (V8)	1	535 3090
74	(Right) 10-25-40 (360)(401)	1	535 2481
74	(Right) 80 (V8)	1	535 3007
76	90 (Six-Calif.)	1	535 3516
76	90 (Six-Except Calif.)	1	535 5985

4.178-2 PIPE, Exhaust Extension

75	80 (V8-LCCS) ... (22" Long)	4.212	1	535 4450
75	80 (V8-LCCS) ... (41-1/2" Long)	4.212	1	535 4545
76	83-90 (V8-LCCS)		1	535 4794

4.178-3 ATTACHING PARTS, Pipe To Manifold

STUD,	74/ SIX	2	315 6257	
STUD,	74/ (Left) V8	AR	400 4110	
STUD,	74/ (Right) V8	AR	400 4109	
WASHER, Plain	74/75 10-20-40 (258)	17.814	2	G120394
WASHER, Plain	74/ 10-25-40 (360)(401)		4	400 3808
WASHER, Plain	76 80-90 (Six)	17.814	AR	400 1181 NA
WASHER, Plain	76 80-90 (V8)		AR	400 3808
WASHER, Lock	74/75 80 (V8)	17.820	4	G120382
NUT, Hexagon	74/	1.067	AR	535 1688

4.178-4 CLAMP ASSEMBLY, Exhaust Pipe To Crossover Pipe

74	10-25-40 (360)(401)	4.205	1	319 5233
----	---------------------------	-------	---	----------

4.186-1 SEAL, Exhaust Pipe To Manifold

76	SIX	1	322 3546
74/75	10-20-40 (258)	1	321 6643
74/	10-25-40 (360)(401)	2	535 3072
74	80 (Six)	1	317 5842
75	80 (Six)	1	321 6643
74/	80 (V8)	2	535 3072

4.186-2 FLANGE, Exhaust Pipe Manifold

74/75	80 (Six)		1	938 486
74/75	80 (V8)	4.168	2	321 1248

4.195-1 BRACE, Exhaust Pipe

74/	10-25-40 (258-W3ST)	1	948 129
74/75	16-17-20 (258-W4ST)(258-WHT)	1	931 605
76	16-17-20-40 (258-WHT)	1	535 2726
74/	10-25-40 (360-W4ST)(401-W4ST)	1	535 2972
76	20-40 (V8-W4ST)	1	931 605
74	25-40 (360-WHT-LQT)(401-WHT-LQT)	1	535 2972
74/	10-25-40 (360-WHT-WQT)(401-WHT-WQT)	1	535 2673

FUEL - EXHAUST - EMISSION

4.200

74/	10-25-40 (360-W3ST)(401-W3ST)	1	535 2964
75	40 (258-WHT)	1	535 2726
75	40 (258-W4ST)	1	931 605
74	80 (Six)	1	999 537
75	80 (RHD-Six)	1	999 537
74	80 (V8)	1	999 683
4.195-1a	BRACKET, Exhaust Pipe Support		
74	10-25-40 (V8-LQT)	1	535 2673
75	10-20-40 (V8)	1	535 2673
74/	25-40 (258-WQT)	1	535 2726
4.195-1b	ATTACHING PARTS, Bracket To Brace		
STUD	74 10-25-40 (V8-LQT)	1	400 4885
STUD	75 10-20-40 (V8)	1	400 4885
NUT, Hexagon	74/ 10-25-40 (V8-LQT)	17.406	1 G271501
4.195-2	ATTACHING PARTS, Brace To Housing Or Engine		
STUD	74/ 10-25-40 (V8-WHT-WQT)	1	400 4885
BOLT, Hexagon	74/ 10-25-40 (WMT)(V8-WHT-LQT)	2	998 593
BOLT, Hexagon	74/ 80 (Six)	17.038	1 G180077
BOLT, Hexagon	74 80 (V8)	17.038	1 G180145
SCREW, Hexagon	74/ 10-25-40 (258-WQT)	17.629	2 812 1353
SCREW, Machine	75 80 (Six)	17.629	1 812 1298
WASHER, Lock	74/ 10-25-40 (WMT)	17.280	2 G120382
WASHER, Lock	74 80 (V8) ... (7/16" I.D.)	17.820	1 G120383
WASHER, Lock	74/ 80 (V8) ... (5/16" I.D.)	17.820	1 G120214
NUT, Hexagon	75 80 (Six)	1	400 1456
4.195-3	CLAMP, Exhaust Pipe To Bracket		
74/	10-20-40 (258)	1	941 324
74/	80 (Six)	1	941 324
74	80 (V8)	4.178	1 812 3147
4.195-4	ATTACHING PARTS, Exhaust Pipe Or Clamp To Brace Or Bracket		
BOLT, Hexagon	74 10-20-40 (258) ... (5/16"-24 x 1")	17.038	1 G121661
BOLT, Hexagon	74/ 10-20-40 (258) ... (5/16"-18 x 1")	17.038	1 G180079
BOLT, Hexagon	74/ 80 (Six)	17.038	1 G181613
PLATE, Support	74 80 (V8)	4.230	2 535 1266
U-BOLT	74/ 10-25-40 (360)(401) ... (4" Lona)	4.205	AR 400 4834
U-BOLT	74/ 10-25-40 (360)(401) ... (3-1/8" Lona)	4.195	AR 400 4835
U-BOLT	74 80 (Six)	4.205	1 941 013
U-BOLT	74 80 (V8)	4.178	1 991 699
SADDLE	74/ 10-25-40 (360)(401)	4.195	AR 535 2492
SADDLE	74 80 (Six)	4.205	1 941 014
SADDLE	74 80 (V8)	4.178	1 994 286
WASHER, Lock	74 80 (V8)	17.820	2 G120214
NUT, Hexagon	74 10-20-40 (258) ... (5/16"-24)	17.412	1 G271187
NUT, Hexagon	74/ 10-20-40 (258) ... (5/16"-18)	17.412	1 G271184
NUT, Hexagon	74/ 10-25-40 (360)(401)	25.039	AR 400 3587
NUT, Hexagon	74 80 (Six-Locking)	17.416	2 G9413447
NUT, Hexagon	74/ 80 (Six-Plain)	17.412	1 G271187
NUT, Hexagon	74 80 (V8)	17.406	2 G120376
4.200-1	INSULATOR, Exhaust Pipe Rear Support		
74	80	232	1 535 1989
75	80 (Six)	232	1 535 1989
4.200-2	BRACKET, Muffler To Frame		
75	80 (V8)	1	535 4180
76	80-90 (WCCS)	1	535 5308
4.200-3	ATTACHING PARTS, Bracket To Frame		
BOLT, Hexagon	75 80 (V8)	17.038	1 G180121
BOLT, Hexagon	76 80-90	17.038	2 G180081
NUT, Hexagon	75 80 (V8)	17.412	1 G271190
NUT, Hexagon	76 80-90	17.412	2 G9413447 NA

4.205

FUEL - EXHAUST - EMISSION

4.205-1 CLAMP ASSEMBLY, Exhaust Pipe To Muffler				
74/	10-20-40 (258).....	4.178	1	812 3147
74	10-25-40 (360)(401).....	80	1	812 4874
74	80.....	4.178	1	812 3147
4.205-2 ATTACHING PARTS, Clamp To Pipe				
U-BOLT	74 10-20-40 (258).....	4.178	1	991 699
U-BOLT	74 10-25-40 (360)(401).....	1	400 4834
U-BOLT	74 80.....	4.178	1	991 699
U-BOLT	75 80 (Six).....	4.178	1	991 699
U-BOLT	75' 10-20-40.....	1	535 4473
PLATE, Support	74 10-20-40 (258).....	4.230	1	535 1266
PLATE, Support	74 10-25-40 (360)(401).....	4.230	AR	535 2503
PLATE, Support	74 80.....	4.230	1	535 1266
PLATE, Support	75 80 (Six).....	4.230	1	535 1266
SADDLE	74 10-20-40 (258).....	4.178	1	994 286
SADDLE	74 10-25-40 (360)(401).....	4.195	1	535 2492
SADDLE	75' 10-20-40.....	1	535 4474
SADDLE	74 80.....	4.178	1	994 286
SADDLE	75 80 (Six).....	4.178	1	994 286
WASHER, Lock	74 10-20-40 (258).....	17.820	2	G120214
WASHER, Lock	74 80.....	17.820	2	G120214
NUT, Hexagon	74 10-20-40 (258).....	17.406	2	G120376
NUT, Hexagon	75/ 10-20-40.....	10.260	AR	400 3909
NUT, Hexagon	74 80.....	17.406	2	G120376
NUT, Hexagon	75 80 (Six).....	17.406	2	G120376
NUT, Lock	74 10-25-40 (360)(401).....	25.039	2	400 3587
4.210-1 MUFFLER				
74/	10-20-40 (258).....	1	535 1912
74	10-20-40 (360)(401).....	1	535 2494
75	10 (V8-Except Cherokee Chief).....	1	535 4446
75	10 (V8-Cherokee Chief).....	1	535 5541
76	10-20-40 (360)(401).....	1	535 5541
75	20-40 (V8).....	1	535 4446
74	80.....	1	535 1986
75	80 (Six).....	1	535 1986
75	80 (V8)...(Incl. Tail Pipe).....	1	535 4541
76	80-90 (LCCS).....	1	535 1986
76	80-90 (WCCS)...(Incl. Tail Pipe).....	1	535 4801
4.212-1 CONVERTER, Catalytic				
75	80.....	1	535 3871
76	80-90 (Six-Calif.).....	1	535 3871
76	80-90 (V8-Except Calif.).....	1	535 3871
76	80-90 (V8-WAT-Calif.).....	1	535 3871
4.212-1a PLUG, Catalytic Converter				
75/	1	812 5775
4.212-2 ATTACHING PARTS, Converter To Exhaust Pipe Flange				
BOLT, Hexagon	75 80 (V8).....	17.039	4	812 5845
BOLT, Hexagon	76 80-90 (WCCS).....	AR	812 5845
NUT, Hexagon	75 80 (V8).....	11.075	4	400 4008
NUT, Hexagon	76 80-90 (WCCS).....	AR	400 4008
4.212-3 GASKET, Converter To Exhaust Pipe Flange				
75	80 (V8).....	1	322 6666
76	80-90 (WCCS).....	1	322 6666
4.212-4 ATTACHING PARTS, Converter To Pipe Extension Or Muffler				
PLATE, Lock	76 80-90.....	4.230	AR	535 1266
CLAMP ASSEMBLY	75 80 (V8).....	215	AR	812 5780
CLAMP ASSEMBLY	76 80-90.....	AR	812 5780

4.212-5	CATALYST, Catalytic Converter						
	75/ (Granules).....			1		812	5774
4.219-1	INSULATOR, Muffler And Tail Pipe Support						
	74 10-20-40 (258).....	229	4.234	1		535	1730
	75 10 (258).....	233	4.234	1		535	4074
	76 10-20-40 (258).....	229	4.234	1		535	1730
	74/ 10-25-40 (360)(401).....	231		1		535	2675
	75 10 (V8).....	233	4.234	1		535	4074
	75 20-40 (258).....	229	4.234	1		535	1730
	75 80 (V8).....			1		535	3523
	76 80-90 (LCCS).....	229	4.234	1		535	1730
4.219-2	PLATE, Insulator To Frame Bracket						
	76 10 (258).....			1		535	4177
	76 10-20-40 (360)(401).....			1		535	5366
	75 80 (V8).....		4.234	1		535	4177
	76 80-90 (Flat).....			1		535	4177
	76 80-90 ("L" Shaped).....			1		535	4549
4.219-3	ATTACHING PARTS, Insulator To Frame Bracket						
	BOLT, Hexagon..... 75 80 (V8).....		17.038	2		G180079	
	BOLT, Hexagon..... 76 80-90.....		17.	2		G180077	
	NUT, Hexagon..... 75 80 (V8).....		17.412	2		G271184	
	NUT, Hexagon..... 76 80-90.....		17.412	2		G271184	
4.219-4	ATTACHING PARTS, Insulator To Crossmember						
	BOLT, Hexagon..... 75/ 10-20-40.....		17.038	1		G180081	
	NUT, Lock..... 75/ 10-20-40.....		17.416	1		G9413447	
4.227-1	PIPE, Tail						
	74 10 (258).....			1		535	1913
	75 10 (258).....			1		535	4534
	76 10 (258).....			1		535	5207
	74 10 (360)(401).....			1		535	2495
	75 10 (V8) ..(Incl. Noise Diffuser On End).....			1		535	5032
	75 10 (V8) ..(Less Noise Diffuser).....			1		535	4535
	76 10 (V8) ..(Less Noise Diffuser).....			1		535	5211
	76 10 (V8) ..(Incl. Noise Diffuser On End).....			1		535	5360
	74/ 20 (Six-* 4-19).....			1		535	1915
	76 20 (Six-* 4-20).....			1		535	6033
	74/ 20 (V8-* 4-19).....			1		535	2496
	76 20 (V8-* 4-20).....			1		535	6029
	74/ 40 (Six-* 4-19).....			1		535	1917
	76 40 (Six-* 4-20).....			1		535	6035
	74/ 40 (V8-* 4-19).....			1		535	2501
	76 40 (V8-* 4-20).....			1		535	6031
	74 80.....			1		535	1985
	75 80 (Six).....			1		535	1985
	76 80-90 (Six-Except Calif.).....			1		535	5987
4.227-2	EXTENSION KIT, Tail Pipe Side Exhaust						
	74 10 (Six).....	111		1		812	5806
	74 10 (V8).....			1		812	5808
4.227-3	ATTACHING PARTS, Extension To Tail Pipe						
	CLAMP..... 74 10 (Six).....		4.178	1		812	3147
	CLAMP..... 74 10 (V8).....			1		812	5780
4.230-1	CLAMP ASSEMBLY, Muffler To Tail Pipe Or Insulator (Incl. U-Bolts, Nuts, Washer And Saddle)						
	74/ 10-20-40 (258).....		4.178	AR		812	3147
	74/ 10-25-40 (360)(401).....		4.205	AR		812	4874
	74 80.....		4.178	1		812	3147
4.230-2	ATTACHING PARTS, Clamp To Muffler Insulator To Tail Pipe						
	U-BOLT..... 74/ 10-20-40 (258).....		4.178	AR		991	699
	U-BOLT..... 74/75 10-25-40 (360)(401).....		4.205	AR		400	4834
	U-BOLT..... 76 10 (360)(401).....			1		535	4473
	U-BOLT..... 76 20-40 (360)(401).....		4.205	1		400	4834
	U-BOLT..... 74 80.....		4.178	1		991	699

4.230

FUEL - EXHAUST - EMISSION

U-BOLT	75	80 (Six)	4.178	1	991 699
PLATE, Support	74/	10-20-40 (258)	4.230	AR	535 1266
PLATE, Support	74/	10-25-40 (360)(401)	4.230	AR	535 2503
PLATE, Support	74	80	4.230	1	535 1266
PLATE, Support	75	80 (Six)	4.230	1	535 1266
SADDLE	74/	10-20-40 (258)	4.178	AR	994 286
SADDLE	74/75	10-25-40 (360)(401)	4.195	AR	535 2492
SADDLE	76	10 (360)(401)	1	535 4474
SADDLE	76	360-401	1	535 2492
SADDLE	74	80	4.178	1	994 286
SADDLE	75	80 (Six)	4.178	1	994 286
WASHER, Lock	74/	10-20-40 (258)	17.820	AR	G120214
WASHER, Lock	74	80	17.820	2	G120214
NUT, Lock	74/	10-25-40 (360)(401)	25.039	AR	400 3587
NUT, Hexagon	74/	10-20-40 (258)	17.406	AR	G120376
NUT, Hexagon	75	10 (V8)	17.406	2	G120376
NUT, Hexagon	76	10 (360)(401)	2	400 3909
NUT, Hexagon	76	20-40 (360)(401)	17.406	2	G120376
NUT, Hexagon	74	80	17.406	2	G120376
NUT, Hexagon	75	80 (Six)	17.406	2	G120376
4.234-1 BRACKET, Tail Pipe Support					
76	10	1	535 4074
74	10 (258)	1	535 0974
75	10 (258-Used With Straight Exhaust Pipe)	1	535 4129
75	10 (V8-Used With Straight Exhaust Pipe)	1	535 4129
74/	20-40 (258)	1	535 1697
4.234-2 ATTACHING PARTS, Insulator To Body Bracket Or Frame					
SCREW, Tapping	75	17.672	1	G172455
SCREW, Tapping	74	80	17.672	1	G172455
SCREW, Tapping	75/	80 (V8)	17.671	2	G9424824
BOLT, Hexagon	76	10	17.	1	G180081
NUT, Hexagon	74/75	10-20-40 (258)	17.412	1	G271187
NUT, Hexagon	76	10	17.	1	G9413447
4.234-3 INSULATOR, Tail Pipe Support (Rear)					
74/	10-20-40 (258)	1	639 024
74	10-25-40 (360)(401)	1	535 3052
75/	20-40 (V8)	1	535 3052
74	80	4.219	1	944 748
75	80 (Six)	4.219	1	944 748
75	80 (V8)	4.219	1	535 4074
4.234-4 ATTACHING PARTS, Insulator To Bracket					
NUT, Hexagon	74/	10-20-40 (258)	17.412	1	G271187
4.234-5 SPACER, Tail Pipe					
74	20-40 (Used With Flex-N-Gate Step Bumper)	1	535 4059
4.234-5a ATTACHING PARTS, Spacer To Bracket					
SCREW, Machine	74	20-40 (Used With Flex-N-Gate Step Bumper)	17.629	1	812 1298
NUT, Hexagon	74	20-40 (Used With Flex-N-Gate Step Bumper)	17.412	1	G271184
4.234-6 CLAMP, Tail Pipe To Hanger					
76	10	216	4.205	1	319 5233
74	80	4.195	1	941 324
75	80 (Six)	4.195	1	941 324
76	80-90 (Six)	1	319 5232
75	80 (V8)	216	4.205	1	319 5233
76	80-90 (V8)	216	4.205	1	319 5233
4.234-7 ATTACHING PARTS, Clamp To Hanger					
BOLT, Hexagon	74	80	17.038	1	G181620
BOLT, Hexagon	75	80 (Six)	17.038	1	G181620
BOLT, Hexagon	76	80-90	17.038	4	G180079
SCREW, Taprite	75	80 (V8)	10.340	2	400 5063

FUEL - EXHAUST - EMISSION

4.385

	PLATE	74	80.....	2	803 681
	PLATE	75	80 (Six).....	1	803 681
	PLATE	75	80 (V8-With 2 Body Mounting Holes).....	1	535 4544
	PLATE	75	80 (V8-With 4 Body Mounting Holes).....	1	535 4129
	SPACER	74	80.....	1	668 425
	SPACER	75	80 (Six).....	1	668 425
	BRACKET	76	80-90.....	1	535 5402
	NUT, Hexagon.....	74	80.....	17.412	1	G271187
	NUT, Hexagon.....	75	80 (Six).....	17.412	1	G271187
	NUT, Hexagon.....	76	80-90.....	17.412	4	G271184
4.234-8	ATTACHING PARTS, Tail Pipe To Support Bracket					
	BOLT, Hexagon	74/	10-20-40 (258).....	17.038	1	G181595
	SCREW, Machine.....	74/	10-25-40 (360)(401).....	17.629	1	812 1298
	WASHER, Plain.....	74/	10-20-40 (258).....	17.814	1	G120393
	NUT, Hexagon.....	74/	10-20-40 (258).....	17.412	1	G271187
	NUT, Hexagon.....	74/	10-25-40 (360)(401).....	3.303	1	400 1457
4.305-1	SWITCH, Directional Lever And Automatic Speed Control					
	75	10-20-40 (V8)	3.324	1	322 6524
4.330-1	HARNESS, Automatic Speed Control Wiring					
	75	10-20-40 (V8)	1	545 4320
4.330-3	RELAY, Automatic Speed Control					
	75	10-20-40.....	1	812 5976
4.330-5	INSULATOR, Automatic Speed Control Harness (Directional Lever Harness Connector)					
	75/	10-20-40 (V8)	3.325	1	319 8786
4.330-4	FUSE, Automatic Speed Control Harness					
	75	10-20-40 (2.5 Amp.)	3.155	1	812 5975
4.335-1	REGULATOR, Automatic Speed Control					
	76	1	322 6811
	75	10-20-40 (V8)	1	319 7883
4.364-1	PLATE, Regulator Mounting To Splash Apron					
	75/	10-20-40 (V8)	1	545 4317
4.364-2	ATTACHING PARTS, Plate To Splash Apron					
	BOLT, Hexagon	75/	10-20-40 (V8)	23.402	2	400 4504
4.367-1	HOSE, Automatic Speed Control Vacuum (Bulk-Order In Feet)					
	75/	10-20-40 (V8) ... (7/32" I.D.)	22.050	AR	812 5813
	75/	10-20-40 (V8) ... (9/32" I.D.)	22.050	AR	812 5814
4.367-2	TEE, Air Pump Vacuum Hose					
	75/	10-20-40 (V8)	1	975 940
4.367-3	CONNECTOR, Vacuum Hose					
	75/	10-20-40 (V8)	22.053	1	960 498
4.367-4	FASTENER, Automatic Speed Control Vacuum Hose					
	75/	10-20-40 (V8)	3.196	3	318 1008
4.380-1	BELLOWS, Automatic Speed Control Vacuum Servo					
	75/	10-20-40 (V8)	1	319 4135
4.380-2	ATTACHING PARTS, Bellows To Bracket					
	WASHER, Lock	75/	10-20-40 (V8)	17.820	1	G120380
	NUT, Hexagon.....	75/	10-20-40 (V8)	17.406	1	G120375
4.385-1	BRACKET, Automatic Speed Control Vacuum Servo Bellows Mounting					
	75/	10-20-40 (V8)	1	321 8299
4.385-2	SUPPORT, Bellows Mounting Bracket					
	75/	10-20-40 (V8)	1	321 8325

4.390

FUEL - EXHAUST - EMISSION

4.390-1	CHAIN, Automatic Speed Control Bellows To Shaft						
	75/7	10-20-40 (V8)	1	321	8320	
4.390-2	PIN, Automatic Speed Control Chain Clevis (To Carburetor)						
	75/7	10-20-40 (V8)	1	319	4849	
4.390-3	ATTACHING PARTS, Automatic Speed Control Chain Clevis Pin						
	PIN, Clevis	75/7	10-20-40 (V8)	4.057	1	400 0793
	WASHER, Plain	75/7	10-20-40 (V8)	17.814	1	G446152
4.500-1	PUMP, Exhaust Emission Air						
	74-75		1	322	3124	
	76		1	322	4465	
4.500-2	ATTACHING PARTS, Pump To Mounting Bracket						
	BOLT, Hexagon	74	SIX (RHD)... (4-3/4" Long)	17.038	1	G180768
	BOLT, Hexagon	75/7	SIX...(1-1/8" Long)	17.038	1	G180123
	BOLT, Hexagon	74/7	(1" Long)	17.629	AR	G274195
	BOLT, Hexagon	74	V8...(4-3/4" Long)	17.038	1	G450517
	WASHER, Plain	76		17.814	1	400 1104
	WASHER, Lock	74	V8	17.820	1	G120382
	WASHER, Lock	75	V8	10.260	1	400 3803
	WASHER, Flat	75/7	SIX	10.455	1	400 4711
	NUT, Hexagon	74	SIX (RHD)	10.260	1	400 3909
	NUT, Hexagon	74/7	V8	17.406	1	G120377
4.500-3	ATTACHING PARTS, Air Pump To Intake Manifold						
	STUD	75/7	SIX (LPS)	1	322	4462
	STUD	75/7	SIX (WPS)	1	322	4461
	WASHER, Lock	75/7	SIX	10.260	1	400 3803
	NUT, Hexagon	75/7	SIX	10.260	1	400 3909
4.510-1	FAN, Exhaust Emission Air Pump Filter						
	74	V8	1	812	2982	
4.510-2	TUBE, Exhaust Emission Air Pump Exhaust						
	74	V8	1	448	5481	
4.515-1	BRACE, Exhaust Emission Air Pump Support						
	74-75	V8 (WPS)	1	321	5107	
	76	V8 (WPS)	1	322	8504	
4.515-2	ATTACHING PARTS, Brace To Air Pump						
	BOLT, Hexagon	74-75	V8 (WPS)	17.629	1	G274195
4.520-1	BRACKET, Exhaust Emission Air Pump Mounting						
	74	SIX (RHD)	1	318	2267	
	74	(Front Pivot) SIX (LHD)	1	321	8635	
	74	(Rear Bracket) SIX (LHD)	1	321	8637	
	75	SIX (LPS)	1	322	4463	
	76	SIX (LPS)	1	322	7411	
	75/7	SIX (WPS)	1	322	4695	
	74-75	V8 (LPS)	1	318	1667	
	76	V8 (LPS)	1	812	6553	
	74-75	V8 (WPS)	1	321	5102	
	76	V8 (WPS)	1	322	7683	
4.520-2	ATTACHING PARTS, Bracket To Cylinder Head						
	STUD	75/7	V8 (LPS)	17.	1	G111318
	SCREW, Machine	74	SIX (RHD)	17.626	2	G451977
	BOLT, Hexagon	74/7	V8 (LPS)...	17.038	AR	G180122
	BOLT, Hexagon	74	V8 (LPS)...	17.038	1	G180120
	WASHER, Lock	74/7	V8 (LPS)	10.260	AR	400 3803
	WASHER, Plain	74/75	V8 (LPS)	17.814	AR	400 1161
	WASHER, Plain	75/7	V8	AR	400 1829
	NUT, Flange	75/7	SIX (WPS)	10.004	1	400 4563
	NUT, Hexagon	75/7	V8 (LPS)	1	400 3869

FUEL - EXHAUST - EMISSION

4.539

4.520-3	ATTACHING PARTS, Bracket To Power Steering Bracket BOLT, Hexagon 74/ V8 (WPS)	17.629	1	G274195
4.520-6	ATTACHING PARTS, Front Bracket To Air Pump BOLT, Hexagon 74 SIX (RHD)	17.629	1	G274195
4.520-7	ATTACHING PARTS, Rear Bracket To Air Pump BOLT, Hexagon 74 SIX (LHD)	10.260	1	400 4009
4.520-8	ATTACHING PARTS, Front And Rear Bracket To Air Pump BOLT, Hexagon 74 SIX (LHD) WASHER, Lock 74 SIX (LHD)	17.038 10.260	1 1	G454497 400 3803
4.520-9	ATTACHING PARTS, Front Pivot Bracket To Rear Mounting Bracket BOLT, Hexagon 74 SIX (LHD) WASHER, Lock 74 SIX (LHD) WASHER, Bite 74 SIX (LHD)	17.038 10.260 10.003	2 1 1	G180122 400 3803 310 8995
4.520-10	ATTACHING PARTS, Front Bracket To Front Cover Stud NUT, Hexagon 74 SIX (LHD) WASHER, Plain 74 SIX (LHD) WASHER, Bite 74 SIX (LHD)	17.406 1.067 10.455	1 1 1	G120377 400 3938 400 4711
4.525-1	BRACE, Exhaust Emission Air Pump Reinforcement 74/ V8 (LPS)		1	319 7132
4.525-2	ATTACHING PARTS, Brace To Pump Mounting Bracket BOLT, Hexagon 74 V8 (LPS) BOLT, Hexagon 75/ V8 (LPS) WASHER, Lock 74 V8 (LPS) NUT, Hexagon 74 V8 (LPS) NUT, Hexagon 75/ V8 (LPS)	17.038 10.300 17.820 17.406 3.303	2 2 2 2 2	G181595 G180077 G120214 G120368 400 1457
4.525-3	ATTACHING PARTS, Brace To Water Pump Stud WASHER, Plain 76 V8 (LPS) NUT, Hexagon 74/ V8 (LPS)		AR 1	400 1829 400 3869
4.530-1	SUPPORT, Exhaust Emission Air Pump Mounting Bracket 74 SIX (LHD)		1	321 8636
4.530-5	ATTACHING PARTS, Bracket To Cylinder Block (Front) BOLT, Hexagon 74 SIX (LHD) SPACER 74 SIX (LHD) WASHER, Lock 74 SIX (LHD)	17.038 10.260	1 1 1	G189304 321 8942 400 3803
4.530-6	ATTACHING PARTS, Bracket To Cylinder Block (Side) BOLT, Hexagon 74 SIX (LHD) WASHER, Lock 74 SIX (LHD) WASHER, Plain 74 SIX (LHD)	17.038 10.260 17.814	1 1 1	G180123 400 3803 400 1161
4.535-1	STRAP, Exhaust Emission Air Pump To Compressor 74 SIX (RHD)		1	999 012
4.535-2	ATTACHING PARTS, Strap To Cylinder Block BOLT, Hexagon 74 SIX (RHD) WASHER, Lock 74 SIX (RHD) WASHER, Plain 74 SIX (RHD)	17.038 17.820 17.814	2 2 1	G180123 G120382 G120394
4.538-1	MANIFOLD, Exhaust Emission Air Injection 74 SIX 75 SIX 74/ (Left) V8 74/ (Right) V8		1 1 1 1	321 9092 322 4995 322 0130 322 0118
4.539-1	GASKET, Exhaust Emission Air Injection Manifold 74/ V8	3.001	14	44 042

4.540

FUEL - EXHAUST - EMISSION

4.540-1	TUBE, Exhaust Emission Air Injection Manifold				
74	SIX (Short)	2	318	1223	
75/	SIX (Short)	2	322	4179	
74	SIX (Long)	3	318	1220	
75/	SIX (Long)	4	322	4178	
74/	V8	7	318	9267	
4.557-1	SUPPORT, Exhaust Emission Backfire				
75/	SIX	1	322	5893	
4.557-4	CLAMP, Bracket To Backfire Valve				
75/	SIX	1	320	3079	
4.558-1	VALVE, Exhaust Emission Backfire				
74/	SIX	1	322	3634	
74/	V8	1	322	3271	
4.565-1	HOSE, Exhaust Emission Backfire Valve To Tee Or Air Injection Manifold				
74	SIX...(Both Legs Approx. 2-1/4" Long)	1	322	3635	
74	SIX...(One Leg Approx. 2-1/4" Long And Other 4-3/4" Long) (Use 322 3635)	1	812	5084	
75/	SIX	1	322	5894	
4.566-1	CLAMP, Exhaust Emission Backfire Valve (At Tee Or Manifold)	17.108	2	320	3077
74/	SIX				
4.566-2	CLAMP, Exhaust Emission Backfire Valve (At Valve)	17.108	2	320	3077
74	SIX				
4.578-1	HOSE, Exhaust Emission Backfire Valve To Fitting (Bulk-Order In Feet)	4.701	AR	320	3440
74	SIX				
4.578-2	STRAP, Diverter Valve Hose				
74	3.196	2	318	1008
75	3.165	1	322	3227
4.585-1	HOSE, Exhaust Emission Air Pump To Backfire Valve				
74	SIX	1	322	3636	
75/	SIX (LPS)	1	322	5895	
75/	SIX (WPS)	1	322	5896	
74/	V8 (LPS)	1	322	3267	
74	V8 (WPS)	1	322	3268	
75/	V8 (WPS)	1	535	4469	
4.586-1	CLAMP, Exhaust Emission Air Pump To Backfire Valve Hose	17.108	AR	320	3077
74/				
4.600-1	HOSE, Exhaust Emission Backfire Valve To Injection Manifold				
74/	(Left Bank) V8	1	322	3270	
74/	(Right Bank) V8	1	322	3269	
4.600-2	CLAMP, Exhaust Emission Backfire Valve To Injection Manifold Hose				
74/	(Left Bank At Valve) V8	17.108	2	G451200	
74/	V8	17.108	2	320	3077
4.610-1	PULLEY, Exhaust Emission Air Pump				
74	SIX (LAC)...(5-1/2" Dia.)	1	318	9870	
74	SIX (LAC)...(7" Dia.)	1	321	8657	
74	SIX (WAC)...(4-1/2" Dia.)	1	318	9717	
74	SIX (WAC)...(6" Dia.)	1	321	8654	
75/	SIX (LPS)	1	322	4464	
75/	SIX (WPS)	1	322	6938	
74/75	V8 (LPS)	1	318	9870	
74/75	V8 (WPS)...(4-1/2" Dia.)	1	318	9717	
75	V8 (WPS)...(5" Dia.)	1	322	5654	
76	10-25-40 (V8-LHDC)	1	322	8286	
76	10-25-40 (V8-WHDC)	1	535	5780	
76	83-90 (V8-Except Calif.)	1	322	8286	
76	83-90 (V8-W3ST-Calif.)	1	535	6166	
76	90 (V8-WHT-Calif.)	1	322	8286	

FUEL - EXHAUST - EMISSION

4.700

4.610-2	ATTACHING PARTS, Pulley To Pump			
	BOLT, Hexagon 74/	1.164	3	400 1730
	SCREW, Machine 74 SIX	17.626	3	G9421781
4.612-1	BELT, Crankshaft To Exhaust Emission Air Pump			
	75	10.455	1	999 950
	74 SIX (LHD) . . . (36-1 2" Circumference)		1	322 3004
	74 10-20-40 (LHD-Six) . . . (33-1/2" Circumference)	4.615	1	322 6559
	74 SIX (RHD)	2.016	1	322 3006
	76 80-90 (Six-LPS)		1	322 6936
	74 V8	4.623	1	943 251
	76 10-20-40 (V8)		1	322 7692
	76 80-90 (V8-Except Calif.)		1	322 7692
	76 80-90 (V8-Calif. -WMT)		1	535 6167
	76 90 (V8-Calif. -WHT)		1	322 7692
4.615-1	BELT, Power Steering Pump To Exhaust Emission Air Pump			
	74/75 V8 (Used With 4-5 8" Pulley)		1	322 3005
	74/75 V8 (Used With 5" Pulley)	2.016	1	322 5957
	76 10-20-40 (V8)		1	322 8287
	76 80-90 (Six-Calif.)		1	322 6939
	76 80-90 (V8-Except Calif.)		1	322 8287
	76 90 (V8-Calif. -WHT)		1	322 8287
	76 80-90 (V8-Calif. -WMT)		1	535 6168
4.620-1	BELT, Crankshaft To Air Pump To Compressor			
	74 V8 (LPS)	4.620	1	999 597
4.621-1	CLIP, Exhaust Emission Backfire Valve To Injection Manifold Hose			
	74/75 (Left Hose) V8	3.165	1	400 3838
4.621-2	BRACKET, Injection Manifold Hose Clip			
	74/75 V8		1	322 3266
4.621-3	ATTACHING PARTS, Clip To Bracket			
	SCREW 74 V8 (Use 318 9013)		1	400 0478
	NUT, Hexagon 74 V8	17.426	1	G445446
4.621-4	ATTACHING PARTS, Bracket To Thermostat Housing Stud			
	STUD 74 V8	2.102	1	318 4637
	NUT, Hexagon 74/75 V8	17.406	1	G120368
4.622-1	HOSE, Exhaust Emission Backfire Valve Triqger To Carburetor Vacuum Diaaphraam (Bulk-Order In Feet)			
	74 V8	4.701	AR	320 3440
	75 V8	4.701	AR	812 5812
4.700-1	VALVE, Exhaust Gas Recirculating			
	74/ (176 Stamped On Face Of Valve)		1	321 9052
	74/ (472 Stamped On Face Of Valve)		1	322 3981
	74/ (881 Stamped On Face Of Valve)		1	321 8739
	75/ (471 Stamped On Face Of Valve)		1	322 3980
	76 (589 Stamped On Face Of Valve)		1	322 5951
4.700-2	GASKET, Exhaust Gas Recirculating Valve And Sensor			
	74/		AR	322 1283
4.700-3	ATTACHING PARTS, Exhaust Gas Recirculating Valve At Manifold			
	BOLT, Hexagon 74/	17.038	2	G180078
	WASHER, Lock 74/	17.820	2	G120214
	STUD 74/	17.718	2	G192423
	NUT, Hexagon 74/	17.406	2	G120368
4.700-4	SENSOR, Exhaust Gas Recirculating Valve At Manifold			
	74/ (322 3408 Stamped On Sensor)		1	322 3408
	75/ (322 3407 Stamped On Sensor)		1	322 3407
	75 (322 3999 Stamped On Sensor)		1	322 3999
	76 (322 5950 Stamped On Sensor)		1	322 5950
	76 (322 3409 Stamped On Sensor)		1	322 3409
	76 (322 8836 Stamped On Sensor) . . . (Incl. Bracket)		1	322 8836
	76 (322 8838 Stamped On Sensor) . . . (Incl. Bracket)		1	322 8838

4.700

FUEL - EXHAUST - EMISSION

4.700-5	BRACKET Exhaust Gas Recirculating Back Pressure Sensor				
	75 SIX	1		322 4016	
	74 V8 (WAT-Except 46)	1		322 3410	
	75/ V8 (WCFE)	1		322 3410	
4.700-6	ATTACHING PARTS Sensor Bracket				
	SCREW, Hexagon 74/	17.670	2	G170978	
4.700-7	PLATE, Exhaust Gas Recirculating Valve Restrictor				
	75/ (2 Stamped On Plate)		1	322 5242	
	75/ (4 Stamped On Plate)		1	322 5144	
	76 (5 Stamped On Plate)		1	322 5145	
	76 (6 Stamped On Plate)		1	322 5956	
	76 (7 Stamped On Plate)		1	322 6657	
	76 (8 Stamped On Plate)		1	322 8338	
4.700-8	VALVE, Exhaust Gas Recirculating Delay				
	75/ 10-20-40 (V8)		1	535 5276	
4.700-9	COVER, Exhaust Gas Recirculation Ports				
	75/ Export (LEGR)		1	321 9665	
4.700-10	ATTACHING PARTS, Cover To Manifold				
	BOLT, Hexagon 75/ Export	10.300	2	G180077	
	WASHER, Lock 75/ Export	17.820	2	G120214	
4.701-1	HOSE Vacuum				
	74 (.156 I.D. x .344 O.D.)...(Bulk-Order In Feet)		AR	320 3440	
	74 (.218 I.D. x .406 O.D.)...(Bulk-Order In Feet)	22.050	AR	320 2249	
	74/ (With Flared End .219 I.D. x .395 O.D.)...(13" Lona).....		AR	322 5621	
	74 (With Flared End .219 I.D. x .395 O.D.)...(28" Lona).....		AR	321 9169	
	75 (.218 I.D. x .406 O.D.)...(Bulk-Order In Feet)	22.050	AR	812 5813	
	75/ (.156 I.D. x .344 O.D.)...(Bulk-Order In Feet-Orange)	3.051	AR	812 5995	
	75/ (.156 I.D. x .344 O.D.)...(Bulk-Order In Feet-Black)		AR	812 5812	
	75/ (With Flared End .219 I.D. x .395 O.D.)...(8" Lona).....		1	322 8056	
	75/ (With Flared End .219 I.D. x .395 O.D.)...(28" Lona).....		AR	322 5622	
4.701-2	TEE, Vacuum Hose				
	74/ (3-Way)...(3 Outlets-.120 Dia.)	3.050	1	321 0891	
	74/ (4-Way)		1	321 9618	
4.701-3	CONNECTOR, Carburetor Nipple To Vacuum Hose				
	74/75 V8	29.294	1	381 934	
4.702-1	TUBE, Exhaust Gas Recirculating Valve Hose To Vacuum Ported Switch Hose				
	74 SIX (* 4-5)		1	322 3263	
	74 SIX (* 4-6)		1	322 5181	
	75/ SIX		1	322 5552	
4.702-2	TUBE, Vacuum Ported Switch Hose				
	74 SIX	3.050	1	535 1606	
4.702-3	TUBE, Diverter Valve Tee To Coolant Temperature Override Switch Hose				
	74/ SIX		1	535 2832	
4.703-1	TUBE, Vacuum Ported Switch Hose To Carburetor Hose				
	74 SIX (* 4-5)	4.702	1	322 3264	
	74 SIX (* 4-6)		1	322 5179	
	75/ SIX		1	322 5551	
4.703-2	CLIP, Vacuum Tube Connecting				
	74/ ("S" Type)	8.101	AR	316 8875	
	74/ ("C" Type)	3.048	AR	313 7319	
	75/ (Holds 5/16" O.D. Tubing)	23.028	AR	400 0021	
4.703-3	STRAP, Hose (Nylon Tie)				
	74	3.196	AR	318 1008	
	75/	3.165	AR	322 3227	

FUEL - EXHAUST - EMISSION

4.704

4.704-1 SWITCH, Vacuum Ported

IN CYLINDER BLOCK DRAIN HOLE

74/	SIX (321 6448 Molded On Switch)	3.050	1	321 6448
74/75	SIX (321 8940 Molded On Switch)	1	321 8940
75/	SIX (322 5912 Molded On Switch)	1	322 5912
75/	SIX (322 6361 Molded On Switch)	1	322 6361
76	SIX (322 8894 Molded On Switch)	1	322 8894
76	SIX (322 8288 Molded On Switch)	1	322 8288

IN MANIFOLD

74	V8 (321 8940 Molded On Switch)	1	321 8940
74	V8 (321 0853 Molded On Switch)	3.050	1	321 0853
75/	V8 (322 5912 Molded On Switch)	1	322 5912
75/	V8 (322 6361 Molded On Switch)	1	322 6361
76	V8 (322 8894 Molded On Switch)	1	322 8894
76	V8 (322 8288 Molded On Switch)	1	322 8288
75/	V8 (321 6448 Molded On Switch)	3.050	1	321 6448

4.704-2 TEE Vacuum Ported Switch And Heater Hose Nipple To Manifold

74	V8	17.754	1	G444150
----	----------	--------	---	---------

FUEL - EXHAUST - EMISSION