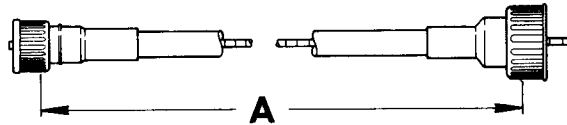


SPECIAL INFORMATION

The Engine Build Code Number, the Vehicle Identification Number and the information provided on the Trim Plate are often necessary when determining the proper replacement parts for your vehicle. For their location refer to the General Information Section found at the front of this catalog.

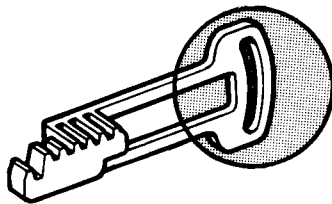
NOTES

SPEEDOMETER CABLE CHART

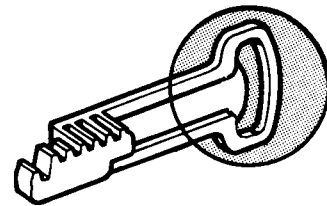


CABLE (Incl. Core)	CORE	LENGTH "A"
998 850	998 950	80"
998 848	998 954	64.5"
998 849	998 952	104"
998 851	998 948	69"
535 1981	535 1980	29"
535 1775	998 954	64.5"
535 1778	998 946	60"
535 3092		90"

- 3-1 Used on 1974 20-40 less Pick-Up Box Cargo Lamp.
- 3-2 Used on 1974 20-40 with Pick-Up Cargo Lamp.
- 3-3 Used with Equalizer Trailer Hitch.
- 3-4 Used less Equalizer Trailer Hitch.
- 3-5 Used on 1974 10 less rear Domelamp.
- 3-6 Used on 1974 10 with rear Domelamp.
- 3-7 Used on Vehicles with marking "Unleaded Fuel Only" on Speedometer Dial.
- 3-8 Used on Vehicles that do not have "Unleaded Fuel Only" on Speedometer Dial.
- 3-9 Used on 1974 Vehicles with a 1974 Trim Code.
- 3-10 Used on 1974 Vehicles with a 1975 Trim Code.
- 3-11 Refer to Type 1 Illustration below.
- 3-12 Refer to Type 2 Illustration below.



TYPE 1



TYPE 2

ELECTRICAL - INSTRUMENTS

- 3-13 Door does not have Holes for adjusting Headlamp Bulb.
- 3-14 Door has Holes for adjusting Headlamp Bulb.
- 3-15 Parking Lamp Cable has double Connector.
- 3-16 Parking Lamp Cable has triple Connector.
- 3-17 Used with Voltmeter that has three Terminals.
- 3-18 Used with Voltmeter that has four Terminals.

ELECTRICAL CHART INDEX

ALTERNATOR

	ILLUSTRATION PAGE	CHART PAGE
8AL2015K.....	Gr 3 - C 2	Gr 3 - C 3
8AL2016K.....	Gr 3 - C 2	Gr 3 - C 3
8AL2025F.....	Gr 3 - C 4	Gr 3 - C 5
8AL2026F.....	Gr 3 - C 4	Gr 3 - C 5
8AL2031F.....	Gr 3 - C 4	Gr 3 - C 5
8AL2032K.....	Gr 3 - C 4	Gr 3 - C 5
8AL2051F.....	Gr 3 - C 6	Gr 3 - C 7
8AL2052K.....	Gr 3 - C 6	Gr 3 - C 7
8AL2053L.....	Gr 3 - C 6	Gr 3 - C 7
10300AA.....	Gr 3 - C 9a	Gr 3 - C 9b
10300DA.....	Gr 3 - C 9a	Gr 3 - C 9b
1100927.....	Gr 3 - C 8	Gr 3 - C 9
1100544.....	Gr 3 - C 8	Gr 3 - C 9
1100928.....	Gr 3 - C 8	Gr 3 - C 9
1102465.....	Gr 3 - C 8	Gr 3 - C 9
1102877.....	Gr 3 - C 8	Gr 3 - C 9
1102878.....	Gr 3 - C 8	Gr 3 - C 9
1102879.....	Gr 3 - C 8	Gr 3 - C 9
1102894.....	Gr 3 - C 8	Gr 3 - C 9
D5AF10346BA.....	Gr 3 - C 9c	Gr 3 - C 9d
D6FF10300BA.....	Gr 3 - C 9c	Gr 3 - C 9d
D6FF10300CA.....	Gr 3 - C 9c	Gr 3 - C 9d
IDJ-4001E.....	Gr 3 - C 18	Gr 3 - C 19
IDJ-4001F.....	Gr 3 - C 18	Gr 3 - C 19
IDJ-4001G.....	Gr 3 - C 18	Gr 3 - C 19

DISTRIBUTOR

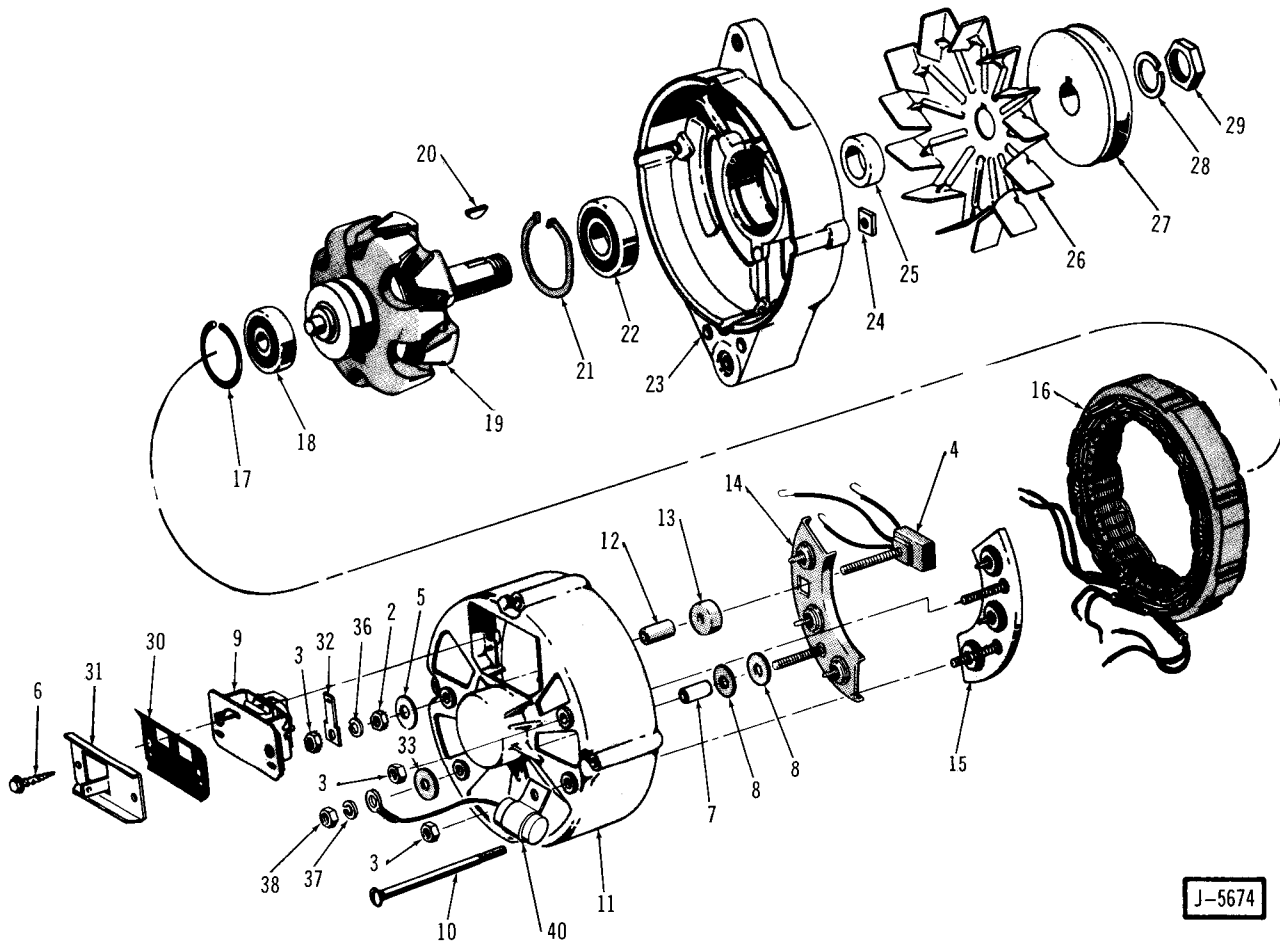
	ILLUSTRATION PAGE	CHART PAGE
1110529.....	Gr 3 - C 12	Gr 3 - C 13
1112112.....	Gr 3 - C 16	Gr 3 - C 17
1112179.....	Gr 3 - C 16	Gr 3 - C 17
1112215.....	Gr 3 - C 16	Gr 3 - C 17
IDJ-4001.....	Gr 3 - C 18	Gr 3 - C 19
IDJ-4001A.....	Gr 3 - C 18	Gr 3 - C 19
IDJ-4001B.....	Gr 3 - C 18	Gr 3 - C 19
IDJ-4001C.....	Gr 3 - C 18	Gr 3 - C 19
IDJ-4002B.....	Gr 3 - C 14	Gr 3 - C 15
IDJ-4002C.....	Gr 3 - C 14	Gr 3 - C 15

GENERATOR

	ILLUSTRATION PAGE	CHART PAGE
AL-GJP-7402B.....	Gr 3 - C 10	Gr 3 - C 11
AL-GJP-7402S.....	Gr 3 - C 10	Gr 3 - C 11

STARTING MOTOR

	ILLUSTRATION PAGE	CHART PAGE
321 2235.....	Gr 3 - C 20	Gr 3 - C 19



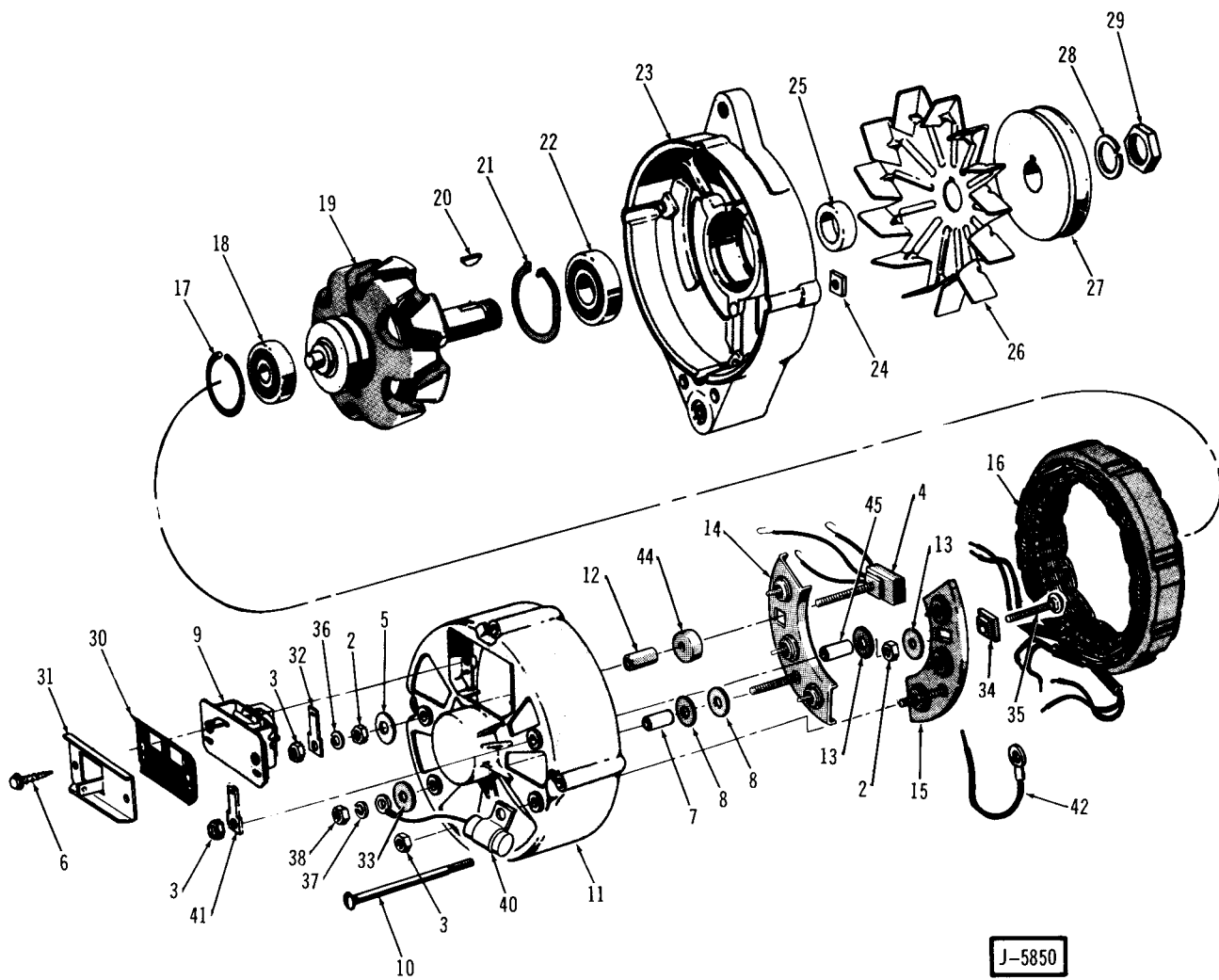
J-5674

ALTERNATOR

SEE CHART FACING PAGE ►

KEY NO.	DESCRIPTION	PAKS CODE	GROUP NO.	PER CAR	PART NO.	PART NO.
					MOTO-ROLA 8AL 2015K	MOTO-ROLA 8AL 2016K
1	ALTERNATOR (Less Pulley)		3.016	1	448 9410	448 9410
3	NUT		17.412	6	G271166	G271166
4	TRIO ASSY. (Diode).....		3.016	1	812 5026	812 5026
5	WASHER		3.016	3	320 4158	320 4158
6	SCREW		17.671	2	G456794	G456794
7	INSULATOR.....		3.016	1	448 9449	448 9449
8	WASHER		3.016	2	448 9450	448 9450
9	BRUSHES	50	3.016	1	320 4152	320 4152
10	BOLT		3.016	4	320 5053	320 5053
11	HOUSING		3.016	1	448 9403	448 9403
12	INSULATOR.....		3.016	2	448 9448	448 9448
13	SPACER		3.016	1	812 5790	812 5790
14	DIODE (Positive)		3.016	1	448 9405	448 9405
15	DIODE (Negative).....		3.016	1	448 9404	448 9404
16	STATOR		3.016	1	320 5227	320 5227
17	RETAINER.....		3.016	1	320 4150	320 4150
18	BEARING		3.016	1	320 4146	320 4146
19	ROTOR		3.016	1	320 5054	320 5054
20	KEY		17.344	1	G103905	G103905
21	WASHER		3.016	1	320 4144	320 4144
22	BEARING		3.016	1	313 9988	313 9988
23	HOUSING		3.016	1	320 4142	320 4142
24	NUT		17.414	4	G120611	G120611
25	SPACER		3.017	1	320 4141	320 4141
26	FAN.....		3.017	1	320 4140	320 4140
27	PULLEY.....		3.017	1	320 4139	320 4139
28	WASHER		17.820	1	G103325	G103325
29	NUT.....		3.017	1	320 4160	320 4160
30	SHIELD	50	3.016	1	320 7918	320 7918
31	PLATE (Ground)		3.016	1	448 8549	448 8549
32	TERMINAL, Spade (Auxiliary)		3.016	1	448 8550	448 8550
33	WASHER		3.016	1	448 9451	448 9451
37	WASHER		17.820	1	G120380	G120380
38	NUT		17.412	1	G271172	G271172
40	CAPACITOR (Output Terminal)		3.016	1	318 1090	318 1090
41	TERMINAL, Spade (Auxiliary)		3.016	1
42	CAPACITOR (Regulator Terminal)		15.320	1	812 5558	812 5558

◀ SEE ILLUSTRATION FACING PAGE

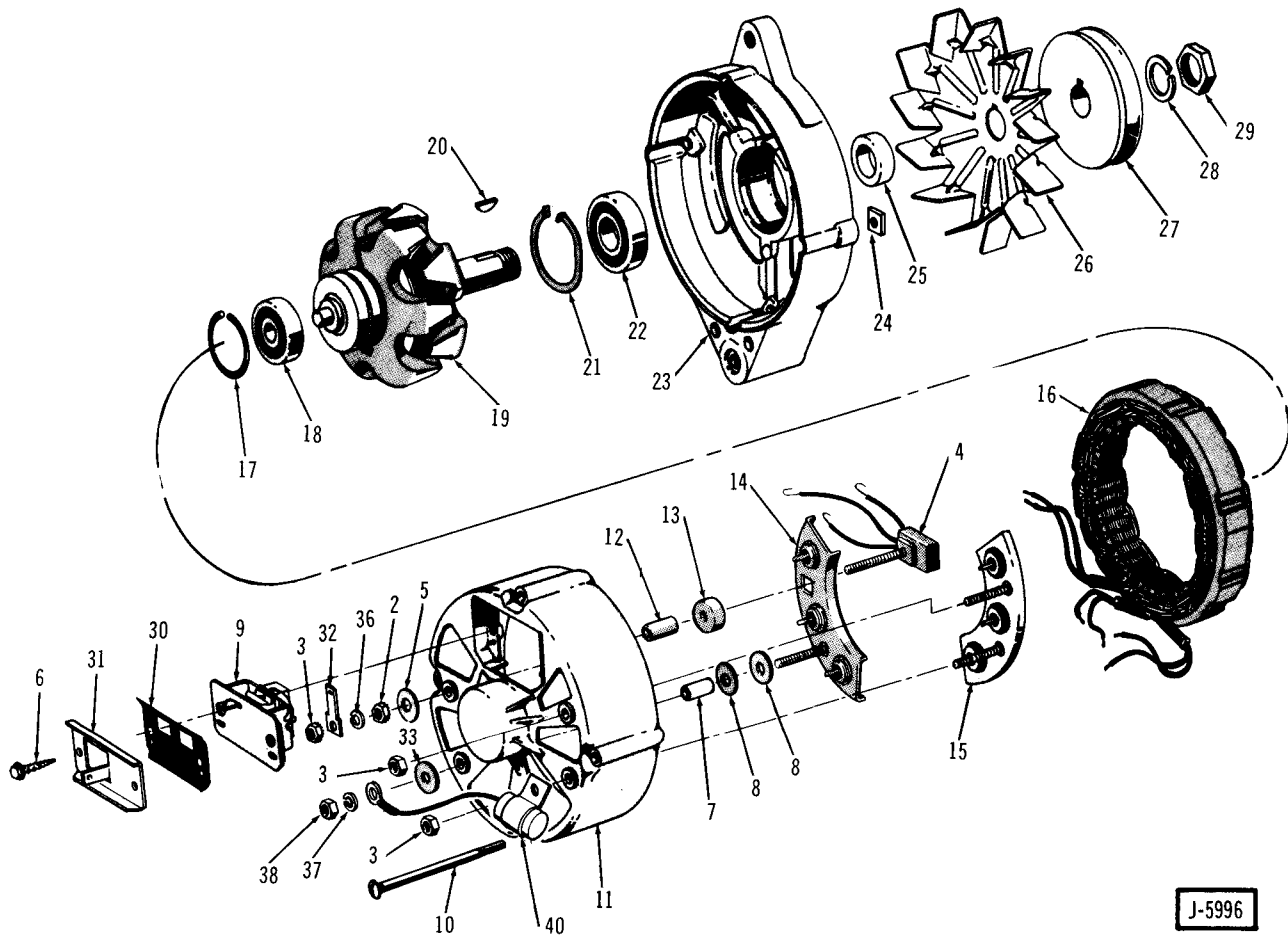


ALTERNATOR

SEE CHART FACING PAGE ►

KEY NO.	DESCRIPTION	PAKS CODE	GROUP NO.	PER CAR	PART NO.	PART NO.	PART NO.	PART NO.
					MOTO-ROLA	MOTO-ROLA	MOTO-ROLA	MOTO-ROLA
					8AL 2025F	8AL 2026F	8AL 2031F	8AL 2032K
1	ALTERNATOR (Less Pulley)		3.016	1	448 9410	448 9410	812 2449	812 2449
2	NUT		17.412	1	G120361	G120361	G120361	G120361
3	NUT		17.412	6	G271166	G271166	G271166	G271166
4	TRIO ASSY. (Diode)		3.016	1	812 5026	812 5026	812 5026	812 5026
5	WASHER		3.016	3	320 4158	320 4158	320 4158	320 4158
6	SCREW		17.671	2	G456794	G456794	G456794	G456794
7	INSULATOR		3.016	1	448 9449	448 9449	448 9449	448 9449
8	WASHER		3.016	1	448 9450	448 9450	448 9450	448 9450
9	BRUSHES 50		3.016	1	320 4152	320 4152	320 4152	320 4152
10	BOLT		3.016	4	320 5053	320 5053	320 5053	320 5053
11	HOUSING		3.016	1	448 9403	448 9403	448 9403	448 9403
12	INSULATOR		3.016	2	448 9448	448 9448	448 9448	448 9448
13	SPACER		3.016	1	812 5790	812 5790	812 5790	812 5790
14	DIODE (Positive)		3.016	1	448 9405	448 9405	448 9405	448 9405
15	DIODE (Negative)		3.016	1	448 9404	448 9404	812 3146	812 3146
16	STATOR		3.016	1	812 1301	812 1301	812 1301	320 5227
17	RETAINER		3.016	1	320 4150	320 4150	320 4150	320 4150
18	BEARING		3.016	1	320 4146	320 4146	320 4146	320 4146
19	ROTOR		3.016	1	320 4145	320 4145	320 4145	320 4145
20	KEY		17.344	1	G103905	G103905	G103905	G103905
21	WASHER		3.016	1	320 4144	320 4144	320 4144	320 4144
22	BEARING		3.016	1	313 9988	313 9988	313 9988	313 9988
23	HOUSING		3.016	1	320 4142	320 4142	320 4142	320 4142
24	NUT		17.414	4	G120611	G120611	G120611	G120611
25	SPACER		3.017	1	320 4141	320 4141	320 4141	320 4141
26	FAN		3.017	1	320 4140	320 4140	320 4140	320 4140
27	PULLEY		3.017	1	320 4139	320 4139	320 4139	320 4139
28	WASHER		17.820	1	G103325	G103325	G103325	G103325
29	NUT		3.017	1	320 4160	320 4160	320 4160	320 4160
30	SHIELD 50		3.016	1	320 7918	320 7918	320 7918	320 7918
31	PLATE (Ground)		3.016	1	448 8549	448 8549	448 8549	448 8549
32	TERMINAL, Spade (Auxiliary)		3.016	1	448 8550	448 8550	448 8550	448 8550
33	WASHER		3.016	1	448 9451	448 9451	448 9451	448 9451
34	INSULATOR		3.016	1	448 9452	448 9452
35	SCREW		3.016	1	448 9453	448 9453
41	TERMINAL (Electric Terminal)		3.016	1	812 3108	812 3108
37	WASHER		17.820	1	G120380	G120380	G120380	G120380
38	NUT		17.412	1	G271172	G271172	G271172	G271172
40	CAPACITOR (Output Terminal)		3.016	1	318 1090	318 1090	318 1090	318 1090
41	TERMINAL, Spade (Auxiliary)		3.016	1	812 3108	812 3108	812 3108	812 3108
42	CABLE ASSY.		3.016	1	812 3143	812 3143
43	CAPACITOR (Regulator Terminal)		15.320	1	812 5558	812 5558	812 5558	812 5558
44	SPACER		3.016	1	812 5790	812 5790
45	SLEEVE		3.016	1	812 6140	812 6140

◀ SEE ILLUSTRATION FACING PAGE



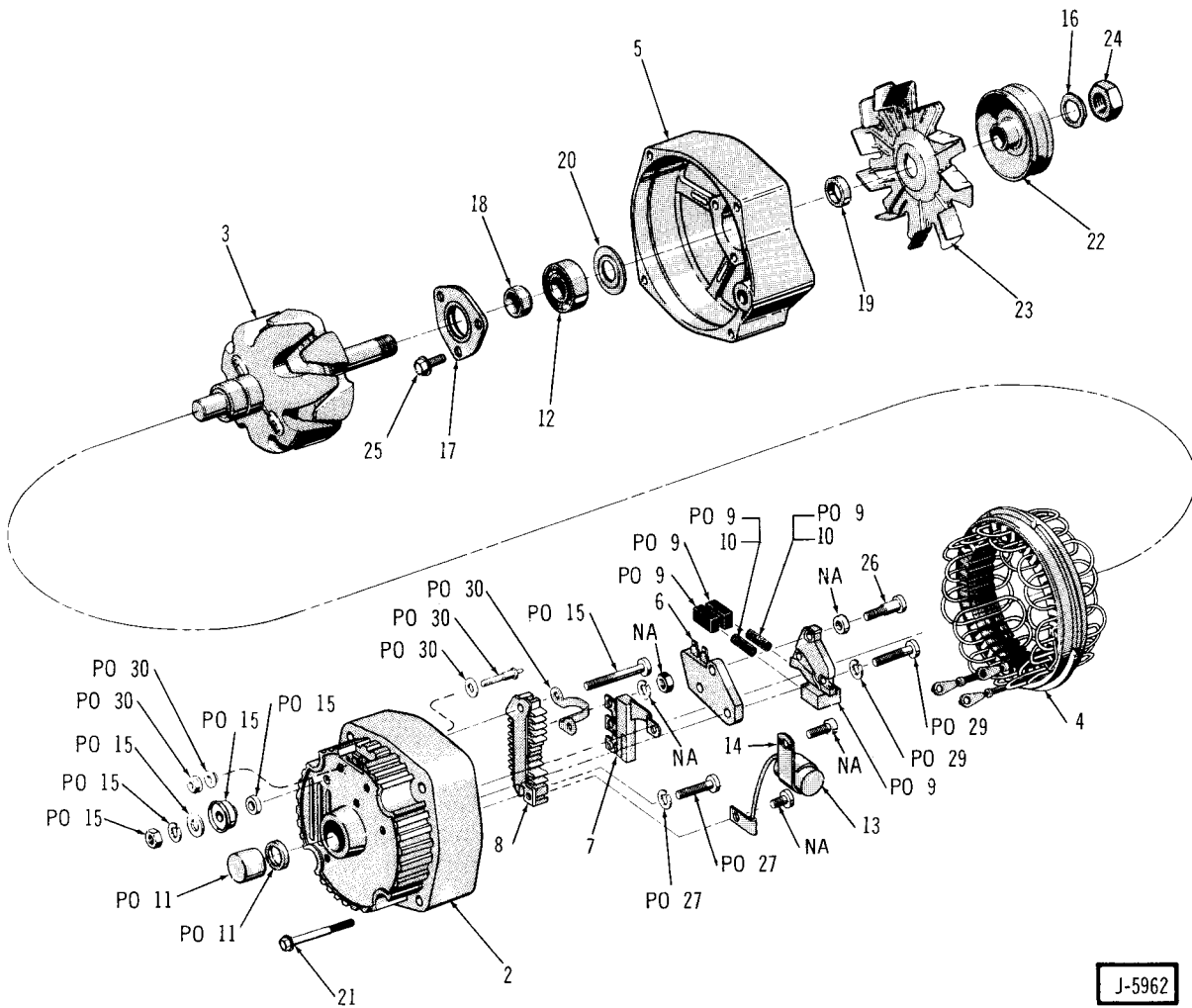
J-5996

ALTERNATOR

SEE CHART FACING PAGE ►

KEY NO.	DESCRIPTION	GROUP NO.	PER CAR	PART	PART	PART
				NO.	NO.	NO.
				MOTO- ROLA	MOTO- ROLA	MOTO- ROLA
				8AL2051F	8AL2052K	8AL2053L
1	ALTERNATOR (Low P. Fly)	3.016	1	812 5949	812 5949	812 5949
3	NUT	17.412	6	G271166	G271166	G271166
4	TRIO ASSY. (Ende)	3.016	1	812 5026	812 5026	812 5026
5	WASHER	3.016	3	320 4158	320 4158	320 4158
6	SHIELD	17.671	2	G456794	G456794	G456794
7	INSULATOR	3.016	1	448 9449	448 9449	448 9449
8	WASHER	3.016	2	448 9450	448 9450	448 9450
9	BRUSHES	3.016	1	320 4152	320 4152	320 4152
10	BOLT	3.016	4	320 5053	320 5053	320 5053
11	HOUSING	3.016	1	448 9403	448 9403	448 9403
12	INSULATOR	3.016	1	448 9448	448 9448	448 9448
13	SPACER	3.016	1	812 5790	812 5790	812 5790
14	DIODE (Positive)	3.016	1	448 9405	448 9405	448 9405
15	DIODE (Negative)	3.016	1	448 9404	448 9404	448 9404
16	STATOR	3.016	1	812 1301	320 5227	448 9408
17	RETAINER	3.016	1	320 4150	320 4150	320 4150
18	BEARING	3.016	1	320 4146	320 4146	320 4146
19	ROTOR	3.016	1	320 4145	320 5054	812 0172
20	KEY	17.344	1	G103905	G103905	G103905
21	WASHER	3.016	1	320 4144	320 4144	320 4144
22	BEARING	3.016	1	313 9988	313 9988	313 9988
23	HOUSING	3.016	1	320 4142	320 4142	320 4142
24	NUT	17.414	1	G120611	G120611	G120611
25	SPACER	3.017	1	320 4141	320 4141	320 4141
26	FAN	3.017	1	320 4140	320 4140	320 4140
27	PULLEY	3.017	1	320 4139	320 4139	320 4139
28	WASHER	17.820	1	G103325	G103325	G103325
29	NUT	3.017	1	320 4160	320 4160	320 4160
30	SHIELD	3.016	1	320 7918	320 7918	320 7918
31	PLATE, Ground	3.016	1	448 8549	812 8549	812 8549
32	TERMINAL, Spade	3.016	1	448 8550	448 8550	448 8550
33	WASHER	3.016	1	448 9451	448 9451	448 9451
37	WASHER	17.820	1	G120380	G120380	G120380
38	NUT	17.412	1	G271172	G271172	G271172
40	CAPACITOR	15.320	1	318 1090	318 1090	318 1090

◀ SEE ILLUSTRATION FACING PAGE



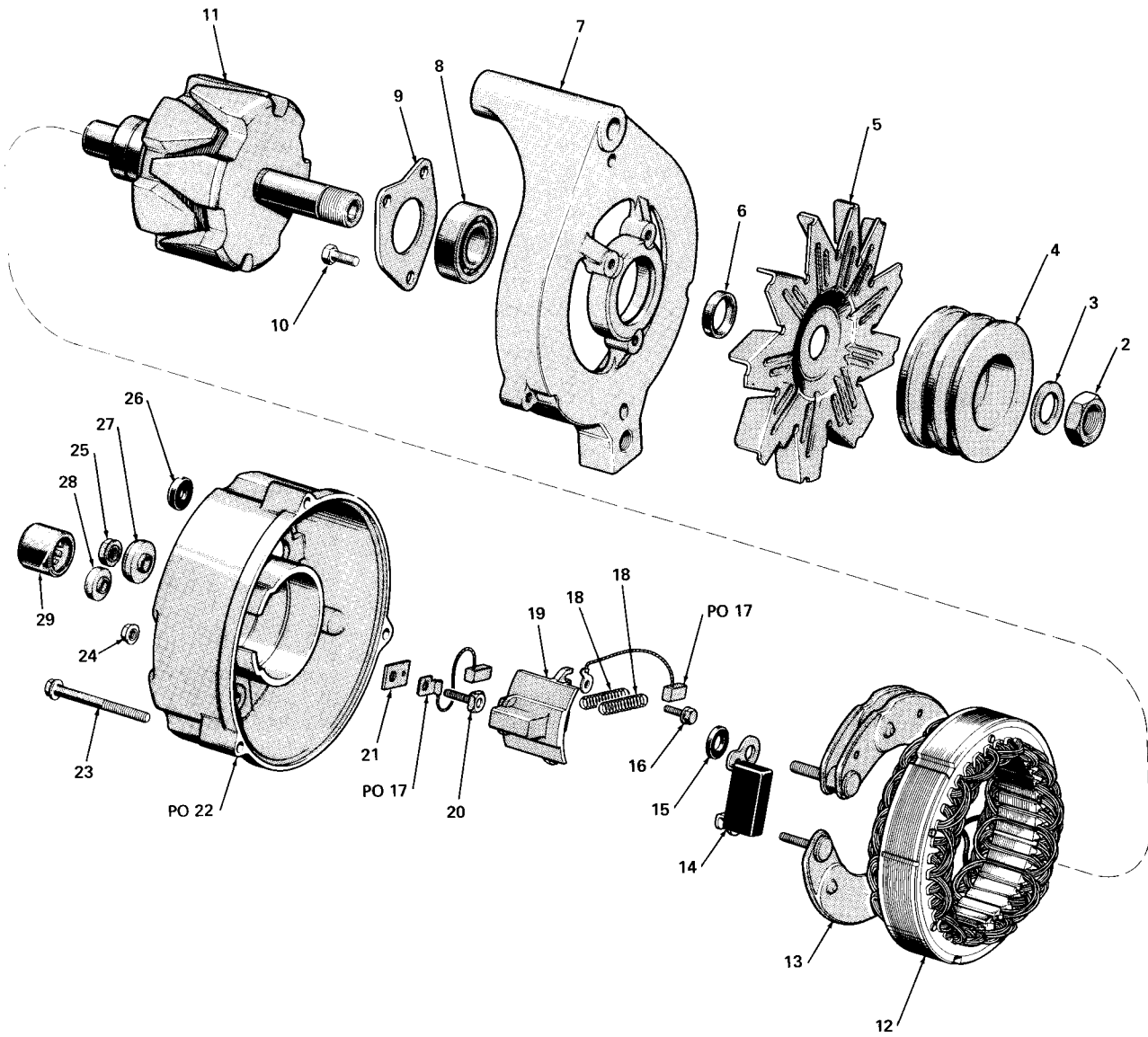
J-5962

ALTERNATOR

SEE CHART FACING PAGE ►

KEY NO.	DESCRIPTION	PAKS CODE	GROUP NO.	PER CAR	PART	PART	PART	PART
					NO.	NO.	NO.	NO.
					DELCO- REMY	DELCO- REMY	DELCO- REMY	DELCO- REMY
					1100927	1100544	1100928	1102465
					1102877	1102894	1102878	1102879
1	ALTERNATOR (1975)		3.016	1	812 5155	812 5155	812 5155	812 5155
	ALTERNATOR (1976)		3.016	1	812 7023	812 7023	812 7023	812 7023
2	HOUSING		3.016	1	812 5194	812 5194	812 5194	812 5194
3	ROTOR		3.016	1	812 5195	812 5195	812 5195	812 5195
4	STATOR		3.016	1	812 5174	812 5196	812 5196	812 5196
5	HOUSING		3.016	1	812 5175	812 5175	812 5175	812 5175
6	REGULATOR		3.016	1	812 5176	812 5176	812 5176	812 5176
7	DIODE TRIO		3.016	1	812 5177	812 5177	812 5177	812 5177
8	RECTIFIER		3.016	1	812 5178	812 5178	812 5178	812 5178
9	BRUSH HOLDER ASSY. (Incl. Spring)		3.016	1	812 5179	812 5179	812 5179	812 5179
10	SPRING		3.016	2	812 5180	812 5180	812 5180	812 5180
11	BEARING		3.016	1	812 5181	812 5181	812 5181	812 5181
12	BEARING		3.016	1	812 5182	812 5182	812 5182	812 5182
13	CAPACITOR		3.016	1	812 5183	812 5183	812 5183	812 5183
14	CLAMP		3.016	1	812 5184	812 5184	812 5184	812 5184
15	TERMINAL PACKAGE		3.016	1	812 5185	812 5185	812 5185	812 5185
16	WASHER, Lock		3.016	1	812 5186	812 5186	812 5186	812 5186
17	RETAINER		3.016	1	812 5187	812 5187	812 5187	812 5187
18	COLLAR (Inner)		3.016	1	812 5188	812 5188	812 5188	812 5188
19	COLLAR (Outer)		3.016	1	812 5189	812 5189	812 5189	812 5189
20	WASHER		3.016	1	812 5190	812 5190	812 5190	812 5190
21	BOLT, Thru		3.016	1	812 5191	812 5191	812 5191	812 5191
22	PULLEY		3.016	1	812 5192	812 5192	812 5192	812 5192
23	FAN		3.016	1	812 5193	812 5193	812 5193	812 5193
24	NUT, Pulley		3.016	1	812 5242	812 5242	812 5242	812 5242
25	SCREW		3.016	1	812 5243	812 5243	812 5243	812 5243
26	SCREW		3.016	1	812 5244	812 5244	812 5244	812 5244
27	SCREW		3.016	1	812 5245	812 5245	812 5245	812 5245
29	SCREW, Ground		3.016	1	812 6281	812 6281	812 6281	812 6281
30	TERMINAL PACKAGE, Relay (1976).		3.016	1	812 7053	812 7053	812 7053	812 7053

◀ SEE ILLUSTRATION FACING PAGE

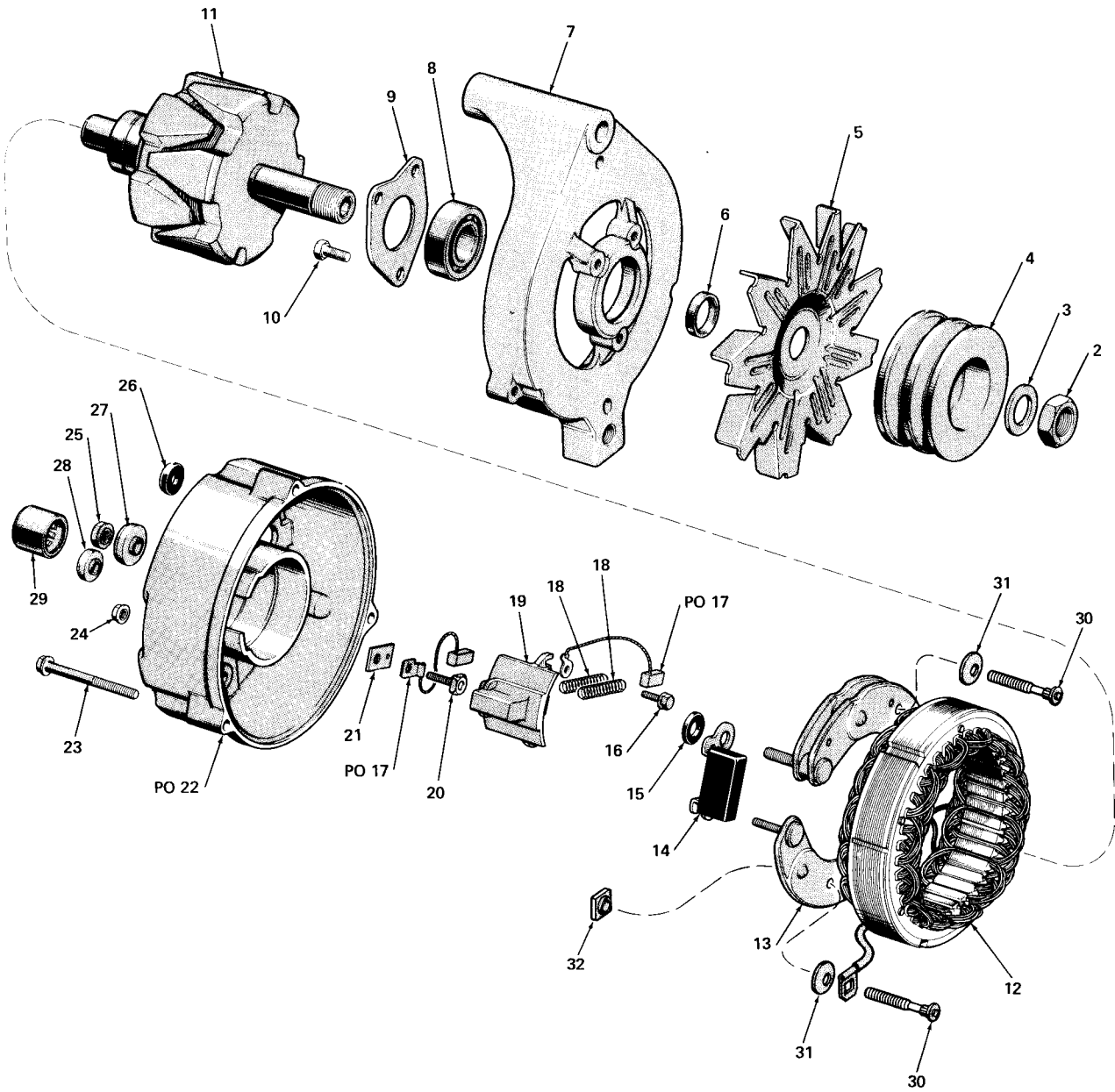


J-6014

SEE CHART FACING PAGE ►

KEY NO.	DESCRIPTION	PAKS CODE	GROUP NO.	PER CAR	PART NO.	PART NO.
					MOTOR- CRAFT	MOTOR- CRAFT
					D6FF 10300AA	D6FF 10300DA
1	ALTERNATOR (Less Fan And Pulley)		3.016	1	812 6436	812 6436
2	NUT		3.016	1	812 6523	812 6523
3	WASHER		3.016	1	812 6524	812 6524
4	PULLEY		3.016	1	812 6450	812 6450
5	FAN		3.016	1	812 6437	812 6437
6	SPACER		3.016	1	812 6449	812 6449
7	HOUSING, Front		3.016	1	812 6454	812 6454
8	BEARING, Front		3.016	1	812 6455	812 6455
9	RETAINER, Front Bearing		3.016	1	812 6456	812 6456
10	SCREW (10-24 x .38)		17.	3	G132850	G132850
11	ROTOR		3.016	1	812 6453	812 6453
12	STATOR		3.016	1	812 6479	812 6479
13	RECTIFIER ASSY.		3.016	1	812 6481	812 6481
14	CAPACITOR, Radio		3.016	1	812 6484	812 6484
15	INSULATOR, Capacitor		3.016	1	812 6483	812 6483
16	SCREW, Brush Holder (6-32 x 50)		17.	1	G425522	G425522
17	BRUSH SET		3.016	1	812 6475	812 6475
18	SPRING, Brush		3.016	2	812 6476	812 6476
19	HOLDER, Brush		3.016	1	812 6474	812 6474
20	SCREW, Brush Terminal		3.016	1	812 6525	812 6525
21	INSULATOR, Brush Terminal		3.016	1	812 6478	812 6478
22	HOUSING, Rear (Incl. Bearing)		3.016	1	812 6457	812 6457
23	BOLT, Thru		3.016	3	812 6458	812 6458
24	NUT (10-24)		17.412	4	G271166	G271166
25	NUT (1/4"-20)		17.412	1	G271172	G271172
26	INSULATOR, Stator		3.016	1	812 6554	812 6554
27	INSULATOR, Battery		3.016	1	812 6482	812 6482
28	INSULATOR, Field		3.016	1	812 6477	812 6477
29	BEARING, Rear		3.016	1	812 6459	812 6459
30	SCREW (10 x 24 x 1-9/16")		3.016	2	812 7333	812 7333
31	WASHER		3.016	2	812 7334	812 7334
32	INSULATOR		3.016	1	812 7335	812 7335

◀ SEE ILLUSTRATION FACING PAGE

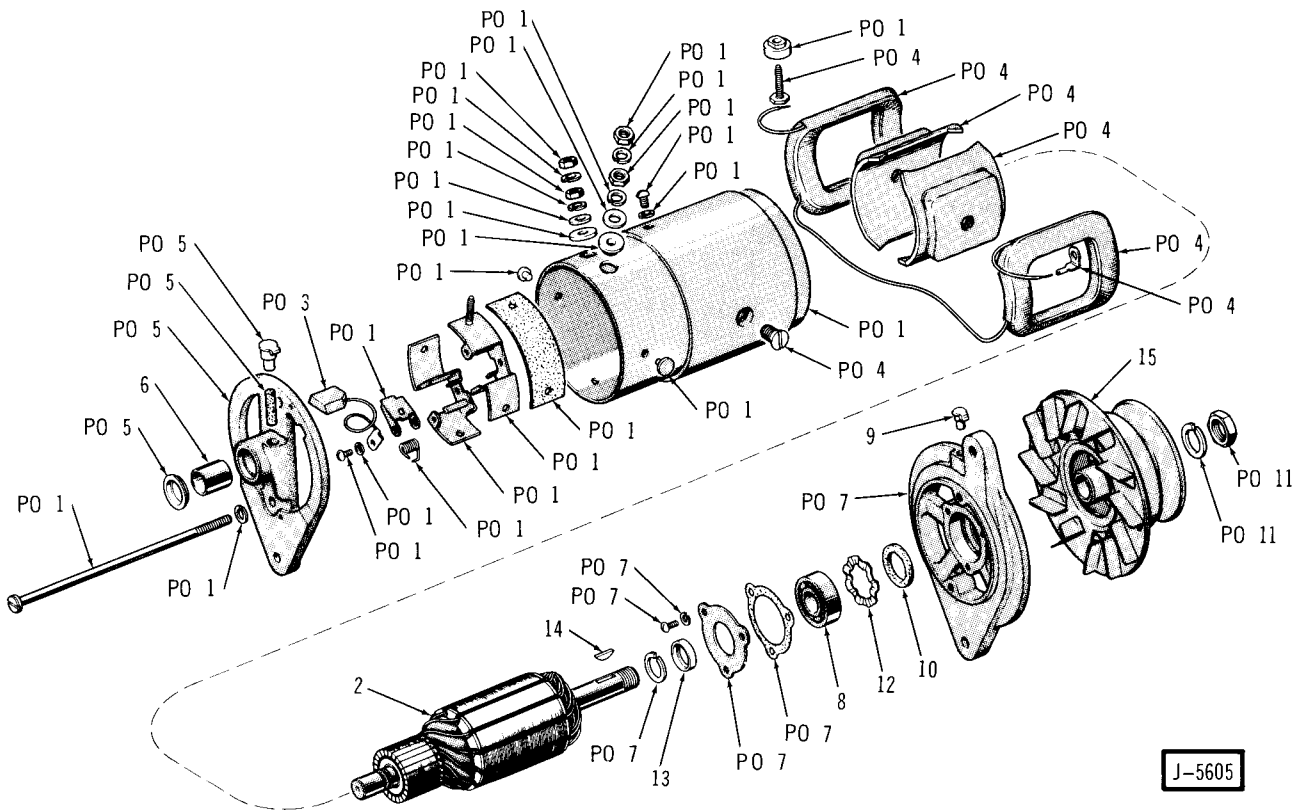


J-6014

SEE CHART FACING PAGE ►

KEY NO.	DESCRIPTION	PAKS CODE	GROUP NO.	PER CAR	PART NO.	PART NO.	PART NO.
					MOTOR-CRAFT	MOTOR-CRAFT	MOTOR-CRAFT
					D5AF 10346BA	D6FF 10300BA	D6FF 10300CA
1	ALTERNATOR (Less Fan And Pulley)		3.016	1	812 6436	812 6436	812 6436
2	NUT.....		3.016	1	812 6523	812 6523	812 6523
3	WASHER.....		3.016	1	812 6524	812 6524	812 6524
4	PULLEY.....		3.026	1	812 6450	812 6450	812 6450
5	FAN.....		3.016	1	812 6437	812 6437	812 6437
6	SPACER.....		3.016	1	812 6449	812 6449	812 6449
7	HOUSING, Front.....		3.016	1	812 6454	812 6454	812 6454
8	BEARING, Front.....		3.016	1	812 6455	812 6455	812 6455
9	RETAINER, Front Bearing.....		3.016	1	812 6456	812 6456	812 6456
10	SCREW (10-24 x .38).....		17.	3	G132850	G132850	G132850
11	ROTOR.....		3.016	1	812 6451	812 6451	812 6451
12	STATOR.....		3.016	1	812 6480	812 6480	812 6480
13	RECTIFIER ASSY.		3.016	1	812 6481	812 6481	812 6481
14	CAPACITOR, Radio.....		3.016	1	812 6484	812 6484	812 6484
15	INSULATOR, Capacitor.....		3.016	1	812 6483	812 6483	812 6483
16	SCREW, Brush Holder (6-32 x 50) ...		17.	1	G425522	G425522	G425522
17	BRUSH SET.....		3.016	1	812 6475	812 6475	812 6475
18	SPRING, Brush.....		3.016	2	812 6476	812 6476	812 6476
19	HOLDER, Brush.....		3.016	1	812 6474	812 6474	812 6474
20	SCREW, Brush Terminal.....		3.016	1	812 6525	812 6525	812 6525
21	INSULATOR, Brush Terminal.....		3.016	1	812 6478	812 6478	812 6478
22	HOUSING, Rear (Incl. Bearing).....		3.016	1	812 6457	812 6457	812 6457
23	BOLT, Thru.....		3.016	3	812 6458	812 6458	812 6458
24	NUT (10-24).....		17.412	4	G271166	G271166	G271166
25	NUT (1/4"-20).....		17.	1	G271172	G271172	G271172
26	INSULATOR, Stator.....		3.016	1	812 6554	812 6554	812 6554
27	INSULATOR, Battery.....		3.016	1	812 6482	812 6482	812 6482
28	INSULATOR, Field.....		3.016	1	812 6477	812 6477	812 6477
29	BEARING, Rear.....		3.016	1	812 6459	812 6459	812 6459
30	SCREW (10-24 x 1-9/16").....		3.016	2	812 7333	812 7333	812 7333
31	WASHER.....		3.016	2	812 7334	812 7334	812 7334
32	INSULATOR.....		3.016	1	812 7335	812 7335	812 7335

◀ SEE ILLUSTRATION FACING PAGE

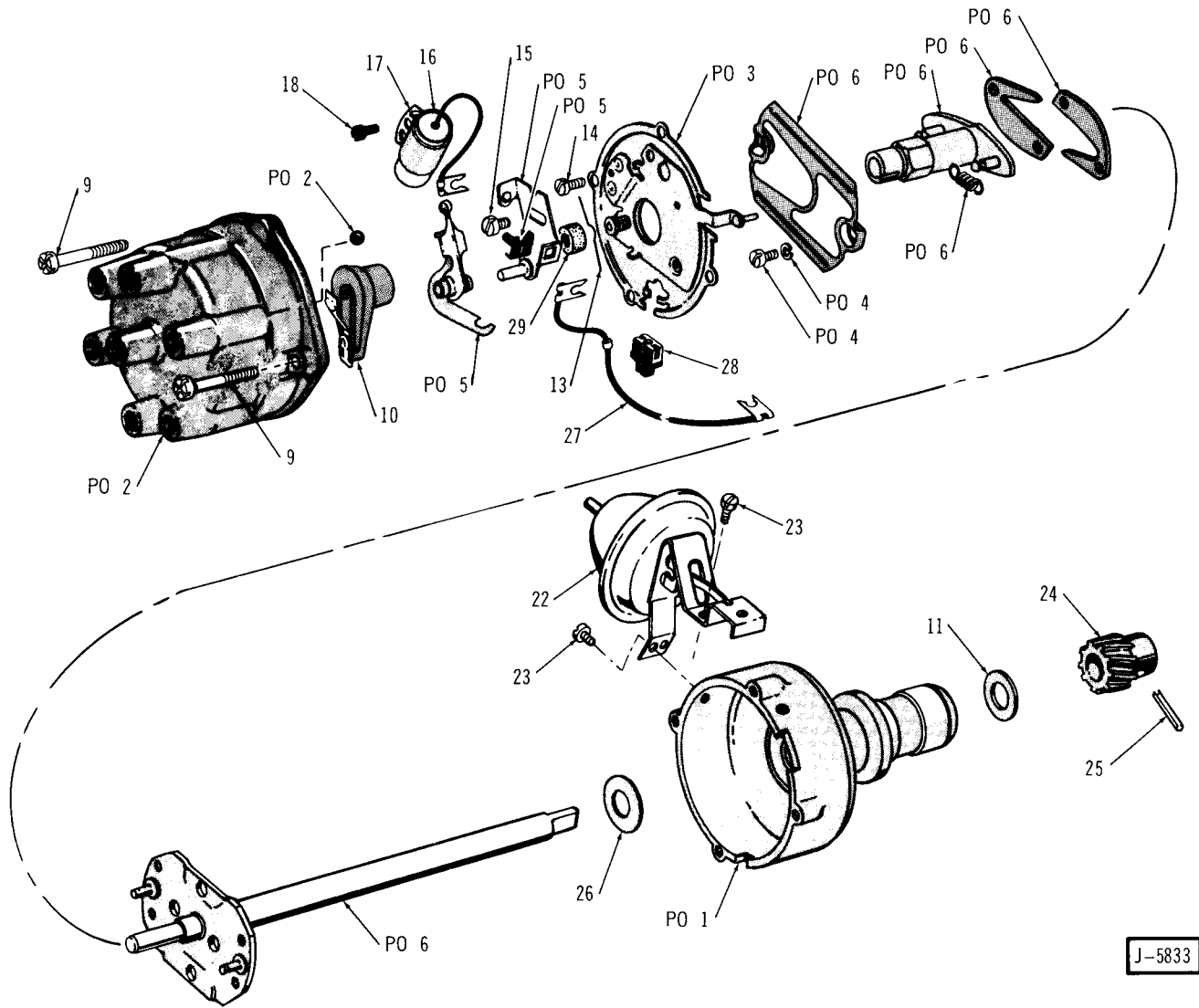


GENERATOR

SEE CHART FACING PAGE ►

KEY NO.	DESCRIPTION	PAKS CODE	GROUP NO.	PER CAR	PART NO.	PART NO.
					AUTO- LITE	AUTO- LITE
					AL-GJP 7402B	AL-GJP 7402S
1	GENERATOR (Less Pulley)		3.005	1	925 044	925 044
2	ARMATURE		3.005	1	919 287	919 287
3	BRUSH SET	173	3.005	1	925 652	925 652
4	COIL ASSY.	101	3.005	1	925 785	925 785
5	HEAD ASSY. (Commutator)	134	3.005	1	925 649	925 649
6	BEARING (Bronze)		3.005	1	919 286	919 286
7	HEAD ASSY. (Drive End)	122	3.005	1	925 651	925 651
8	BEARING (Ball)		17.	1	G901203	G901203
9	OILER		3.005	1	302 347	302 347
10	WASHER (Felt)		3.005	1	106 312	106 312
11	NUT AND WASHER	136	3.005	1	942 666	942 666
12	RETAINER		3.005	1	109 171	109 171
13	SPACER		3.005	1	923 149	923 149
14	KEY		3.005	1	A 1641	A 1641
15	PULLEY		3.010	1	120 683	120 683

◀ SEE ILLUSTRATION FACING PAGE

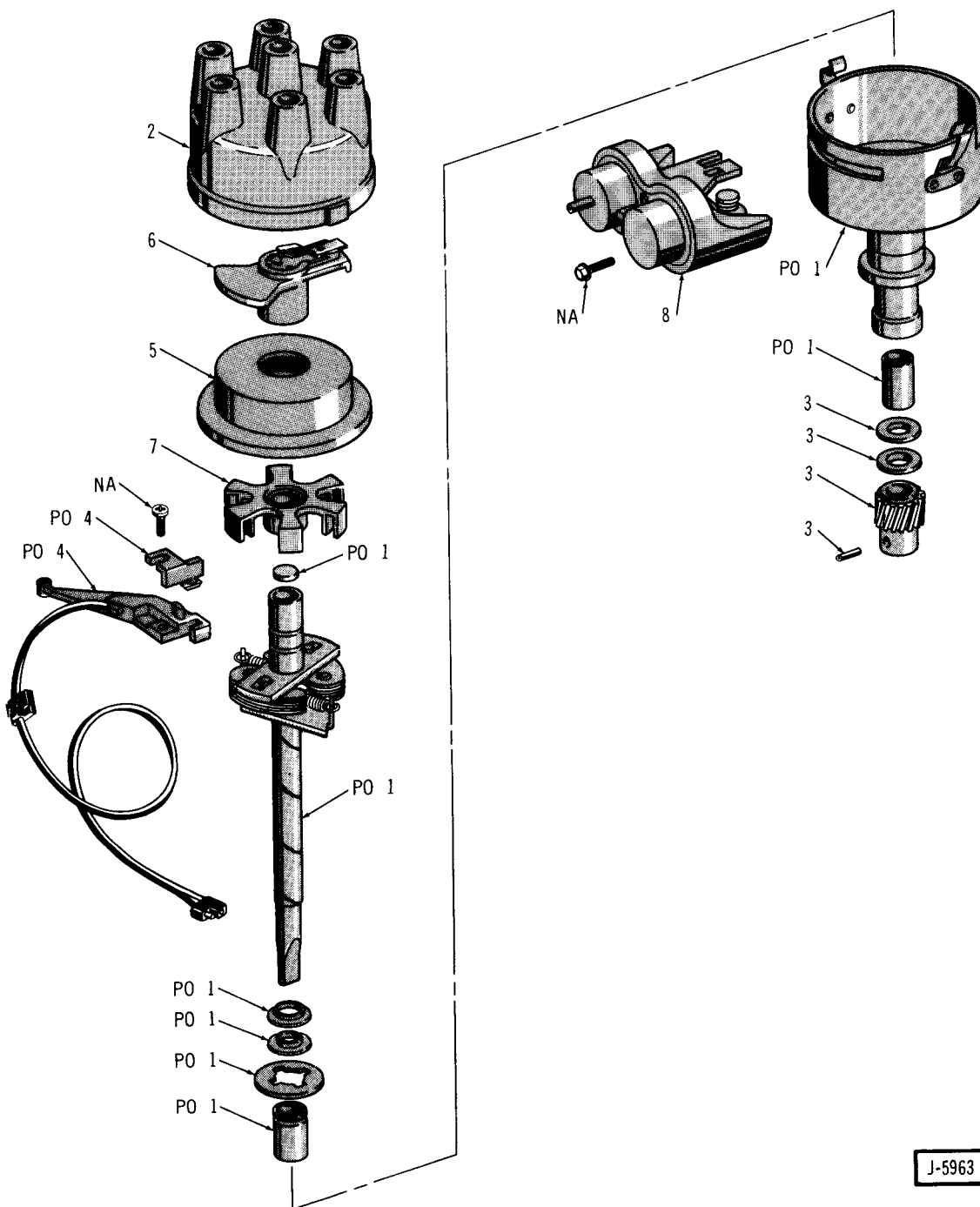


DISTRIBUTOR

SEE CHART FACING PAGE ▶

KEY NO.	DESCRIPTION	PAKS CODE	GROUP NO.	PER CAR	PART NO.
					DELCO REMY
					1110529
1	DISTRIBUTOR		3.030	1	322 3014
2	CAP ASSY. 107		3.032	1	448 8091
3	PLATE ASSY.		3.030	1	320 4201
4	SCREW ASSY.		3.030	2	320 6655
5	CONTACT SET	109	3.031	1	448 6720
6	SHAFT ASSY. (Complete)	182	3.030	1	812 4619
8	SCREW (8-32)		17.592	1	G187871
9	SCREW (10-32)		17.592	1	G157070
10	ROTOR		3.035	1	448 8087
11	WASHER		3.030	1	320 7192
13	SPRING		3.030	1	320 5360
14	SCREW		17.596	2	G453461
15	SCREW		17.596	1	320 6645
16	CONDENSER		3.030	1	320 4584
17	BRACKET		3.030	1	320 6652
18	SCREW		17.596	1	G454458
22	CONTROL		3.046	1	812 2350
23	SCREW		3.030	2	320 6656
24	GEAR		3.042	1	320 5387
25	PIN		3.042	1	320 4213
26	WASHER (Seal)		3.030	1	320 6650
27	LEAD		3.030	1	320 4206
28	GROMMET		3.030	1	320 6658
29	PAD		3.030	1	812 1648

◀ SEE ILLUSTRATION FACING PAGE

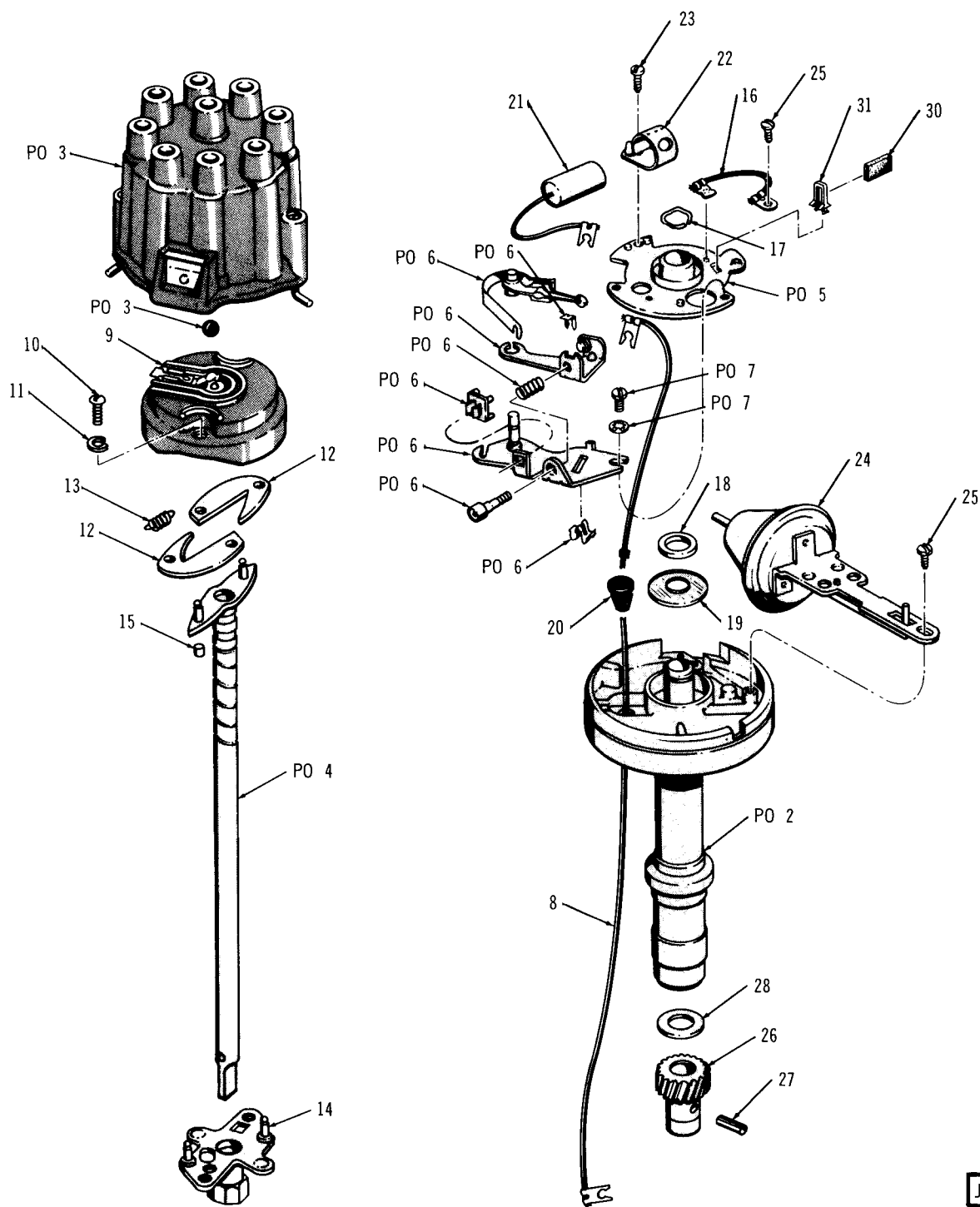


DISTRIBUTOR

SEE CHART FACING PAGE ►

KEY NO.	DESCRIPTION	PAKS CODE	GROUP NO.	PER CAR	PART NO.	PART NO.	PART NO.
					<i>PRESTO-LITE</i>	<i>PRESTO-LITE</i>	<i>PRESTO-LITE</i>
					<i>IDJ-4002B</i>	<i>IDJ-4002C</i>	<i>IDJ-4002E</i>
1	DISTRIBUTOR.....		3.030	1	322 4968	322 4969	322 7331
2	CAP.....		3.032	1	812 5447	812 5447	812 5447
3	GEAR.....		3.030	1	320 8656	320 8656	320 8656
4	SENSOR ASSY.....		3.038	1	812 5444	812 5444	812 5444
5	SHIELD.....		3.036	1	812 5443	812 5443	812 5443
6	POTOR.....		3.035	1	812 5441	812 5441	812 5441
7	TRIGGER WHEEL.....		3.047	1	812 5440	812 5440	812 5440
8	CONTROL, Vacuum.....		3.046	1	812 5438	812 5438	812 5438

◀ SEE ILLUSTRATION FACING PAGE



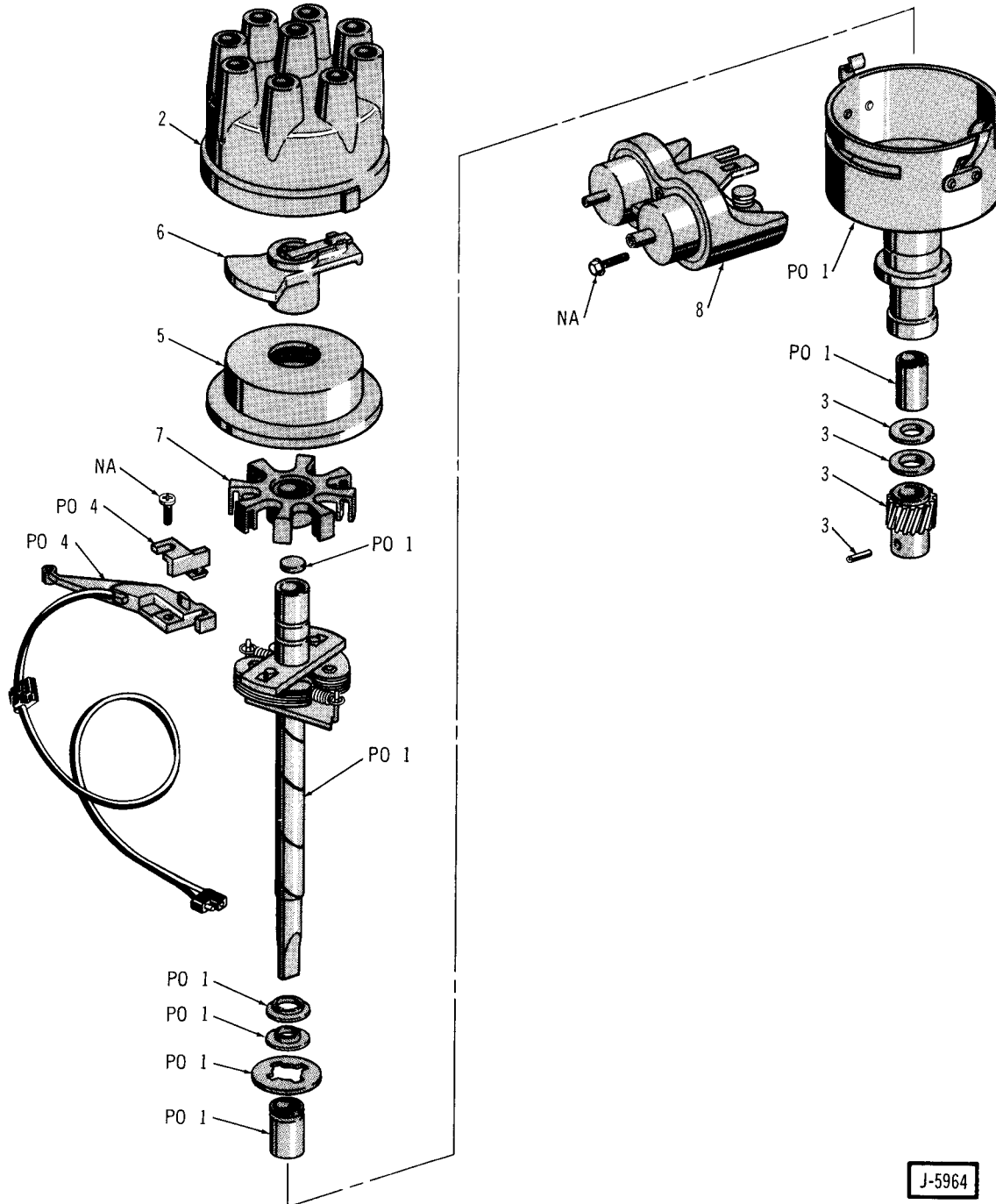
J-5609

DISTRIBUTOR

SEE CHART FACING PAGE ►

KEY NO.	DESCRIPTION	PAKS CODE	GROUP NO.	PER CAR	PART NO.	PART NO.	PART NO.
					DELCO Remy	DELCO Remy	DELCO Remy
					1112112	1112179	1112215
1	DISTRIBUTOR.....		3.030	1	321 5826	321 7798	321 9196
2	HOUSING ASSY.	137	3.030	1	320 7406	320 7406	320 7406
3	CAP ASSY.	68	3.032	1	320 0192	320 0192	320 0192
4	SHAFT ASSY.	135	3.030	1	320 8004	320 7408	812 2346
5	PLATE ASSY.	155	3.030	1	320 7410	320 7410	320 7410
6	CONTACT SET.....	119	3.031	1	448 6721	448 6721	448 6721
7	SCREW ASSY.		3.030	1	320 7200	320 7200	320 7200
8	LEAD ASSY.		3.030	1	320 4220	320 4220	320 4220
9	ROTOR		3.035	1	320 4216	320 4216	812 2343
10	SCREW		17.598	2	G160035	G160035	G160035
11	WASHER.....		17.820	2	G118873	G118873	G118873
12	WEIGHT		3.030	2	320 6644	320 6644	320 6644
13	SPRING.....		3.030	2	320 7998	812 1722	812 2345
14	CAM.....		3.030	1	812 0593	320 7407	320 7995
15	SLEEVE		3.030	1	320 7409	320 7409	320 7409
16	LEAD		3.030	1	320 6674	320 6674	320 6674
17	SPRING.....		3.030	1	320 6677	320 6677	320 6677
18	WASHER		3.030	1	320 6666	320 6666	320 6666
19	SEAL		3.030	1	320 6650	320 6650	320 6650
20	GROMMET		3.030	1	320 6672	320 6672	320 6672
21	CONDENSER		3.033	1	320 4584	320 4584	320 4584
22	BRACKET		3.030	1	320 6669	320 6669	320 6669
23	SCREW		3.030	1	320 6655	320 6655	320 6655
24	CONTROL		3.046	1	812 0586	812 0586	812 2347
25	SCREW		17.596	2	G454342	G454342	G454342
26	GEAR		3.042	1	319 8787	319 8787	319 8787
27	PIN		3.030	1	320 4213	320 4213	320 4213
28	WASHER		3.030	1	320 6659	320 6659	320 6659
30	PAD		3.030	1	812 1648	812 1648	812 1648
31	RETAINER.....		3.030	1	812 0591

◀ SEE ILLUSTRATION FACING PAGE



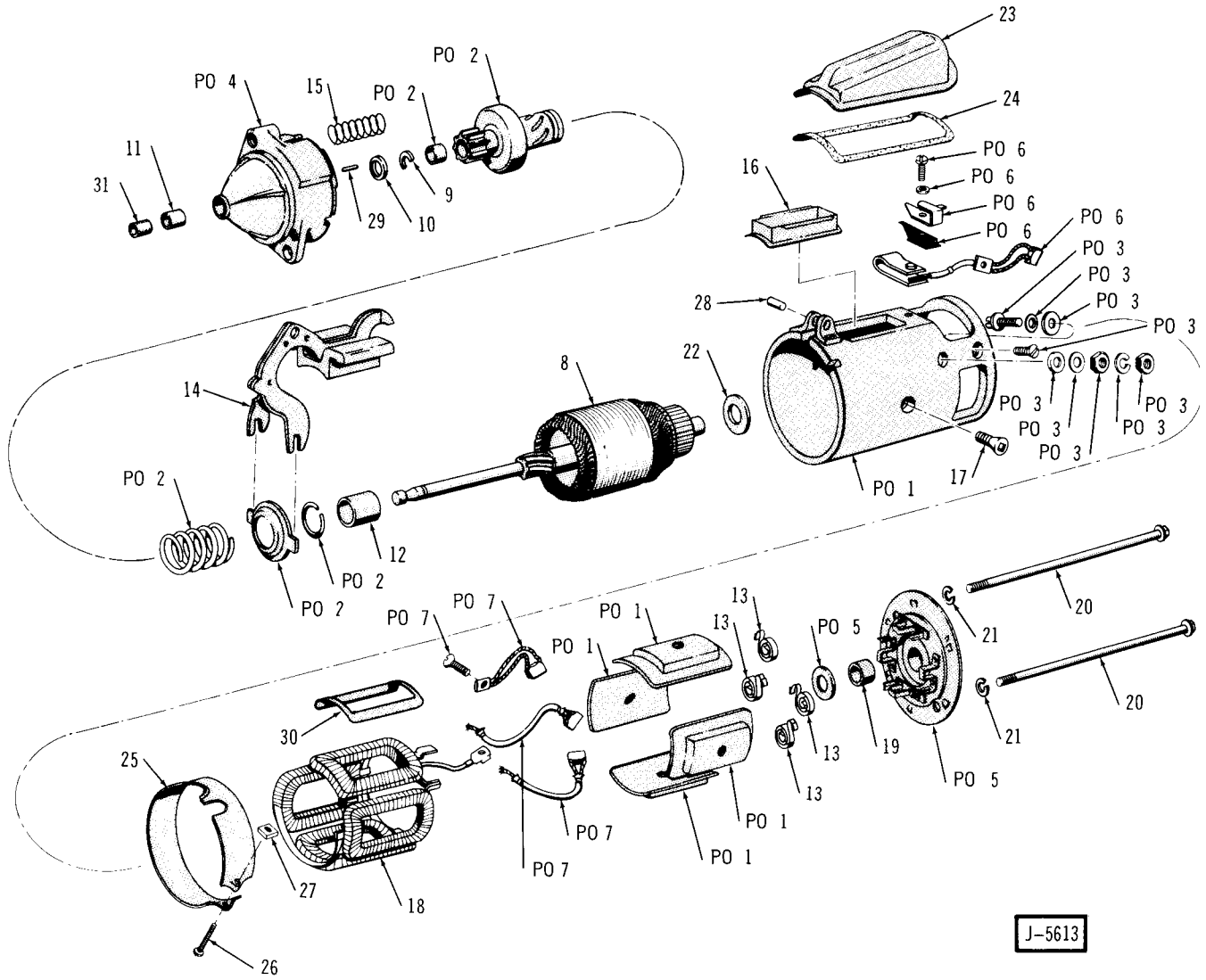
DISTRIBUTOR

SEE CHART FACING PAGE ►

KEY NO.	DESCRIPTION	PAKS CODE	GROUP NO.	PER CAR	PART NO.	PART NO.	PART NO.	PART NO.
					<i>PRESTO-LITE</i>	<i>PRESTO-LITE</i>	<i>PRESTO-LITE</i>	<i>PRESTO-LITE</i>
					<i>IDJ-4001</i>	<i>IDJ-4001A</i>	<i>IDJ-4001B</i>	<i>IDJ-4001C</i>
1	DISTRIBUTOR.....		3.030	1	322 4746	322 4966	322 4965	322 5295
2	CAP.....		3.032	1	812 5448	812 5448	812 5448	812 5448
3	GEAR.....		3.030	1	320 8615	320 8615	320 8615	320 8615
4	SENSOR ASSY.....		3.038	1	812 5444	812 5444	812 5444	812 5444
5	SHIELD.....		3.036	1	812 5443	812 5443	812 5443	812 5443
6	ROTOR.....		3.035	1	320 1799	320 1799	320 1799	320 1799
7	TRIGGER WHEEL.....		3.037	1	812 5439	812 5439	812 5439	812 5439
8	CONTROL, Vacuum.....		3.046	1	812 5436	812 5436	812 5437	812 5437

KEY NO.	DESCRIPTION	PAKS CODE	GROUP NO.	PER CAR	PART NO.	PART NO.	PART NO.
					<i>PRESTO-LITE</i>	<i>PRESTO-LITE</i>	<i>PRESTO-LITE</i>
					<i>IDJ-4001E</i>	<i>IDJ-4001F</i>	<i>IDJ-4001G</i>
1	DISTRIBUTOR.....		3.030	1	322 8263	322 8265	322 8264
2	CAP.....		3.032	1	812 5448	812 5448	812 5448
3	GEAR.....		3.030	1	320 8615	320 8615	320 8615
4	SENSOR ASSY.....		3.038	1	812 5444	812 5444	812 5444
5	SHIELD.....		3.036	1	812 5443	812 5443	812 5443
6	ROTOR.....		3.035	1	320 1799	320 1799	320 1799
7	TRIGGER WHEEL.....		3.037	1	812 5439	812 5439	812 5439
8	CONTROL, Vacuum.....		3.046	1	812 5437	812 5437	812 5436

◀ SEE ILLUSTRATION FACING PAGE



J-5613

STARTING MOTOR

SEE CHART FACING PAGE ►

KEY NO.	DESCRIPTION	PAKS CODE	GROUP NO.	PER CAR	PART NO.	PART NO.	PART NO.
1	STARTING MOTOR		3.020	1	321 2235		
2	DRIVE ASSY. 64		3.020	1	812 0193		
3	TERMINAL KIT	72	3.020	1	320 7522		
4	END, Drive	125	3.020	1	448 9353		
5	END, Commutator..... 121		3.020	1	320 7423		
6	POINT KIT	66	3.020	1	320 7523		
7	BRUSH KIT	112	3.020	1	320 7524		
8	ARMATURE		3.020	1	812 0028		
9	RING		3.020	1	320 7418		
10	RETAINER.....		3.020	1	320 7419		
11	BUSHING		3.020	1	812 0030		
12	SPACER		3.020	1	812 1196		
13	SPRING.....		3.020	4	320 7424		
14	YOKE		3.020	1	320 7425		
15	SPRING.....		3.020	1	320 7426		
16	SLEEVE		3.020	1	320 7428		
17	SCREW		3.020	3	320 7429		
18	COIL SET		3.020	1	320 7415		
19	BUSHING		3.020	1	320 7430		
20	BOLT		3.020	2	320 7431		
21	WASHER		17.820	2	G103319		
22	WASHER		17.814	1	448 7328		
23	COVER		3.020	1	320 7432		
24	GASKET		3.020	1	320 7433		
25	BAND		3.020	1	320 7434		
26	SCREW		17.614	1	G132934		
27	NUT.....		17.414	1	G120611		
28	PIN		3.020	1	320 7435		
29	SCREW		3.020	1	320 7436		
30	FLANGE.....		3.020	1	320 7427		
31	SEAL (Cup)		3.020	1	812 0029		

◀ SEE ILLUSTRATION FACING PAGE

ELECTRICAL - INSTRUMENTS

3.014

GROUP NO. — DESCRIPTION — YEAR and MODEL	PAKS CODE	PRIMARY GROUP NO.	PER CAR	PART NO.	CODE
3.001-1 SPARK PLUG					
74/ (Champion N-12Y) SIX.....			6	318 9066	
74/ (Champion N-12Y) V8.....			8	318 9066	
3.001-2 GASKET, Spark Plug					
74/			AR	44 042	
3.002-1 CONTACT KIT, Ignition (Incl. Contact Set And Condenser)					
74 SIX.....			1	448 8760	
74 V8.....			1	448 8780	
3.003-1 TUNE-UP KIT (Incl. Spark Plugs, Contact Set And Condenser)					
74 SIX.....			1	448 9455	
74 V8.....			1	320 8325	
3.005-1 GENERATOR (Less Pulley)(Note: Generator Must Be Of Same Make As Voltage Regulator) (For Components Refer To Chart Index Page Gr 3 - C 1)(For Alternator Refer To Group 3.016)					
74 10-20-40 (258).....(Use 942 180)			1	925 044	
3.008-1 BELT, Alternator And Radiator Fan					
USED LESS AMERICAN AIR					
74 10-20-40 (258-Used With Alternator).....	4.612		1	322 3004	
74/ 10-20-40 (258-Used With Generator).....	2.016		1	926 482	
74 10-25-40 (360-WHDC)(401-WHDC).....	2.016		1	999 032	
74 10-25-40 (360-LHDC)(401-LHDC).....	2.016		1	322 3006	
74 80 (Six).....	4.612		1	322 3004	
74 80 (V8-LHDC).....	2.016		1	322 3006	
74 80 (V8-WHDC).....	2.016		1	999 032	
75.....	2.016		1	322 3006	
76 80-90 (Six).....			1	322 3006	
USED WITH AMERICAN AIR					
75/ SIX.....			1	812 6190	
3.008-2 BELT, Alternator Drive					
76 10-20-40 (V8-LAC).....	2.016		1	322 7690	
76 80-90 (V8).....	2.016		1	322 7690	
3.011-1 REGULATOR, Generator Voltage					
74 10-20-40 (258).....			1	923 130	
3.011-2 ATTACHING PARTS, Voltage Regulator To Splash Apron					
NUT, Hexagon..... 74 10-20-40 (258).....	17.412		2	G120614	
WASHER, Plain..... 74 10-20-40 (258).....	17.814		5	G120391	
3.014-1 STRAP, Generator Adjusting					
74 10-20-40 (258).....			1	942 879	
3.014-4 BRACKET, Generator Assembly					
74 10-20-40 (258).....			1	942 878	
3.014-5 ATTACHING PARTS, Bracket To Block					
BOLT, Hexagon..... 74 10-20-40 (258).....	17.038		2	G180121	
WASHER, Lock..... 74 10-20-40 (258).....	17.820		2	G120382	
3.014-6 ATTACHING PARTS, Generator To Bracket					
BOLT, Hexagon..... 74 10-20-40 (258).....	17.038		2	G123774	
NUT, Lock..... 74 10-20-40 (258).....	17.416		2	G442826	

3.016

ELECTRICAL - INSTRUMENTS

3.016-1 ALTERNATOR (Less Fan And Pulley)(For Components Refer To Chart Index Page Cr 3 - 1)
(For Generator Refer To Group 3.005)

74	(37 Amp. -Motorola 8AL2031F) For Service Use 51 Amp. 812 2449	1
74	(37 Amp. -Motorola 8AL2015K) For Service Use 51 Amp. 448 9410	1
74	(37 Amp. -Motorola 8AL2025F) For Service Use 51 Amp. 448 9410	1
74	(51 Amp. -Motorola 8AL2026F) For Service Use 51 Amp. 448 9410	1
74	(51 Amp. -Motorola 8AL2016K) For Service Use 51 Amp. 448 9410	1
74	(51 Amp. -Motorola 8AL2032K) For Service Use 51 Amp. 812 2449	1
75	SIX (Service Replacement For 37, 51, 63 Amp. Alternator)	1	812 5155
75	V8 (Service Replacement For 37, 51, 62 Amp. Alternator)	1	812 5949
76	SIX (Delco).....	1	812 7023
76	V8 (Motorcraft).....	1	812 6436

3.017-3 ATTACHING PARTS, Fan And Pulley To Alternator

KEY, Woodruff.....	74	17.344	1	G103905
KEY, Woodruff.....	75	V8	17.344	1	G103905
WASHER, Lock.....	74	17.820	1	G103325
WASHER, Lock.....	75	SIX	1	812 5186
WASHER, Lock.....	75	V8	17.820	1	G103325
NUT, Hexagon.....	74	1	320 4160
NUT, Hexagon.....	75	SIX	1	812 5242
NUT, Hexagon.....	75	V8	1	320 4160

3.017-4 SPACER, Alternator Pulley

74	1	320 4141
75	V8	1	320 4141

3.018-1 BRACKET, Alternator

74	(Front) SIX.....	1	321 7213
74	(Rear) SIX.....	1	321 7214
75	SIX (LAC).....	1	322 4476
76	SIX (LAC).....	1	322 7417
75/	SIX (WAC).....	1	322 4475
74	V8.....	1	318 9733
75	V8	1	321 8199
76	V8 (LAC).....	1	322 7676
76	V8 (WAC).....	1	322 7682

3.018-2 ATTACHING PARTS, Bracket To Alternator

BOLT, Hexagon.....	74	SIX... (7/8" Long)	17.038	1	G120229
BOLT, Hexagon.....	75/	SIX... (1" Long)	17.038	1	G180079
BOLT, Hexagon.....	74	SIX... (1-1/8" Long).....	17.038	1	G180123
BOLT, Hexagon.....	74	SIX... (2-1/4" Long).....	17.038	1	G120608
BOLT, Hexagon.....	75/	SIX... (2-3/4" Long)	17.038	1	G180137
BOLT, Hexagon.....	74	V8	17.038	1	G179848
BOLT, Hexagon.....	75	V8... (1" Long)	17.038	1	G180079
BOLT, Hexagon.....	75	V8... (2-1/2" Long)	17.038	1	G179849
BOLT, Hexagon.....	76	V8	1	400 4809
WASHER, Lock.....	74	SIX.....	17.820	2	G120382
WASHER, Lock.....	75/	SIX.....	17.820	1	G120214
WASHER, Lock.....	75	V8... (5/16" O.D.)	17.820	1	G120214
WASHER, Lock.....	75	V8... (3/8" O.D.)	10.260	1	400 3803
WASHER, Plain.....	75/	SIX.....	17.814	1	400 1095
WASHER, Plain.....	74	V8	17.814	1	400 1104
WASHER, Plain.....	75	V8... (7/8" O.D.)	17.814	1	400 1095
WASHER, Plain.....	75	V8... (11/16" O.D.)	17.814	1	400 1102
NUT, Hexagon.....	74	17.406	1	G120377
NUT, Hexagon.....	75/	SIX.....	10.260	AR	400 3909

ELECTRICAL - INSTRUMENTS

3.018

3.018-3	ATTACHING PARTS, Alternator Bracket To Cylinder Block				
	BOLT, Hexagon	74	SIX ... (7/8" Long)	17.038	2 G180121
	BOLT, Hexagon	75/	SIX ... (1-3/4" Long)	17.038	1 G180137
	SCREW, Machine	75/	SIX (LAC) ... (5/8" Long)	17.629	1 G274882
	BOLT, Hexagon	74	V8 ... (2-1/4" Long)	17.038	1 G180132
	BOLT, Hexagon	76	V8 ... (1" Long)	17.038	1 G180122 NA
	BOLT, Hexagon	76	V8 ... (5-1/4" Long)	17.038	1 G192406
	BOLT, Hexagon	76	V8 ... (5-3/4" Long)	17.038	1 G215511
	SCREW, Machine	75/	SIX (WAC) ... (7/8" Long)	17.629	1 G274474
	WASHER, Plain	74	V8	17.406	1 G120394
	WASHER, Lock	74	SIX	17.814	2 G120392
	WASHER, Lock	74	V8	17.814	1 G120383
	WASHER, Lock	76	V8	10.260	2 400 3803
	NUT, Hexagon	74	V8	17.820	1 G120369
3.018-4	BRACKET, Alternator Belt Tension Adjusting				
	75/	SIX (Used With American Air)			1 812 6187
	75	V8			1 321 8205
	76	V8			1 322 7677
3.018-4a	ATTACHING PARTS, Alternator Adjusting Bracket				
	BOLT, Hexagon	76	V8	17.038	1 G274101
	WASHER, Lock	76	V8	10.260	1 400 3803
3.018-5a	ATTACHING PARTS, Alternator Front Bracket Through Water Pump To Block				
	STUD	74	SIX	17.718	1 G191991
	BOLT, Hexagon	74	SIX	17.038	1 G180079
	NUT, Hexagon	74	SIX	17.406	1 G120368
	WASHER, Lock	74	SIX	17.820	2 G120214
3.018-6	BOLT, Alternator Pivot Mounting				
	75	10-20-40 (V8)			1 321 8204
	76	V8			1 400 5586
3.018-6a	ATTACHING PARTS, Alternator To Pivot				
	WASHER, Plain	75	V8	17.814	1 400 1120
	BOLT, Hexagon	75	V8	17.038	1 G179849
3.018-8	SUPPORT, Alternator Bracket Upper				
	75/	SIX (WAC)			1 322 4478
	74	V8			1 319 1837
3.018-9	ATTACHING PARTS, Upper Support To Cylinder Head				
	BOLT, Hexagon	74	V8	17.038	1 G180144
	BOLT, Hexagon	75/	SIX (WAC) ... (3-1/8" Long)	17.	1 G189303
	SCREW, Machine	75/	SIX (WAC) ... (1" Long)	17.629	1 G274195
	WASHER, Lock	75/	SIX (WAC)	10.260	1 400 3803
	WASHER, Lock	74	V8	17.820	1 G131100
	WASHER, Plain	74	V8	17.814	1 400 1116
3.018-10	SUPPORT, Alternator Bracket Lower				
	74	V8			1 318 5546
3.018-11	ATTACHING PARTS, Lower Bracket To Alternator				
	BOLT, Hexagon	74	V8	17.038	1 G120229
	NUT, Hexagon	74	V8	17.406	1 G120376
	WASHER, Plain	74	V8	17.814	1 G120393
	WASHER, Lock	74	V8	17.820	1 G120214
3.018-15	ATTACHING PARTS, Alternator To Adjusting Strap				
	BOLT, Hexagon	74 (Use G120229)	17.	1 G180078
	WASHER, Plain	74		1 400 1095
	BOLT, Hexagon	76	V8	17.	1 G180124
	WASHER, Lock	74	17.820	1 G120214
	WASHER, Plain	76	V8		1 400 1104
	WASHER, Lock	76	V8	10.260	1 400 3803

3.018

ELECTRICAL - INSTRUMENTS

3.018-16	ATTACHING PARTS, Alternator Wire Harness To Terminals				
	WASHER, Plain..... 74/	17.814	1	G120385	
	WASHER, Lock..... 74/	17.820	1	G121744	
	NUT, Hexagon..... 74/	17.412	1	G271172	
3.018-18	SPACER, Alternator Pivot				
	76 V8		1	322 7678	
3.019-1	REGULATOR, Alternator Voltage				
	74		1	322 3250	
	76 V8		1	545 6934	
	76 V8		1	322 7716	
3.019-2	ATTACHING PARTS, Voltage Regulator To Wheelhouse				
	SCREW, Machine..... 74	17.598	3	G454787	
	SCREW, Machine..... 76 V8	3.196	3	400 4801	
3.020-1	MOTOR, Starting (For Components Refer To Chart Index Page Cr 3 - 1)				
	74/		1	321 2235	
3.020-2	ATTACHING PARTS, Starting Motor To Housing				
	BOLT, Hexagon..... 74/ (1-3/16" Long)	16.040	2	400 1884	
	BOLT, Hexagon..... 74/ (1-1/2" Long)	10.260	1	400 4009	
3.020-8	CABLE, Solenoid To Starting Motor				
	74/		1	943 089	
3.022-1	SWITCH, Automatic Transmission Neutral Safety And Backup Lamp				
	74/75 10-20-40 (LHD-WHT)		1	535 0453	
	76 WHT		1	535 4936	
3.022-2	ATTACHING PARTS, Switch To Steering Column				
	SCREW, Taper..... 74/ 10-20-40 (LHD-WHT)	3.319	2	400 4064	
3.022-4	HARNESS, Neutral Safety Switch And Automatic Transmission				
	74/ 10-20-40 (LQT)	6.665	1	535 0253	
	74/ 10-20-40 (WQT)	6.665	1	535 0254	
3.022-5	RETAINER, Neutral Safety Switch (Grommet)				
	74 10-20-40 (LHD-WHT)	3.319	1	321 0208	
3.024-1	RELAY, Starting Motor (Solenoid)				
	74		1	318 0465	
	75/		1	322 5629	
3.024-2	ATTACHING PARTS, Relay To Splash Apron				
	SCREW, Machine..... 74/	3.196	2	400 4801	
3.024-3	ATTACHING PARTS, Starter Solenoid Switch Terminal				
	NUT, Hexagon..... 74/ (5/16"-24)	17.412	2	G271187	
	NUT, Hexagon..... 74/ (10/32" I.D.)	17.412	2	G271169	
	WASHER, Lock..... 74/	17.814	1	G136857	
3.030-1	DISTRIBUTOR (For Components Refer To Chart Index Page Gr 3 - C 1)				
	74 (Delco 1110529) SIX		1	322 3014	
	74 (Delco 1112179) 304		1	321 7798	
	74 (Delco 1112112) 360		1	321 5826	
	74 (Delco 1112215) 360-401		1	321 9196	
	75 (Prestolite IDJ-4002B) SIX (LEGR)		1	322 4968	
	75 (Prestolite IDJ-4002C) SIX (WEGR)		1	322 4969	
	75 (Prestolite IGJ-4001B) 304 (WMT)		1	322 4965	
	75 (Prestolite IDJ-4001C) 360-401 (WMT)		1	322 5295	
	75 (Prestolite IDJ-4001) 360-401 (WHT)		1	322 4746	
	76 (Prestolite IDJ-4002E) SIX		1	322 7331	
	76 (Prestolite IDJ-4001G) 304 (WMT)		1	322 8264	

ELECTRICAL - INSTRUMENTS

3.048

	76 (Prestolite IDJ-4001E) 304 (WHT-Except Calif.)	1		322 8263
	76 (Prestolite IDJ-4001G) 304 (WHT-Calif.)	1		322 8264
	76 360-401 (WMT-Except Calif.)	1		322 8263
	76 360-401 (WMT-Calif.)	1		322 8265
	76 (Prestolite IDJ-4001E) 360-401 (WHT)	1		322 8265
3.031-1	CONTACT SET, Ignition			
	74 SIX	1	320 4202	
	74 V8	1	320 0197	
3.032-1	CAP, Distributor			
	74 SIX	1	448 8091	
	75/ SIX	1	812 5447	
	74 V8	1	320 0192	
	75/ V8	1	812 5448	
3.033-1	CONDENSER, Distributor			
	74	1	320 4584	
3.035-1	ROTOR, Distributor			
	74 SIX	1	320 4198	
	75 SIX	1	812 5441	
	74 V8	1	320 4216	
3.039-1	CLAMP, Distributor			
	74/ SIX	1	317 3227	
	74/ V8	1	318 0929	
3.039-2	ATTACHING PARTS, Clamp To Block Or Front Engine Cover			
	BOLT, Hexagon 74/ SIX	17.038	1	G180079
	BOLT, Hexagon 74/ V8	17.038	1	G180123
3.039-5	GASKET, Distributor			
	74/	1	318 1288	
3.042-1	GEAR, Distributor (On Distributor - Refer To Chart Index Page Gr 3 - C 1)			
3.042-2	GEAR, Distributor (On Camshaft)			
	74/ V8	1	448 6635	
3.042-3	ATTACHING PARTS, Gear To Camshaft			
	KEY, Woodruff 74/ V8	17.344	1	G124546
3.044-1	CONTROL, Electronic Ignition			
	75/	1	322 4964	
3.044-2	ATTACHING PARTS, Electronic Control Unit To Panel			
	SCREW, Machine 75	29.131	2	400 1814
	SCREW, Tapping 76	17.671	4	400 1042
3.044-3	WIRE, Electronic Ignition Control Ground			
	75/	1	545 6793	
3.046-1	CONTROL, Distributor Vacuum			
	74 SIX	1	812 2350	
	75/ SIX	1	812 5438	
	74 304	1	812 0586	
	74 360-401	1	812 2347	
	75/ V8 (WMT)	1	812 5436	
	75/ V8 (WAT)	1	812 5437	
3.048-1	TUBE, Distributor Vacuum Control			
	74 (Distributor To Transmission Controlled Spark Solenoid) SIX	3.051	1	321 9095

3.048

ELECTRICAL - INSTRUMENTS

3.048-1a	ATTACHING PARTS, Distributor Tube To Vacuum Tube				
	"G" CLIP 75/	1	313	7319
	"S" CLIP..... 74/	8.101	AR	316 8875
	STRAP, Tie..... 74/	3.196	AR	318 1008
3.048-3	HOSE, Distributor Vacuum Control To Tube (Bulk-Order In Feet)				
	74 SIX.....	4.701	AR	320	3440
	75/	4.701	AR	812	5812
	76 80-90 (WMT-Calif.)	1	545	9380
	76 90 (WHT-Calif.)	1	545	9381
3.050-1	SWITCH, Distributor Thermostatic Vacuum				
	74 (321 6448 Molded On Switch)	1	321	6448
	75/ (322 6361 Molded On Switch).....	4.704	1	322	6361
3.050-3	HOSE, Vacuum Valve Or Distributor To Tube (Bulk-Order In Feet)				
	74	4.701	AR	320	3440
	75/	3.051	AR	812	5995
3.050-4	HOSE, Vacuum Valve To Tee (Bulk-Order In Feet)				
	74 V8	4.701	AR	320	3440
	75/	3.051	AR	812	5995
3.050-6	HOSE, Diverter Valve To Tee (Bulk-Order In Feet)				
	74 V8 (WELP)	4.701	AR	320	3440
	75/	3.051	AR	812	5995
3.050-7	HOSE, Tee To Manifold Vacuum (Bulk-Order In Feet)				
	74 V8	4.701	AR	320	3440
	75/	3.051	AR	812	5995
3.050-8	HOSE, Thermo Vacuum Switch To Cold Coolant Switch (Bulk-Order In Feet)				
	74 V8 (LHDC)	4.701	AR	320	3440
	75/	3.051	AR	812	5995
3.051-1	SWITCH, Transmission Control Spark (On Transmission)				
	74/ W3ST	6.010	1	321	1322
3.051-4	HARNESS, Jumper Assembly Vacuum Control Solenoid To Temperature Override Switch				
	74/75 20-40 (RHD).....	1	535	0120
	74/75 80.....	1	535	0319
3.051-6	SOLENOID, Distributor Vacuum Control (Valve)				
	74/	1	321	8737
3.051-7	BRACKET, Distributor Vacuum Control Solenoid				
	74/	1	321	8860
3.051-8	ATTACHING PARTS, Distributor Vacuum Control Solenoid To Bracket				
	SCREW, Tapping..... 74/	17.671	1	G271444	
3.051-9	ATTACHING PARTS, Distributor Vacuum Control Solenoid Bracket And Accelerator Cable Bracket To Intake Manifold				
	SCREW, Machine..... 74/	17.626	1	G456938	
3.051-10	ATTACHING PARTS, Solenoid To Coil Bracket				
	SCREW, Tapping..... 74/ V8	17.671	1	G271444	
3.051-11	HOSE, Distributor Vacuum Control Solenoid To Tube (Bulk-Order In Feet)				
	74 SIX.....	4.701	AR	320	3440
	75 SIX (Orange).....	3.051	AR	812	5995
	76 SIX.....	1	322	8140

ELECTRICAL - INSTRUMENTS

3.082

3.051-12	HOSE, Distributor Vacuum Control Solenoid To Carburetor Vacuum		4.701	AR	320 3440
	74			
	75/	3.051	AR	812 5995
3.051-13	HOSE, Distributor Vacuum Control Solenoid To Thermal Switch And Coolant Switch (Bulk-Order In Feet)		4.701	AR	320 3440
	74	V8			
	75/	3.051	AR	812 5995
3.051-14	TUBE, Distributor Vacuum Control To Coolant Temperature Override Switch		1	535 2831
	74/	SIX			
3.051-15	TUBE, Coolant Temperature Override Switch Hose To Transmission Controlled Spark Switch Hose		4.703	1	535 2833
3.051-16	HOSE, Coolant Temperature Override Switch To Tubes (Bulk-Order In Feet)		4.701	AR	320 3440
	74	SIX			
	75/	SIX	3.051	AR	812 5995
3.051-17	CLIP, Vacuum Tube		8.101	AR	316 8875
	74/	SIX			
3.052-1	SWITCH, Speedometer Controlled Spark		1	535 1624
	74	10-20-40 (WHT)			
	76	90 (WHT-Calif.)	1	535 1624
3.052-2	ATTACHING PARTS, Switch To Dash		17.412	1	G271172
	NUT, Hexagon	74 WHT			
	NUT, Hexagon	76 90 (WHT-Calif.)	17.	1	G271184
3.056-1	COIL, Ignition		1	320 8861
	74			
	75/	1	812 5028
3.056-2	ATTACHING PARTS, Ignition Coil Clamp To Engine		17.629	2	G273867
	SCREW, Machine	74/ SIX			
	BOLT, Hexagon	74/ V8	17.038	1	G9428638
	WASHER, Lock	74/ V8	2	400 3808
3.056-3	ATTACHING PARTS, Ignition Coil And Clamp To Bracket		17.671	1	G271444
	SCREW, Tapping	74/ 304-360			
3.056-4	CLAMP, Ignition Coil (Fits Around Coil)		1	320 2198
	74/			
3.060-1	BRACKET, Ignition Coil		1	321 0425
	74/75	V8			
	76	V8	1	322 8268
3.082-1	BOX, Battery Tray		1	968 217
	74/75	10-20-40 (258)			
	76	10-20-40 (Six)			
	74/75	10-20-40 (LHD-360)(LHD-401)			
	76	10-20-40 (V8)			
	74/75	80 (LHD)			
	74/75	80 (RHD)			
	76	80-90 (LHD)			
	76	80-90 (RHD)	1	545 9860
3.082-2	ATTACHING PARTS, Battery Tray To Radiator Baffle Assembly		12.075	2	400 4455
	SCREW, Hexagon	74/ 10-20-40			
3.082-3	ATTACHING PARTS, Battery Tray To Splash Apron		17.629	3	G423561
	BOLT, Hexagon	74/ 80			
	WASHER, Plain	74/ 10-20-40 (LHD-360)(LHD-401)			
	WASHER, Plain	74/ 80			
	NUT, Hexagon	74/ 10-20-40			

3.082

ELECTRICAL - INSTRUMENTS

3.082-4 SUPPORT, Battery Tray			
74/	10-20-40 (LHD-360)(LHD-401)	1	977 576
74/75	80 (RHD)	1	987 569
76	80-90 (RHD)	1	545 9842
74/	(Right) 80 (LHD)	1	970 432
74/	(Inner) 80 (LHD)	1	986 491
3.082-5 ATTACHING PARTS, Battery Tray To Support			
SCREW, Hexagon	74/ 10-20-40 (LHD-360)(LHD-401)	AR	400 4455
BOLT, Hexagon	76 80-90 (RHD)	17.038	1 G180077
WASHER, Plain	74/ 10-20-40 (LHD-360)(LHD-401)	AR	664 607
WASHER, Plain	74/ 80 (LHD)	17.814	1 G120393
WASHER, Plain	76 80-90 (RHD)	17.814	1 G120393
NUT, Hexagon	74/ 10-20-40	AR	400 4866
NUT, Hexagon	74/ 80 (LHD)	17.412	1 G271184
NUT, Hexagon	76 80-90 (RHD)	17.412	1 G271184
3.082-6 ATTACHING PARTS, Support To Battery Box			
SCREW, Machine	74/ 80 (RHD)	17.629	1 G423561
SCREW, Machine	76 80-90 (LHD)	17.629	3 G423561
WASHER, Plain	74/ 80	17.814	1 G120393
NUT, Hexagon	74/ 80 (LHD)	17.412	1 G271184
NUT, Hexagon	74/ 80 (RHD)	17.406	1 G120376
3.082-6a ATTACHING PARTS, Support To Body			
BOLT, Hexagon	74/ 80 (LHD)	17.038	1 G180077
SCREW, Machine	74/ 10-20-40	17.598	AR G454787
WASHER, Plain	74/ 80 (LHD)	17.814	2 G120393
NUT, Hexagon	74/ 80 (LHD)	17.412	1 G271184
3.082-7 STABILIZER, Battery Support			
74/	80 (LHD)	3.084	1 972 419
74/	80 (RHD)		1 989 430
3.082-8 ATTACHING PARTS, Battery Stabilizer			
SCREW, Machine	74/ 80	17.629	1 G423561
3.084-1 BRACKET, Battery Hold Down			
74/75	10-20-40 (Six)	1	938 749
74/75	10-20-40 (V8)	1	919 824
74/75	80 (LHD)	1	919 824
74/74	80 (RHD)	1	987 540
3.084-2 PLATE, Reinforcement (Battery Hold Down)			
74/	10-20-40	1	973 356
3.095-1 CLAMP, Bolt Battery Hold Down			
74/75	10-20-40 (Six)	1	938 773
74/75	(Rear) 10-20-40 (V8)	1	928 100
74/75	(Front) 10-20-40 (V8)	1	947 990
74/75	80	2	916 878
76		1	322 6119
3.095-2 ATTACHING PARTS, Battery Hold Down To Tray			
PIN, Cotter	74/75	3.200	2 G121222
NUT, Hexagon	74/75	3.082	2 400 4866
3.095-3 ATTACHING PARTS, Battery Clamp Bolt To Grille Panel			
SCREW, Machine	76	1	400 3930
U-BOLT	74/ 10-20-40	1	973 355
NUT, Hexagon	74/ 10-20-40	17.412	2 G271163

3.105-1	HORN, Dual				
	74	10-20-40.....	1	535 0064
	75/	10-20-40 (Low Pitch).....	1	545 6794
	75/	10-20-40 (High Pitch).....	1	545 6795
3.105-2	HORN, Single				
	74	1	545 0565
	75/	10-20-40 (Low Pitch).....	1	545 6794
	75/	80-90 (Double Connector).....	1	545 0565
	76	80-90 (Single Connector).....	1	545 6794
3.105-5	ATTACHING PARTS, Horn To Splash Apron				
	SCREW, Machine.....	74/.....	3.196	2	400 4801
3.105-6	HARNESS, Relay To Horn				
	74	10-20-40 (Used With Dual Horn).....	1	999 600
	74	10-20-40 (Used With Single Horn).....	1	545 0155
3.106-1	HORN KIT, Low Sound Horn				
	74	10-20-40.....	1	812 4834
	74	80.....	1	812 4841
3.106-2	HORN, Low Sound				
	74	3.105	1	322 3954
3.106-3	ATTACHING PARTS, Horn To Splash Apron				
	SCREW, Machine.....	74.....	17.629	1	G273573
3.106-4	SWITCH, Low Sound Horn				
	74	3.158	1	359 8001
3.106-5	ESCUTCHEON, Horn Switch				
	74	3.105	1	367 9893
3.106-6	HARNESS, Switch To Relay				
	74	1	535 3412
3.106-7	HARNESS, Low Sound Horn Relay To Horn And Relay				
	74	10-20-40.....	1	535 3413
	74	80.....	1	535 3418
3.106-8	GROMMET, Harness Thru Dash				
	74	10-20-40.....	13.020	1	929 814
3.106-9	ATTACHING PARTS, Harness To Engine Compartment				
	STRAP.....	74/.....	AR	322 3237
3.125-1	RELAY, Horn				
	74	10-20-40.....	1	318 6899
	75	10-20-40.....	1	545 6647
	76	1	545 6647
3.125-2	ATTACHING PARTS, Relay To Splash Apron				
	SCREW, Machine.....	74.....	3.196	2	400 4801
	NUT, Hexagon.....	74 (1/4"-20).....	17.412	2	G271178
3.130-1	SWITCH, Ignition (Incl. Cylinder)				
	74	10-20-40 (RHD).....	1	931 697
	74	80 (Used Less Brake Pressure Lamp).....	1	931 697

3.130

ELECTRICAL - INSTRUMENTS

3.130-2	SWITCH, Ignition (Less Cylinder)				
	74/ 10-20-40 (LHD-WHT-WAW)	1	319	7598	
	74/ 10-20-40 (LHD-LAW)	1	812	2681	
	74 10-20-40 (RHD)	1	929	960	
	74 80 (Used Less Brake Pressure Lamp)	1	929	960	
	75 80 (Used Less Brake Pressure Warning Lamp)	1	545	4951	
	74 80 (Used With Brake Pressure Lamp)	1	991	659	
	75 80 (Used With Brake Pressure Warning Lamp)	1	545	4952	
	76 80-90	1	812	2681	
3.130-2a	ATTACHING PARTS, Ignition Switch To Column				
	SCREW, Tapping..... 74/ 10-20-40 (LHD)	2	448	7772	
	SCREW, Tapping..... 76 80-90	2	448	7772	
3.130-3	BEZEL, Ignition Switch				
	74 10-20-40 (RHD)	1	929	964	
	74 80	1	929	964	
3.130-6	SECTOR, Ignition Switch Actuator				
	74/ 10-20-40 (LHD-LAW)	1	812	0097	
	74/ 10-20-40 (LHD-WHT-WAW)	1	448	7826	
	76 80-90	1	812	0097	
3.131-1	ACTUATOR, Ignition Switch (Rod)				
	74/ 10-20-40 (LHD-WF-GS-LAW)	1	448	7782	
	74/ 10-20-40 (LHD-WHT-WAW-* 3-11)...(Less Rack)	1	448	8352	
	74/ 10-20-40 (LHD-WHT-WAW-* 3-12)...(Incl. Rack)	1	812	6162	
	76 80-90	1	448	7782	
3.135-1	CYLINDER, Ignition Switch Lock (Uncoded)(Less Keys)				
	74-75 80 (Used Less Brake Pressure Lamp)	1	812	3448	
3.135-2	CYLINDER, Ignition Switch Lock (Uncoded)(Less Keys)				
	74/ 10-20-40 (RHD)	1	812	2919	
	74-75 80 (Used With Brake Pressure Lamp)	1	812	2919	
3.135-3	CYLINDER, Ignition Switch (Uncoded)(Less Tumblers, Springs, Retainer And Keys)				
	74/ 10-20-40 (LHD)	1	812	0081	
	76 80-90	1	812	0081	
3.135-4	KEY, Ignition Switch Lock (Blank)				
	74/ 10-20-40	23.085	2	364	1914
	74 80 (Used Less Brake Pressure Lamp)	3.130	2	960	338
	74-75 80 (Used With Brake Pressure Lamp)	23.085	2	364	1914
	76 80-90		2	364	1914
3.135-5	SPRING, Ignition Switch				
	74 80	3.130	1	931	729
	74 10-20-40 (RHD)	3.130	1	931	729
3.135-6	RING, Ignition Switch Cylinder Antitheft				
	74 10-20-40		1	448	7659
	76 80-90		1	448	7659
3.135-7	WASHER, Ignition Cylinder Wave				
	74/ 10-20-40		1	448	7660
	76 80-90		1	448	7660
3.135-8	TUMBLER, Ignition Switch Cylinder				
	74/ (No. 1) 10-20-40 (LHD)	AR	448	7670	
	74/ (No. 2) 10-20-40 (LHD)	AR	448	7671	
	74/ (No. 3) 10-20-40 (LHD)	AR	448	7672	
	74/ (No. 4) 10-20-40 (LHD)	AR	448	7673	
	74/ (No. 5) 10-20-40 (LHD)	AR	448	7674	
	76 (No. 1) 80-90	AR	448	7670	

ELECTRICAL - INSTRUMENTS

3.158

76	(No. 2) 80-90.....	AR	448 7671
76	(No. 3) 80-90.....	AR	448 7672
76	(No. 4) 80-90.....	AR	448 7673
76	(No. 5) 80-90.....	AR	448 7674
3.135-9	RETAINER, Ignition Switch Cylinder Tumblers			
74/	10-20-40 (LHD).....	1	448 7675
76	80-90.....	1	448 7675
3.135-10	SPRING, Ignition Switch Cylinder Tumblers			
74/	10-20-40 (LHD).....	5	448 7676
76	80-90.....	5	448 7676
3.140-1	SWITCH, Ignition Key Alarm			
74/	10-20-40 (LHD-LAW).....	1	321 1423
74/	10-20-40 (LHD-WHT-WAW).....	1	321 1424
76	80-90.....	1	321 1423
3.140-2	CLIP, Alarm Switch Retaining			
74/	10-20-40 (LHD-LAW).....	1	448 7713
74/	10-20-40 (LHD-WHT-WAW).....	1	448 7853
76	80-90.....	1	448 7713
3.145-1	SWITCH, Lighting (Headlamp And Instruments)			
74/	1	545 0558
3.145-3	BEZEL, Lighting Switch			
74/	1	987 911
3.145-4	NUT, Lighting Switch To Instrument Panel			
74/	1	931 688
75/	1	400 0056
3.150-1	KNOB, Lighting Switch			
74/75	1	545 0047
76	1	545 7882
3.155-1	FUSE			
75/	(2.5 Amp.)... (5/8" Long).....	AR	812 5975
74/	(3 Amp.)... (1-1/4" Long).....	17.300	AR	G106652
74/	(9 Amp.)... (7/8" Long).....	17.300	AR	G147684
74/	(10 Amp.)... (1-1/4" Long).....	17.300	AR	G117142
74/	(14 Amp.)... (1-1/16" Long).....	17.300	AR	G147685
74/	(15 Amp.)... (1-1/4" Long).....	17.300	AR	G120151
74/	(20 Amp.)... (1-1/4" Long).....	17.300	AR	G106653
74/	(25 Amp.)... (1-1/4" Long).....	17.300	AR	G455844
3.155-2	BLOCK, Fuse			
74	10-20-40.....	1	989 942
75	10-20-40.....	1	545 6632
75	80.....	1	545 6614
76	1	545 9549
3.158-1	SWITCH, Headlamp Dimmer			
74/	1	931 201
3.158-2	ATTACHING PARTS, Switch To Floor Pan			
NUT, Snap.....	74/.....	2	985 640
SCREW, Tapping.....	74/.....	17.670	2	G9415260
3.158-3	ATTACHING PARTS, Dimmer Switch Harness To Chassis			
SCREW, Machine.....	74/ 80-90.....	17.660	1	G163177
CLIP.....	74/ 80-90.....	22.050	1	944 831
NUT, Snap.....	74/ 80-90.....	1	545 0280
3.158-4	BOOT, Headlamp Dimmer Switch Cover			
74	80.....	1	535 0359

3.163

ELECTRICAL - INSTRUMENTS

3.163-1 HARNESS, Rear End Lighting And Signals (Cross Harness)			
74/75	10 (LHD-Used Less Rear Speakers)	1	545 0036
75/	10	1	545 9063
75	10	1	545 9063
74	14-15 (RHD)	1	932 657
3.163-2 HARNESS, Body Wire (Frame)			
74	10 (LHD)	1	989 928
74	10-20-40 (RHD)	1	545 0300
75	10 (Used Less Rear Speakers Or Electric Defoaaer)	1	545 4313
75	10 (Used With Rear Speakers And Electric Defoaaer)	23.320	545 6574
76	10	1	545 9888
74	20-40 (LHD)	1	545 0037
75/	20-40	1	545 6577
76	80-90	1	545 7201
74	83	1	535 0184
75	83	1	535 3291
74	84	1	535 0189
75	84	1	535 3292
3.163-3 ATTACHING PARTS, Harness To Engine Rear Crossmember			
CLIP, Closed	74 20-40	17.134	1 G120522
SCREW, Machine	74 20-40	17.598	1 G159920
NUT, Hexagon	74 20-40	17.412	1 G271166
STRAP, Tie	74 10-20-40	4.142	2 998 604
3.163-4 RETAINER, Body Wire Harness Thru Pillar Reinforcement			
74/75		2	961 477
3.163-5 ATTACHING PARTS, Body Wire Harness Retainer			
SCREW, Tapping	74/75	17.660	4 G161857
3.164-1 HARNESS, Front End Lighting			
74	10 (RHD)	1	545 4854
74	14-15	1	535 2239
75	14-15	1	545 4309
76	14-15	1	545 9221
74	16-17-20-40 (LHD)	1	989 850
75	16-17-20-40	1	545 4312
76	16-17-20-40 (* 3-15)	1	545 9222
76	16-17-20-40 (* 3-16)	1	545 9221
74	80	1	545 1851
75	80	3.173	1 535 3299
76	80-90 (Used With Horn That Has Double Connector)	1	545 9121
76	80-90 (Used With Horn That Has Single Connector)	1	545 9807
3.164-2 ATTACHING PARTS, Front End Lighting Harness To Side Panel			
CLIP (Metal)	74/ 80-90	3.165	1 945 201
3.164-3 GROMMET, Headlamp Harness Thru Panel			
75/	80-90	27.038	1 806 459
3.165-1 HARNESS, Instrument Panel			
74	10-20-40 (LHD)	1	535 2241
74	10-20-40 (RHD)	1	545 4853
75	10-20-40 (LER)	1	545 6601
75	10 (WER)	1	545 6602
76	10-20-40	1	545 9269
74	80 (LHD-Used Less Oil And Amp. Gauges)	1	545 1850
74	80 (LHD-Used With Oil And Amp. Gauges)	1	545 1902
74	80 (RHD-Used Less Oil And Amp. Gauges)	1	545 1854
74	80 (RHD-Used With Oil And Amp. Gauges)	1	545 1903
75	80 (LHD)	1	535 3294
75	80 (RHD)	1	545 7702
76	80-90 (LHD)	1	545 7205
76	80-90 (RHD)	1	535 9631

3.165-1b HARNESS, Engine Compartment Wire

SIX

74	10-20-45 (LHD-Used Less Generator)	1	545 5021
74	10-20-40 (LHD-Used With Generator)	1	535 2368
74	10-20-40 (RHD-Used Less Generator)	1	998 900
74	10-20-40 (RHD-Used With Generator)	3.005	1 999 257
75/	10-20-40 (Six)	1	545 6540
74	46 (LHD-Used Less Generator)	1	535 0429
74	80 (Used Less Oil And Amp. Gauges)	1	535 0220
74	80 (Used With Oil And Amp. Gauges)	1	535 0250
75	80	1	535 3566
76	80-90 (WMT)	1	545 9393
76	90 (WHT)	1	545 9392

V8

74	10-20-45 (360-Except Calif.)	1	545 5020
74	10-20-45 (360-WHT-Calif.)	1	535 2242
74	10-20-45 (360-WMT-Calif.)	3.115	1 535 0430
74	10-20-45 (401)	1	535 2242
75	10-20-40 (V8)	1	545 6940
76	10-20-40	1	545 9283
74	46	3.115	1 535 0430
74	80 (Used Less Oil And Amp. Gauges)	1	535 0222
74	80 (Used With Oil And Amp. Gauges)	1	535 0251
75	80	1	545 6938
76	80-90 (WMT)	1	545 9296
76	90 (WHT)	1	545 9295

3.165-2 CONNECTOR, Wiring

74	(6 Wire)	AR	932 952
74	(7 Wire)	AR	932 358
74	(11 Wire)	AR	933 695

3.165-2a CONNECTOR, Instrument Wiring Harness To Fuse Block And Dash

74/	1	319 7995
-----	-------	---	----------

3.165-3 INSULATOR, Wire (Male)

74	(1 Wire) 10-20-40 (RHD)	(Use 321 9668)	AR	932 350
74	(5 Wire)	AR	938 631	
74	(1 Wire) 80	(Use 321 9668)	AR	932 350

3.165-4 INSULATOR, Wire (Female)

74	(1 Wire)	AR	932 370
74	(2 Wire-1 Horizontal-1 Vertical-Stacked)	AR	932 369
74	(3 Wire-Horizontal)	AR	932 367

3.165-5 ATTACHING PARTS, Instrument Panel Harness To Ground

SCREW, Machine	75	10-20-40	17.598	1	G456334
SCREW, Machine	74/	80-90	17.610	1	G9417333
NUT, Hexagon	75	10-20-40	17.412	1	G271166
NUT, Hexagon	74/	80-90	17.412	1	G271166

3.165-7 TERMINAL, Wire (Female)

74	(1 Wire-Brass)... (25/32" Long)	AR	998 697
74	(1 Wire-Brass)... (27/32" Long)	AR	994 560
74	(2 Wire-Headlamp Switch)	AR	998 698

3.165-8 TERMINAL, Wire (Insulated)

74	(Blue)	AR	991 641
74	(Red)	AR	991 640

3.165-10 TERMINAL, Wire (Spade)

74	(Open)	AR	535 0131
----	--------------	----	----------

3.165-11 TERMINAL, Wire (Slip)

74	AR	642 377
----	-------	----	---------

3.165

ELECTRICAL - INSTRUMENTS

3.165-12	TERMINAL, Connector (Male)						
	74	(1 Wire-Brass).....	AR		998	693
3.165-12a	TERMINAL, Jumper (Male)						
	74/	10-20-40 (WMT).....	1		318	6890
3.165-13	TERMINAL, Connector (Female)						
	74	(3 Wire-Tinned).....	AR		998	690
	74	(3 Wire-Brass).....	AR		994	561
3.165-14	ATTACHING PARTS, Harness To Dash Panel						
	SCREW, Tapping.....	74/ 80-90.....	17.660	1		812	0052
	STRAP (Nylon).....	74/.....	AR		535	0352
3.165-15	ATTACHING PARTS, Harness To Instrument Panel						
	CLIP (Nylon).....	74/.....	1		926	878
	CLIP (Metal).....	75 10-20-40.....	1		945	201
3.165-16	ATTACHING PARTS, Harness To Splash Apron						
	STRAP (Nylon).....	74/.....	AR		927	663
3.165-17	ATTACHING PARTS, Harness To Radiator Baffle						
	STRAP (Nylon).....	74.....	AR		927	663
3.165-18	ATTACHING PARTS, Engine Harness To Water Pump						
	STRAP.....	74/.....	4.142	AR		927	557
3.165-20	ATTACHING PARTS, Cross Harness To Rear Cross Sill						
	STRAP (Nylon).....	74/.....	AR		927	663
3.165-21	ATTACHING PARTS, Engine Harness And/Or Carburetor Solenoid Wire Over Rocker Arm Cover						
	CLIP.....	74/ (Rubber Covered)... (3/8" I.D.).....	AR		998	699
	CLIP.....	74/ (Rubber Covered)... (1/2" I.D.).....	AR		535	0435
	CLIP.....	74/ (Rubber Covered)... (11/16" I.D.).....	AR		545	7825
3.165-23	ATTACHING PARTS, Frame Harness To Sidemember						
	CLIP, Flange.....	74 10 (RHD).....	AR		644	106
3.165-24	ATTACHING PARTS, Cross Harness To Rear Crossmember						
	CLIP, Flange.....	74/ 10 (LHD).....	AR		535	0273
	CLIP, Flange.....	74 10 (RHD).....	AR		644	106
	CLIP, Flange.....	74/ 80-90.....	AR		535	0273
	CLIP (Metal).....	74/ 80.....	3		945	201
3.165-25	ATTACHING PARTS, Chassis Harness To Brake Return Bracket						
	STRAP (Nylon).....	74/ 10-20-40.....	AR		927	663
3.165-27	ATTACHING PARTS, Dimmer Switch Harness To Dash						
	CLIP.....	74/ 80-90.....	22.050	1		994	831
3.165-28	ATTACHING PARTS, Harness To Heater Hose, Brake And Fuel Lines						
	STRAP (Nylon).....	74/.....	10.470	AR		318	1008
3.166-1	GROMMET, Wiring						
	74	10-20-40... (1-1/2" I.D.).....	1		545	0075
	74/	10-20-40... (5/8" I.D.).....	AR		662	276
	74	10-20-40 (RHD).....	1		999	847
	74	80.....	AR		998	467
3.166-2	RETAINER, Wiring Harness Grommet						
	74	10-20-40 (RHD).....	1		999	752
	74	80.....	1		999	752
3.166-3	ATTACHING PARTS, Retainer To Dash						
	SCREW, Tapping.....	74 10-20-40 (RHD).....	17.	1		G162007	
	SCREW, Tapping.....	74 80.....	17.	2		G162007	
3.167-1	FUSIBLE LINK, Starter Relay						
	75/	10-20-40.....	1		812	7340
	75/	80-90.....	1		812	7359

ELECTRICAL - INSTRUMENTS

3.228

3.169-1	WIRE ASSEMBLY, Electric Choke				
	74 360-401 (W4B)	1	321	9044	
3.173-1a	WIRE, Headlamp Ground				
	74/ 10-20-40	1	545	0589	
3.196-1	CABLE, Battery Ground (Negative)				
	74/75	1	535	0447	
	76 LHD	1	535	0447	
	76 80-90 (RHD)	1	535	0463	
3.196-3	ATTACHING PARTS, Battery Ground Cable To Cylinder Block Or Bracket				
	BOLT, Hexagon 74/	1	400	4801	
	WASHER, Lock 74/ 80-90 (V8)	17.826	1	G178551	
3.196-3a	ATTACHING PARTS, Battery Ground To Body				
	SCREW, Tapping 75 80	1	400	4801	
3.196-4	CABLE, Battery Ground Jumper To Crossmember				
	74/ SIX	1	946	861	
	74/ V8	1	938	988	
3.196-5	ATTACHING PARTS, Ground Cable To Engine				
	BOLT, Hexagon 75/ SIX	17.038	1	G180120	
	WASHER, Lock 74/ (3/8")	17.826	AR	G178551	
	WASHER, Lock 74/ (7/16")	17.826	AR	G178571	
3.200-2	CABLE, Battery To Starter Relay (On Splash Apron)				
	74/ 10-20-40 (Six)	1	535	0457	
	74/ 10-20-40 (V8)	1	535	0456	
	74/ 80-90 (LHD)	1	535	0457	
	74/ 80 (RHD)	1	919	337	
3.200-3	ATTACHING PARTS, Cable To Wheelhouse				
	CLIP (Nylon) 74/ 10-20-40 (Six-WAC)	1	941	131	
	CLIP (Nylon) 74/ 80-90	2	941	131	
3.213-1	BLOCK, Junction				
	74 (Single Post) 10-20-40 (RHD)	1	938	733	
3.213-2	ATTACHING PARTS, Junction Block To Panel				
	SCREW, Tapping 74 RHD ... (14-10 x 1/2")	3.065	2	699 614	
	SCREW, Tapping 74 (1/4"-20 x 1/2")	17.598	2	G191985	
3.213-3	ATTACHING PARTS, Wires To Junction Block Terminal				
	NUT, Hexagon 74 10 (RHD)	17.412	3	G271169	
3.215-1	BULB				
	74/ (GE 53)(1 C. P.)(Miniature Bayonet Type)	1	G131282		
	74/ (GE 57)(2 C. P.)(Miniature Bayonet Type)	1	G127934		
	74/ (GE 194)(2 C. P.)(Wedge Base Type)	1	994	037	
	74/ (GE 1156)(32 C. P.)(Single Contact Bayonet Type) .. (Use 320 9543)	AR	942	498	
	74/ (GE 1157)(32 C. P.)(Double Contact Index Type-Clear)	AR	938	247	
	74/ (GE 1157NA)(3 C. P. And 32 C. P.)(Amber)	2	812	2110	
	74/ (GE 1445)(3/4 C. P.)(Single Contact Bayonet Type)	AR	320	4552	
	74/ (GE 1816)(3 C. P.)(Miniature Bayonet Type)	1	961	058	
	75/ (GE 1895)(2CP)(Miniature Bayonet Type)	2	448	7366	
	74/ (GE 6014)(Sealed Beam Single Headlight)	2	812	4687	
	76 (GE 1893)(2 C. P.)(Miniature Bayonet Type)	AR	345	1933	
	74/ (Tung Sol 7002)(Export-Sealed Beam Single Headlight-Clear)	1	944	909	
3.228-1	WIRE SET, Ignition				
	74 SIX	1	320	7030	
	75/ SIX	1	812	5608	
	74 V8	1	812	2191	
	75/ V8	1	812	5609	

3.230

ELECTRICAL - INSTRUMENTS

3.230-1	SEPARATOR, Ignition Wire				
	74/ V8... (1-19/32" Long).....	2	318 0107	
	74/ V8... (2-23/32" Long).....	1	318 6116	
3.230-2	BRACKET, Ignition Wire Separation				
	76 V8.....	1	322 6495	
	76 80-90 (* 3-14).....	2	546 0087	
3.232-1	WIRE, Distributor To Coil High Tension				
	74 SIX..... (Use 320 7026).....	1	317 4260	
	75/ SIX.....	1	322 5806	
3.245-1	HEADLAMP ASSEMBLY				
	OPEN BACK HEADLAMP				
	74/ 10-20-40 (Except Export)..... 178.....	2	998 960	
	74/ 10-20-40 (Export)..... 178.....	2	998 961	
	74/ 80-90 (Except Export)..... 171.....	2	998 972	
	74/ 80-90 (Export)..... 171.....	2	998 973	
3.245-2	ATTACHING PARTS, Headlamp To Grille				
	SCREW, Machine..... 74/.....	17.660	8	G163210	
	WASHER, Lock..... 74/.....	17.822	8	G138479	
3.248-2	BODY, Headlamp				
	74/ 10-20-40.....	2	812 0381	
	74/ 80-90.....	2	812 1350	
3.252-1	DOOR, Headlamp				
	74/ (Left) 10-20-40.....	1	968 247	
	74/ (Right) 10-20-40.....	1	968 248	
	74/ 80-90 (* 3-13).....	2	958 530	
3.252-3	ATTACHING PARTS, Headlamp Door To Grille				
	SCREW, Machine..... 74/ 10-20-40... (1/2" Long).....	17.592	6	G9413562	
	SCREW, Machine..... 74/ 10-20-40... (5/8" Long).....	2.050	6	969 718	
	SCREW, Machine..... 74/ 80-90.....	17.592	2	G179349	
	NUT, Spring..... 74/ 10-20-40.....	17.421	6	G445397	
3.265-1	SHELL, Headlamp (Unit Mounting Ring)				
	74/ 10-20-40... (Incl. Retainer Ring And Screws).....	2	448 5893	
	74/ 80-90.....	2	812 1351	
3.268-1	SCREW, Headlamp Adjusting				
	74/ 10-20-40.....	4	812 0383	
	74/ 80-90.....	4	908 577	
3.272-1	SPRING, Headlamp Adjusting				
	74/ 10-20-40.....	2	812 0382	
	74/ 80-90.....	2	320 5364	
3.275-1	RING, Headlamp Retaining				
	74/ 10-20-40..... (Use 448 5892).....	2	812 0384	
	74/ 80-90.....	2	812 1349	
3.275-2	SCREW, Headlamp Bulb Retaining Ring				
	74/ 10-20-40.....	6	812 0385	
	74/ 80-90.....	17.680	6	G450211	
3.280-1	BULB, Headlamp (Sealed Beam)				
	74/ (GE 6014-Except Export).....	3.215	2	812 4687	
	74/ (Tung Sol 7002-Export).....	3.215	2	944 909	
3.292-1	LAMP, Parking And Front Directional Signal				
	74/ 14-15.....	2	545 1451	
	74 (Left) 16-17-20-40..... (Use 545 4913).....	1	545 5267	
	75/ (Left) 16-17-20-40 (* 3-15).....	1	545 7327	

ELECTRICAL - INSTRUMENTS

3.300

	76 (Left) 16-17-20-40 (* 3-16)	1	546 0106
	74 (Right) 16-17-20-40..... <i>(Use 545 4913)</i>	1	545 5268
	75/ (Right) 16-17-20-40 (* 3-15)	1	545 7328
	76 (Right) 16-17-20-40 (* 3-16)	1	546 0107
	74 80..... 172	2	989 852
	75/ 80-90.....	2	545 7118
3.292-2	HOUSING ASSEMBLY, Parking And Front Directional Lamp		
	74/ 14-15..... <i>(Ord. 545 1451)</i>	2	545 1989
	74/ (Left) 16-17-20-40 (* 3-15)	1	931 249
	74/ (Right) 16-17-20-40 (* 3-15)	1	931 250
	74 80.....	2	991 298
3.292-2a	ATTACHING PARTS, Housing To Grille		
	NUT, Hexagon..... 74/ 14-15.....	17.412	4 G271166
	NUT, Hexagon..... 74/ 80-90.....	17.412	4 G271163
3.292-3	GASKET, Parking And Front Directional Lamp Lens		
	74/ 16-17-20-40 (* 3-15)	2	931 253
	76 16-17-20-40 (* 3-16)	2	546 0101
	74/ 14-15.....	2	999 744
	74/ 80-90.....	2	991 401
3.292-4	LENS, Parking And Front Directional Lamp (Inner)		
	74/ (Left) 16-17-20-40 (* 3-15)	1	545 5273
	74/ (Right) 16-17-20-40 (* 3-15)	1	545 5274
3.292-5	LENS, Parking And Front Directional Lamp (Outer)		
	74/ (Left) 16-17-20-40 (* 3-15)	1	812 3115
	74/ (Right) 16-17-20-40 (* 3-15)	1	812 3114
3.292-5a	LENS, Parking And Front Directional Signal Lamp		
	74/ 14-15.....	2	999 745
	76 (Left) 16-17-20-40 (* 3-16)	1	546 0102
	76 (Right) 16-17-20-40 (* 3-16)	1	546 0103
	74/ 80-90.....	2	991 402
3.292-6	ATTACHING PARTS, Lens To Housing, Parking And Directional Signal Lamp		
	SCREW, Machine..... 74/ 16-17-20-40.....	17.604	2 G153432
	SCREW, Tapping..... 74/ 14-15.....	17.660	6 G449605
	SCREW, Tapping..... 74/ 80.....	17.	6 G154959
3.292-7	BULB, Parking And Front Directional Signal Lamp		
	74/ (GE 1157)(Clear) 16-17-20-40	3.215	2 938 247
	74/ (GE 1157NA)(Amber) 14-15-80	3.292	2 G9428904
3.292-8	GASKET, Lamp Mounting Directional And Parking		
	74/ 80-90.....	2	991 400
3.292-9	RING, Lens Retaining, Front Park And Directional		
	74 80.....	3.317	2 931 595
3.292-10	BEZEL, Front Park And Directional		
	74/ 80-90.....	2	979 726
3.292-11	WIRE, Parking And Directional Signal Lamp Wire		
	74 80.....	2	991 299
3.300-1	LAMP ASSEMBLY, Tail, Stop And Rear Directional		
	LEFT		
	74/ 14-15.....	1	535 0459
	74/ 16-17.....	1	545 1037
	74 20-40 (Thriftside)	1	545 0306
	75/ 20-40 (Thriftside)	1	545 6696
	74/ 20-40 (Townside)	1	987 831
	74 80.....	1	545 0304
	75 80.....	1	535 3755
	76 80-90.....	1	545 7197

3.300

ELECTRICAL - INSTRUMENTS

RIGHT

74/	14-15.....	1	535 0460
74/	16-17.....	1	545 1037
74	20-40 (Thriftside).....	1	545 0306
75/	20-40 (Thriftside).....	1	545 6696
74/	20-40 (Townside).....	1	987 832
74	80.....	1	545 0305
75	80.....	1	535 3756
76	80-90.....	1	545 7198

3.300-2 BRACKET, Tail-Stop-Directional And Backup Lamp

74/	(Left) 20-40 (Thriftside).....	31.006	1	978 889
74/	(Right) 20-40 (Thriftside).....	31.006	1	978 990

3.300-3 BRACKET, Tail-Stop And Directional Lamp

74/75	80... (Less License Bracket).....	1	669 879
74/75	80... (Incl. License Bracket).....	1	991 416
76	80-90... (Incl. License Bracket).....	1	535 3758

3.300-4 ATTACHING PARTS, Tail Lamp To Bracket

SPACER.....	74/75 80.....	2	991 418
NUT, Hexagon.....	74/75 80.....	17.412	4 G271172
NUT, Hexagon.....	74/ 20-40 (Thriftside).....	17.412	4 G271172

3.300-5 ATTACHING PARTS, Tail Lamp To Body

SCREW, Tapping.....	74/ 20-40 (Townside).....	17.598	4 G191985
SCREW, Tapping.....	76 80... (Less Washer).....	2	400 4632
SCREW, Tapping.....	76 80... (Incl. Washer).....	4	400 0318
SCREW, Tapping.....	76 90... (Incl. Washer).....	6	400 0318
WASHER, Plain.....	74/ 14-15.....	17.814	4 G9417373
NUT, Hexagon.....	74/ 14-15.....	17.412	8 G271166
NUT, Hexagon.....	74/ 16-17.....	17.412	8 G271172

3.300-6 ATTACHING PARTS, Bracket To Body

SCREW, Machine.....	74 20-40 (Thriftside).....	17.626	2 G455305
NUT, Hexagon.....	74 20-40 (Thriftside).....	17.406	2 G120368

3.300-7 ATTACHING PARTS, Tail Lamp And Backup Bracket To Post

SCREW.....	74/ 20-40 (Thriftside).....	31.006	4 961 089
------------	-----------------------------	--------	-----------

3.300-8 SPACER, Tail Lamp ("U" Shape)

74/	10.....	2	970 487
-----	---------	---	---------

3.300-9 ATTACHING PARTS, Spacer To Body

SCREW, Tapping.....	74/ 10.....	17.660	2 G163210
WASHER, Plain.....	74/ 10.....	17.814	2 G9417373

3.303-1 HOUSING ASSEMBLY, Tail And Stop Lamp (Incl. Wire And Socket)

LEFT

74/	14-15..... (Use 994 025)	1	940 651
74/	16-17.....	1	812 4340
74/	20-40 (Thriftside).....	1	812 2733
74	80..... (Ord. 545 0304)	1	998 470

RIGHT

74/	14-15.....	1	940 652
74/	16-17.....	1	812 4340
74/	20-40 (Thriftside).....	1	812 2733
74	80..... (Ord. 545 0305)	1	998 473

3.305-1 GASKET, Tail And Stop Lamp To Body

74/	16-17.....	2	812 4343
74/	(Left) 14-15.....	1	931 641
74/	(Right) 14-15.....	1	932 158
74/	20-40 (Townside).....	2	545 0274
74/	20-40 (Thriftside).....	2	912 237
74/75	80.....	2	912 237

3.305-2	GASKET, Tail And Stop Lamp Lens				
	74/ (Left) 14-15.....	1		932 159	
	74/ (Right) 14-15.....	1		931 642	
	74/ 16-17.....	2		812 4342	
	74/ 20-40 (Townside).....	2		812 2676	
	74/ 20-40 (Thriftside).....	2		998 472	
	74/75 80..... (Use 998 472)	2		991 442	
3.305-5	WELT, Tail And Stop Lamp To Panel				
	74/ 14-15.....	2		985 048	
3.306-1	LENS, Tail And Stop Lamp				
	74/ (Left-Outer) 14-15.....	1		998 199	
	74/ (Left) 20-40 (Townside).....	1		812 2679	
	74/ (Right-Outer) 14-15.....	1		998 198	
	74/ (Right) 20-40 (Townside).....	1		812 2678	
	74/ (Inner) 14-15.....	2		812 3148	
	74/ 16-17.....	2		812 4341	
	74/ 20-40 (Thriftside).....	2		812 2928	
	74/75 80.....	2		812 2928	
	76 80-90.....	2		545 7724	
3.306-2	ATTACHING PARTS, Tail Lamps Lens To Housing				
	SCREW, Tapping..... 74/ 14-15...(10-24 x 5/8").....	17.660	AR	G167098	
	SCREW, Tapping..... 74/ 14-15...(8-32 x 7/8").....	17.680	AR	G165360	
	SCREW, Tapping..... 74/ 16-17..... (Use 979 936)	17.660	4	G9416074	
	SCREW, Tapping..... 74/ 20-40 (Townside).....	17.660	8	G9425250	
	SCREW, Tapping..... 74/ 20-40 (Thriftside).....	17.616	6	G155023	
	SCREW, Tapping..... 74/75 80.....	17.616	6	G155023	
	SCREW, Tapping..... 76 80-90.....		8	812 3288	
3.306-3	BAFFLE, Stop And Backup Light				
	76 80-90.....	2		545 7725	
3.312-1	BULB, Tail, Stop And Directional				
	74/ (GE 1034).....	3.215	2	G454645	
	74/ (GE 1157).....	3.215	2	938 247	
3.315-1	LAMP ASSEMBLY, Backup				
	74/ (Left) 14-15.....	1		988 325	
	74/ (Right) 14-15.....	1		988 326	
	74/ 20-40 (Thriftside).....	2		535 0180	
	74 80.....	2		535 0180	
	76 80.....	2		535 3759	
3.315-2	GASKET, Backup Lamp To Panel				
	74/ 20-40 (Thriftside).....	3.316	2	981 355	
	74/75 80.....	3.316	2	981 355	
3.315-3	ATTACHING PARTS, Backup Lamp To Panel				
	WASHER, Plain..... 74/ 14-15.....	17.814	4	G120385	
	NUT, Stamped..... 74/ 14-15.....	17.428	4	G9420289	
	NUT, Hexagon..... 74/ 20-40 (Thriftside).....	17.412	4	G271169	
	NUT, Hexagon..... 74/75 80...(10-32).....	17.412	4	G271169	
	NUT, Hexagon..... 74/75 80...(10-24).....	17.412	4	G271166	
3.316-1	HOUSING, Backup Lamp				
	74/ (Left) 14-15.....	1		979 861	
	74/ (Right) 14-15.....	1		979 862	
	74/ 20-40 (Thriftside).....	2		535 0181	
	74/75 80.....	2		535 0181	

3.317

ELECTRICAL - INSTRUMENTS

3.317-1	LENS, Backup Lamp				
	74	(Left) 14-15	1	979 869	
	75	(Left) 14-15	1	535 0439	
	76	(Right) 14-15	1	979 870	
	77	(Right) 14-15	1	535 0440	
	74	20-40 (Thrifside)	2	931 594	
	74-75	80	2	931 594	
3.317-1a	LENS KIT, Backup Lamp				
	74	(Left) 14-15 208	1	812 2369	
	74	(Right) 14-15 (Ord. 535 0440)	1	812 2368	
3.317-2	ATTACHING PARTS, Lens To Housing				
	SCREW, Machine	74/ 15-16	4	979 936	
	RING, Retainer	74/ 20-40 (Thrifside)	2	931 595	
	RING, Retainer	74-75 80	2	931 595	
3.317-3	GASKET, Backup Lamp Lens				
	74/	20-40 (Thrifside)	2	931 593	
	74-75	80	2	931 593	
	74/	14-15	2	979 937	
3.317-4	BULB, Backup Lamp				
	74/	(GE 1156) (Use 320 9543)	3.318	2	942 498
3.318-1	WIRE, Backup Lamp And Transmission Controlled Spark				
	74	10-20-40 (WMT)	1	535 0252	
	74	80 (WMT)	3.165	1	535 0097
	75	80 (WTCS)	1	545 6526	
	75	80 (WTCS)	1	545 6006	
	76	80-90 (WMT-LTCS)	1	545 6526	
	76	80-90 (WMT-WTCS)	1	545 9448	
3.318-1a	JUMPER, Backup Light Switch				
	74	10-20-40 (WMT)	1	545 0049	
3.318-2	ATTACHING PARTS, Backup Wire Harness To Shift Tower				
	CLIP	74/ (Rubber Cover) 80	3.165	1	998 699
3.318-5	WIRE, Backup Lamp Extension				
	74	20-40	1	535 0203	
	75	20-40	1	545 0045	
3.319-2	SWITCH, Backup Lamp (On Transmission Shift Rail)				
	74	W4ST	1	535 0061	
3.319-4	ADAPTER, Backup Lamp Switch				
	74	W4ST	1	998 091	
3.319-5	PLUNGER, Backup Lamp Switch				
	74/	W4ST	1	998 088	
3.319-6	SPRING, Backup Lamp Switch				
	74/	W4ST	1	998 089	
3.319-7	RETAINER, Backup Lamp Switch				
	74	W4ST	1	998 090	
3.321-1	SWITCH, Directional Signal				
	74	10-20-40 (LHD)	1	812 1438	
	74	10-20-40 (RHD)	1	948 847	
	74	80	1	535 0011	
	75	80	1	545 4971	
	76	80-90	1	812 1438	

ELECTRICAL - INSTRUMENTS

3.325

3.321-2	ATTACHING PARTS, Switch To Housing				
	SCREW, Tapping..... 74/	10-20-40 (LHD-WHT-WAW).....	3	448 8301	
	SCREW, Tapping..... 74/	10-20-40 (LHD-LAW).....	3	448 7763	
	SCREW, Tapping..... 74	10-20-40 (RHD).....	17.660	2	G166994
	SCREW, Tapping..... 76	80-90.....		3	448 7763
3.321-2a	ATTACHING PARTS, Hazard Warning Switch To Housing				
	SCREW, Tapping..... 74	10-20-40 (RHD).....	17.660	2	G166994
3.321-3	HOUSING, Turn Signal Switch (Less Switch)				
	74	10-20-40 (RHD).....	7.020	1	943 248
3.321-4	BRACKET, Directional Signal Switch Mounting				
	74/75	80.....		1	916 772
3.321-4a	ATTACHING PARTS, Directional Signal Switch To Steering Column				
	SCREW, Cap..... 74/75	80.....	17.634	1	G216277
3.321-5	CLAMP, Harness To Directional Switch				
	74/75	80.....		1	909 296
3.321-6	RING, Canceling Directional Signal				
	74	10-20-40 (RHD).....		1	930 886
3.321-7	ATTACHING PARTS, Directional Signal Housing To Jacket				
	BOLT, Hexagon..... 74	10-20-40 (RHD).....		2	933 850
	SCREW, Tapping..... 74	10-20-40 (RHD).....	17.634	2	G9405942
	NUT, Hexagon..... 74	10-20-40 (RHD).....		2	933 851
3.321-8	ATTACHING PARTS, Directional Signal Switch Harness To Steering Column				
	CLAMP, Spring..... 74/75	80.....		AR	909 301
3.321-14	CAM, Directional Signal Cancelling				
	74/	10-20-40 (LHD-WHT-WAW).....		1	448 7816
	74/	10-20-40 (LHD-LAW).....		1	448 7711
	76	80-90.....		1	448 7711
3.321-15	SPRING, Directional Signal Cancelling Cam				
	74	10-20-40 (LHD-WHT-WAW).....		1	812 2485
3.321-16	PROTECTOR, Directional Signal Switch Wire Harness				
	74/	10-20-40 (LHD-LAW).....		1	448 7741
	74/	10-20-40 (LHD-WHT-WAW).....		1	812 2486
	76	90 (WHT).....		1	448 7741
3.322-1	TURN SIGNAL REPAIR KIT				
	74/75	80.....		1	812 4944
3.324-2	LEVER, Directional Signal (Incl. Knob)				
	74	10-20-40 (LHD).....		1	321 6458
	74	10-20-40 (RHD).....		1	999 972
	75/	10-20-40 (LAW).....		1	321 6458
	75/	10-20-40 (WASC).....		1	322 6524
	76	80-90.....		1	321 6458
3.324-3	KNOB, Directional Signal Lever				
	74	10-20-40 (RHD).....		1	999 970
3.324-4	ATTACHING PARTS, Directional Signal Lever				
	SCREW, Machine..... 74/	10-20-40 (LHD).....	17.660	1	448 8318
	SCREW, Machine..... 76	80-90.....		1	448 8318
3.325-1	INSULATOR, Directional Signal				
	74	(1 Wire Receptacle) 10-20-40 (RHD).....	3.165	2	932 370
	74	(6 Terminal) 10-20-40 (RHD).....	3.165	1	932 365

3.330

ELECTRICAL - INSTRUMENTS

3.330-1	FLASHER, Directional Signal						
	74/ (Used Less Trailer Towing Package)	1	321	2068			
	74/ 10 (Used With Light Duty Trailer Towing Package)	3.690	1	318	6895		
3.330-2	BRACKET, Directional Signal Flasher Holder						
	74 10 (RHD)	1	932	133			
	74 80	1	932	133			
3.330-3	ATTACHING PARTS, Directional Signal Flasher Clip						
	SCREW, Machine	74 80	17.598	1	G159582		
	SCREW, Machine	74 10 (RHD)	17.598	1	G159582		
	NUT, Spring	74 10 (RHD)	17.421	1	G445164		
	NUT, Hexagon	74 10	17.412	1	G271163		
3.333-1	SWITCH, Stop Lamp						
	74/ RHD	1	931	216			
	74/75 80 (LHD)	1	321	5939			
	74/75 10-20-40 (LHD)	1	535	2620			
	76	1	535	2620			
3.333-2	RETAINER, Stop Light Switch						
	74/75 10-20-40	1	535	2622			
	76	1	535	2622			
3.335-1	LAMP ASSEMBLY, License						
	74/ 10	1	367	0544			
	74/ 20-40	1	930	887			
	74/75 80	1	545	4882			
3.335-2	ATTACHING PARTS, License Lamp To Tailgate Or Frame						
	SCREW, Tapping	74/ 10-20	17.671	2	G187303		
	SCREW, Machine	74/ 20-40	17.626	2	G455305		
	SCREW, Machine	74 80	17.596	4	G453019		
	SCREW, Machine	75 80	17.598	4	G454542		
	NUT, Hexagon	74/ 20-40	17.406	2	G120368		
3.335-3	ATTACHING PARTS, License Lamp To Housing						
	SCREW, Tapping	74/ 10	17.660	2	G161798		
	NUT, Spring	74 10	17.426	2	G445466		
3.335-4	HOUSING, License Plate Lamp						
	74/ 14-15	1	545	1033			
	74/ 16-17	1	545	1469			
3.335-5	ATTACHING PARTS, License Lamp Housing To Tailgate						
	NUT, Hexagon	74/ 10	17.412	4	G271166		
3.335-6	ATTACHING PARTS, License Plate To Tailgate						
	SCREW, Tapping	74/ 10	14.108	2	400 0272		
	BUMPER (Rubber)	74/ 10	25.054	1	400 3508		
	NUT, Push In (Plastic)	74/ 10	14.108	2	400 0141		
3.336-1	BRACKET, License Lamp (Mounted On Tailgate)						
	74/75 (Left) 80	1	943	107			
	74/75 (Right) 80	1	943	106			
3.336-2	ATTACHING PARTS, License Bracket Retaining						
	STUD, Ball	74/75 80	3.342	1	943 108		
	NUT, Hexagon	74/75 80	17.410	1	G124925		
3.336-3	BRACKET, License Plate Holder						
	74 (On Tail Lamp) 80	3.300	1	991	416		
	74 (On Back Panel) 80	1	986	274			
3.336-4	HOUSING, License Plate Lamp (With Solid Back Panel)						
	74 80	(Use 943 103)	1	943	101		

ELECTRICAL - INSTRUMENTS

3.346

3.339-1	LENS, License Plate Lamp				
	74 20-40.....	1	930 890	
	74 80 (Used With Solid Back Panel).....	1	545 5061	
3.339-2	ATTACHING PARTS, Lens To Housing				
	SCREW, Machine..... 74 10-20.....	17.666	2	G162877	
	SCREW, Machine..... 74 80.....	17.660	2	G167048	
3.339-3	GASKET, License Plate Lamp Lens				
	74 10-20.....	1	930 889	
3.341-1	HARNESS, License Lamp				
	74 10 (LHD-LER).....	1	545 1970	
	75/ 10 (LER).....	1	545 4958	
	74 (Lamp Mounted On Tailgate) 80.....	1	535 0194	
	75 80 (LHD).....	1	535 3760	
3.341-1a	PLUG KIT, License Plate Lamp				
	74/ 10.....	3.335	1	812 5407	
3.341-2	ATTACHING PARTS, License Lamp Harness To Ground				
	SCREW, Machine..... 74/ 10 (LHD).....	17.598	1	G454783	
	SCREW, Machine..... 74/ 80-90.....	17.598	1	G159920	
	WASHER, Lock..... 74/ 10 (LHD).....	17.826	1	G178378	
	WASHER, Lock..... 74/ 80-90.....	17.826	1	G178378	
	NUT, Hexagon..... 74/ 10 (LHD).....	17.412	1	G120361	
	NUT, Hexagon..... 74/ 80-90.....	17.412	1	G271166	
3.341-3	ATTACHING PARTS, License Lamp Harness To Tailgate				
	SCREW, Machine..... 74/ 80-90.....	17.598	1	G159920	
	CLIP, Closed..... 74/ 80-90.....	17.134	1	G120524	
	NUT, Hexagon..... 74/ 80-90.....	17.412	1	G271166	
3.341-4	HARNESS, License Lamp Adapter				
	74 14-15 (RHD).....	1	545 5118	
3.341-6	HARNESS, License Plate Lamp To Cross Harness				
	74 14-15 (RHD).....	1	932 908	
3.341-7	ATTACHING PARTS, Harness To Tailgate Hinge Screw				
	CLIP, Closed..... 74 10.....	3.165	1	A 5450	
	NUT, Spring..... 74 10.....	17.422	1	G187510	
3.341-10	GROMMET, License Plate Lamp Wire				
	74 (3/16").....	1	933 348	
	75 20-40.....	17.322	1	G120408	
3.341-13	BULB, License Plate Lamp				
	74 (4 C. P.) 20-40-80.....	3.215	1	938 900	
3.346-1	BASE, Domelamp				
	74/ 10-20-40.....	1	959 999	
3.346-2	ATTACHING PARTS, Domelamp To Rear Header				
	SCREW, Tapping..... 74/ 10-20-40.....	17.660	2	G161812	
	"U" NUT..... 74/ 10-20-40.....	2	961 832	
3.346-3	LENS, Domelamp				
	74/ 10-20-40.....	1	959 978	
3.346-5	WIRE, Front Door To Rear Door Switches				
	74 10 (LHD).....	1	545 0121	
	74 10 (RHD).....	1	999 170	

3.346

ELECTRICAL - INSTRUMENTS

3.346-6	WIRE, Domelamp Switch To Harness				
	74 10 (RHD).....	1	535	0085
3.346-7	HARNESS, Domelamp (Front)				
	74 10 (* 3-5).....	1	545	0119
	74/75 10 (* 3-6).....	3.670	1	545	1485
	76 10.....	1	545	9417
	74 14-15-20-40 (RHD).....	1	932	713
	74/75 20-40 (LHD-* 3-1).....	1	545	0119
	74 20-40 (* 3-2).....	3.671	1	545	1490
	76 20-40.....	1	545	9416
3.346-8	INSULATOR, Domelamp Harness In Door Pillar				
	75 10-20-40.....	3.165	1	535	0255
3.346-9	ATTACHING PARTS, Domelamp Harness To Body				
	CLIP..... 75 10-20-40.....	3.165	AR	927	663
3.346-10	BULB, Domelamp				
	74/ 10-20-40.....	1	960	531
3.346-14	GROMMET, Domelamp Harness (In Cowl Panel)				
	74/ 10-20-40.....	3.166	2	933	955
3.346-16	WIRE ASSEMBLY, Jumper Door Light Switch				
	74 10 (RHD).....	1	912	663
3.349-3	LAMP, Courtesy				
	74/75 10-20-40.....	1	545	0122
	76	1	545	0122
3.349-4	ATTACHING PARTS, Lamp To Panel				
	SCREW, Tapping..... 74/75 10-20-40.....	17.654	2	G445563	
	SCREW, Tapping..... 76	17.654	2	G445563	
3.349-4a	LENS, Courtesy Lamp				
	74/75 10-20-40.....	2	545	0116
	76	2	545	0116
3.349-5	BULB, Courtesy Lamp				
	74/75 10-20-40.....	3.215	2	G142452	
	76	3.215	2	G142452	
3.349-6	SWITCH, Courtesy Lamp (In Door)				
	74 10.....	AR	936	225
	75/ 10-20-40.....	3.319	AR	545	6019
3.349-7	HARNESS, Courtesy Lamp (Lamp To Door Switch)				
	74/ 10-20-40 (LHD).....	1	545	0120
3.349-8	WIRE, Courtesy Lamp To Domelamp Harness Jumper				
	75/ 14-15.....	1	545	6014
	74 16-17.....	1	545	0118
	75/ 16-17-20-40.....	1	545	6013
3.352-2	LIGHTER ASSEMBLY, Cigar (Switch Base)				
	74/75 ... (Incl. Element And Knob).....	1	989	664
	76	1	545	9220
3.352-3	KNOB, Cigar Lighter				
	74/75	1	989	424
	76	1	545	7866
3.352-4	HOUSING, Cigar Lighter				
	74/75	1	945	220
	76	1	357	6049

ELECTRICAL - INSTRUMENTS

3.400

3.352-5	WIRE, Cigar Lighter				
	74/75 10-20-40	1		932 324	
	74/ 80-90	1		535 0360	
3.352-6	ELEMENT, Cigar Lighter				
	74/	1		989 665	
3.352-7	BRACKET, Cigar Lighter				
	76 80-90	1		545 9213	
3.352-8	ATTACHING PARTS, Cigar Lighter Bracket				
	SCREW, Tapping..... 76 80-90	12.061	2	400 4426	
3.360-1	CLOCK				
	74/75 10-20-40	1		987 938	
	76 10-20-40	1		545 7707	
	76 80-90 (LHD)	1		545 9087	
3.360-2	KNOB, Clock Reset				
	76 80-90 (LHD)	1		812 6879	
3.361-2	BEZEL, Clock				
	74/ 10-20-40	1		989 277 NC	
3.369-1	BULB, Clock				
	74/ 10-20-40	3.215	1	G454626	
	76 80-90		1	448 7366	
3.369-2	LENS, Clock				
	74/ 10-20-40		1	988 116	
3.369-3	HARNESS, Clock				
	74/ 10-20-40		1	535 0277	
	76 80-90		1	545 7158	
3.378-2	LAMP, Glove Box (Incl. Switch)				
	74/ 10-20-40		1	535 0276	
3.378-3	BULB, Glove Box Lamp				
	74/ (GE 1891) 10-20-40	3.215	1	934 687	
	76 (GE 1893) 10-20-40	3.215	1	345 1933	
3.400-1	BUTTON, Center Horn				
	74 10-20-40 (RHD)		1	999 881	
	74/ (Buff) 10-20-40 (LHD)		1	535 4411	
	74/ (Green) 10-20-40 (LHD)		1	535 4412	
	74/ (Blue) 10-20-40 (LHD)		1	535 4413	
	74/ (Black) 10-20-40 (LHD)		1	535 4414	
	74/75 80		1	990 413	
	76 80-90 (Used Less Sport Wheel)		1	535 5368	
	76 80-90 (Used With Sport Wheel)		1	535 4414	
3.400-1a	DISC, Horn Button				
	74/75 80		1	930 673	
3.400-1b	SEAL, Horn Button To Wheel				
	76 80-90		1	535 4518	
3.400-2	RETAINER, Center Horn Button				
	74/ 10-20-40 (LHD)		1	318 7257	
	74 10-20-40 (RHD)		1	930 371	
	74/75 80		1	927 414	
	76 80-90		1	318 7257	
3.400-3	FLANGE, Horn Button Contact				
	74 10-20-40 (RHD)		1	947 973	
3.400-4	SWITCH, Horn				
	74 10-20-40 (RHD)		1	930 322	

3.400

ELECTRICAL - INSTRUMENTS

3.400-5	ATTACHING PARTS, Horn Switch To Steering Wheel SCREW, Machine..... 74 10-20-40 (RHD)	17.628	3	G420454
3.400-6	ATTACHING PARTS, Horn Flange And Spacer To Switch WASHER, Plain..... 74 10-20-40 (RHD)	17.814	3	G131014
3.400-7	SPACER, Horn Switch To Flange 74 10-20-40 (RHD)		3	934 068
3.400-8	BRUSH, Horn Contact (Incl. Wire) 74 80..... 74 10-20-40 (RHD)		1	535 0056
			1	943 231
3.400-9	ATTACHING PARTS, Horn Contact To Steering Column SCREW, Tapping..... 74/75 80.....	17.660	1	G167065
3.400-10	TERMINAL, Wire Assembly 74 10-20-40 (RHD)		1	930 373
3.400-11	WIRE, Horn 74 75 80.....		1	990 395
3.400-12	CUP, Contact, Horn Button 74/75 80.....		1	927 413
3.400-13	PIN, Horn Blowing Contact 74 10-20-40..... 76 80-90.....		1	318 7249
			1	318 7249
3.400-14	SPRING, Center Horn Button Receiver 74 10-20-40..... 76 80-90.....		1	318 6965
			1	318 6965
3.400-14a	RING, Center Horn Button Contact (On Steering Shaft) 74/75 80.....		1	990 193
3.400-15	RECEIVER, Center Horn Button 74/ 10-20-40..... 76 80-90.....		1	318 6967
			1	318 6967
3.400-16	ATTACHING PARTS, Receiver To Wheel SCREW, Tapping..... 74/ 10-20-40.....		3	400 4167
3.400-17	INSULATOR, Center Horn Button Receiver 74 10-20-40.....		1	321 3915
3.401-2	BEZEL, Horn Blowing 74/ 10-20-40 (LHD).....	10.290	1	321 7793
3.401-3	ATTACHING PARTS, Cover To Horn Blowing Bezel SCREW, Tapping..... 74/ 10-20-40 (LHD).....	10.290	4	400 4643
3.401-4	SPRING, Horn Blowing Cover 74 10-20-40 (LHD).....		4	319 6916
3.401-5	BUSHING, Steering Wheel To Cover 74/ 10-20-40 (Spoke Wheel)	10.280	4	322 1284
	74/ 10-20-40 (Sports Wheel)	3.400	1	318 6964
	76 80-90.....		1	318 6964
3.401-4a	WASHER, Horn Blowing Cover Insulating 74/ 10-20-40.....		4	400 5025
3.401-6	INSERT, Horn Blowing Cover 74/ 10-20-40 (LHD)....(Incl. Wire).....	10.280	1	321 9721

ELECTRICAL - INSTRUMENTS

3.515

3.401-7	SPRING, Horn Blowing Contact				
	74 10-20-40 (Spoke Wheel)	3.400	1	318	7255
	75 10-20-40 (Spoke Wheel)	3.400	3	318	7255
	76 80-90		1	318	7255
3.500-1	CLUSTER ASSEMBLY, Instruments (Miles)				
	74 80		1	988	572
	75 80 (* 3-7)		1	545	5854
	75 80 (* 3-8)		1	545	6784
	76 80-90 (* 3-7)		1	545	7206
	76 80-90 (* 3-8)		1	545	7207
3.500-2	CLUSTER ASSEMBLY, Instruments (Kilos)				
	74 80		1	988	573
	75 80 (* 3-7)		1	545	5855
	75 80 (* 3-8)		1	545	6785
	76 80-90 (* 3-7)		1	545	7883
	76 80-90 (* 3-8)		1	545	7884
3.500-3	ATTACHING PARTS, Cluster To Panel				
	NUT, Hexagon 74/ 80	17.412	4	G271166	
3.505-1	CASE, Instrument Cluster				
	74/75 10-20-40		1	812	2476
	76 10-20-40		1	812	6932
3.505-1a	ATTACHING PARTS, Case To Bezel				
	SCREW, Tapping 74/ 10-20-40		6	448	7972
	SCREW, Tapping 74/ 10-20-40	22.100	6	400	2657
3.505-2	HOUSING, Warning Lamp				
	74/ 10-20-40		3	448	7986
3.506-1	PLATE, Instrument Cluster Gauge				
	74/ 10-20-40	3.500	1	812	2478
3.510-1	BEZEL, Instrument Cluster				
	74/75 10-20-40		1	545	2014
	76 10-20-40		1	545	7853
	74 80		1	812	3058
3.510-1a	ATTACHING PARTS, Bezel To Instrument Panel				
	SCREW, Trim 74/ 10-20-40	22.100	6	400	2657
	NUT, Speed 74/ 10-20-40	3.550	6	545	0153
3.510-2	OVERLAY, Instrument Cluster Bezel				
	74 (Woodruff) 10-20-40 (* 3-9)		1	988	115
	74 (Woodruff) 10-20-40 (* 3-10)		1	545	4643
	75 (Woodruff) 10-20-40		1	545	4643
	74 (Engine Turn) 10-20-40		1	545	3792
	76 80-90	22.100	1	545	7117
3.515-2	LENS, Instrument Cluster				
	74/75 (Emergency Lockout) 10-20-40		1	812	4790
	76 (Emergency Lockout) 10-20-40		1	812	6931
	74/75 (Brake) 10-20-40	3.510	1	812	2482
	76 (Brake And Belts) 10-20-40		1	812	6936
	74 80...(Incl. Gasket)		1	913	387
3.515-3	RETAINER, Instrument Cluster Lens				
	74 80...(Incl. Gasket)		1	913	388
3.515-4	MASK, Instrument Cluster				
	74/75 (Oil And Amp.) 10-20-40		1	812	2479
	76 (Oil And Amp.) 10-20-40		1	812	6934
	74/75 (Fuel And Temp.) 10-20-40	35.157	1	812	2480
	76 (Fuel And Temp.) 10-20-40		1	812	6933

3.515

ELECTRICAL - INSTRUMENTS

3.515-4a	ATTACHING PARTS, Mask To Plate				
	SCREW, Tapping..... 74/	10-20-40.....	4	320 6024
3.520-1	CONDUCTOR, Instrument Cluster (Printed Circuit Board)				
	74/75	10-20-40.....	1	812 2477
	76	10-20-40.....	1	812 6935
3.521-1	ATTACHING PARTS, Instrument Cluster Ground Wire To Panel				
	SCREW, Machine..... 74/	10-20-40.....	17.598	1	G456334
	NUT, Hexagon..... 74/	10-20-40.....	17.412	1	G271166
3.525-1	SOCKET, Instrument Cluster Illumination				
	74/	(Black) 10-20-40.....	3.635	7	448 7985
	74/	(Gray) 10-20-40.....	3.635	2	812 2474
	74/	(Noninsulated) 80.....	3.635	3	800 926
	74/	(Insulated) 80.....	3.635	2	911 688
3.525-2	DIFFUSER, Instrument Cluster Lamp				
	74/75	10-20-40.....	3.635	4	320 8231
	76	10-20-40.....	1	812 6930
3.525-3	INSULATOR, Instrument Cluster Socket				
	74/	80.....	3.635	AR	637 749
3.525-4	SPRING, Instrument Cluster Socket				
	74/	80.....	3.635	5	636 729
3.531-4	BULB, Instrument Cluster Illumination				
	74/	(GE53).....	3.215	AR	G131282
	74/	(GE158).....	3.635	AR	936 653
	74/	(GE1816).....	3.215	AR	G454626
3.550-1	SPEEDOMETER (Miles)				
	74/75	10-20-40.....	1	812 2483
	76	10-20-40.....	1	812 6925
	74	80.....	1	999 747
	75	80 (* 3-7).....	1	812 5434
	75	80 (* 3-8).....	1	812 5922
	76	80-90 (* 3-7).....	1	812 6921
	76	80-90 (* 3-8).....	1	812 6922
3.550-2	SPEEDOMETER (Kilos)				
	74/75	10-20-40.....	1	812 2469
	76	10-20-40.....	1	812 6937
	74	80.....	1	535 0079
	75	80 (* 3-7).....	1	812 5435
	75	80 (* 3-8).....	1	812 5921
	76	80-90 (* 3-7).....	1	812 6923
	76	80-90 (* 3-8).....	1	812 6924
3.550-3	ATTACHING PARTS, Speedometer To Housing				
	SCREW, Tapping..... 74/	10-20-40.....	2	320 8222
	SCREW, Tapping..... 74/	80-90.....	2	803 366
	BUSHING..... 74/	10-20-40.....	2	320 8223
	GASKET..... 74/	10-20-40.....	1	320 8225
	GROMMET..... 74/	10-20-40.....	2	320 8224
3.570-1	CABLE, Speedometer (Incl. Core) (Refer To Chart On Special Information Page Gr 3 - 1)				
	74	10-20-40 (LHD-W3ST)... (64-1/2" Lona).....	1	535 1775
	75	10-20-40 (W3ST)... (64-1/2" Lona).....	1	535 1775
	74	10 (V8-W4ST-LHD)... (69" Lona).....	1	535 1777
	75/	10-20-40 (W4ST)... (69" Lona).....	1	535 1777
	74	10-20-40 (360-WHT-WDT-Calif.)... (80" Lona).....	1	535 1776
	74	10-20-40 (360-WHT-W4B-Calif.)... (90" Lona).....	1	535 3092
	74	10-20-40 (401-WHT-W4B-Calif.)... (90" Lona).....	1	535 3092
	75/	10-20-40 (WHT-LASC)... (90" Lona).....	1	535 3092
	75/	10-20-40 (WHT-WASC-Speedometer To Regulator)... (26" Lona).....	1	545 6667

75	10-20-40 (WHT-LASC-Used With Reduction Unit-Lower) ... (33" Long)	1	545 9134
75	10-20-40 (WHT-LASC-Used With Reduction Unit-Upper) ... (57" Long)	1	545 9132
74	14-15-26 (RHD-Six)... (104" Long)	1	998 849
74	14-15 (Six-W4ST-LHD)... (80" Long)	1	535 1776
76	10-20-40 (258-W3ST)	1	535 1777
76	10-20-40 (360-W3ST)	1	535 1775
74	25-40 (Six-W4ST-LHD)... (69" Long)	1	535 1777
75	80 (V8-W3ST-Lower)... (15" Long)	1	545 9065
75	80 (V8-W3ST-Upper)... (45" Long)	1	545 9064
74/75	80 (W3ST)... (60" Long)	1	535 1778
74/75	80 (W4ST)... (64-1/2" Long)	1	535 1775
76	80-90 (W3ST)	1	535 1778
76	80-90 (W4ST)... (64-1/2" Long)	1	535 1775
76	80-90 (W4ST)... (69" Long)	1	535 1777
76	90 (WHT-Except Calif.)	1	535 1776
3.570-1a	CABLE, Speedometer (Transfer Case To Speedometer Switch)		
74	10-25-45 (Six-WHT)	1	535 1439
74	10-20 (V8-WHT)	1	535 2927
74	40 (V8-WHT)	1	535 1439
76	90 (WHT-Calif.)	1	545 9635
3.570-1b	CABLE, Speedometer (Speedometer Switch To Speedometer)		
74	10-25-40 (WHT)... (29" Long)	1	535 3091
76	90 (WHT-Calif.)	1	545 9636
3.570-2	CABLE, Automatic Speed Control Regulator To Transmission		
75/	10-20-40 (WASC)	1	545 4319
3.570-4	GROMMET, Speedometer Cable (Thru Dash Panel)		
74	10-20-40	1	545 0526
3.570-5	RETAINER, Speedometer Cable Grommet		
74	10-20-40	3.166	1 999 752
3.570-5a	ATTACHING PARTS, Retainer To Dash		
SCREW, Tapping	74 10-20-40	17.660	2 G162077
3.570-6	ATTACHING PARTS, Speedometer Cable To Dash		
SCREW, Machine	74 80	17.660	1 G162077
CLAMP	76 90 (WHT)		1 545 0374
CLIP	74/ 10-20-40	3.165	1 926 878
CLIP, Speed	74 80	17.134	1 G120521
3.570-7	ATTACHING PARTS, Speedometer Cable To Lower Cover Plate		
CLIP, Speed	74 80	17.134	1 G120521
WASHER, Plain	74 80	17.814	1 G120392
NUT, Hexagon	74 80	17.406	1 G120375
3.575	CORE, Speedometer Cable (Refer To Chart On Special Information Page Gr 3 - 1 For Respective Core)		
3.590-1	GEAR, Speedometer Driven		

TIRE SIZE	AXLE RATIO	TEETH	PART NO.
1974 - 10 (Six)			
F-78 x 15	3.07/1	13	535 2808
H-78 x 15	3.54/1	15	931 382
1974 - 10 (V8-LQT)			
F-78 x 15	3.07/1	13	535 2812
F-78 x 15	3.54/1	16	535 2811
H-78 x 15	3.07/1	14	535 2809
H-78 x 15	3.54/1	15	535 2810
1974 - 10 (V8-WQT)			
F-78 x 15	3.54/1	16	535 2815
H-78 x 15	3.07/1	13	535 2812
H-78 x 15	3.07/1	14	535 2813
H-78 x 15	3.54/1	15	535 2814

ELECTRICAL - INSTRUMENTS

TIRE SIZE	AXLE RATIO	TEETH	PART NO.
1974 - 25-45 (Six-LQT)			
7.00 x 15	4.09/1	17	931 384
F-78 x 15	4.09/1	18	931 385
H-78 x 15	4.09/1	18	931 385
1974 - 25-45 (V8-LQT)			
7.00 x 15	3.54/1	15	931 382
7.00 x 15	3.54/1	16	931 383
7.00 x 15	4.09/1	17	931 384
F-78 x 15	3.54/1	16	931 383
F-78 x 15	4.09/1	18	931 385
H-78 x 15	3.54/1	15	931 382
H-78 x 15	4.09/1	18	931 385
1974 - 25-45 (V8-WQT)			
7.00 x 15	3.54/1	15	535 1825
7.00 x 15	3.54/1	16	535 1826
7.00 x 15	4.09/1	17	535 1827
F-78 x 15	3.54/1	16	535 1826
F-78 x 15	4.09/1	18	535 1828
H-78 x 15	3.54/1	15	535 1825
H-78 x 15	4.09/1	18	535 1828
1974 - 26-46 (Six)			
7.50 x 16	4.88/1	20	910 088
8.00 x 16.5	4.88/1	22	910 089
8.75 x 16.5	4.88/1	22	910 089
9.50 x 16.5	4.88/1	20	910 088
1974 - 26-46 (V8-LQT-Except 4.88/1 Ratio)			
7.50 x 16	3.73/1	15	931 382
7.50 x 16	4.09/1	16	931 383
8.00 x 16.5	3.73/1	17	931 384
8.00 x 16.5	4.09/1	18	931 385
8.75 x 16.5	3.73/1	16	931 383
8.75 x 16.5	4.09/1	18	931 385
9.50 x 16.5	3.73/1	15	931 382
9.50 x 16.5	4.09/1	17	931 384
1974 - 26-46 (V8-WQT-Except 4.88/1 Ratio)			
7.50 x 16	3.73/1	15	535 1825
7.50 x 16	4.09/1	16	535 1826
8.00 x 16.5	3.73/1	17	535 1827
8.00 x 16.5	4.09/1	18	535 1828
8.75 x 16.5	3.73/1	16	535 1826
8.75 x 16.5	4.09/1	18	535 1828
9.50 x 16.5	3.73/1	15	535 1825
9.50 x 16	4.09/1	17	535 1827
1974 - 26-46 (V8 - 4.88/1 Ratio)			
7.50 x 16	4.88/1	20	910 088
8.00 x 16.5	4.88/1	22	910 089
8.75 x 16.5	4.88/1	22	910 089
9.50 x 16.5	4.88/1	20	910 088
1974 - 80 (Six)(304)			
6.00 x 16	3.73/1	16	931 383
6.00 x 16	4.27/1	18	910 087
7.00 x 15	3.73/1	15	535 1825
7.00 x 15	3.73/1	16	931 383
7.00 x 15	4.27/1	18	910 087
E-78 x 15	4.27/1	20	910 088
F-78 x 15	3.73/1	17	535 1827
H-78 x 15	3.73/1	16	535 1826
H-78 x 15	4.27/1	18	910 087
1975 - 10 (Six)			
F-78 x 15	3.54/1	16	535 1826
H-78 x 15	3.54/1	15	535 1825

ELECTRICAL - INSTRUMENTS

3.590

TIRE SIZE	AXLE RATIO	TEETH	PART NO.
HR-78 x 15	3.54/1	15	535 1825
H-78 x 15	4.09/1	18	535 1828
HR-78 x 15	4.09/1	18	535 1828
1975 - 10 (V8)			
F-78 x 15	3.07/1	14	535 2813
H-78 x 15	3.07/1	13	535 2812
HR-78 x 15	3.07/1	13	535 2812
F-78 x 15	3.54/1	16	535 2815
H-78 x 15	3.54/1	15	535 2814
HR-78 x 15	3.54/1	15	535 2814
1975 - 25-40 (Six)			
G-78 x 15	4.09/1	18	535 1828
H-78 x 15	4.09/1	18	535 1828
HR-78 x 15	4.09/1	18	535 1828
1975 - 26 (Six)			
7.50 x 16	4.88/1	20	535 4329
8.00 x 16.5	4.88/1	22	535 4330
8.75 x 16.5	4.88/1	22	535 4330
9.50 x 16.5	4.88/1	20	535 4329
1975 - 25-40 (V8)			
7.50 x 16	3.73/1	15	535 1825
7.50 x 16	4.09/1	16 (Stamped SW890207)	535 1826
7.50 x 16	4.09/1	16 (Stamped SW890240)	535 2815
8.00 x 16.5	3.73/1	17	535 1827
8.00 x 16.5	4.09/1	18	535 1828
8.75 x 16.5	3.73/1	15	535 1825
8.75 x 16.5	4.09/1	17	535 1827
9.50 x 16.5	3.73/1	15	535 1825
9.50 x 16.5	4.09/1	17	535 1827
G-78 x 14	3.54/1	15	535 1825
G-78 x 15	4.09/1	18	535 1828
H-78 x 14	3.54/1	15	535 1825
H-78 x 15	4.09/1	18	535 1828
HR-78 x 15	3.54/1	15	535 1825
HR-78 x 15	4.09/1	18	535 1828
1975 - 80			
6.00 x 16	3.73/1	16 (Stamped SW890207)	535 1826
6.00 x 16	3.73/1	16 (Stamped SW890240)	535 2815
6.00 x 16	4.27/1	18	535 4328
E-78 x 15	3.73/1	17	535 1827
E-78 x 15	4.27/1	20	535 4329
F-78 x 15	3.73/1	17	535 1827
F-78 x 15	4.27/1	20	535 4329
H-78 x 15	3.73/1	16	535 1826
H-78 x 15	4.27/1	18	535 4328
1976 - 10			
10 x 15	3.54/1	14 (Tracker A-T)	535 2813
H-78 x 15	3.07/1	14	535 2813
H-78 x 15	3.54/1	16	535 2815
HR-78 x 15	3.07/1	14	535 2813
HR-78 x 15	3.54/1	16	535 2815
1976 - 25-45			
10 x 15	3.54/1	14 (Tracker A-T)	535 2813
H-78 x 15	3.54/1	15	535 2814
H-78 x 15	4.09/1	18	535 1828
HR-78 x 15	3.54/1	16	535 2815
HR-78 x 15	4.09/1	18	535 1828
1976 - 26			
7.50 x 16	4.88/1	18	535 4330

ELECTRICAL - INSTRUMENTS

TIRE SIZE	AXLE RATIO	TEETH	PART NO.
1976 - 46			
7.50 x 16	3.73/1	14	535 2813
7.50 x 16	4.09/1	16	535 1826
7.50 x 16	4.88/1	18	535 4330
8.00 x 16.5	3.73/1	16	535 2815
8.00 x 16.5	4.09/1	17	535 1827
8.00 x 16.5	4.88/1	20	535 4329
9.50 x 16.5	3.73/1	15	535 2814
9.50 x 16.5	4.09/1	17	535 1827
9.50 x 16.5	4.88/1	20	535 4329

1976 - 80-90

6.00 x 16	3.54/1	15	535 1825
6.00 x 16	4.09/1	17	535 1827
E-78 x 14	4.09/1	18	535 1828
E-78 x 15	3.54/1	16	535 1826
F-78 x 14	4.09/1	18	535 1828
F-78 x 15	3.54/1	16	535 1826
H-78 x 14	4.09/1	18	535 1828
H-78 x 15	3.54/1	15	535 1825
HR-78 x 14	3.54/1	16	535 1826
HR-78 x 14	4.09/1	17	535 1827

3.590-2 SLEEVE, Speedometer Driven Gear

74 10-20-40 (LQT)	1	636 396
74 10-20-40 (WQT)	1	535 1829
76 10-20-40	1	535 1829
74 80	1	636 396
75/ WMT	1	535 1829

3.590-3 SEAL, Speedometer Driven Gear

74/ 80	1	643 679
--------------	---	---------

3.600-1 AMMETER

74/75 10-20-40	1	812 2470
76 10-20-40	1	812 6926
74 80	1	988 796

3.600-2 ATTACHING PARTS, Ammeter To Case

NUT, Stamped	74	10-20-40	3.610	2	320 8221
--------------------	----	----------------	-------	---	----------

3.600-3 ATTACHING PARTS, Ammeter To Bracket

NUT, Hexagon	74	80	17.412	2	G271169
--------------------	----	----------	--------	---	---------

3.600-4 BRACKET, Ammeter (Incl. Light Bracket)

74 80	1	933 159
-------------	---	---------

3.600-5 WIRE, Ammeter And Oil Pressure Gauge

74 80	1	535 0354
-------------	---	----------

3.600-6 BULB, Ammeter

74/ 80	3.215	2	G127934
--------------	-------	---	---------

3.600-7 VOLTMETER

75 80	1	535 3931
76 80-90 (* 3-17)	1	545 9848
76 80-90 (* 3-18)	1	546 0641

3.600-8 BRACKET, Voltmeter

75/ 80 (* 3-17)	1	535 3932
76 80-90 (* 3-18)	1	546 0642

3.600-9 ATTACHING PARTS, Voltmeter Terminals

NUT, Hexagon	75/	80 ... (8-32)	17.412	2	G120622
NUT, Hexagon	75/	80 ... (8-32) ... (Incl. Washer)	17.412	1	G271163
NUT, Hexagon	75/	80 ... (10-32)	17.412	1	G120614
NUT, Hexagon	75/	80 ... (10-32) ... (Incl. Washer)	17.412	2	G271169

3.600-10	CABLE, Voltmeter							
	75	80	1	535	3937	
3.605-1	GAUGE, Oil Pressure (In Instrument Cluster)							
	74/75	10-20-40	1	812	2473	
	76	10-20-40	1	812	6929	
	74	80	1	988	579	
	75	80	1	535	3934	
	76	80-90 (* 3-17)	1	545	9851	
	76	80-90 (* 3-18)	1	546	0640	
3.605-2	ATTACHING PARTS, Gauge To Case							
	NUT, Stamped	74	10-20-40	2	320	8221	
	NUT, Stamped	74	10-20-40	3.610	2	320	8221
3.605-2a	ATTACHING PARTS, Gauge To Bracket							
	NUT, Hexagon	74	80	17.412	2	G271169	
	NUT, Hexagon	75	80... (8-32) ... (Less Washer)	17.412	1	G120622	
	NUT, Hexagon	75	80... (8-32) ... (Incl. Washer)	17.412	1	G271163	
	NUT, Hexagon	75/	80-90... (10-32)	17.412	2	G120614	
3.605-2b	BRACKET, Oil Pressure Gauge (On Instrument Panel)							
	74	80	1	930	069	
	75/	80-90 (* 3-17)	3.610	1	535	3932
	76	80-90 (* 3-18)	1	546	0642	
3.605-3	SENDING UNIT, Oil Pressure							
	74/	10-20-40	1	321	2004	
	74	80 (Used Less Gauge)	1	314	2826	
	74	80 (Used With Gauge)	1	448	5864	
	75/	80-90 (* 3-17)	1	321	2004	
	76	80-90 (* 3-18)	1	546	0643	
3.605-6	FITTING, Elbow To Oil Pressure Sending Unit							
	74/	17.006	1	G443998	
3.605-7	ELBOW, Oil Pressure Gauge							
	74/	V8	1	321	2002	
	75	80	17.238	1	G9409927	
3.610-1	GAUGE, Water Temperature (In Instrument Cluster)							
	74/75	10-20-40	1	812	2472	
	76	10-20-40	1	812	6928	
	74/75	80	1	812	4670	
	76	80-90	1	812	6920	
3.610-2	ATTACHING PARTS, Gauge To Cluster							
	NUT, Stamped	74	10-20-40	2	320	8221	
	NUT, Stamped	74/	80	17.428	2	G144562	
3.610-3	SENDING UNIT, Water Temperature							
	74/	1	317	7594	
3.615-1	GAUGE, Gasoline (In Instrument Cluster)							
	74/75	10-20-40	1	812	2471	
	76	10-20-40	1	812	6927	
	74/75	80	1	999	748	
	76	80-90	1	812	6919	
3.615-2	ATTACHING PARTS, Gauge To Cluster							
	NUT, Stamped	74	10-20-40	2	320	8221	
3.615-3	GAUGE, Gasoline (Sending Unit In Gasoline Tank)							
	74/	10	1	992	922	
	74/75	20-40 ... (Incl. Outlet Tube)	1	998	076	(Ord. 812 0564)
	76	20-40	1	812	0564	
	74/	80-90	1	994	620	
3.615-4	LOCK, Gasoline Gauge To Gasoline Tank							
	74/	10	1	938	458	
	74/	80-90	1	929	669	

3.615

ELECTRICAL - INSTRUMENTS

3.615-5	GASKET, Gasoline Gauge To Gasoline Tank				
	74/ 10.....	1	938 457	
	74/ 80-90.....	4.160	1	941 521	
3.615-6	NUT, Gasoline Gauge Wire To Gauge				
	74/	17.412	1	G271169	
3.615-7	WIRE, Gasoline Gauge To Frame Harness				
	74 20-40 (RHD)	1	932 836	
	74/75 80.....	1	932 836	
	76	1	546 0014	
3.650-1	SWITCH, Parking Brake Warning Lamp				
	74/75 10-20-40 (Metal)	1	933 147	
	74/75 10-20-40 (Plastic)	1	545 6973	
	76 10-20-40.....	1	317 6985	
	76 80-90.....	1	546 0111	
3.650-2	ATTACHING PARTS, Switch To Bracket				
	SCREW, Tapping..... 74/ 10-20-40.....	17.660	1	G163210	
3.650-3	BRACKET, Parking Brake Warning Lamp Switch				
	74/ 10-20-40.....	1	933 148	
3.650-4	ATTACHING PARTS, Bracket To Parking Brake				
	SCREW, Machine..... 74/ 10-20-40.....	17.598	1	G192236	
	NUT, Stop	17.416	1	G454750	
3.650-5	WIRE, Parking Brake Switch Jumper				
	74/ 10-20-40.....	1	812 5996	
3.651-1	LAMP, Brake Pressure Warning				
	74	3.650	1	934 064	
	75 80.....	1	545 6563	
3.651-2	WIRE, Brake Pressure Warning Lamp Extension				
	74 10 (RHD)	3.650	1	936 210	
	74 80.....	3.650	1	545 2493	
	75/ 80.....	1	535 3555	
3.651-3	BULB, Brake Pressure Warning Lamp				
	74/	3.215	1	G127934	
3.670-1	BASE, Rear Cargo Lamp				
	74/ 10.....	3.346	1	959 999	
3.670-2	ATTACHING PARTS, Base To Roof Panel				
	SCREW, Tapping..... 74/ 10.....	17.660	2	G161812	
3.670-3	LENS, Rear Dome Lamp				
	74/ 10 (* 3-6)	3.346	1	959 978	
3.670-4	HARNESS, Rear Dome Lamp				
	74/ 10 (* 3-6)	3.346	1	545 1485	
3.670-5	BULB, Rear Dome Lamp				
	74/ 10 (* 3-6)	3.346	1	960 531	
3.671-1	BASE, Pick-Up Box Cargo Lamp				
	74/ 20-40.....	1	545 2057	
3.671-2	ATTACHING PARTS, Cargo Lamp Base To Rear Panel				
	SCREW, Tapping..... 74/ 20-40.....	17.648	4	G9414732	
	"J" NUT	4	400 1996	

ELECTRICAL - INSTRUMENTS

3.700

3.671-3	LENS, Pick-Up Box Cargo Lamp 74/ 20-40.....	1	545 2306
3.671-4	ATTACHING PARTS, Pick-Up Box Cargo Lamp Lens SCREW, Tapping..... 74/ 20-40.....	17.660	1	G164401
3.671-5	GASKET, Cargo Lamp Lens 74/ 20-40.....	1	545 2305
3.671-6	BEZEL, Pick-Up Box Cargo Lamp 74/ 20-40.....	1	545 1487
3.671-7	ATTACHING PARTS, Bezel To Back Panel SCREW, Tapping..... 74/ 20-40.....	17.660	2	G9414721
3.671-8	SEAL, Bezel To Back Panel 74/ 20-40.....	1	545 1488
3.671-9	HARNES, Pick-Up Box Cargo Lamp And Dome Lamp 74/ 20-40.....	3.670	1	545 1490
3.671-10	ATTACHING PARTS, Harness To Ground SCREW, Tapping..... 74/ 20-40.....	17.660	1	G9414721
3.671-11	GROMMET, Harness Thru Back Panel 74/ 20-40.....	3.341	1	933 348
3.671-12	SWITCH, Pick-Up Box Cargo Lamp 74/ 20-40.....	3.670	1	545 1489
3.671-13	ATTACHING PARTS, Switch Pick-Up Box Cargo Lamp SCREW, Tapping..... 74/ 20-40.....	22.100	2	400 4074
3.671-14	BULB, Pick-Up Box Cargo Lamp 74/ 20-40.....	3.318	1	942 498
3.690-1	SWITCH, Hazard Warning 74 80..... 75 80 (Used With Black Knob)..... 75 80 (Used With Red Knob).....	1 1 1	989 679 989 679 ****
	**** When used with Red Knob you must order; 1-989 679, 1-989 675, 1-987 911 and 1-400 0056.			
3.690-2	KNOB, Hazard Warning 74/ 10-20-40..... 74/75 80..... 76 80-90.....	1 1 1	321 7216 989 675 321 7216
3.690-3	BEZEL, Hazard Warning Switch 74/ 80.....	3.146	1	987 911
3.690-5	ATTACHING PARTS, Hazard Warning Flasher To Instrument Panel NUT..... 74/ 80.....	3.145	1	400 0056
3.690-6	BRACKET, Flasher Mounting (Hazard Warning) 74 80.....	3.330	1	932 133
3.690-7	ATTACHING PARTS, Flasher Mounting Bracket To Instrument Panel SCREW, Machine..... 74 80..... NUT, Hexagon..... 74 80.....	17.598 17.412	1 1	G159582 G271163
3.690-9	FLASHER, Hazard Warning 74/.....	1	545 2266
3.700-1	TACHOMETER 75 80 (Six)..... 76 80-90 (Six)..... 75 80 (V8)..... 76 80-90 (V8).....	1 1 1 1	535 3761 545 9418 535 3762 545 9419

3.700

ELECTRICAL - INSTRUMENTS

3.700-2	BRACKET, Tachometer						
	75 (Upper) 80			1		545 6519	
	75 (Lower) 80			1		545 6518	
3.700-3	ATTACHING PARTS, Tachometer Bracket						
	SCREW, Tapping..... 75 80		17.660	1		G161903	
	SCREW, Machine..... 75 80...(1/2" Long)		3.306	2		400 1558	
	SCREW, Machine..... 75 80...(1" Long)		17.598	2		G159675 NA	
	NUT, Hexagon..... 75 80		17.412	2		G271163	
3.700-4	ATTACHING PARTS, Tachometer To Ground						
	SCREW, Machine..... 75/ 80-90.....		17.610	1		G9417333	
	NUT, Hexagon..... 75/ 80-90.....		17.412	1		G271166	
3.700-5	BULB, Tachometer						
	75/ 80-90 (GE 1895)		3.215	1		448 7366	
3.700-6	CUP, Tachometer Cover						
	76 80-90.....			1		545 9383	
3.700-7	ATTACHING PARTS, Cup To Tachometer						
	SCREW, Tapping..... 76 80-90.....		17.	1		G163613	
3.720-1	LAMP, Front Fender Side Marker						
	74/		3.726	2		994 020	
3.720-2	ATTACHING PARTS, Housing To Front Fender						
	SCREW, Tapping..... 74/ 10-20-40...(8-18 x 1-1/4").....			2		985 198	
	SCREW, Tapping..... 74/ 10-20-40...(8-18 x 3/4").....			2		985 199	
	SCREW, Tapping..... 74/ 80-90...(8-18 x 3/4").....			4		985 199	
3.720-3	BASE, Front Fender Side Lamp						
	74/ 10-20-40.....			2		981 720	
3.720-4	BULB, Front Fender Side Lamp						
	74/		3.215	2		994 037	
3.720-5	CABLE, Front Fender Side Lamp						
	74/75 80.....		3.740	2		994 033	
3.720-5a	GROMMET, Front Fender Side Marker Cable						
	74/ (Splash Apron) 80-90		13.020	2		929 814	
	74/ (Air Deflector) 80-90		22.050	2		819 305	
3.720-6	CLIP, Front Fender Side Marker Cable						
	74 80.....			2		994 862	
	76 80-90.....			1		545 9095	
3.720-7	ATTACHING PARTS, Clip To Hood Catch Bolt						
	WASHER, Plain..... 74 80.....		17.814	2		G120392	
	NUT, Hexagon..... 74 80.....		17.406	2		G120375	
3.720-8	ATTACHING PARTS, Front Side Marker Cable To Ground						
	SCREW, Machine..... 74/ 80-90		17.598	2		G454783	
	WASHER, Lock..... 74/ 80-90		17.826	2		G178378	
	NUT, Hexagon..... 74/ 80-90		17.412	2		G120361	
3.740-1	LAMP, Rear Side Marker						
	74/ 16-17-20-40.....		3.215	2		994 021	
	74/ (Mounted On Body) 80-90.....		3.215	AR		994 021	
	74/ (Mounted On Tire Bracket) 80-90			1		994 035	
3.740-2	ATTACHING PARTS, Lamp To Body						
	SCREW, Tapping..... 74/ 16-17-20-40-80.....		3.720	AR		985 199	
3.740-3	ATTACHING PARTS, Lamp To Spare Tire Bracket						
	SCREW, Machine..... 74/ 80.....		17.660	2		G163158	

ELECTRICAL - INSTRUMENTS

3.770

3.740-4	BULB, Rear Side Marker Lamp 74/ 16-17-20-40-80.....	3.720	2	994 037
3.741-1	BASE, Rear Side Marker 74/ 16-17.....	2	981 720
3.742-1	CABLE, Rear Side Marker Lamp 74/ 16-17..... 74/ 20-40 (Townside)..... 74/ 20-40 (Thriftside)..... 74 80..... 75/ 80-90.....	3.740 3.740 3.740 3.740 3.740	2 2 2 2 1	994 034 989 428 545 5156 994 033 545 5853
3.742-2	ATTACHING PARTS, Rear Side Marker Cable To Ground SCREW, Machine..... 75 16-17..... SCREW, Machine..... 74/ 20-40-80..... SCREW, Tapping..... 76 80-90..... WASHER, Lock..... 75 16-17..... WASHER, Lock..... 74/ 20-40-80..... NUT, Hexagon..... 74/ 20-40-80..... 17.598 17.826 17.826 17.412	2 2 1 2 2	400 0478 G454783 G163210 G178378 G178378 G120361
3.742-3	GROMMET, Rear Side Marker Lamp Cable To Body 74 80.....	13.020	2	929 814
3.742-4	ATTACHING PARTS, Cable To Body CLIP..... 74 80.....	13.078	2	944 797
3.770-1	SWITCH, Heated Rear Window Control 75/ 10.....	23.330	1	545 4611
3.770-1a	ATTACHING PARTS, Heated Rear Window Switch To Instrument Panel SCREW, Tapping..... 75/ 10.....	29.460	2	400 2327
3.770-2	BEZEL, Heated Rear Window Switch 75/ 10.....	1	545 4612
3.770-3	KNOB, Heated Rear Window Switch 75/ 10.....	23.330	1	545 6580
3.770-4	SOCKET, Heated Rear Window Indicator Lamp 75/ 10...(Incl. Bulb).....	1	357 7560
3.770-4a	BULB, Heated Rear Window 75/ (GE 1445) 10.....	3.215	1	320 4552
3.770-5	BRACKET, Heated Rear Window Indicator Lamp 75/ 10.....	1	545 4957
3.770-6	ATTACHING PARTS, Heated Rear Window Indicator Lamp Bracket To Switch SCREW, Tapping..... 75/ 10.....	17.660	1	G163162
3.770-7	RELAY, Heated Rear Window 75/ 10.....	1	545 4614
3.770-8	ATTACHING PARTS, Heated Rear Window Relay SCREW, Tapping..... 75/ 10.....	29.460	2	400 2327
3.770-9	GRID REPAIR KIT, Heated Rear Window 75/ 10.....	1	812 3332
3.770-10	STRAP, Harness To Tailgate 75/ 10.....	4.142	1	998 604

3.780

ELECTRICAL - INSTRUMENTS

3.780-1	HARNESS, Trailer Towing						
	74/75	10 (On Vehicle-* 3-3)	3.781	1	535	3440	
	76	10 (On Vehicle-* 3-3)		1	546	0028	
	74/	10 (On Vehicle-* 3-4)		1	545	5279	
	74/	10 (On Trailer-* 3-3)	3.781	1	545	5349	
	74/	10 (On Trailer-* 3-4)		1	545	5280	
3.780-2	GROMMET, Trailer Harness Thru Rear Panel						
	74/	10 (* 3-4)		1	806	459	
3.780-3	ATTACHING PARTS, Harness To Body						
	CLIP	74/ 10 (* 3-4)	3.165	4	535	0352	
3.780-4	BRACKET, Trailer Harness Receptacle						
	74/	10 (* 3-3)	3.781	1	535	3442	
3.780-5	ATTACHING PARTS, Receptacle To Trailer Hitch						
	BOLT, Hexagon	74/ 10 (* 3-3)	17.038	4	G9419101		
	NUT, Lock	74/ 10 (* 3-3)	3.781	4	400	5098	
3.780-6	BREAKER, Trailer Towing Harness Circuit						
	74/	10 (* 3-3)	3.781	1	545	5362	
3.780-7	RELAY, Trailer Towing Harness						
	74/	10 (* 3-3)	3.781	3	545	5283	
3.780-8	ATTACHING PARTS, Circuit Breaker Terminals						
	NUT, Hexagon	74/ 10 (* 3-3)	17.412	2	G271169		
3.780-9	ATTACHING PARTS, Relay And Circuit Breaker To Cover						
	SCREW, Machine	74/ 10 (* 3-3)	17.269	6	G179276		
	NUT, Hexagon	74/ 10 (* 3-3)	17.412	6	G271169		
3.780-10	BOX, Trailer Towing Relay And Circuit Breaker						
	74/	10 (* 3-3)	3.781	1	545	5334	
3.780-11	COVER, Trailer Towing Relay And Circuit Breaker Box						
	74/	10 (* 3-3)	3.781	1	545	5345	
3.780-11a	ATTACHING PARTS, Cover To Relay Box						
	SCREW, Machine	74/ 10 (* 3-3)	17.610	4	G191940		
3.780-12	ATTACHING PARTS, Trailer Towing Relay Box To Crossmember						
	BOLT, Hexagon	74/ 10 (* 3-3)	23.402	2	400	4504	
	WASHER, Lock	74/ 10 (* 3-3)	17.826	2	G174916		
	NUT, Hexagon	74/ 10 (* 3-3)	17.406	2	G120375		
3.786-1	BUZZER, Seat Belt Warning						
	76	10-20-40		1	322	2532	
3.789-1	TIMER, Seat Belt Warning (Thermal Relay)						
	76	10-20-40		1	545	9298	