

## GENERAL INFORMATION

### INTRODUCTION . . .

This Master Parts Catalog F-74076 contains replacement parts information for the model years 1974 thru 1976.

Before ordering replacement parts, you must first identify the vehicle by its model year and series. Information to assist you is located on later pages.

For your convenience, this parts catalog has been issued in two sections. Section one consists of text copy, specific illustrations listing part numbers, Body Miscellaneous, and PAKS. Section two, the Illustration Supplement, consists of general illustrations and is under a separate cover. It has been assigned form number F-75076.

The two sections have been further subdivided into subsections called groups. These groups list replacement parts for particular areas of the car. An explanation of the make-up of these catalog groups follow.

Main units of the car are identified by the number preceding the decimal in any group number. Listed below are all the group numbers and group names as shown in the catalog.

NAME	GROUP	NAME	GROUP
Accessories . . . . .	15	Hardware . . . . .	23
Air Conditioning . . . . .	13	Heater . . . . .	13
Axle . . . . .	9	Hood . . . . .	12
Body Hardware . . . . .	27	Hydramatic Transmission . . . . .	6
Body Mouldings . . . . .	26	Instrument Panel . . . . .	22
Body Sheet Metal . . . . .	20	Instruments . . . . .	3
Brakes . . . . .	8	Manual Transmission . . . . .	6
Bumpers . . . . .	12	Metal Enclosures . . . . .	28
Channels . . . . .	25	Pick-Up Box . . . . .	31
Chassis Miscellaneous . . . . .	14	Power Steering . . . . .	10
Clutch . . . . .	5	Propeller Shafts . . . . .	9
Cooling . . . . .	2	Rear Quarter Hardware . . . . .	24
Cowl Vent . . . . .	22	Rear Suspension . . . . .	11
Doors . . . . .	23	Road Springs . . . . .	11
Electrical . . . . .	3	Seats . . . . .	29
Emission . . . . .	4	Shifting . . . . .	7
Engine . . . . .	1	Shocks . . . . .	11
Exhaust . . . . .	4	Soft Trim . . . . .	29
Fenders . . . . .	12	Special Equipment . . . . .	40
Folding Tops . . . . .	28	Steering Gear . . . . .	10
Fourspeed Transmission . . . . .	6	Threespeed Transmission . . . . .	6
Frames . . . . .	11	Transfer Case . . . . .	18
Front Suspension . . . . .	10	Transmission . . . . .	6
Fuel . . . . .	4	Wheels . . . . .	8
Glass . . . . .	25	Windshield Wiper . . . . .	22
Grille . . . . .	2		

Individual parts are assigned a group number. The first number identifies the main unit. Following the decimal is the subgroup number under which all parts of the same name and function are listed. *Example: Group 1.059 HEAD, Cylinder . . . '1.'* indicates that it is an engine part, *'059'* is the subgroup number where part numbers of cylinder heads can be located.

## GENERAL INFORMATION

The suffix, *example: '-10'*, should not be interpreted as being part of the group number. It merely serves as a reference number to tie in the Alphabetical Index and the Illustrations Supplement callouts with the text section group numbers.

Due to their nature and use, many parts may appear in more than one group in this catalog. Each of these parts is assigned an identifying primary group number. This is the number under which the part is priced in the American Motors Parts and Distribution Services Division Jeep Price List, listed on Parts Storage Location Labels, and stored in American Motors Parts and Distribution Services Division Warehouses and Dealerships. Parts should always be ordered by their identifying primary group number, part number, and noun name.

### LOCATING PART NUMBERS . . .

#### GROUP 26 -

The driver's side on Left Hand Drive is the left hand side of the vehicle; on Right Hand Drive it is the right hand side of the vehicle. This is the governing factor in determining whether a part is left or right hand.

*Body Mouldings Production Installed . . .* Refer to the Special Information and Illustrations Index at the start of Group 26. Select the illustration title which would most logically include the part you require. Turn to the page indicated by the index and visually locate the part in question. The part number you seek will be found adjacent to the part.

*Body Mouldings Special Dealer Treatment . . .* Ornamentation changes by dealers, to satisfy individual owner requests have not been cataloged. The dealer assumes the responsibility for correctness of replacement parts.

#### BALANCE OF GROUPS -

First locate the group number of the part required. Any one of the following three methods can be used.

*Method 1:* Refer to the Illustrations Index located at the start of the Illustration Supplement F-75076. Select the illustration title which would most logically include the part you require. Turn to the page indicated by the index and visually locate the part in question. The group number you seek will be found adjacent to the part. Locate that group number in the text section.

*Method 2:* If the '*Noun*' name of the part you seek is known, refer to the Alphabetical Index located in the front of the text section. The group number you seek will be found adjacent to the parts noun name. Locate that group number in the text section.

*Method 3:* If the group number of the part you seek is already known, locate that group number in the text section.

Next, interpret the information under the group number as follows:

#### YEAR -

This column will indicate the year(s) to which a part applies. When a slash (/) is shown following a year it indicates the model year the part was first used, and that it is in use through the current year. For example:

75 . . . . Indicates the part was used for 75 model year only.

74/ . . . . Indicates the part was used for 74 thru 76 model years.

## GENERAL INFORMATION

On occasion, instead of the above information, the year column will carry the trim number applicable to the part. (*For the location of the plate bearing the vehicle's applicable trim number, refer to the Vehicle Identification section following.*)

### MODEL -

This column carries pertinent information relative to the specific *model, series, option, size, type, etc.* applicable to the part listed. Abbreviations used can be clarified by referring to the Abbreviations and Codes Index. The absence of a listing in this column indicates the part is applicable to every car so equipped, built for the model year shown in the 'Year' column. Of special importance are those listings which include an asterisk, *i.e. (\* 11-1)*. This is meant to refer the reader to the notes appearing on the first page of that respective group. These notes usually pertain to a running change which may have occurred in the parts used to manufacture a given model. This first or 'Special Information' page of each group carries special, pertinent information relative to selecting correct parts from those listed within the group.

### PAKS -

If the part in question happens to be a *Package, Assembly, Kit, or Set*, you will in many instances find an illustration reference number in this column. Locate that typical illustration in the PAKS section found near the rear of the catalog, and you can visually interpret the content of the part number.

### PRIMARY GROUP NUMBER -

If a part has a primary group number which is different from the one shown in the heading of that group, its correct primary group number will be shown in this column. This is done as a service to those dealers who bin their parts by the primary group number.

### PER CAR -

This column will list the number of pieces of a part required for the specific application listed, not the total number of this part which may be used on the entire car.

### PART NUMBER -

The number listed in this column is the number by which the part you require must be ordered. Since certain automotive parts are readily available locally, American Motors does not offer them for service replacement. The presence of a NA adjacent to the part number indicates that it is not available from American Motors.

### ABBREVIATIONS INDEX . . .

The Abbreviations Index is located after the Alphabetical Index. Definitions to descriptive information abbreviated in the catalog are defined in the index. For example:

WPS . . . . . With Power Steering

### ACCESSORIES . . .

Many parts which were previously listed under the Jeep general heading '*Special Equipment and Accessories - Group 35*' have now been cataloged with parts more closely related to their function. For example: Exhaust Emission is now located in Group 1.000 Engine, and Group 4.000 Fuel - Exhaust. Heater - Defroster is located in Group 13.000 Heater - Air Conditioning. Conventional accessories such as Radios, Antennas, Outside Rear View Mirrors, etc. will be listed in separate Accessories Catalog and Price List.

## GENERAL INFORMATION

### ALPHABETICAL INDEX . . .

Alphabetical listings followed by a double digit group number indicate that the part may be located in the illustrated text section of the group indicated. For example:

MOULDING, Rear Window Finish..... 26

Alphabetical listings followed by a group number indicate that the part may be located in the text copy section of the group indicated. For example:

PUMP ASSEMBLY, Water..... 2.080-1

### ATTACHING PARTS . . .

Attaching Parts are not listed in the Alphabetical Index. However, the purpose for which the parts are required is shown near the group listing under the item with which they are used or attached. For primary group number reference, refer to *PRIMARY GROUP NUMBER* information.

### ILLUSTRATION SUPPLEMENT . . .

#### ILLUSTRATIONS INDEX -

This index is located at the front of the Illustration Supplement F-75076. It has been subdivided into subsections called groups and alphabetized within each group. To use this index, select the illustration title which would most logically describe the part you require. Turn to the page indicated by index and visually locate the part in question.

#### ILLUSTRATIONS -

The group number will be found adjacent to the part. Locate this group number in the text section of the catalog. If a PO precedes the group number on an illustration, it indicates that the part as illustrated is available *ONLY* as part of an assembly.

### MR - MODIFICATION OF PARTS . . .

At various times one service part number is supplied which when modified by the dealer by cutting, drilling, bending, etc. serves as a replacement for similar parts. Parts supplied in this manner are identified by the letters MR in the code column or in the group heading.

### NA - PARTS NOT AVAILABLE FOR SERVICE . . .

Part numbers are listed in this catalog even though they are not available for service. These part numbers are listed for reference only and are identified by the letters NA in the code column.

### NC - PART SUPPLIED IN NEUTRAL COLOR . . .

At various times one service part number is supplied in a neutral color, which when painted to match by the dealer, serves as a replacement for similar parts. Parts supplied in this manner are identified by the letters NC in the code column or in the group heading.

### PARTS NOT LISTED IN THIS CATALOG . . .

Parts not listed in this catalog for the specific vehicles that this catalog is issued for, are to be considered as not supplied for service by the Parts and Distribution Services Division.

## GENERAL INFORMATION

### PRICES . . .

Suggested prices for all parts listed in this catalog can be found in separate Jeep Parts Price List W-1164.

### PRIME PAINTING . . .

Service replacement sheet metal parts are always serviced in prime and certain other categories of parts are serviced in one color only. They are not available from American Motors in finished colors, therefore, the dealer must repaint to color desired.

### SUBSTITUTED PARTS . . .

If a part has been substituted, the Price List will indicate the replacing part numbers or replacing parts, if available, will be supplied when the original part number is ordered even though the Price List does not indicate the change. If the substitution information was available for inclusion in the parts catalog at time of publication. This substitution information will then be listed adjacent to the original part number. However, if it is more practical for an individual to obtain particulars from the Price List, the words (Ref. Pr. List) have been printed in place of substituting part numbers.

### TRIM NUMBER . . .

Trim items are available by part number. By choosing the applicable description, color, or trim number and reading across to the specific model column you will obtain the part number of the required item. Trim numbers having an additional letter suffix such as B, C, D, etc., are used only when the part is peculiar to a particular trim number.

Trim numbers listed without a letter suffix indicate the part applies to all models having a part number entered in its specific model column.

Cloth and vinyl materials used in fabricating trim assemblies, not part of a dielectric insert, are available in bulk form. When ordering, please specify the exact size desired since these materials sold only by the running yard vary in widths of approximately 54 inches to 64 inches.

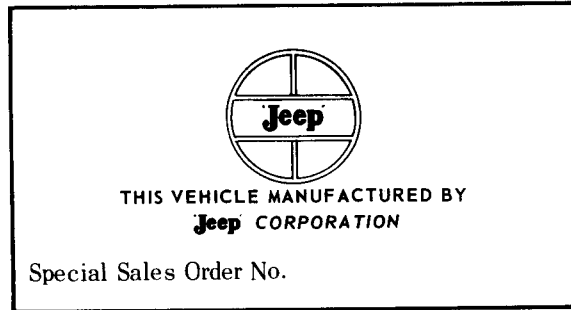
### SPECIAL BUILT VEHICLES . . .

#### SPECIAL SALES ORDER NO. -

Vehicle equipment deviations by dealers, to satisfy individual owner requests, have not been cataloged. However, to assist in ordering replacement parts, for vehicles built by production with other than Standard Equipment, an identification plate is attached to the dash panel underneath the hood. On the majority of vehicles requiring this plate, only a minority of parts are peculiar. Usually, a dealer will recognize which parts are nonstandard on a particular series and model.

## GENERAL INFORMATION

When ordering nonstandard replacement parts for a vehicle having the aforementioned identification plate (See Illustration), please *FURNISH THE FULL AND COMPLETE SPECIAL SALES ORDER NO. AS WELL AS THE VEHICLE SERIAL NUMBER and ENGINE BUILD CODE NUMBER*, and a description of the parts required to the *NATIONAL PARTS DISTRIBUTION CENTER ON FORM NO. F-259 MR3*.

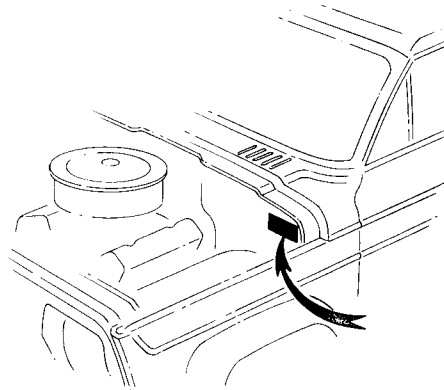


## WELDING ASSEMBLIES . . .

A *Welding Assembly* consists of two or more metal parts, welded together at the plant in a fixture for accuracy. Parts for assemblies which cannot be welded to advantage in the field, are not listed except in occasional instances where the cost of a welding assembly would be excessive.

# GENERAL INFORMATION

## VEHICLE IDENTIFICATION . . . .



This 13 digit number can be found stamped on the bottom line of the metal plate which is affixed to the upper left corner of the firewall under the hood. Beginning with SIX DIGIT Serial Number 100000 the "Alphabetical" GVW rating code is replaced by the actual "Numerical" weight designation.

1974 V.I.N.

### PRIOR TO SIX DIGIT SERIAL NO. 100000

<b>J</b>	<b>4</b>	<b>A</b>	<b>1</b>	<b>5</b>	<b>4</b>	<b>C</b>	<b>N</b>	<b>0</b>	<b>0</b>	<b>0</b>	<b>0</b>	<b>1</b>
MFG. CODE	MODEL YEAR	TRANS-MISSION	MODEL	BODY STYLE	GVW RATING	ENGINE	SEQUENTIAL SERIAL NO.					

### BEGINNING WITH SIX DIGIT SERIAL NO. 100000

<b>J</b>	<b>4</b>	<b>A</b>	<b>1</b>	<b>5</b>	<b>4</b>	<b>N</b>	<b>1</b>	<b>0</b>	<b>0</b>	<b>0</b>	<b>0</b>	<b>0</b>
MFG. CODE	MODEL YEAR	TRANS-MISSION	MODEL	BODY	ENGINE	SEQUENTIAL SERIAL NO.						

This number is decoded as follows:

FIRST DIGIT / Manufacturer

J - Jeep Corporation

SECOND DIGIT / Model Year

4 - 1974

THIRD DIGIT / Plant - Transmission - Drive

- |                               |                            |
|-------------------------------|----------------------------|
| A - Toledo - Hydramatic - LHD | K - CKD - 3-Speed - RHD    |
| B - CKD - Hydramatic - LHD    | M - Toledo - 4-Speed - LHD |
| F - Toledo - 3-Speed - LHD    | N - Toledo - 4-Speed - RHD |
| G - Toledo - 3-Speed - RHD    | O - CKD - 4-Speed - LHD    |
| J - CKD - 3-Speed - LHD       | P - CKD - 4-Speed - RHD    |

## GENERAL INFORMATION

### FOURTH and FIFTH DIGIT / Series

14 - Wagoneer	- 110WB	45 - Truck (J-10)	- 131WB
15 - Wagoneer (Custom)	- 110WB	46 - Truck (J-20)	- 131WB
16 - Cherokee	- 110WB	63 - Universal	- 84WB (CKD)
17 - Cherokee 'S' (Custom)	- 110WB	64 - Universal	- 104WB (CKD)
25 - Truck (J-10)	- 119WB	83 - Universal	- 84WB
26 - Truck (J-10)		84 - Universal	- 104WB
(Export Only)	- 119WB		

### SIXTH DIGIT / Body Style

1 - Thriftside - Pickup	7 - 2 Door Wagon
2 - Townside - Pickup	8 - Stripped Chassis
4 - 4 Door Wagon	F - Full Cab
5 - Open Body	H - Half Cab
6 - Cab and Chassis	

### SEVENTH DIGIT / GVW (Prior To Six Digit Serial No. 100000 A Vehicle Weight Alphabetical Code Was Used. Translation Follows.)

C - 5600 - 14-15-16-17-25-45	S - 4500 - 83 (Heavy Duty)
E - 6000 - 14-15-16-17	T - 3750 - 83
K - 7200 - 46	V - 3900 - 84
M - 6500 - 46	W - 5200 - 25-45
P - 4200 - 84	X - 6000 - 26 (Export Only)
R - 4750 - 84 (Heavy Duty)	Z - 8000 - 46

### SEVENTH DIGIT / Engine (Beginning With Six Digit Serial No. 100000 A Vehicle Engine Alphabetical Code Was Used. Translation Follows.)

A - SIX - 258 CID - Regular	N - V8 - 360 CID
E - SIX - 232 CID - Regular	P - V8 - 360 CID - 4 Bbl.
H - V8 - 304 CID	Z - V8 - 401 CID

### EIGHTH DIGIT / Engine (Prior To Six Digit Serial No. 100000 A Vehicle Engine Alphabetical Code Was Used. Translation Follows.)

A - SIX - 258 CID - Regular	N - V8 - 360 CID
E - SIX - 232 CID - Regular	P - V8 - 360 CID - 4 Bbl.
H - V8 - 304 CID	Z - V8 - 401 CID

### EIGHTH thru THIRTEENTH DIGIT / Serial Number (The first Six (6) Digit Sequential Serial Number Used Begins With 100000.)

Sequential Serial Number - Begins With 100000

### NINTH thru THIRTEENTH DIGIT / Serial Number (Prior To Six Digit Serial No. 100000 A Five Digit Sequential Serial Number Was Used.)

Sequential Serial Number - Begins With 00001 and Ends With 99999



# GENERAL INFORMATION

1975 V. I. N.

This 13 digit number can be found stamped on the bottom line of the metal plate which is affixed to the upper left corner of the firewall under the hood.

<b>J</b>	<b>5</b>	<b>M</b>	<b>8</b>	<b>3</b>	<b>A</b>	<b>H</b>	<b>0</b>	<b>0</b>	<b>0</b>	<b>0</b>	<b>0</b>	<b>1</b>
MFG. CODE	MODEL YEAR	TRANS-MISSION	MODEL	GVW	ENGINE	SEQUENTIAL SERIAL NO.						

This number is decoded as follows:

FIRST DIGIT / Manufacturer

J - Jeep Corporation

SECOND DIGIT / Model Year

5 - 1975

THIRD DIGIT / Plant - Transmission - Drive

A - Toledo - Hydramatic - LHD	K - CKD - 3-Speed - RHD
B - CKD - Hydramatic - LHD	M - Toledo - 4-Speed - LHD
F - Toledo - 3-Speed - LHD	N - Toledo - 4-Speed - RHD
G - Toledo - 3-Speed - RHD	O - CKD - 4-Speed - LHD
J - CKD - 3-Speed - LHD	P - CKD - 4-Speed - RHD

FOURTH and FIFTH DIGIT / Model

14 - Wagoneer - 110WB	45 - Truck (J-10) - 131WB
15 - Wagoneer (Custom) - 110WB	46 - Truck (J-20) - 131WB
16 - Cherokee - 110WB	63 - 'Jeep' - 84WB (CKD)
17 - Cherokee 'S' (Custom)- 110WB	64 - 'Jeep' - 104WB (CKD)
25 - Truck (J-10) - 119WB	83 - 'Jeep' - 84WB
26 - Truck (J-10) (Export Only) - 119WB	84 - 'Jeep' - 104WB

SIXTH DIGIT / GVW Rating

A - 3750 - 83	M - 6025 - 14-15-16-17-25-26
B - 4000 - 84	N - 6500 - 26-46
C - 4500 - 83, HD, VDO Only	R - 7200 - 46
D - 4750 - 84, HD, VDO Only	X - 8000 - 46

SEVENTH DIGIT / Engine

A - SIX - 258 CID - 110 H.P.	N - V8 - 360 CID - 175 H.P.
E - SIX - 232 CID - 100 H.P.	P - V8 - 360 CID - 195 H.P.
H - V8 - 304 CID - 150 H.P.	Z - V8 - 401 CID - 4 Bbl.

EIGHTH thru THIRTEENTH DIGIT / Serial Number

Sequential Serial Number - Begins With 000001

## GENERAL INFORMATION

1976 V.I.N.

This 13 digit number can be found stamped on the bottom line of the metal plate which is affixed to the upper left corner of the firewall under the hood.

<b>J</b>	<b>6</b>	<b>M</b>	<b>8</b>	<b>3</b>	<b>A</b>	<b>H</b>	<b>0</b>	<b>0</b>	<b>0</b>	<b>0</b>	<b>0</b>	<b>1</b>
MFG. CODE	MODEL YEAR	TRANSMISSION	MODEL	GVW	ENGINE	SEQUENTIAL SERIAL NO.						

This number is decoded as follows:

FIRST DIGIT / Manufacturer

J - Jeep Corporation

SECOND DIGIT / Model Year

6 - 1976

THIRD DIGIT / Plant - Transmission - Drive

A - Toledo - Hydramatic - LHD

F - Toledo - 3-Speed - LHD

G - Toledo - 3-Speed - RHD

M - Toledo - 4-Speed - LHD

FOURTH and FIFTH DIGIT / Model

14 - Wagoneer - 110WB

15 - Wagoneer (Custom) - 110WB

16 - Cherokee - 110WB

17 - Cherokee 'S' (Custom) - 110WB

25 - Truck (J-10) - 119WB

26 - Truck (J-10)

(Export Only) - 119WB

45 - Truck (J-10) - 131WB

46 - Truck (J-20) - 131WB

83 - 'Jeep' - 84WB

84 - 'Jeep' - 104WB

93 - 'Jeep' - 94WB

SIXTH DIGIT / GVW Rating

A - 3750 - 83, 84, 93

E - 4150 - 83, 84, 93, HD

M - 6025 - 14, 15, 16, 17, 25, 45

N - 6025 - 14, 15, 16, 17, 25, 45

R - 7200 - 46

X - 8000 - 46

SEVENTH DIGIT / Engine

A - SIX - 258 CID - 110 H.P.

E - SIX - 232 CID - 100 H.P.

H - V8 - 304 CID - 150 H.P.

N - V8 - 360 CID - 175 H.P.

P - V8 - 360 CID - 195 H.P.

Z - V8 - 401 CID - 4 Bbl.

EIGHTH thru THIRTEENTH DIGIT / Serial Number

Sequential Serial Number - Begins With 000001

## GENERAL INFORMATION

### MODEL IDENTIFICATION . . .

---

1974

---

WAGONEER - CHEROKEE (10) SERIES . . . 110" Wheelbase

7414 . . . . . Wagoneer (Standard)	7416 . . . . . Cherokee (Standard)
7415 . . . . . Wagoneer (Custom)	7417 . . . . . Cherokee (Custom)

TRUCK (20) SERIES . . . 119" Wheelbase

7425 . . . . . GVW "C", "W"	7426 . . . . . GVW "X" (Export Only)
-----------------------------	--------------------------------------

TRUCK (40) SERIES . . . 131" Wheelbase

7445 . . . . . GVW "C", "W"	7446 . . . . . GVW "K", "M", "Z"
-----------------------------	----------------------------------

UNIVERSAL (80) SERIES - (CJ-5)(CJ-6)

7483 . . . . . 84WB (CJ-5)	7484 . . . . . 104WB (CJ-6)
----------------------------	-----------------------------

---

1975

---

WAGONEER - CHEROKEE (10) SERIES . . . 110" Wheelbase

7514 . . . . . Wagoneer (4 Door Station Wagon)	7516 . . . . . Cherokee (2 Door Station Wagon)
7515 . . . . . Wagoneer (Custom - 4 Door Station Wagon)	7517 . . . . . Cherokee 'S' (Custom - 2 Door Station Wagon)

TRUCK (20) SERIES . . . 119" Wheelbase

7525 . . . . . J-10 (GVW "M")	7526 . . . . . J-20 (Export Only)
-------------------------------	-----------------------------------

TRUCK (40) SERIES . . . 131" Wheelbase

7545 . . . . . J-10 (GVW "M")	7546 . . . . . J-20 (GVW "N", "R", "X")
-------------------------------	---

UNIVERSAL (80) SERIES - (CJ-5)(CJ-6)

7583 . . . . . 84WB (CJ-5)	7584 . . . . . 104WB (CJ-6)
----------------------------	-----------------------------

---

1976

---

WAGONEER - CHEROKEE (10) SERIES . . . 110" Wheelbase

7614 . . . . . Wagoneer (4 Door Station Wagon)	7616 . . . . . Cherokee (2 Door Station Wagon)
7615 . . . . . Wagoneer (Custom - 4 Door Station Wagon)	7617 . . . . . Cherokee 'S' (Custom - 2 Door Station Wagon)

TRUCK (20) SERIES . . . 119" Wheelbase

7625 . . . . . J-10 (GVW "M")	7626 . . . . . J-20 (Export Only)
-------------------------------	-----------------------------------

TRUCK (40) SERIES . . . 131" Wheelbase

7645 . . . . . J-10 (GVW "M")	7646 . . . . . J-20 (GVW "N", "R", "X")
-------------------------------	---

UNIVERSAL (80) SERIES - (CJ-5)(CJ-6)

7683 . . . . . 84WB (CJ-5)	7684 . . . . . 104WB (CJ-6)
----------------------------	-----------------------------

UNIVERSAL (90) SERIES - (CJ-7)

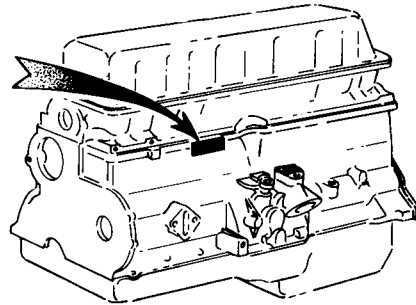
7693 . . . . . 84WB (CJ-7)
----------------------------

---

## GENERAL INFORMATION

### ENGINE IDENTIFICATION . . .

The 232 and 258 Engine Build Code is stamped on the pad on the right upper center of the engine block.



The Engine Code consists of six digits. The example 701-A-20 is interpreted as follows:

FIRST DIGIT / Year

7 - 1974

8 - 1975

9 - 1976

SECOND and THIRD DIGIT / Month

01 - January

02 - February

FOURTH DIGIT / Type

A - OHV SIX 258 - Single Bbl. Carb. - 8.0 to 1 Comp. Ratio

E - OHV SIX 232 - Single Bbl. Carb. - 8.0 to 1 Comp. Ratio

FIFTH DIGIT / Day

20 - 20th Day of the Month

To identify odd size engines, the following letter coding will be used.

B - .010 Oversize Cylinder Bores

C - .010 Oversize Camshaft Bores

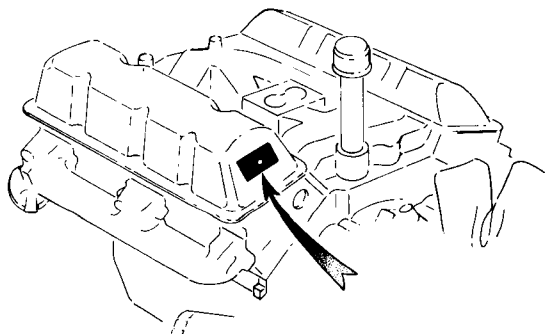
M - .010 Undersize Main Bearings

P - .010 Undersize Pins

PM - .010 Undersize Pins and Main Bearings

This letter code is stamped on the oil filter boss next to the block. The V8 Engine Build Code is stamped on the date code plate on the front of the right side rocker arm cover.

The Engine Code consists of six digits. The example 709-N-20 is interpreted as follows:



## GENERAL INFORMATION

FIRST DIGIT / Year

7 - 1974

8 - 1975

9 - 1976

SECOND and THIRD DIGIT / Month

09 - September

10 - October

FOURTH DIGIT / Type

H - V8 304 - 8.40 to 1 Comp. Ratio - Two Bbl. Carb.

N - V8 360 - 8.25 to 1 Comp. Ratio - Two Bbl. Carb.

P - V8 360 - 8.25 to 1 Comp. Ratio - Four Bbl. Carb.

Z - V8 401 - 8.35 to 1 Comp. Ratio - Four Bbl. Carb.

T - V8 401 - 8.35 to 1 Comp. Ratio - Four Bbl. Carb. (Heavy Duty)

To identify odd size engines, the following letter coding will be used.

B - .010 Oversize Cylinder Bores

C - .010 Oversize Camshaft Bores

M - .010 Undersize Main Bearings

P - .010 Undersize Pins

PM - .010 Undersize Pins and Main Bearings

This letter can be found stamped to the upper half of the Engine Build Code plate.

### PAINT OR TRIM . . .

Identification of paint and trim options on each vehicle is shown on the Vehicle Identification (VIN) plate attached to the engine firewall on the left hand side.

This information should be used to determine paint color, trim number and included with the part number and description when ordering trim parts.

Paint or Trim Option 999 designates special paint or trim, therefore the vehicle serial number should be supplied. When ordering parts for vehicles not equipped with the option plate, samples of the upholstery or trimming should accompany orders for trim parts. Serial number, model of vehicle and body type should also be listed.

We assume no responsibility for errors in color specification due to incorrect trim code number supplied. We cannot accept cancellation of orders for trim parts after they are placed, and these parts cannot be returned for credit.

*BULK PAINT* is not available from the factory, however, *Aerosol* or *Brush Top Touchup Paint* is listed in the following chart. All colors shown are available from your local Ditzler and Dupont paint jobber by requesting the intermix formula shown in the intermix number chart.

*SPECIAL ORDER* or *FLEET PAINTS* are available as *Aerosol* or *Brush Top Touchup Paint* only if listed on the following Charts or in the Accessories Catalog.

To determine the paint manufacturer's intermix formula for a particular vehicle, proceed as follows:

1. Determine the paint option number from the Paint and Trim Option Plate on the vehicle.
2. Locate this number in the following chart to determine the name of the color on the vehicle except for Paint Option 999. Option 999 indicates special paint and when ordering paint for Option 999, please refer to the *SPECIAL SALES ORDER PLATE* affixed adjacent to the Vehicle Identification Plate on the left hand side of the firewall. Take the Special Sales Order Number and contact the National Parts Distribution Center for the correct paint under that sales order number.

GENERAL INFORMATION

1974

EXTERIOR COLORS . . .

MONOTONE PAINT CODE NO.	TU-TONE PAINT CODE	TU-TONE PAINT CODE	COLOR NAME	SPRAY	BRUSH	DITZLER CODE **	DUPONT CODE #
	MODELS (1) 16-17	MODELS (2) 25-26 45-46		CAN PART NO.	TOP PART NO.		
1	...	...	Primer .....	899 0451	...	.....	.....
	...	...	Leveler .....	899 0452	...	.....	.....
21	496	544	Raven Black .....	...	...	9000	93-005
81	...	...	Transport Yellow .....	...	...	80020	83928
134	...	...	Olive Drab .....	...	...	42955	29149
135	...	...	Omaha Orange .....	...	...	60281	83215
221	...	...	Federal Gray .....	...	...	31817	93-91640
394	497	545	Marlin Blue .....	...	...	13156	98001
432	...	...	Champagne White .....	981 857	...	8818	7314
492	500	553	Jetset Blue (M) .....	986 289	...	14529	7905
504	...	...	Forest Green .....	...	...	44586	7762
509	...	...	Renegade Plum .....	...	...	50902	7876
510	...	...	Renegade Yellow .....	...	...	82054	7875
512	519	550	Fairway Green .....	899 7011	899 7016	44760	5515
514	521	551	Fawn Beige .....	899 7008	899 7013	23853	5519
515	522	552	Trans-Am Red .....	899 7009	899 7014	2400	5408
526	549	533	Copper (M)(*1) .....	899 7028	899 7032	24000	43091
526	549	533	Copper (M)(*2) .....	899 7095	899 7096	24176	43698
527	547	531	Golden Tan (M) .....	899 7029	899 7033	24005	43092
528	548	532	Mellow Yellow .....	899 7030	899 7034	81911	43093
529	546	530	Silver Green (M) .....	899 7031	899 7035	44905	43095

- (1) Champagne White (Paint No. 432) used as upper color.
- (2) Champagne White (Paint No. 432) used as lower color.

\*\* Use prefix: DQE - for Ditzler Air Dry Enamel  
DDL - for Ditzler Duracryl Acrylic Lacquer

# Use suffix: L - for Dupont Lucite  
D - for Dupont Dulux  
A - for Dupont Centari Acrylic Air Dry Enamel

\*1 Prior to Serial No. 81652.

\*2 Beginning with Serial No. 81652.

INTERIOR COLORS . . .

COLOR NAME	DITZLER CODE
Black .....	9390
Buff .....	23716
Green .....	44649

GENERAL INFORMATION

1975

EXTERIOR COLORS . . . .

MONOTONE PAINT CODE NO.	TU-TONE PAINT CODE		TU-TONE PAINT CODE		COLOR NAME	SPRAY CAN PART NO.	BRUSH TOP PART NO.	DITZLER CODE**	DUPONT CODE#
	MODELS		MODELS						
	16-17		25-26						
	(1)	(2)	45-46(3)						
1	...	...	...	...	Primer .....	899 0451	...	.....	.....
	...	...	...	...	Leveler .....	899 0452	...	.....	.....
21	575	...	568	...	Raven Black .....	899 7093	899 7088	9000	99
81	...	597	...	...	Transport Yellow .....	.....	.....	80020	83928
134	...	...	...	...	Olive Drab .....	.....	.....	42955	29149
135	...	596	...	...	Omaha Orange .....	.....	.....	60281	83215
221	...	595	...	...	Federal Gray .....	.....	.....	31817	91640
394	576	...	569	...	Marlin Blue (M) .....	.....	.....	13156	98001
504	598	...	...	...	Forest Green .....	.....	.....	44586	7762
514	580	590	571	...	Fawn Beige .....	899 7008	899 7013	23853	5519
515	581	591	572	...	Trans-Am Red .....	899 7009	899 7014	71882	5408
526	583	593	573	...	Copper (M) .....	899 7095	899 7096	24176	43698
528	577	587	570	...	Mellow Yellow .....	899 7030	899 7034	81911	43093
559	574	...	564	...	Pewter Gray .....	899 7092	899 7087	33160	43647
560	578	588	565	...	Reef Green .....	899 7090	899 7085	45020	43648
561	579	589	566	...	Green Apple .....	899 7100	899 7099	45021	43649
562	582	592	567	...	Medium Blue .....	899 7102	899 7101	14801	43650
563	...	594	...	...	Alpine White .....	899 7094	899 7089	0899	43651
584	...	...	...	...	Renegade Orange .....	899 7098	899 7097	60786	43548
585	...	...	...	...	Renegade Blue .....	899 7091	899 7086	14800	43549

(1) Upper color is Alpine White (Code No. 563).

(2) Upper color is Raven Black (Code No. 568).

(3) Lower color is Alpine White (Code No. 563).

\*\* Use prefix: DQE - for Ditzler Air Dry Enamel  
DDL - for Ditzler Duracryl Acrylic Lacquer

# Use suffix: L - for Dupont Lucite  
D - for Dupont Dulux  
A - for Dupont Centari Acrylic Air Dry Enamel

INTERIOR COLORS . . . .

COLOR NAME	DITZLER CODE
Black .....	9390
Blue .....	14736
Buff .....	23716
Green .....	44649

# GENERAL INFORMATION

1976

## EXTERIOR COLORS . . .

PAINT CODE NO.	COLOR NAME	SPRAY	BRUSH	DITZLER CODE**	DUPONT CODE#
		CAN PART NO.	TOP PART NO.		
1	Primer . . . . .	899 0451	...	.....	.....
	Leveler . . . . .	899 0452	...	.....	.....
P1	Classic Black . . . . .	899 0636	899 0757	9000	99
6D	Sand Tan . . . . .	899 3254	899 3266	2820	44111
6P	Firecracker Red . . . . .	899 3258	899 3270	2824	44116
6R	Brilliant Blue . . . . .	899 3259	899 3271	2825	44117
6T	Nautical Blue Poly . . . . .	899 3260	899 3272	2826	44118
6V	Sunshine Yellow . . . . .	899 3261	899 3273	2827	44119
G6	Renegade Orange . . . . .	899 3001	899 3012	2607	42856
G7	Alpine White . . . . .	899 3105	899 3121	2702	43499
G9	Medium Blue Poly . . . . .	899 3123	899 3107	2704	43501
H2	Reef Green Poly . . . . .	899 7090	899 7085	45020	44164
H4	Dark Cocoa Poly . . . . .	899 3110	899 3126	2796	43503
J1	Pewter Gray Poly . . . . .	899 7092	899 7087	33160	44163
FA	Transport Yellow . . . . .	...	...	80020	83928
FB	Omaha Orange . . . . .	...	...	60281	83215
FC	Federal Gray . . . . .	...	...	31817	91640
FE	Forest Green . . . . .	...	...	44586	7762
FH	Olive Drab . . . . .	...	...	42955	29149

\*\* Use prefix: DAR - for Acrylic Enamel  
DDL - for Acrylic Lacquer  
DQE - for Alkyd Enamel

# Use prefix: A - for Acrylic Enamel  
D - for Alkyd Enamel  
L - for Acrylic Lacquer

## MISCELLANEOUS PAINTS . . .

COLOR NAME	DITZLER CODE
Striping Color - Black (72-R-40) . . . . .	9000
Striping Color - Gold (72-R-35) . . . . .	23681
Striping Color - Copper Poly (74-R-24) . . . . .	24007
Engine Enamel - Blue (73-R-87) . . . . .	14688
Engine Enamel - Blue Poly . . . . .	DQE13730
Bumper Insert - Satin Gray (73-R-58) . . . . .	33075

## TELEGRAPHIC CODES . . .

### ORDERING PARTS -

There is a decided cost advantage in using code words for common phrases covering shipping instructions. Established code words are as follows:

- TYEAL . . . . . Ship by Truck C. O. D.
- TYEAN . . . . . Ship by Truck
- YAM . . . . . Ship by Parcel Post
- YAMS . . . . . Ship by Parcel Post Special Delivery



## GENERAL INFORMATION

YANK ..... Ship by Parcel Post C.O.D.  
YAMX ..... Ship by Parcel Post Special Delivery C.O.D.  
YANKL..... Emergency order car tied up  
YAP..... Ship by Air Parcel Post  
YAPL ..... Ship by Air Mail  
YAPLS ..... Ship by Air Parcel Post C.O.D.  
YAPS..... Ship by Air Parcel Post Special Delivery  
YAPSL ..... Ship by Air Parcel Post Special Delivery C.O.D.  
YAPSO ..... Ship by Air Express  
YAT..... Ship by Air Cargo  
YATS..... Ship by Air Cargo C.O.D.  
YEAN ..... Ship by Express  
YEARN..... Ship by Express C.O.D.  
YOLD ..... Ship by Freight  
YOLK ..... Ship by Freight C.O.D.  
YOPSX ..... Ship by Air Express C.O.D.  
YORE ..... Ship by Freight with carload

**EXAMPLE: YAMS BOULEVARD CHICAGO ONE EACH 311 4850 312 9543 313 2723**

Decoded reads:

**SHIP BY PARCEL POST SPECIAL DELIVERY TO BOULEVARD CHICAGO ONE EACH  
PART NUMBERS 311 4850 312 9543 313 2723**

### PARTS INQUIRIES -

There is a decided cost advantage in using code words for common phrases covering inquiries concerning parts orders, inventories and transfers. It is always good practice to use the following code words whenever possible.

COB..... Cancelled off back order. Re-entered on invoice -----  
JAY..... Advise need for quantity of -----  
JEP..... Unable to locate. Duplicating in order to avoid further delay via -----  
YEA..... Refer your or our order number -----  
YEB..... Our records indicate open account - order specifies C.O.D. - Advise  
YEC..... Our records indicate C.O.D. - order specifies open account - Advise  
YED..... Advise model, trim and serial number  
YEE..... Advise - Right or Left, Front or Rear required  
YEF..... Advise - Part number, group number and description do not agree  
YEG..... Advise - Part number and price do not agree  
YEH..... Cancelling. No record of part number, suggest recheck and reorder  
(Form wire)  
YEJ..... Cancelling. Fill from zone stock. (Form wire)  
YEK..... Advise - Right hand drive part  
YEM..... Cancelled - Refer Parts and Accessories Letter -----  
YEMS..... Cancelled - Refer Service Letter -----  
YEN..... Cancelled as requested  
YENS..... Refer parts release and change notice ----- Dated -----  
YEO..... Unable to cancel as requested - Shipped  
YEP..... Incorrect material received - Check Stock  
YEQ..... Cancelling. Purchase locally. Refer to Mr. A. J. Peterson's letter of  
1-17-68 subject "Replacement Glass" for further details. (Form wire)  
YER..... Verify stock depletion  
YES..... Unable to locate in our attempt to cancel as requested. Suggest you  
advise dealer accordingly

## GENERAL INFORMATION

- YET..... Unable to locate in our attempt to cancel. Try to intercept at zone level in consolidated
- YEU..... Believe dealer ordering incorrectly due to extremely limited production of this first type panel. Recheck and reorder including car sequence code number. Cancelling. (Form wire)
- YEV..... Advise present inventory
- YEW..... Advise by wire shipping information on order -----
- YEX..... Advise date on which following invoices were received and screened against back order file
- YEY..... Return at once on Z-269 cheapest way prepaid (Quantity), (Part number). Mail 1 and 2 copies Z-269 attention writer, reference this wire. Advise
- YEYS..... Return at once on Z-269 cheapest way prepaid (Quantity), (Part number). Mail 1 and 2 copies Z-269 attention writer, reference this wire. Advise. Freight charges will be allowed
- YEZ..... Ship at once via (Carrier), (Quantity), (Part number) to (Destination) Advise
- YOA..... Suggest use part ----- and fill from zone stock. Cancelling (Form wire)

When making inquiries by wire regarding a dealer order, be sure to mention the dealers name, city and state as well as the order and invoice numbers if available.

**EXAMPLE: YEW BOULEVARD CHICAGO 195670**

Decoded reads:

**ADVISE BY WIRE SHIPPING INFORMATION OF ORDER 195670 FOR BOULEVARD CHICAGO**