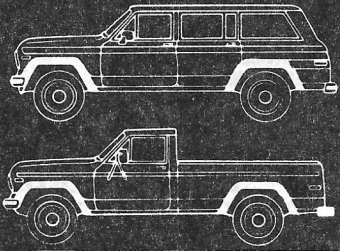


M.R.253



Jeep

Grand Wagoneer/ Truck

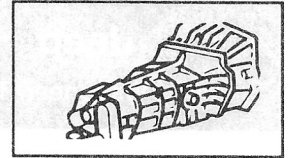
I.S.

INFORMATIONS SERVICE
SERVICE INFORMATION
SERVICE INFORMATIONEN
SERVICE INFORMATION
INFORMACIONES SERVICIO
INFORMAZIONI SERVIZIO
SERVICEINFORMASJONER
SERVICE INFORMATIE
SERVICEINFORMATION
INFORMAÇÃO SERVIÇO

6E

**SEPTEMBER 1985
ENGLISH EDITION**

**1984-1986 JEEP
WAGONEER/TRUCK**



GEARBOXES

Attention: Workshop, Parts Department

MODEL 208 TRANSFER CASE REVISION ANNULUS GEAR

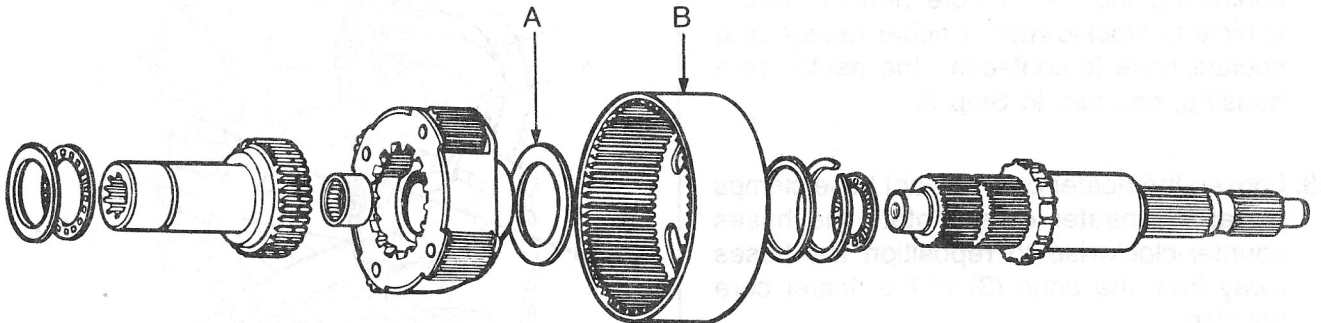
Two annulus gear assemblies were used in Model 208 transfer cases. They are interchangeable.

Type I has a **metal** hub annulus and does require a thrust washer.

Type II has a **nylon** hub annulus and does not require a thrust washer.

PROCEDURE

When replacing a Type I annulus gear with a Type II annulus gear (B), be sure to discard the thrust washer (A) located between the annulus and planetary gears.



86493A

FILING INSTRUCTIONS

Record this I.S. Note on page E-26 and file it in your M.R. 253 binder.