

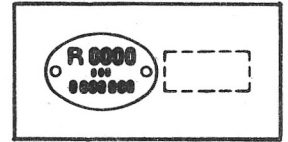
I.S.

INFORMATIONS SERVICE
SERVICE INFORMATION
SERVICE-INFORMATIONEN
SERVICE INFORMATION
INFORMACIONES SERVICIO
INFORMAZIONI SERVIZIO
SERVICEINFORMASJONER
SERVICE INFORMATIE
SERVICEINFORMATION
INFORMAÇÃO SERVIÇO

10E

**AUGUST 1986
ENGLISH EDITION**

**1987 GRAND WAGONEER/
TRUCK MODELS**



GENERAL

Attention: Workshop, Parts Department

UPDATE AND REVISIONS TO WORKSHOP MANUAL

This I.S. Note contains service information unique to **1987 Grand Wagoneer/Truck models**. Only those items that apply to 1987 Grand Wagoneer/Truck models are outlined in this I.S. Note. All other service information in the M.R. 253 remains unchanged. Service information in the M.R. affected by these updates/revisions include:

- General
- Engines
- Electrical
- Gearboxes
- Suspension

FILING INFORMATION

File this I.S. Note in the M.R. 253 Manual



GENERAL CONTENTS





GENERAL	1
Specifications — Identification	1
Vehicle Identification Number (VIN)	1
ENGINES	2
Lubrication System	2
Oil Filter	2
ELECTRICAL	2
Diagnosis	2
Wiring Diagrams	2
GEAR BOXES	3
Transfer Case	3
Model 229 Transfer Case	3
SUSPENSION	3
Wheels and Tires	3
Tires	3

AUGUST 1988
ENGLISH EDITION

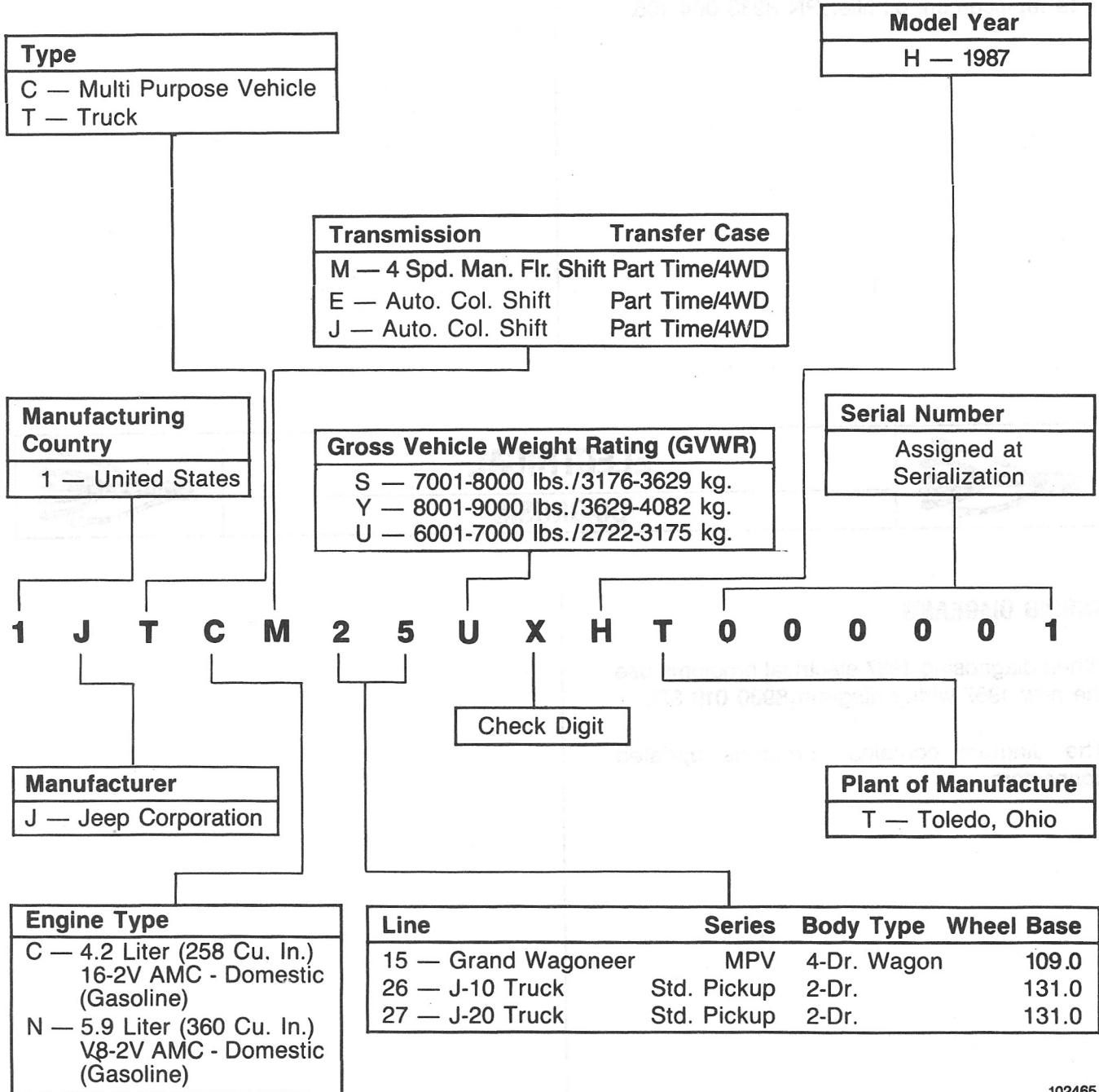


All other trademarks are the property of their respective owners. All other trademarks are the property of their respective owners. All other trademarks are the property of their respective owners.

	GENERAL	
SPECIFICATIONS — IDENTIFICATION		

VEHICLE IDENTIFICATION NUMBER (VIN)

The vehicle identification number is embossed on a metal plate riveted to the left, front corner of the instrument panel. The plate is visible through the driver's side of the windshield base.





ENGINES



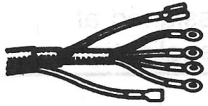
LUBRICATION SYSTEM

OIL FILTER

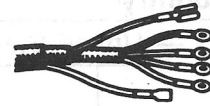
1987 Grand Wagoneer/Truck models are equipped with a metric thread oil filter.

Thread size is M20 x 1.5.

Use replacement oil filter, PN 8933 004 195.



ELECTRICAL DIAGNOSIS



WIRING DIAGRAMS

When diagnosing 1987 electrical problems use the new 1987 wiring diagram, 8980 010 371.

The diagram contains numerous updated connectors.

	GEARBOXES TRANSFER CASE	
----------------------------------------------------------------------------------	------------------------------------------	------------------------------------------------------------------------------------

MODEL 229 TRANSFER CASE

1987 Grand Wagoneer vehicles are equipped with a New Process Gear (N.P.G.) model 229 transfer case.

Refer to Chapter E in the M.R. 253 manual for specifications and service procedures.

	SUSPENSION WHEELS AND TIRES	
-------------------------------------------------------------------------------------	----------------------------------------------	---------------------------------------------------------------------------------------

TIRES

A new self sealing, P235-75R15, white sidewall tire is now offered as standard equipment on all Grand Wagoneers.